





- 05 The first and only ceramic that lays like parquet
- 06 Rapid laying
- 09 Absolute planarity
- 10 Absence of gaps
- 13 A natural surface that furnishes
- 14 Ceramic upper surface features
- 17 Over 25 textures for 1000 applications
- 19 Pastelli
- 21 Brillanti
- 23 Rocce
- 25 Cementi
- 27 Ruvidi
- 29 Rigati
- 31 Vivaci
- 33 Veli
- 34 Skirting board
- 36 Laying instructions
- 38 Technical features



The first
and only ceramic
that lays like parquet

only

Paviker is the new brand that is born from the collaboration between LAMINAM and BRUNO PARQUET to combine the technology of parquet with ceramic.

Paviker is an innovative product in the construction world that has opened the way for a new concept in floor coverings.

It is a pre-finished product composed of a 3 mm thick layer of Laminam ceramic and a multilayer plywood support with tongue and groove on all four sides.

Laminam is known on the market as being the biggest and thinnest slab ever seen with a thickness of just 3 mm.

The combination between wood and ceramic was born from the idea to create a new concept in surfaces that will revolutionize the world of construction, architecture and interior design.

PAVIKER®

rapidity

Paviker can be laid with the same laying technique as parquet with bi-component glue on any foundation (if compact), overlapping any material, without demolishing the existing one and therefore reducing processing times.

It is ideal for renovation projects where rapid laying is sought after and it is suitable to cover all types of existing flooring.

The handling ease, lightness and the processing simplicity allow laying times to be reduced and therefore also the costs.

Rapid laying

PAVIKER®





planarity

Absolute planarity

It is a completely flat material that combines the technology of the pre-finished parquet to the ceramic one. New for contemporary architecture that has changed the manner to decorate spaces and volumes.

PAVIKER®

no gaps

Another noteworthy feature of this innovative material is the absence of gaps between tiles, a prerogative that besides avoiding long laying periods, allows an easy combination with our pre-finished products.

Processing with Paviker tongue and groove allows the combination with all BRUNO PARQUET pre-finished parquet having 11, 14 or 15 mm thickness (Velvet, Teknomaxi, Teknopret collections).

End users can use their own creative ability to combine the Paviker collections with the numerous assortments of pre-finished parquet.

Absence of gaps

PAVIKER®





A natural surface that furnishes

PAVIKER®

natural

An easily maintainable product, perfect to enrich furnishing projects and create new designs.

Paviker allows you to customize internal spaces and furnishing elements thanks to the wide range of colours that are unalterable over time.

Easy to clean and hygienic, as not absorbent, the surface has no toxic substances. It is a completely natural product. It does not release any elements into the environment and can be easily ground and completely recycled for other production processes.

properties

CHEMICAL RESISTANCE

It resists to organic and inorganic solvents, disinfectants and detergents. It can be easily cleaned without affecting its surface characteristics.

WEAR RESISTANCE

It is highly scratchproof and resistant to deep abrasion. The properties of the slabs remain unchanged even after intensive use and frequent cleaning.

HIGH FLEXURAL STRENGTH

It has a high modulus of rupture.

WATER ABSORPTION

Paviker's average water absorption is 0,1% therefore it is suitable for any environmental conditions.

REACTION TO FIRE

It does not contain organic material therefore it is resistant to fire and high temperatures.

Ceramic upper surface features

HYGIENIC SURFACE

It is perfectly suitable for food substances since it does not release elements in solution. It does not allow the formation of mould, bacteria and fungi.

CHROMATIC PROPERTIES

It does not contain organic pigments and is resistant to UV rays. Even if subjected to severe climate changes, the colours remain stable.

ECO-FRIENDLY AND RECYCLABLE

It is a totally natural product. It does not release any elements into the environment and can be easily milled and recycled in other manufacturing processes.

GRAFFITI PROOF

It is the first graffiti proof ceramic surface; it is easy to clean and even the strongest paints can be easily removed.

PAVIKER®





Over 25 textures
for 1000 applications

PAVIKER®

variety

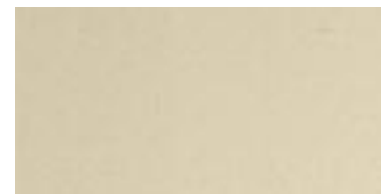
- Pastelli
- Brillanti
- Rocce
- Cementi
- Ruvidi
- Rigati
- Vivaci
- Veli



Photos: Paviker Pastelli Perla. Strip: pre-finished wooden floor Velvet Oak Honey

Pastelli

DIMENSIONS 200x1000 mm
THICKNESS 11 - 14 - 15 mm



Avorio



Nero



Fumo



Perla

PAVIKER®



Photos: Paviker Brillanti Moro

Brillanti

DIMENSIONS 200x1000 mm
THICKNESS 11 - 14 - 15 mm



Avorio



Grigio

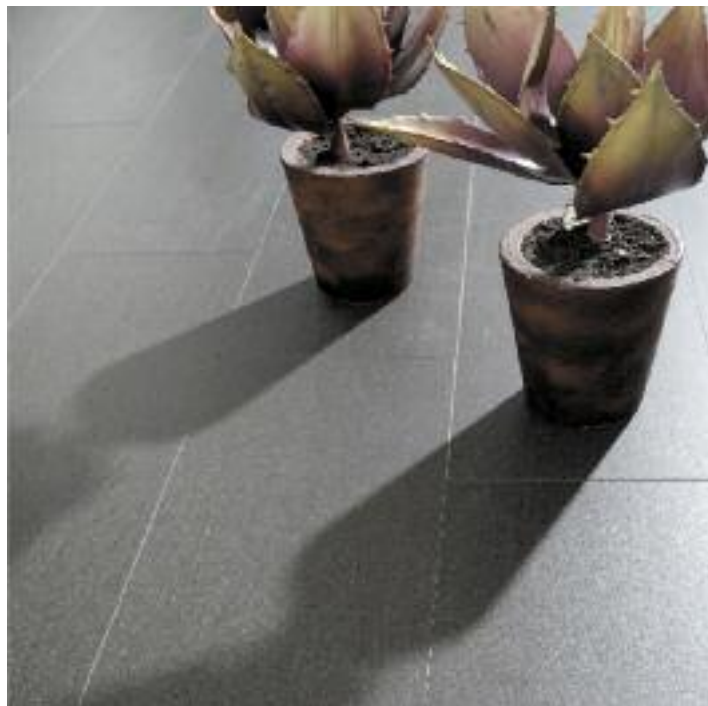


Moro



Nero

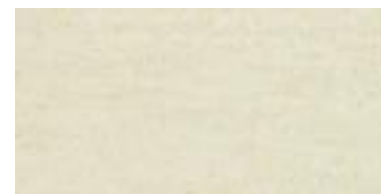
PAVIKER®



Photos: Paviker Rocce Basalto Vena scura

Rocce

DIMENSIONS 200x1000 mm
THICKNESS 11 - 14 - 15 mm



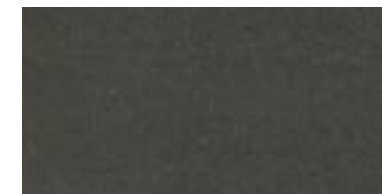
Travertino
Avorio



Crema Marfil



Basalto
Vena chiara



Basalto
Vena scura



Ossidiana
Vena scura

PAVIKER®



Photos: Paviker Cementi Grigio. Strip: pre-finished wooden floor Velvet Oak Bleached



Cementi

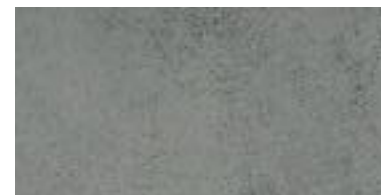
DIMENSIONS 200x1000 mm
THICKNESS 11 - 14 - 15 mm



Avorio



Nero



Grigio

PAVIKER®



Ruvidi

DIMENSIONS 200x1000 mm
THICKNESS 11 - 14 - 15 mm



Zinco



Basalto



Photos: Paviker Ruvidi Zinco

PAVIKER®



Photos: Paviker Rigati Avorio. Strip: pre-finished wooden floor Velvet Oak Slate

Rigati

DIMENSIONS 200x1000 mm

THICKNESS 11 - 14 - 15 mm



Avorio



Moro

PAVIKER®



Photos: Paviker Vivaci Neve

Vivaci

DIMENSIONS 200x1000 mm

THICKNESS 11 - 14 - 15 mm



Neve



Nero



Moro

PAVIKER®



Photos: Paviker Veli Cielo

Veli

DIMENSIONS 200x1000 mm

THICKNESS 11 - 14 - 15 mm



Avorio



Cielo

PAVIKER®

Skirting board



DIMENSIONS

3,5 x 80 x 1000 mm

- Pastelli
- Brillanti
- Rocce
- Cementi
- Ruvidi
- Rigati
- Vivaci
- Veli



DIMENSIONS

14 x 80 x 1000 mm

- Pastelli
- Brillanti
- Rocce
- Cementi
- Ruvidi
- Rigati
- Vivaci
- Veli



Laying instructions

BEFORE LAYING

Check that the screed and floor to be coated is:

- completely clean with no grease, oil or dust (clean if necessary);
- dry, with no cement, resin or paint residue and loose or not totally anchored pieces (eliminate if necessary);
- perfectly resistant and compact;
- flat: checking the flatness must be carried out with a 2 metre long straightedge; on laying the straightedge on the screed in all directions, the allowed tolerance is 3 mm. Different heights to the tolerance must be filled with suitable self-levelling products;
- stable, without cracks and having normal shrinkage (any cracks from shrinkage must be cleared of dust and sealed with suitable materials);
- tough and resistant to mechanical stress determined by the intended use;
- suitable thickness;
- made by using perimeter strips and expansion joints.

Open packaging just before laying.

If the material has been stored at a temperature and humidity percentage different to where it must be laid, it is recommended to place the PAVIKER slabs at least 24 hours before, in a horizontal position and distributed on the area where they must be laid so they can “acclimatize” to the heat and climatic conditions of the place.

During laying the ambient humidity must be between 45 and 65% and the temperature must not be below 10°C, otherwise deformations may occur.

The humidity of the foundations must not exceed 2% in weight in the case of normal or fast - drying concrete foundation sections, 1,7% for heating foundation sections and 0,5% for anhydride foundation sections.

In the presence of rising damp in the screeds or existing floors, it is important to treat the surface to stop it before laying.

FLOOR LAYING

Laying is similar to that of parquet. **Pay attention so that the edges of the ceramic do not knock each other and to not dirty the ceramic surface of the PAVIKER slabs with glue.**

DRILLING

PAVIKER can be drilled with the aid of continuous rim diamond tools used in the glass and ceramic sector. Drilling must be done from front to back of the slab (fig. 1-2).

CUTTING

A machinist square, a yardstick, a glasscutter, permanent marker and circular saw are needed for cutting (fig. 3-4). Take measurements and mark the position on the back of the slab (fig. 5). Cut the support with the circular saw paying attention to not touch the ceramic, leaving about a 0.5 mm support (fig. 6). Place the machinist square on the ceramic where the cut from the circular saw was made and cut by pushing hard on the glasscutter (fig. 7). Put the embossed slab on a table or any surface, holding the longest part of the slab firmly (fig. 8). Push the shortest part downwards until the ceramic and the support break (fig. 9).

Technical features

LAMINAM®

PHYSICAL AND CHEMICAL PROPERTIES	NORM / TEST METHOD	LAMINAM® 3
Surface quality	ISO 10545-2	> 95%
Water absorption	ISO 10545-3	Average value 0,1% (<0,3%)
	ASTM C373	Average value 0,1% (<0,3%)
Mohs scale hardness	UNI EN 101	> 6
Resistance to deep abrasion	ISO 10545-6	≤ 175 mm³
Coefficient of linear thermal expansion (10 ⁻⁶ /°C)	ISO 10545-8	6,6
Stain resistance	ISO 10545-14	Class 5
Shock resistance	ISO 10545-5	Average value 0,6
Coefficient of friction	ASTM C-1028	μ > 0,6
Fire reaction	EN 13501 (rev. 2005)	A1 (Decision 96/603/CE as amended)