

ELEMENTS@WORK

ege[®]

THE URGE TO EXPLORE SPACE

Elements@work

The collection in brief

Today's office environment is not only a place of work, it is also a place in which many of us spend most of our waking hours. In some aspects, the office has become our second home. The challenge is to create working environments in which employees enjoy what they do and feel motivated. The office should promote creative thinking while allowing for full concentration and focus. In the past years, new trends have gained ground within the office interior design industry. Today's office design implements cool areas of concentration and cosy islands of creative inspiration.

With Elements@work, ege provides a multitude of trendy design options for the modern office environment which complements the need for style, atmosphere and comfort.

All this with:

- No minimum order requirements
- 8 standard qualities to match any project
- Recolour options
- Undisputed performance standard - EN 1307
- Use classification to fit any need
- 24 hours sample service
- Ready for dispatch within 2 weeks from receipt of order



Contents

Elements	7
Inspirational	11
Design overview	31
Recolour	44
Technical specifications	47



Elements





Inspirational

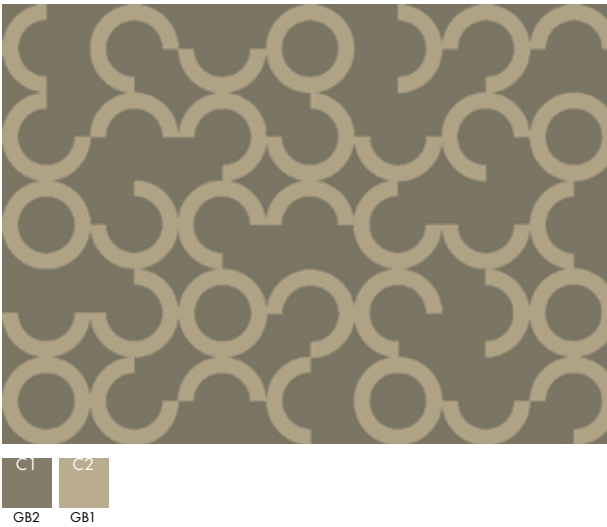




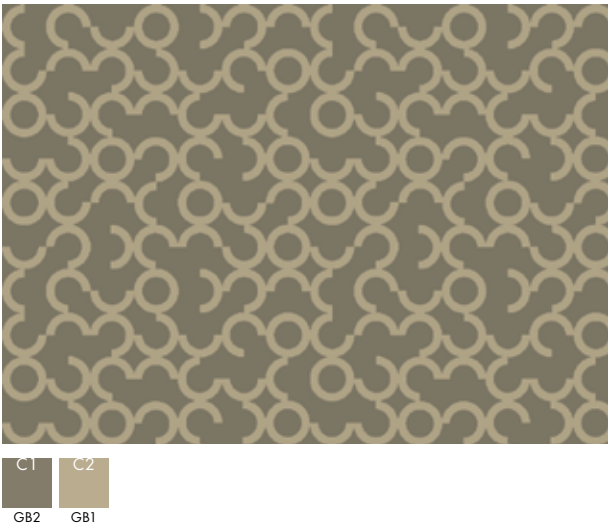


Design overview

RF52951403 Carbon large K5295
w: 130.1 cm x l: 111.5 cm



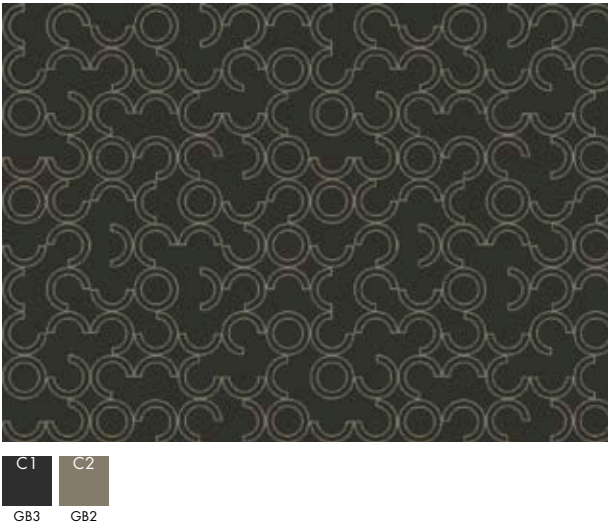
RF52951404 Carbon small K5295
w: 65.0 cm x l: 55.8 cm



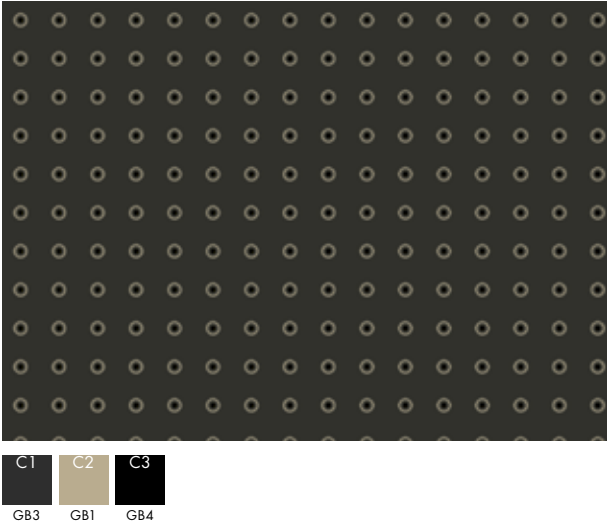
RF52951405 Carbon large K5295
w: 130.1 cm x l: 111.5 cm



RF52951406 Carbon small K5295
w: 65.0 cm x l: 55.8 cm



RF52951407 Electron K5295
w: 8.1 cm x l: 8.1 cm



RF52951408 Proton small

w: 48.8 cm x l: 48.8 cm

K5295



RF52951409 Proton large

w: 195.6 cm x l: 195.6 cm

K5295



RF52951401 Energy formation

w: 391.2 cm x l: 391.2 cm

K5295



For HL Loop, HL Loop E16 or HL 1100 80/20, add a mélange from Forces@Work as background. Millitron trial run necessary.

RF52951402 Oxygen bubble

w: 195.6 cm x l: 182.6 cm

K5295



RF52951402 Oxygen bubble

KALIBRERES



Ca 1.2
bar



Ca 2.5
bar



den stilles
TRYK

SKAL IKKE
KALIBRERES



Ca 2.2 bar



RF52951410 Neutron small

w: 97.8 cm x l: 90.2 cm

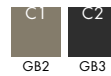
K5295



RF52951411 Neutron large

w: 195.6 cm x l: 180.2 cm

K5295



RF52951412 Xenon

w: 55.9 cm x l: 55.9 cm

K5295

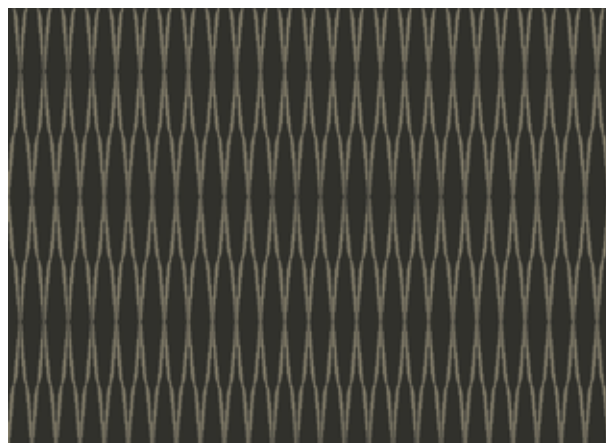


RF52951413 Orbit
w: 195.6 cm x l: 165.0 cm



K5295

RF52951414 Silver line
w: 5.1 cm x l: 52.8 cm



K5295



RF52951415 Fusion square small

K5295

w: 39.1 cm x l: 45.9 cm



RF52951416 Fusion square large

K5295

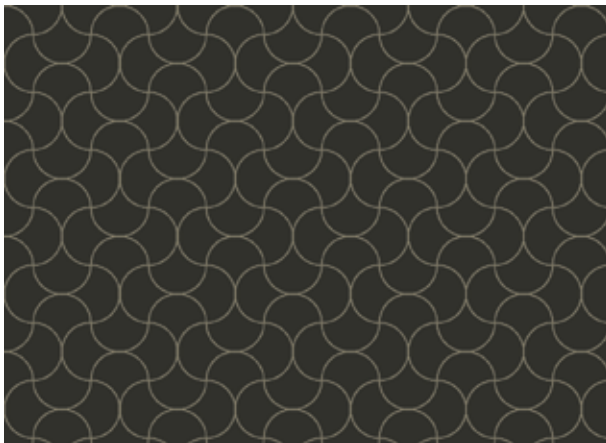
w: 78.2 cm x l: 91.7 cm



RF52951417 Hydrogen small

K5295

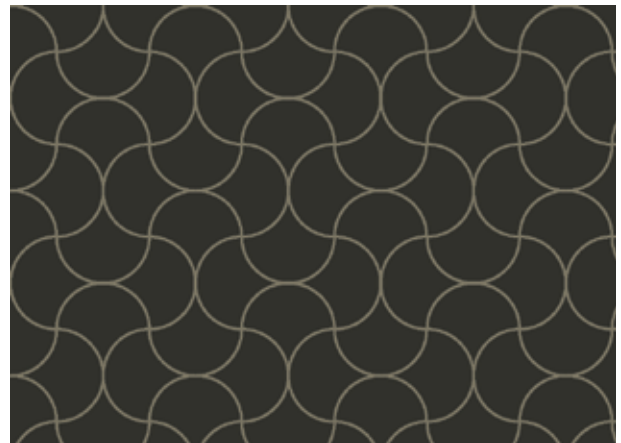
w: 24.4 cm x l: 24.4 cm



RF52951418 Hydrogen large

K5295

w: 39.1 cm x l: 39.1 cm



RF52951419 Magnetic grid small

K5295

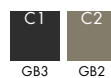
w: 12.2 cm x l: 12.2 cm



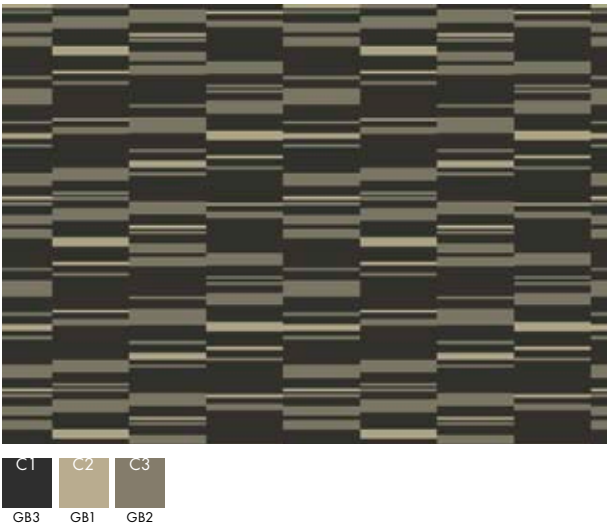
RF52951420 Magnetic grid large

K5295

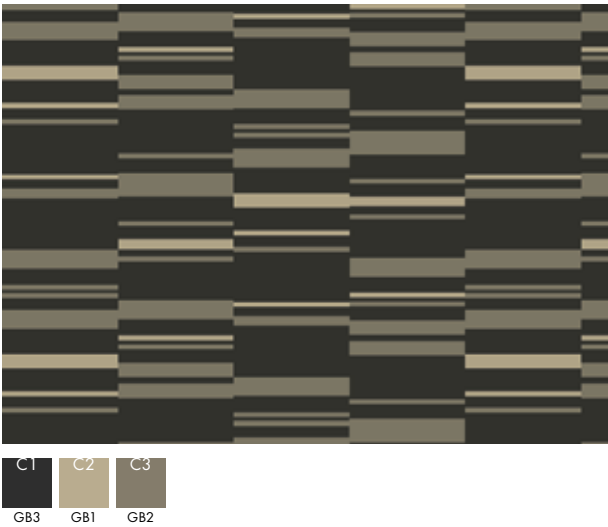
w: 24.4 cm x l: 24.4 cm



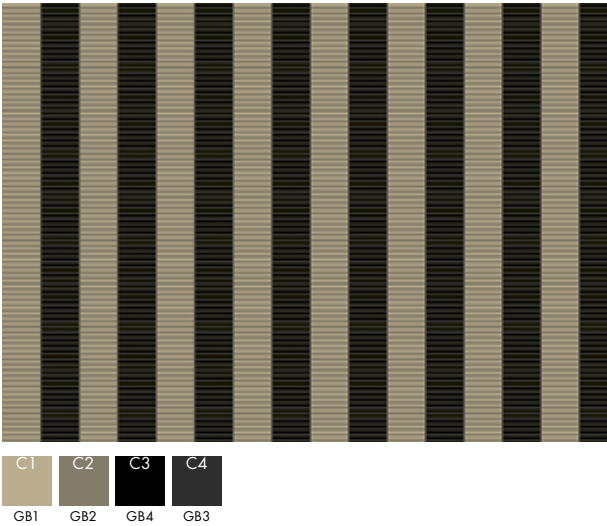
RF52951421 Titanium small K5295
w: 65.0 cm x l: 80.9 cm



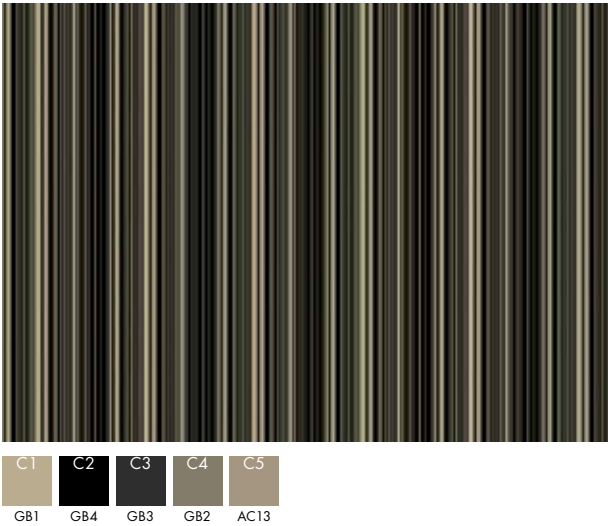
RF52951422 Titanium large K5295
w: 97.8 cm x l: 121.7 cm



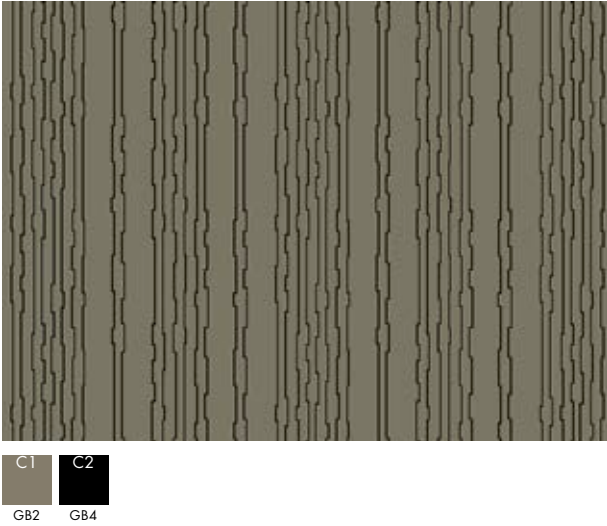
RF52951423 Helium stripe K5295
w: 16.3 cm x l: 1.1 cm



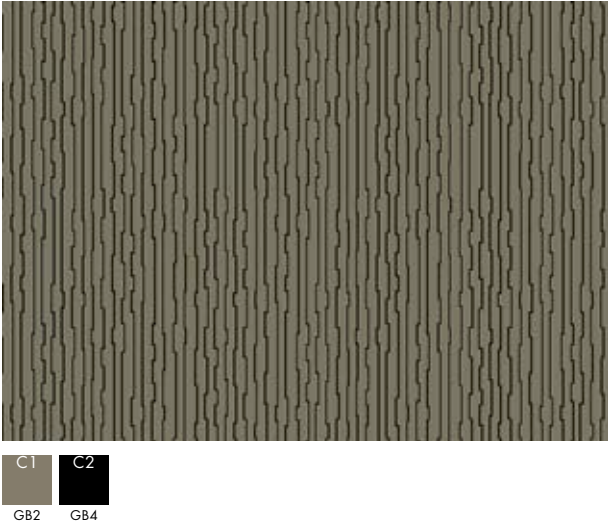
RF52951427 Chromium stripe K5295
w: 22.9 cm x l: 1.0 cm



RF52951425 Bended metal K5295
w: 55.9 cm x l: 68.0 cm



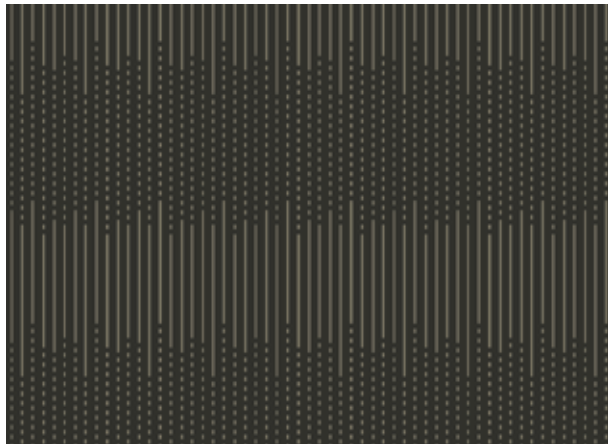
RF52951426 Bended metal K5295
w: 55.9 cm x l: 68.0 cm



RF52951424 Alkaline morse

w: 13.5 cm x l: 59.6 cm

K5295



RF52201601 Ionic bonding

w: 391.2 cm x l: 391.2 cm

K5220

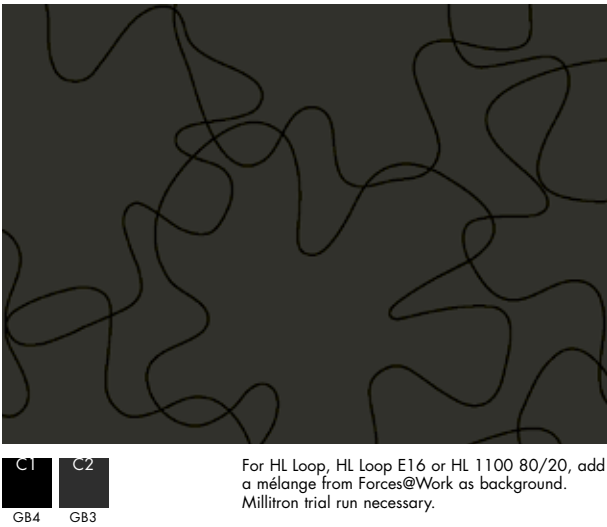


RF52201601 Ionic bonding

RF52951428 Krypton flourish

K5295

w: 195.1 cm x l: 195.1 cm



RF52951429 Krypton flourish

K5295

w: 195.1 cm x l: 195.1 cm

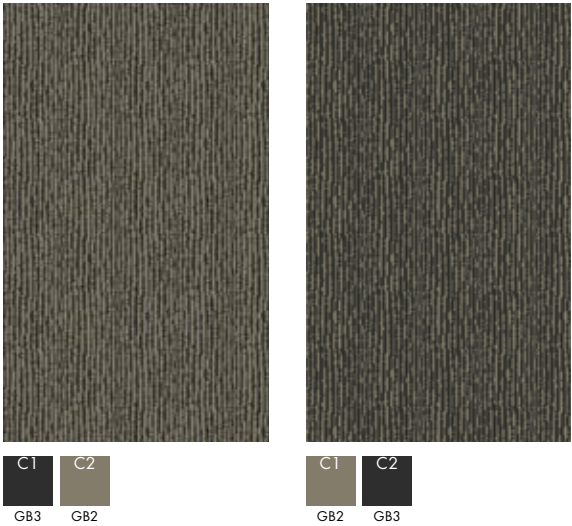


RF52951430 Iron stripe

RF52951431 Iron stripe

w: 24.4 cm x l: 24.4 cm

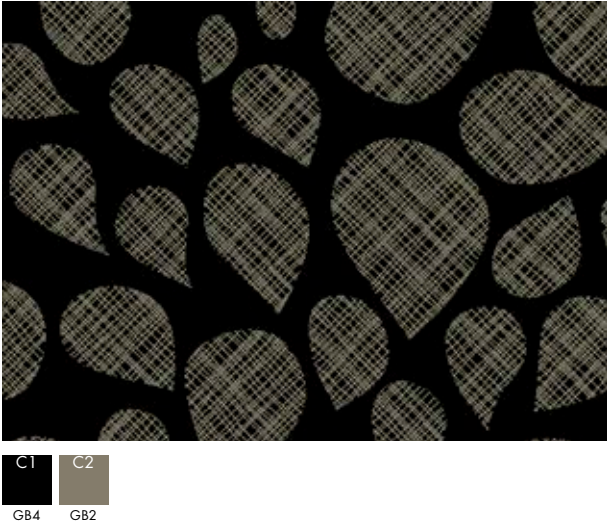
w: 24.4 cm x l: 24.4 cm



RF52951432 Manganese drop

K5295

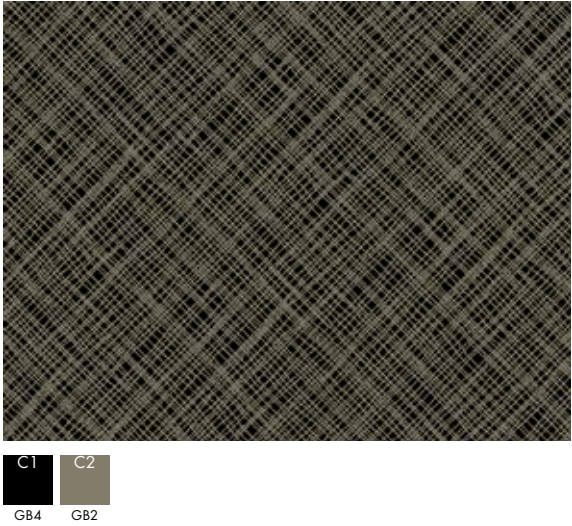
w: 195.6 cm x l: 195.6 cm



RF52951433 Manganese hatch

K5295

w: 130.1 cm x l: 130.1 cm



Corresponding
infill

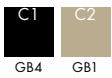
Corresponding
infill





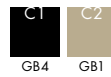
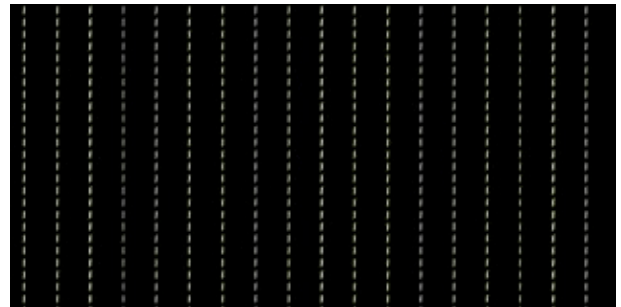
RF52951434 Floral
w: 391.2 cm x l: 398.5 cm

K5295



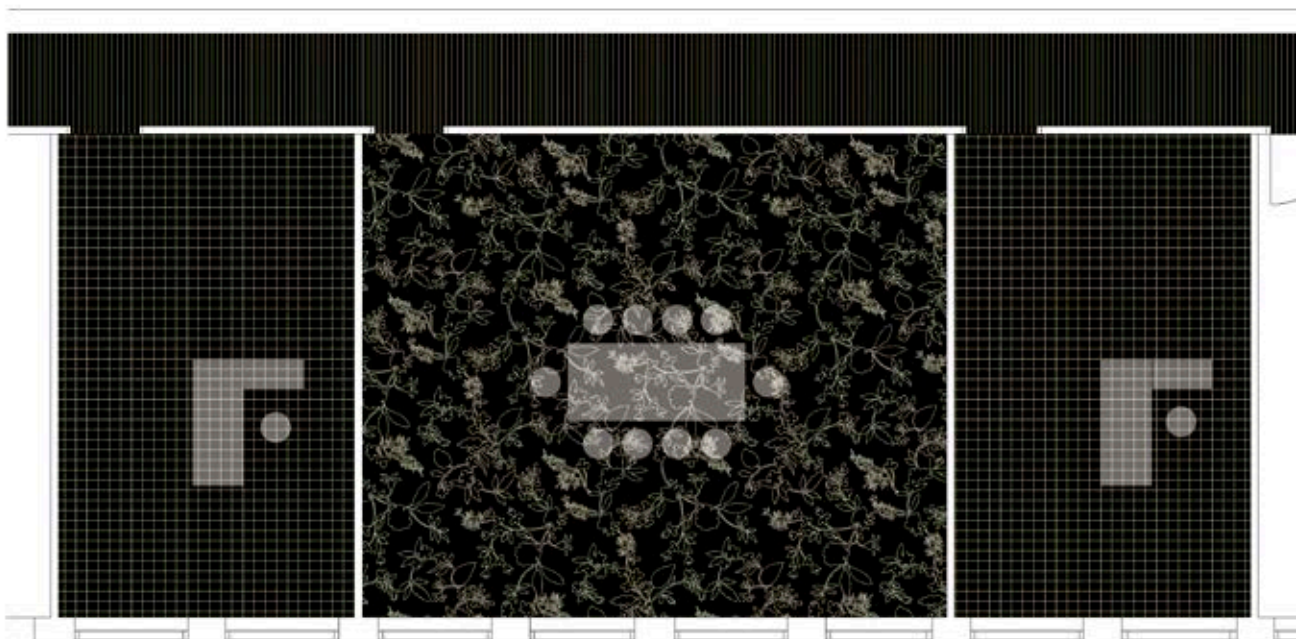
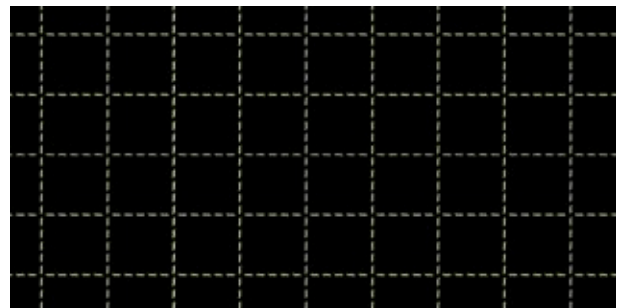
RF52951435 Metallic line
w: 14.0 cm x l: 2.5 cm

K5295



RF52951436 Metallic check
w: 14.0 cm x l: 12.7 cm

K5295



RF52951434 Large room
RF52951435 Corridor
RF52951436 Small rooms

Recolour options

Select design



Change colour of background



Change pattern colour





Colour palettes

Colour palette 5220

GB1	A20041	GB2	A20042	GB3	A20043	GB4	A20044	GB5	A20045	GB6	A20046
GB7	A20047	GB8	A20048	GB9	A20049	GB10	A20050	GB11	A20051	GB12	K20012

Accent Colours – for use in areas of max 10 x 10 cm

AC43	AC44	AC45	AC46	AC47	AC48	AC49	AC50	AC51	AC52	AC53	AC54	AC55	AC56	AC57	AC58	AC59	AC60
AC61	AC62	AC63	AC64	AC65	AC66	AC67	AC68	AC69	AC70	AC71	AC72	AC73	AC74	AC75	AC76	AC77	

Colour palette 5275

GB1	K28328	GB2	K28329	GB3	K28378	GB4	K28374	GB5	K28366	GB6	K28364
GB7	K28380	GB8	K28379	GB9	K27886	GB10	K28360	GB11	K28367	GB12	K28368

Accent Colours – for use in areas of max 10 x 10 cm

AC13	AC14	AC15	AC16	AC17	AC18	AC19	AC20	AC21	AC22	AC23	AC24	AC25	AC26	AC27	AC28	AC29	AC30
AC31	AC32	AC33	AC34	AC35	AC36	AC37	AC38	AC39	AC40	AC41	AC42	AC43	AC44	AC45	AC46	AC47	

Colour palette 5285

GB1	K28521	GB2	K28522	GB3	K28523	GB4	K28524	GB5	K28525	GB6	K28526
GB7	K28527	GB8	K28528	GB9	K28529	GB10	K28530	GB11	K28531	GB12	K20012

Accent Colours – for use in areas of max 10 x 10 cm

AC13	AC14	AC15	AC16	AC17	AC18	AC19	AC20	AC21	AC22	AC23	AC24	AC25	AC26	AC27	AC28	AC29	AC30
AC31	AC32	AC33	AC34	AC35	AC36	AC37	AC38	AC39	AC40	AC41	AC42	AC43	AC44	AC45	AC46	AC47	

Colour palette 5295

GB1	K28601	GB2	K28602	GB3	K28603	GB4	K20012	GB5	K28605	GB6	K28606
GB7	K28607	GB8	K28608	GB9	K28609	GB10	K28610	GB11	K28611	GB12	K28632

Accent Colours – for use in areas of max 10 x 10 cm

AC13	AC14	AC15	AC16	AC17	AC18	AC19	AC20	AC21	AC22	AC23	AC24	AC25	AC26	AC27	AC28	AC29	AC30
AC31	AC32	AC33	AC34	AC35	AC36	AC37	AC38	AC39	AC40	AC41	AC42	AC43	AC44	AC45	AC46	AC47	

Colour palette 5289

Only available with designs RF52951401 and RF52951428 on HL Loop, HL Loop E16 or HL 1100 80/20 – Millitron trial run necessary.

GB1	K34302	GB2	K34303	GB3	K34304	GB4	K34309	GB5	K34312	GB6	K34314
GB7	K34317	GB8	K34318	GB9	K34354	GB10	K34355	GB11	K34356	GB12	Z0850

Identification characteristics	Standard	Highline 80/20 1900 WT	Highline 80/20 1400 WT	Highline 80/20 1100 WT	Highline 910 WT	Highline 750 WT	Highline 630 WT	Highline Loop WT
Construction	ISO 2424	Tufted cut pile	Tufted cut pile	Tufted cut pile	Tufted cut pile	Tufted cut pile	Tufted cut pile	Tufted loop pile
Pile material	DIR 96/73, 96/74	80% wool, 20% polyamide	80% wool, 20% polyamide	80% wool, 20% polyamide	100% recycled polyamide	100% polyamide	100% polyamide	100% polyamide
Colouration	-	Millitron	Millitron	Millitron	Millitron	Millitron	Millitron	Millitron
Backing	eTL	WT – Woven textile	WT – Woven textile	WT – Woven textile	WT – Woven textile	WT – Woven textile	WT – Woven textile	WT – Woven textile
Dimensions	ISO 3018	Approx. 400 cm	Approx. 400 cm	Approx. 400 cm	Approx. 400 cm	Approx. 400 cm	Approx. 400 cm	Approx. 400 cm
Gauge	ISO 2424	1/8	1/8	1/8	1/10	1/8	1/10	1/10
Total thickness	ISO 1765	Approx. 10.0 mm	Approx. 8.5 mm	Approx. 8.0 mm	Approx. 7.5 mm	Approx. 7.0 mm	Approx. 6.0 mm	Approx. 6.5 mm
Surface pile thickness	ISO 1766	Approx. 7.5 mm	Approx. 6.0 mm	Approx. 5.0 mm	Approx. 5.5 mm	Approx. 4.5 mm	Approx. 4.0 mm	Approx. 4.0 mm
Tuft	ISO 1763	Approx. 167,000 per m ²	Approx. 137,000 per m ²	Approx. 120,000 per m ²	Approx. 236,000 per m ²	Approx. 127,000 per m ²	Approx. 242,000 per m ²	Approx. 164,000 per m ²
Total carpet weight	ISO 8543	Approx. 3,350 g/m ²	Approx. 2,900 g/m ²	Approx. 2,600 g/m ²	Approx. 2,350 g/m ²	Approx. 2,250 g/m ²	Approx. 2,050 g/m ²	Approx. 2,200 g/m ²
Pile yarn weight	eTL	1,900 g/m ²	1,400 g/m ²	1,100 g/m ²	910 g/m ²	760 g/m ²	630 g/m ²	680 g/m ²
Surface pile density	ISO 8543	Approx. 0.200 g/cm ³	Approx. 0.170 g/cm ³	Approx. 0.150 g/cm ³	Approx. 0.145 g/cm ³	Approx. 0.130 g/cm ³	Approx. 0.120 g/cm ³	Approx. 0.115 g/cm ³
edge soil protection	eTL	Yes	Yes	Yes	Yes	Yes	Yes	Yes
Moth-proofed	eTL	Yes	Yes	Yes	-	-	-	-

Performance characteristics

Performance areas	EN 1307	Class 33 – Commercial – Heavy	Class 33 – Commercial – Heavy	Class 33 – Commercial – Heavy	Class 32 – Commercial – General	Class 33 – Commercial – Heavy	Class 32 – Commercial – General	Class 33 – Commercial – Heavy	Class 33 – Commercial – Heavy
Castor chair suitability	EN 985	-	-	-	-	Continuous use	-	Continuous use	Continuous use
Suitability for use on stairs	EN 1943	-	Yes	Yes	Yes	Yes	-	Yes	Yes
Static control	eTL	Permanently antistatic	Permanently antistatic	Permanently antistatic	Permanently antistatic	Permanently antistatic	Permanently antistatic	Permanently antistatic	Permanently antistatic
Suitability for under floor heating	ISO 8302	-	Yes	Yes	Yes	Yes	Yes	Yes	Yes
Acou. insu. from impact noise	EN ISO 717-2/eTL	29 dB	31 dB	27 dB	27 dB	28 dB	26 dB	25 dB	24 dB
Acoustical absorption	ISO 354/eTL	0.30 aW	0.25 aW	0.25 aW	0.20 aW	0.20 aW	0.20 aW	0.20 aW	0.20 aW

Safety and environmental characteristics

Fire classifications	IMO DK, MK D, DIBt ASZ, no CH, VKE/AEAL EN 13501-1 Euroclass	Approved Z-156.601-479 C ₀ -s1 C ₀ -s1	Certified Approved Z-156.601-479 C ₀ -s1 C ₀ -s1	Certified Approved Z-156.601-479 B ₀ -s1 B ₀ -s1	Approved Z-156.601-441 C ₀ -s1 C ₀ -s1	Approved Z-156.601-441 C ₀ -s1 C ₀ -s1	Approved Z-156.601-441 C ₀ -s1 C ₀ -s1	Approved Z-156.601-440 B ₀ -s1 B ₀ -s1
Indoor air	Green Label Plus DIM Certificate BASIA Emissions dans l'air intérieur GECA	Approved No. 006 Registered A+/A+	Approved No. 006 Registered A+/A+	Approved No. 006 Registered A+/A+	Approved No. 006 Registered A+/A+	Approved No. 006 Registered A+/A+	Approved No. 006 Registered A+/A+	Approved No. 006 Registered A+/A+
Environmental profile	Bre Byggsvarudeklaration Environmental Product Declaration BREEAM-NOR LEED	- - - Qualified	BVD 3 - - Qualified	BVD 3 - - Qualified	BVD 3 EPD-egs-2013103-CBC1-EN Approved with WTA backing Qualified	BVD 3 Approved with WTA backing Qualified	ENP434 BVD 3 Approved with WTA backing Qualified	BVD 3 - - Qualified
CE labeling	EN 14041 Declaration of Performance	Certified DOP-9711-8C	Certified DOP-9711-8C	Certified DOP-9711-8B	Certified DOP-9711-4C	Certified DOP-9711-4C	Certified DOP-9711-3C	Certified DOP-9711-1-4B

Manufacturer characteristics

Quality management	ISO 9001	Audited and verified by Bureau Veritas Certification
Environmental management	ISO 14001	Audited and verified by Bureau Veritas Certification
Eco management	EMAS	Audited and verified by Bureau Veritas Certification
Occupational Health & Safety	DS/OHSAS 18001	Audited and verified by Bureau Veritas Certification
Corporate Social Responsibility	DS 49001	Audited and verified by Bureau Veritas Certification
Carpet Recycling UK	Member	www.carpetrecyclinguk.com

For full technical specs and installation and maintenance guides see www.eggecarpets.com



THE URGE TO EXPLORE SPACE

www.egecarpets.com