

YOUR STYLE. YOUR FLOOR.



AS INDIVIDUAL AS YOU

Chalet and Chaletino oak planks

CHALET

*Design is not just
the appearance,
but also functionality.*

Chalet is an exclusive oak plank of different widths and lengths of up to 4 metres. The planks are delivered in a rustic grade permitting knots and lively colour variations. The oak wear layer is approx. 4.5 mm thick and the centre and bottom layers are of high-quality spruce. Every floor is planned by BOEN's floor designer and specially adapted to the individual room. This makes each floor completely unique.

Bevelled on all four edges

All planks have a micro bevel of 1 mm at 45 degrees along all four edges. The bevel highlights the long length and breadth of these large planks. All boards are tongue & grooved on the long edge with loose tongue on the short end.

Technical details

→ Width: 200 mm

→ Length: 2000 – 4000 mm

→ Width: 250 mm

→ Width: 300 mm

→ Width: 350 mm

→ Width: 395 mm

→ Thickness:
20 mm



→ Hardwood wear layer:
approx. 4.5 mm



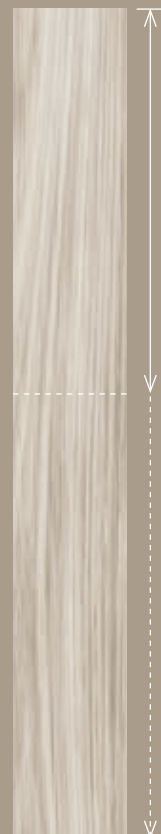
→ Centre layer:
10.5 mm



→ Bottom layer:
5 mm



→ Micro bevel:
All 4 edges



CHALETINO

*Different dimensions
create extraordinary
rooms.*

Large rooms often tempt people into choosing particularly wide planks. Our Chaletino planks create a lovely and elegant atmosphere with a width of 30 cm and length of 2.75 m. The oak surfaces of the Chaletino and Chalet planks are available in a range of finishes to suit the most varied of furnishing styles.

Thoroughly engineered design

The hardwood wear layer has a thickness of approx. 4.5 mm and the solid 3-layer design has been engineered for a long service life.

Bevelled on all four edges

All planks have a micro bevel of 1 mm at 45 degrees along all four edges. The bevel highlights the long length and breadth of these large boards. All boards are tongue & grooved on the long edge with loose tongue on the short end.

Technical details

→ Width: 300 mm

→ Thickness:
20 mm

→ Length: 2750 mm

→ Hardwood wear layer:
approx. 4.5 mm

→ Centre layer:
10.5 mm

→ Bottom layer:
5 mm

→ Micro bevel:
All 4 edges



SOURCED FROM THE FINEST TIMBER

At BOEN we are proud of Chalet! A Chalet floor combines BOEN's substantial experience in the design of quality structurally stable floors with the latest in surface treatment technology. Our natural oil is of the highest quality and based upon a combination of carnauba wax, candelilla wax, sunflower seed oil, soya bean oil and thistle oil.

In either a private home or a public environment, a Chalet oak floor will always impress and inspire.

Raw materials used in the production of Chalet plank come from timber that is between 150 and 200 years old. BOEN has its own timber specialists who select the correct qualities from the Baltic forests.

Each room – planned individually

Once BOEN have created your floor plan, simply follow the installation step by step. Each plank is labelled with its position in the floor and this makes laying the floor easy even if there are many different widths of planks. BOEN calculates precisely where each plank should be placed so that nothing is wasted.

Four steps to installing a unique floor:

- 1.** Select the colour of the surface.
- 2.** Make a precise sketch of the room, including where the doors and windows are and send it to BOEN. For any possible query, please also include your contact address and telephone number.
- 3.** You will receive a proposal for what the floor could look like.
- 4.** If you wish to approve the proposal, then you just confirm as an order.

Under floor heating systems

Chalet and Chaletino is suitable to be installed over under floor heating. Care should be taken as excessive subfloor heat may cause cracks between boards.



CHALET

SURFACES

With twelve different colours and characters, there are many possibilities to choose between. BOEN Chalet and Chaletino planks are finished with "Live Natural" and dried in the air. This way, they are perfectly protected and the natural character of the wood is maintained. For questions regarding the care please ask for our cleaning and maintenance instructions.



Oak Traditional white, Chaletino



Oak Coral, Chalet



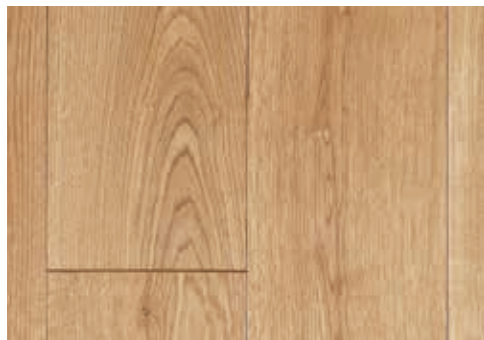
Oak Traditional, Chaletino



Oak Antique, Chalet

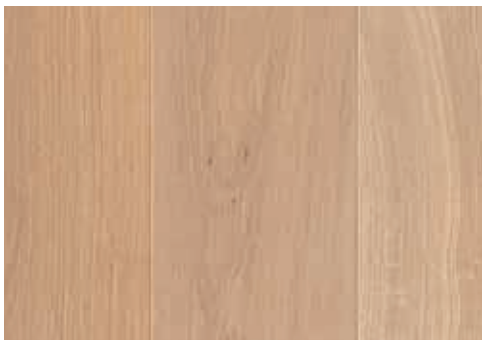


Oak Old Grey, Chalet

**Oak Nature Chaletino**

An elegant and smooth appearance. Treated with natural oil and with brushed or unbrushed surface.

- › Pure Nordic
- › Classic Elegance

**Oak Nature white Chaletino**

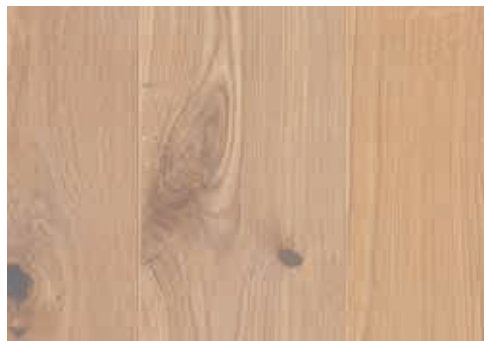
An elegant and very light floor with white pigmented surface.

- › Pure Nordic
- › Classic Elegance

**Oak Traditional Chalet/Chaletino**

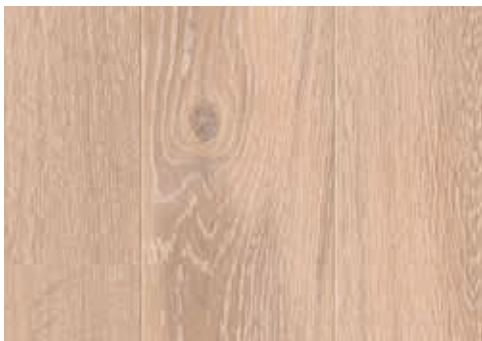
A classic that looks lovely and vibrant thanks to the knots on the surface. Treated with natural oil, brushed or unbrushed.

- › Modern Rustic
- › Urban Contrast

**Oak Traditional white Chalet/Chaletino**

This floor is light and vibrant with white pigmentation. Treated with natural oil.

- › Pure Nordic
- › Modern Rustic

**Oak Coral Chalet/Chaletino**

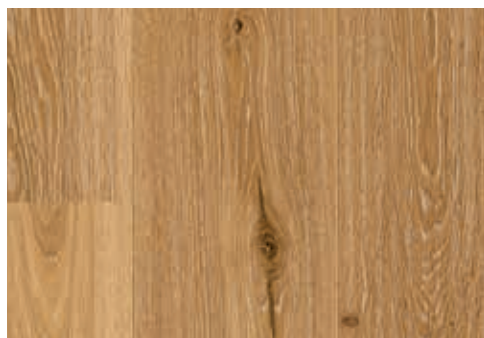
Gleaming white pigmentation, brushed. Treated with natural oil.

- › Pure Nordic
- › Modern Rustic

**Oak Pearl Chalet/Chaletino**

Pearl grey pigmentation. Treated with natural oil.

- › Pure Nordic
- › Modern Rustic

**Oak Old Grey Chalet/Chaletino**

Whitewashed appearance, stained and brushed. Treated with natural oil.

- › Pure Nordic
- › Modern Rustic

**Oak Sand Chalet/Chaletino**

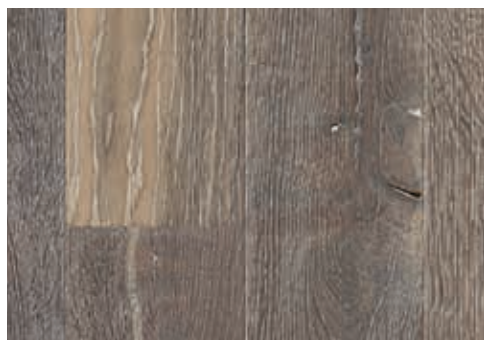
Sand colour pigmentation, brushed. Treated with natural oil.

- › Urban Contrast
- › Classic Elegance

**Oak Antique Chalet/Chaletino**

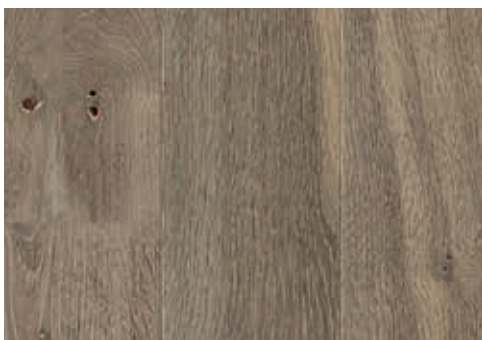
Antique stain. Treated with natural oil.

- › Modern Rustic
- › Urban Contrast

**Oak Highland Chalet/Chaletino**

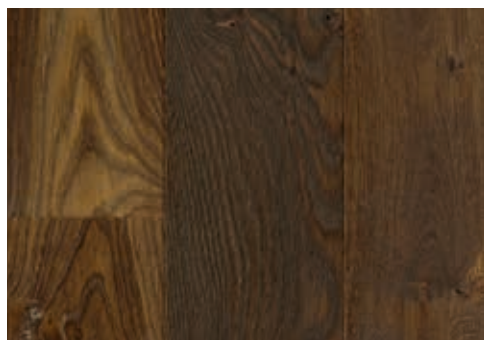
Brushed, dark stained, coloured oiled.

- › Modern Rustic
- › Urban Contrast

**Oak Yellowstone Chalet/Chaletino**

Brushed, dark stained, coloured oiled.

- › Modern Rustic
- › Urban Contrast

**Oak Tobacco Chalet/Chaletino**

Brushed, dark stained, coloured oiled.

- › Urban Contrast



CHALETINO

CRAFTSMANSHIP AND INNOVATION – HAND-IN-HAND

Interiors with wide planks provide an extra good feeling of timelessness. Chaletino inspires us all to create unique rooms. Production of Chaletino requires experienced craftsmen who are able to preserve the wood and protect its beauty. Precision in production and technology in surface treatments are necessary to achieve the required BOEN quality. With our roots firmly fixed to BOEN's sawmill at Kristiansand from the 1600's, BOEN is an active participant in keeping traditions of outstanding craftsmanship alive.

With ten different surface treatments, there are many possibilities to choose between to create a room with a good feeling.

BOEN wishes you years of satisfaction with your selections!



4
STYLES

BE INSPIRED

We make it easy for you to find your own personal interior design style. You can find inspiration, information and design tips for our style worlds Pure Nordic, Modern Rustic, Classic Elegance and Urban Contrast in our main catalogue or on www.boen.com



Region: Scandinavia

BOEN Bruk AS
4658 Tveit, Norway
Phone: +47 38 06 66 00
boen.no

Regions: Western Europe and Asia

BOEN Parkett Deutschland GmbH & Co. KG
Industriestraße 41, 23879 Mölln, Germany
Phone: +49 4542 8003 0
boen.de

Regions: Central and Eastern Europe

BOEN Lietuva, UAB
Ilgio Street 5, 21412 Kietaviskės, Elektrėnu sav.
Lithuania, Phone: +370 686 551 55
boen.lt

Regions: UK, Republic of Ireland

BOEN UK LTD
320-322 Beech Drive, Hartlebury Trading Estate,
Hartlebury, Worcestershire, DY10 4JB
Phone: +44 (0) 800 652 5280
boen.co.uk

Regions: USA and Canada

BOEN Hardwood Flooring Inc.
3408-2 Virginia Avenue, Collinsville,
VA. 24078, USA
Phone: +1 276 647 1802
boen.com

boen.com

