

# ClickBoard and panels



**PARADOR**

living performance

# Art of living meets perfor- mance demand

For us, the art of living is an appreciation of beauty and to create inspiration out of it at any moment in time.

Performance is a permanent feature of our life. Day after day, we demand performance. Delivering daily performance requires solid ground beneath our feet.

Parador – living performance.



**PARADOR**

# Every day quality

Living spaces are an expression of our individual attitude to life and of our own demands. For us, making high demands means having a special awareness for quality.

Parador offers premium products for quality living. The quality of Parador can be seen in the use of exclusively high value materials that are healthy for the home, perfect finishing and the critical flair for natural impression and good design.

# Performance

## Strong with a system

Parador continually tailors the design and functionality of its' wall and ceiling panels to the demands of its' customers.

Whether for an extension, conversion or new build: Parador ClickBoard and Parador panels offer the right product for every space and every requirement. Trouble-free handling, sophisticated technology and contemporary style.

### Healthy living

Parador products for walls and ceilings are made almost 100% out of wood, are low on emissions and allergens and ensure a pleasant indoor surroundings. Quality controls along the entire value creation chain guarantee that products are harmless for people and the environment.

### Home comfort

The wood support material offers additional insulation, is a good heat reservoir and thus ensures an indoor atmosphere with a feel-good factor. Parador ClickBoard and Parador panels are very durable and easy to clean, meaning that they are perfectly suited for households with children, allergy sufferers or pets.

### Intelligent

Patented click system or tongue and groove push-in profiles enable quick and easy assembly.

### Versatile

Ideal for new builds and renovation: Parador wall and ceiling elements are well-suited for loft extensions, as partition walls or facing formwork. They can also be used to subsequently equip rooms with lighting and acoustic systems neatly and elegantly. A consistent product quality enables a batch-neutral installation.

### Made in Germany

Our products are produced in our own factory in Germany as we place the utmost importance to ensuring the highest quality standards; this can only be assured by using our own expertise and craftsmanship.

# Tested Rating »recommended«

Parador is one of the leading brands for interior construction systems. To preserve our brand quality, we also undergo external tests. In this respect our quality standard goes beyond the statutory provisions, and which is demonstrated by various voluntary certifications.

## ClickBoard



### LGA quality certificate

The physical construction properties as well as the use and handling of Parador ClickBoard are tested by the Landesgewerbeanstalt of Bavaria together with TÜV Rheinland. The LGA quality certificate also confirms that the requirements of the product standard are fulfilled.



### LGA tested for harmful substances

The quality seal of ecological product testing identifies products that are low on emissions and that have been tested for harmful substances. Parador ClickBoard not only meets the award requirements but comes below them.



### Blue Angel

The »Blue Angel« certifies Parador ClickBoard as a low emission product. The eco-label RAL-UZ 176 is awarded by the German Institute for Quality Assurance and Certification with the participation of the Federal Environment Agency.



### Émissions dans l'air intérieur (Class A+)

This national classification in France identifies the quality of the indoor air.



### PEFC™

PEFC™ is a global organisation with the aim of establishing sustainable forestry worldwide. Every product that bears the PEFC™ label, comes from a certified product chain, in which the forestry management, including the transport of the wood to the forest road, is featured.

## Panels



### LGA quality certificate

The physical construction properties as well as the use and handling of Parador panels are tested by the Landesgewerbeanstalt of Bavaria together with TÜV Rheinland. The LGA quality certificate also confirms that the requirements of the product standard are fulfilled.



### LGA tested for harmful substances

The quality seal of ecological product testing identifies products that are low on emissions and that have been tested for harmful substances. Parador panels not only meet the award requirements but come below them.



### Blue Angel

The »Blue Angel« certifies Parador panels as a low emission product. The eco-label RAL-UZ 176 is awarded by the German Institute for Quality Assurance and Certification with the participation of the Federal Environment Agency.



### Émissions dans l'air intérieur (Class A+)

This national classification in France identifies the quality of the indoor air.



### PEFC™

PEFC™ is a global organisation with the aim of establishing sustainable forestry worldwide. Every product that bears the PEFC™ label, comes from a certified product chain, in which the forestry management, including the transport of the wood to the forest road, is featured.



—  
living performance



# Design as an expression of personality

For Parador, design is more than decor, format and texture: it means concentrating on the essential, classic and modern home-living, function and aesthetics.

With Parador ClickBoard and Parador panels, wall and ceiling areas turn from architectural necessities into expressive elements of individual furnishing style.





# Surface textures

## For a complete image

High quality and authentic decors for classic to modern home-living acquire their particular feel from special surface textures. It gives the design depth and makes it tangible.

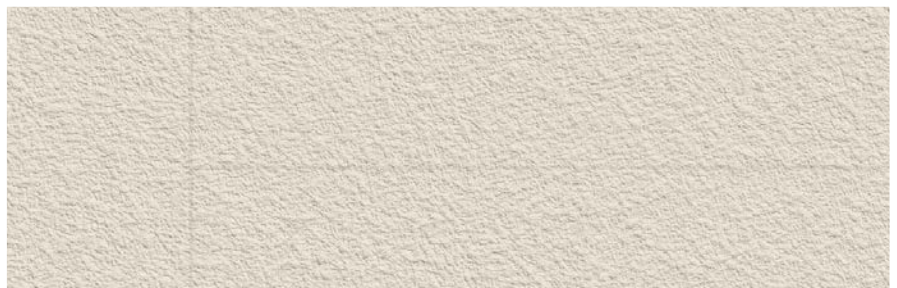
# Groove design

## An important detail

The characteristic profile of a surface is determined by its groove pattern. Whilst Parador ClickBoard is installed without grooves and thereby creates an almost flat look without transitions, the groove underlines the individual character of the single panels.

### Without groove ClickBoard

In the case of the installation without grooves, the panels are joined together without noticeable gaps.



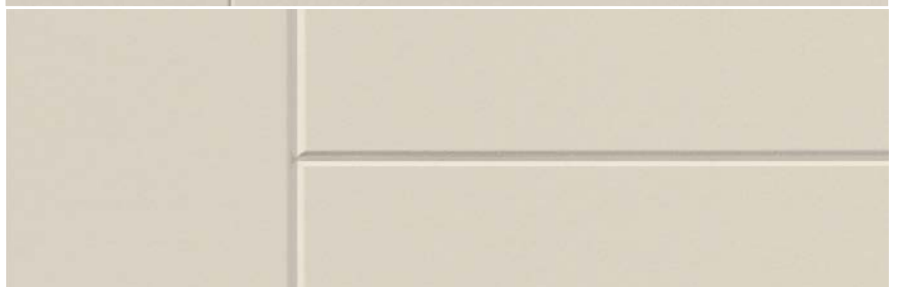
### Design groove RapidoClick/ MilanoClick panels

The design groove ensures delicate transitions and an exclusive look.



### 0 cm groove Novara panel

Modern 0 cm joint due to all-round softline edge. The individual panels are especially emphasised.







Oak Vintage

RapidoClick



Parador

ClickBoard and panels

# Parador ClickBoard

## Makes more of walls and ceilings

For creating a high quality design on optically large walls without grooves, for ceilings and sloping roofs or for deliberately accentuating individual areas: Parador ClickBoard is the first ready-to-use panel for the home.



Suitable for damp rooms



Suitability for light fittings



Lightfast



Safe-Lock®





## Parador panels

### Multi-talent

Whether it is for a loft extension, new build or renovation: with Parador Novara, RapidoClick and MilanoClick panel systems, demanding DIY enthusiasts and craftsmen will find functional and stylish solutions for fulfilling a wide range of design requirements.



Suitable for damp rooms



Click mechanism



Lightfast



Tongue and groove push-in profile



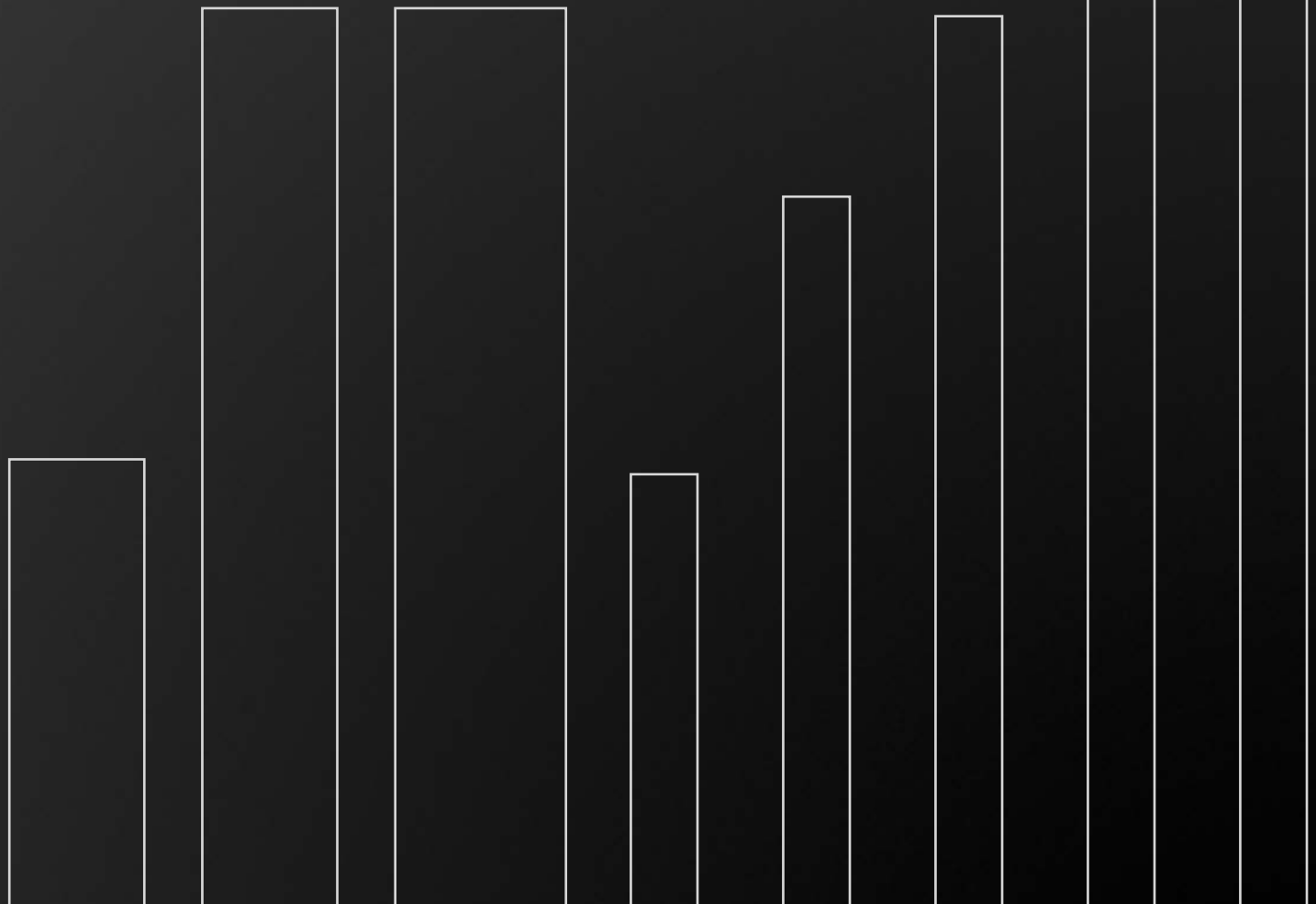
Suitability for light fittings

# Formats

## The rhythm of aesthetics

### ClickBoard

### Panels



①

ClickBoard

1285 x 389 mm<sup>1</sup>

②

ClickBoard

2585 x 389 mm<sup>1</sup>

③

ClickBoard

2585 x 492 mm<sup>1</sup>

④

Panel  
Novara1242 x 192 mm<sup>2</sup>

⑤

Panel  
Novara2042 x 192 mm<sup>2</sup>

⑥

Panel  
Novara2562 x 192 mm<sup>2</sup>

⑦

Panel  
Novara3292 x 192 mm<sup>2</sup>

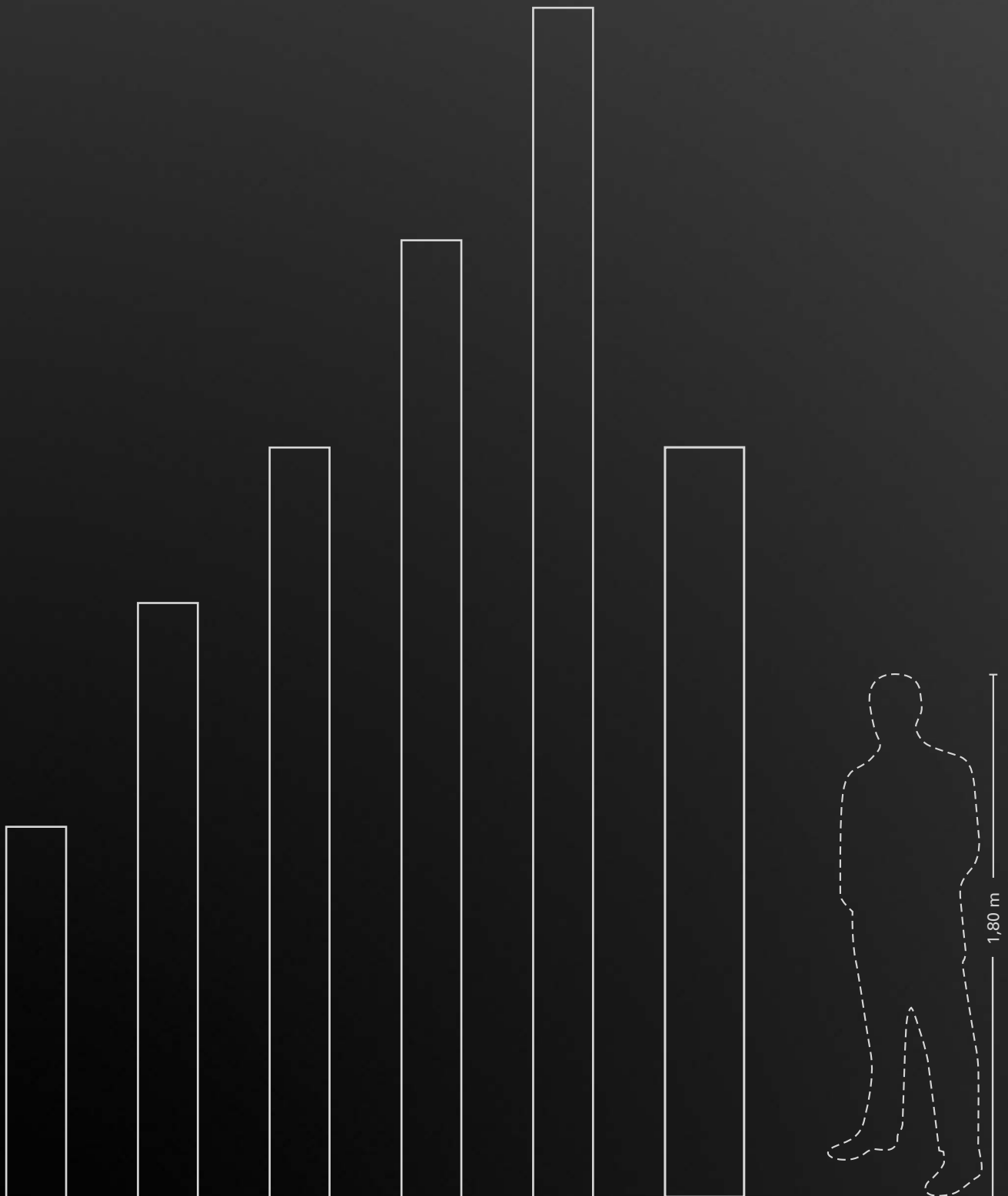
⑧

Panel  
Novara4092 x 192 mm<sup>2</sup>

<sup>1</sup>Plank thickness: 12 mm, <sup>2</sup>Plank thickness: 10 mm

Format details on panels are covering dimensions.





⑨

Panel  
RapidoClick

1274 x 206 mm<sup>1</sup>

⑩

Panel  
RapidoClick

2044 x 206 mm<sup>1</sup>

⑪

Panel  
RapidoClick

2579 x 206 mm<sup>1</sup>

⑫

Panel  
RapidoClick

3294 x 206 mm<sup>1</sup>

⑬

Panel  
RapidoClick

4094 x 206 mm<sup>1</sup>

⑭

Panel  
MilanoClick

2579 x 272 mm<sup>1</sup>

# ClickBoard

## Makes more of walls and ceilings



Concrete look  
fine plaster

ClickBoard

# ClickBoard

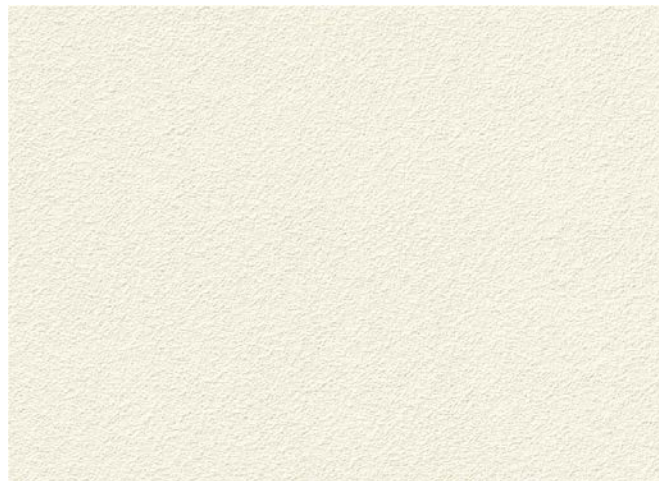
## Colours, textures and decors



### Concrete look

fine plaster

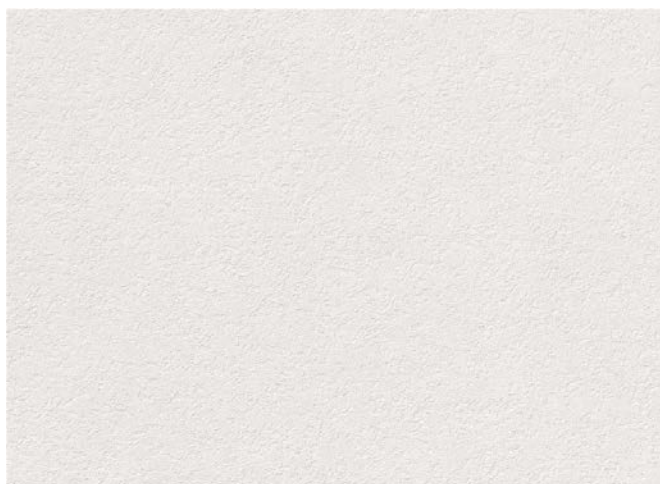
1285 × 389 × 12 mm	1602120
2585 × 389 × 12 mm	1602127
2585 × 492 × 12 mm	1602131



### Cream

fine plaster

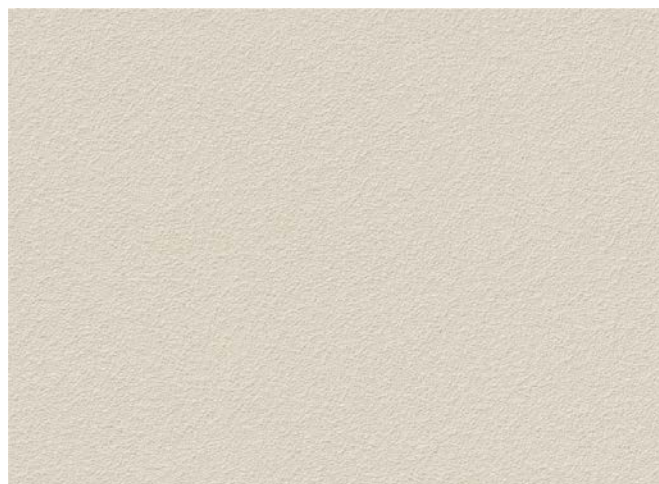
1285 × 389 × 12 mm	1085865
2585 × 389 × 12 mm	1085866
2585 × 492 × 12 mm	1085867



### Primed texture

untreated

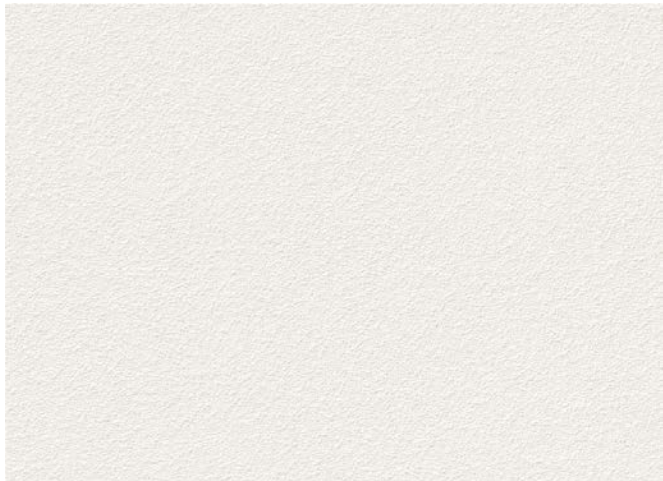
1285 × 389 × 12 mm	1085197
2585 × 389 × 12 mm	1085198
2585 × 492 × 12 mm	1085199



### Taupe

fine plaster

1285 × 389 × 12 mm	1602118
2585 × 389 × 12 mm	1602121
2585 × 492 × 12 mm	1602128



White

fine plaster

1285 × 389 × 12 mm	1085862
2585 × 389 × 12 mm	1085863
2585 × 492 × 12 mm	1085864



Whitesmoke

fine plaster

1285 × 389 × 12 mm	1602119
2585 × 389 × 12 mm	1602126
2585 × 492 × 12 mm	1602130

# Panels

## Multi-talent





Matt-finish taupe

Novara

# Panels

## Colours, textures and decors



### Oak grey

#### Novara

1242 × 192 × 10 mm 1602361  
2562 × 192 × 10 mm 1602371

#### RapidoClick

1274 × 206 × 12 mm 1602407  
2044 × 206 × 12 mm 1602417  
2579 × 206 × 12 mm 1602432



### Oak Vintage

#### Novara

1242 × 192 × 10 mm 1602364  
2562 × 192 × 10 mm 1602374

#### RapidoClick

1274 × 206 × 12 mm 1602412  
2044 × 206 × 12 mm 1602425  
2579 × 206 × 12 mm 1602440



### Ash white planked

#### Novara

1242 × 192 × 10 mm 587071  
2042 × 192 × 10 mm 1602366  
2562 × 192 × 10 mm 587081  
3292 × 192 × 10 mm 1602376  
4092 × 192 × 10 mm 1602384

#### RapidoClick

1274 × 206 × 12 mm 1173805  
2044 × 206 × 12 mm 1258512  
2579 × 206 × 12 mm 1173946  
3294 × 206 × 12 mm 1602445  
4094 × 206 × 12 mm 1602454



### Ash white shining planked

#### Novara

1242 × 192 × 10 mm 587070  
2042 × 192 × 10 mm 1602367  
2562 × 192 × 10 mm 587080  
3292 × 192 × 10 mm 1602380  
4092 × 192 × 10 mm 1602387

#### RapidoClick

1274 × 206 × 12 mm 1134662  
2044 × 206 × 12 mm 1258513  
2579 × 206 × 12 mm 1134599  
3294 × 206 × 12 mm 1602451  
4094 × 206 × 12 mm 1602459

#### MilanoClick

2579 × 272 × 12 mm 1258526

Format details are covering dimensions.



Pine light brushed

**Novara**

1242 × 192 × 10 mm 1369360  
2562 × 192 × 10 mm 1369361

**RapidoClick**

1274 × 206 × 12 mm 1369336  
2044 × 206 × 12 mm 1369337  
2579 × 206 × 12 mm 1369338



Pine white

**Novara**

1242 × 192 × 10 mm 1602362  
2562 × 192 × 10 mm 1602372

**RapidoClick**

1274 × 206 × 12 mm 1602410  
2044 × 206 × 12 mm 1602421  
2579 × 206 × 12 mm 1602437



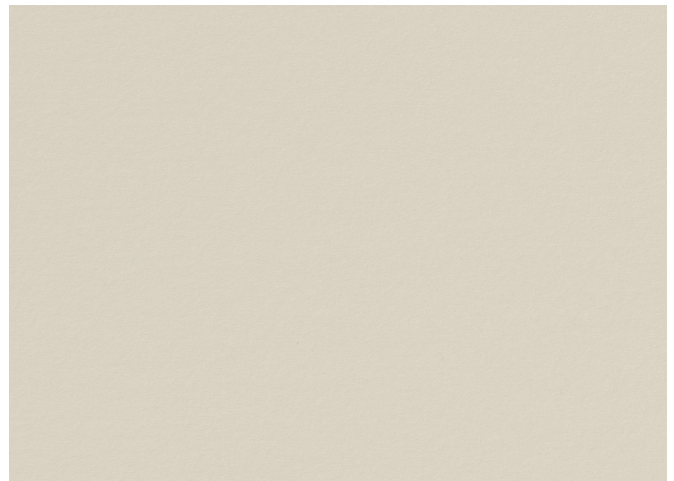
Romana

**Novara**

1242 × 192 × 10 mm 1173968  
2562 × 192 × 10 mm 1173983

**RapidoClick**

1274 × 206 × 12 mm 1173944  
2044 × 206 × 12 mm 1258514  
2579 × 206 × 12 mm 1173963



Matt-finish taupe

**Novara**

1242 × 192 × 10 mm 1602360  
2562 × 192 × 10 mm 1602370

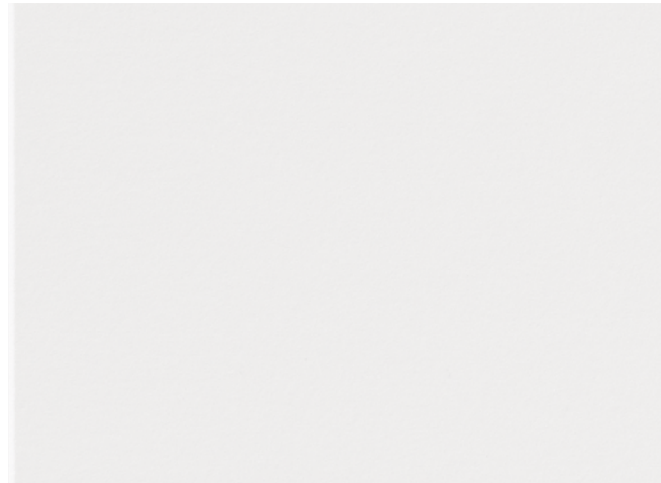
**RapidoClick**

1274 × 206 × 12 mm 1602406  
2044 × 206 × 12 mm 1602415  
2579 × 206 × 12 mm 1602431



# Panels

## Colours, textures and decors



### Matt-finish white

#### Novara

1242 × 192 × 10 mm	1602359
2042 × 192 × 10 mm	1602368
2562 × 192 × 10 mm	1602369
3292 × 192 × 10 mm	1602381
4092 × 192 × 10 mm	1602388

#### RapidoClick

1274 × 206 × 12 mm	1602389
2044 × 206 × 12 mm	1602413
2579 × 206 × 12 mm	1602428
3294 × 206 × 12 mm	1602452
4094 × 206 × 12 mm	1602460



### Sisal

#### Novara

1242 × 192 × 10 mm	1602363
2562 × 192 × 10 mm	1602373

#### RapidoClick

1274 × 206 × 12 mm	1602411
2044 × 206 × 12 mm	1602423
2579 × 206 × 12 mm	1602439



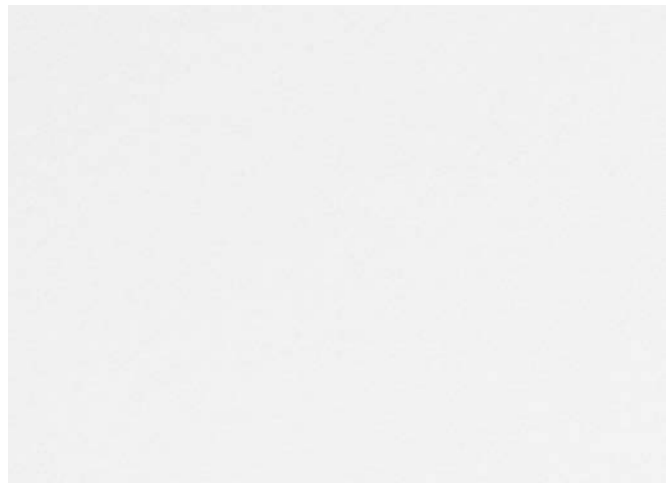
### Structure white

#### Novara

1242 × 192 × 10 mm	1602365
2562 × 192 × 10 mm	1602375

#### RapidoClick

1274 × 206 × 12 mm	1602408
2044 × 206 × 12 mm	1602419
2579 × 206 × 12 mm	1602434



### White high gloss

#### Novara

1242 × 192 × 10 mm	1258128
2562 × 192 × 10 mm	1258130

#### RapidoClick

1274 × 206 × 12 mm	1258326
2044 × 206 × 12 mm	1258520
2579 × 206 × 12 mm	1258525

#### MilanoClick

2579 × 272 × 12 mm	1258536
--------------------	---------

Format details are covering dimensions.

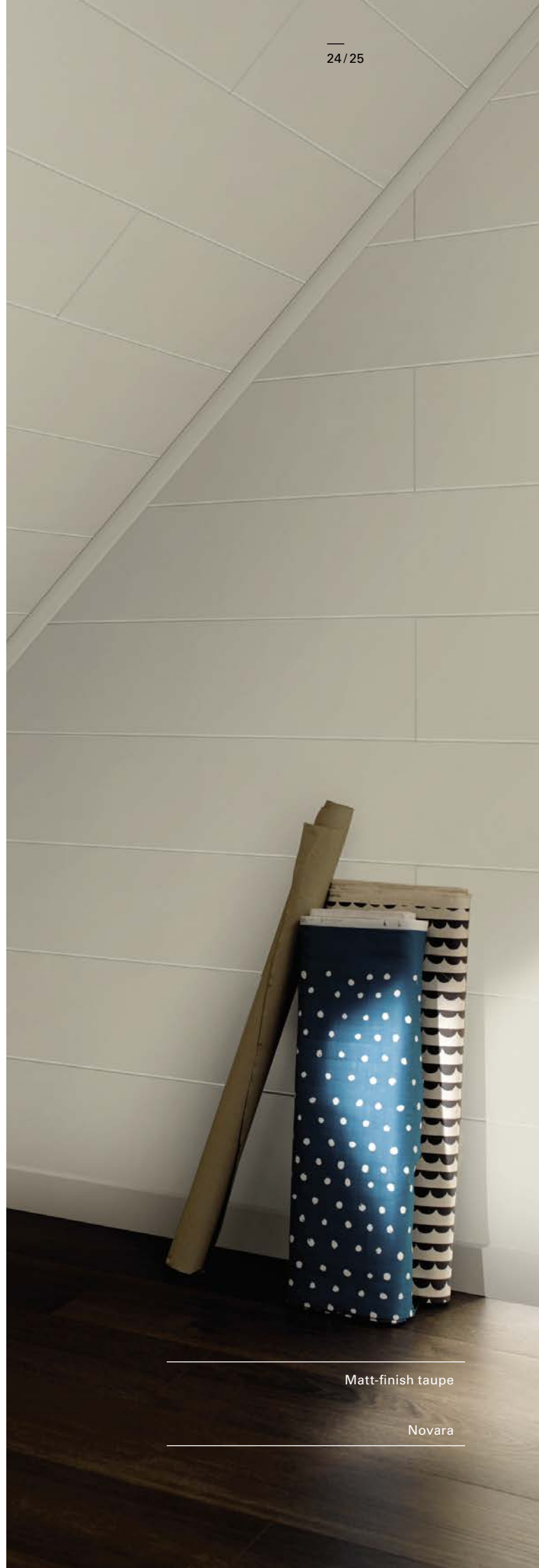
All wood and stone decors are brilliant imitations.



Concrete

MilanoClick

2579×272 ×12mm 1326698



—  
Matt-finish taupe

—  
Novara







Ash white shiing planked

RapidoClick

## Assortment at a glance

## ClickBoard

Makes more of walls and ceilings

Assortment		ClickBoard		
Appearance	Decor variety	6 decors		
	Surfaces	2 varieties		
	Groove pattern	✓		
Quality	Guarantee	10 years		
	Technology			
	Covering measurement	1285 × 389 × 12 mm	2585 × 389 × 12 mm	2585 × 492 × 12 mm
	Calculation measurement			
	Intended use	Ceiling	✓	
		Loft extension	✓	✓
		Facing formwork	✓	✓
		Lightweight partition wall	✓	✓
HDF core board		✓		
MDF core board				
Suitable for damp rooms		✓		
Lightfast		✓		
Suitability for light fittings		✓		
Profile		✓		

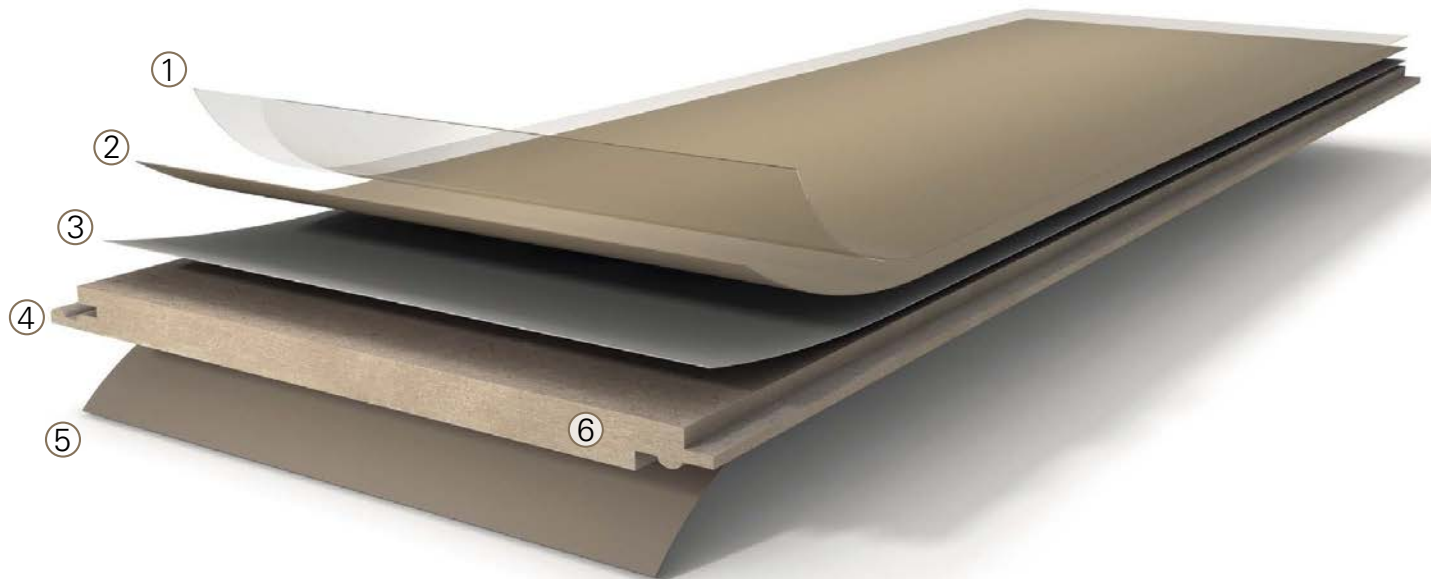
Panels  
Multi-talent

Novara	RapidoClick	MilanoClick
12 decors	12 decors	3 decors
–	–	–
	✓	✓
✓		
10 years	10 years	10 years
1242 / 2042 / 2562 / 3292 / 4092 × 192 × 10mm	1274 / 2044 / 2579 / 3294 / 4094 × 206 × 12mm	2579 × 272 × 12mm
1250 / 2050 / 2570 / 3300 / 4100 × 200 × 10mm	1280 / 2050 / 2585 / 3300 / 4100 × 223 × 12mm	2585 × 289 × 12mm
✓	✓	✓
✓	✓	✓
✓	✓	✓
	✓	✓
✓		
✓	✓	✓
✓	✓	✓
✓		
	✓	✓

# ClickBoard

## Function and technology

Besides its impressive appearance, Parador ClickBoard is compelling due to its functional composition and intelligent technology. The result of this »made in Germany« workmanship: durable, suitable for damp areas, lightfast and heat resistant. With the patented click mechanism and thanks to ergonomic panel sizes, the assembly process is effortless and safe.



①

**Overlay**

The highly wear-resistant and water-tight top layer made of melamine resin with an embossed texture provides an authentic feel and effective protection.

②

**Decor paper**

The elaborately reproduced decors are fascinating with amazingly genuine imitations of many natural materials. The decor print made with solvent-free colours impresses with extraordinary brilliance. The impregnation using melamine resin also protects against moisture and mechanical loads.

③

**Barrier paper**

Hides the colour of the support material for a clear decor appearance through and through.

④

**HDF core board**

The highly compressed, swell protected core board provides high dimensional stability and thus minimises the influences caused by climate fluctuations or unusual loads. In addition, the all-round edge impregnation ensures excellent edge swell protection.

⑤

**Balancing layer**

The reverse side of the ClickBoard is formed by the balancing layer paper, which compensates against tension and prevents the panels from warping. At the same time it protects the core board against penetrating moisture from the wall or ceiling.

⑥

**Safe-Lock®**

Due to the patented click mechanism with Safe-Lock® profile, the planks easily click in, thus enabling them to be joined together quickly and easily.

# Panels

## Function and technology

Like all Parador products for walls and ceilings, the panels are also made almost one hundred per cent out of wood. Systematically finished, Parador panels, with their brilliant decors, different widths and installation-friendly formats with or without grooves, can be universally used on walls and ceilings in all areas of a house, including kitchens and bathrooms.

### RapidoClick/MilanoClick



### Novara





①

**Decor paper**

The elaborately reproduced decors are fascinating with amazingly genuine imitations of many natural materials. The decor print made with solvent-free colours impresses with extraordinary brilliance. The impregnation using melamine resin also protects against moisture and mechanical loads.

②

**HDF core board**

The highly compressed, swell protected core board provides high dimensional stability and thus minimises influences caused by climate fluctuations or unusual loads. In addition, the all-round edge impregnation ensures excellent edge swell protection.

③

**Click connection**

The patented click mechanism makes the assembly process easy and the connections secure.

①

**Decor paper**

The elaborately reproduced decors are fascinating with amazingly genuine imitations of many natural materials. The decor print made with solvent-free colours impresses with extraordinary brilliance. The impregnation using melamine resin also protects against moisture and mechanical loads.

②

**MDF core board**

The core, made of a medium-dense chipboard panel, possesses particularly high breaking and bending strength. The core board fulfils the international E1 emission figure.

③

**Tongue and groove push-in connection**

Thanks to the tried and tested tongue and groove push-in connections, ceiling panels can be quickly and easily attached to substructures.

# Accessories

## Beauty with system

Those who want to create permanently attractive rooms with the design of walls and ceilings opt for quality every time. As a system supplier, Parador stocks exactly co-ordinated accessories, for assembly and value retention: from profiles, rails, clips and end caps through to care products, Parador offers quality from one source: perfection – thought through to the end.



### Profiles

For the perfect finish

Parador offers a suitable selection of profiles and rails for ClickBoard as well as ceiling profiles, special profiles and external and internal corners for panels, which help to make finishes and transitions effortless. Different profile shapes and decors enable the perfect match to all wall and ceiling areas. The patented clip technology of the decor panel ceiling profiles stands for easy assembly: the profiles are pushed onto special clips and can easily be removed at any time.

- › High quality MDF core
- › Suitable for damp rooms
- › Torsion-free
- › Fully encased at edges
- › Excellent surface quality



### Substructure

Solid preparation

An easy panel installation requires a well aligned substructure at right angles to the long edge of the panels. Direct substructures made of wood usually consist of a single or double timber battening (counter-battening).

A substructure made of metal is directly fastened using standard profiles. In the Parador advice section, Parador gives further information about the assembly process.



### Work aids

Surface care and value retention

The surfaces of ClickBoard and panels are extremely easy to maintain. The surfaces are wiped with a damp, well wrung out cloth and a standard, non-film forming cleaning agent.

Matching tools and miscellaneous accessories, such as the ClickBoard repair compound, round off the range. This comprehensive all-round carefree package ensures lasting value and satisfaction with your wall and ceiling design.

Further information:



Appearance



Quality



Technology



Profiles



Accessories



FAQs

## Profiles overview

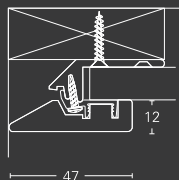
Ceiling and end profiles for various application areas

### Profiles for ClickBoard



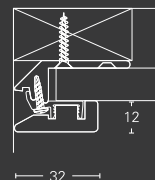
#### Universal profile

Universal profiles are used as edge fastening on ClickBoard for external and internal corners, as well as for a wide range of connections and covers.



#### End profile

End profiles are used all round the surface as edge fastening on ClickBoard and to cover the gap at the edge.



### Decor panel ceiling profiles



#### Ceiling profile DAL 1

Discreetly rounded end profile for a modern ambience.

Assembly with brown clips



#### Ceiling profile DAL 2

Curved, unobtrusive end profile for a classic, homely ambience.

Assembly with brown clips



#### Ceiling profile DAL 3

Straight, sleek end profile for an elegant, modern ambience.

Assembly with brown clips



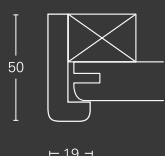
### Special profiles for panels



#### Rebate moulding FL1

For covering visible substructures. In panel colours.

Assembly without clips.



#### Rebate moulding FAL

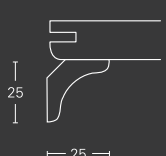
Used like a spring, the FAL rebate moulding creates neat transitions on all angles from 1 to 180°.



#### Concave HKL

For ceiling finishes and hidden cable routing. In panel colours.

Assembly without clips



# Setting standards

## Practising responsibility

As a traditional wood processing company, we have a particular awareness for our environment. For us at Parador, living with a certain quality standard goes hand in hand with the responsibility to conserve the planet for future generations. This includes handling our resources sustainably – by means of active reforestation. Every product made of wood makes an active contribution towards climate protection. As the only easily reproducible systems, trees break down CO<sub>2</sub>, the greenhouse gas responsible for climate warming, into oxygen and carbon.

As carbon reservoirs essential for the survival of the planet, people will increasingly become conscious of using wood products, especially in building and renovation. Products made of wood and wood-based materials are sustainable and help to secure the future of the next generations.



### FSC®certification

Wood products that come from forests managed in an exemplary manner are awarded this trademark. For this purpose, the Forest Stewardship Council (FSC®) sets strict environmental requirements worldwide as well as high social and economic standards. Parador takes this path voluntarily out of conviction.



### PEFC™certification

PEFC™ is a global organisation with the aim of establishing sustainable forestry worldwide. Every product that bears the PEFC™ label, comes from a certified product chain, in which the forestry management, including the transport of the wood to the forest road, is featured.

## Responsibility in society.

As an internationally operating company, we are aware of our social responsibility. We have been committed to the Plant-for-the-Planet foundation since 2011.

Children from all over the world have come together to form a network under the umbrella of the student initiative - with the aim of ending the climate crisis. Their way of achieving this: acting immediately, because tough talks do not stop the glaciers and rain forests from disappearing. Instead, Plant-for-the-Planet is planting trees as a sign of climate justice - until a billion new trees are planted worldwide by 2020.

As a wood processing company, active reforestation in particular is an important element of our social responsibility. We support the initiative with tree-planting campaigns, children's academies and numerous other events. And with great success: in the meantime we have trained nearly 400 children to be climate ambassadors and planted over 100,000 trees.

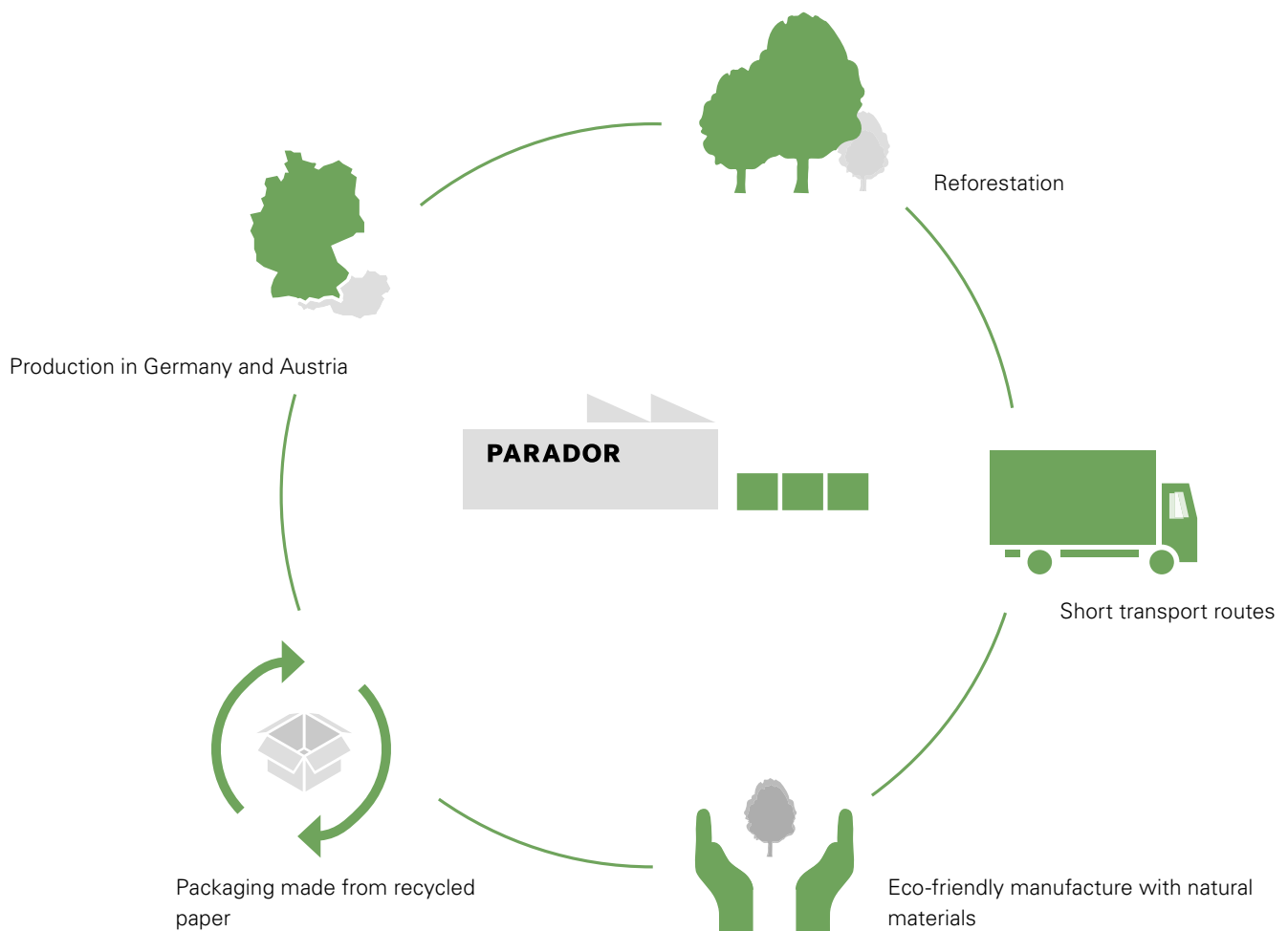


## Responsibility in production

Starting with production, we set standards with our innovative floors and panels across their entire life cycle. We thus develop and produce solely at our sites in Germany and Austria. The focus here is on environmentally-friendly manufacturing with natural materials. We get our main raw material, wood, from predominantly sustainably managed forests. We are therefore able to supply real wood that comes solely from monitored sources of supply. The environmental standards defined by us apply along the entire value creation chain, starting with our suppliers.



## Production cycle



Our work is characterised by the way we conserve resources. We prevent emission and feed recyclable materials back into the production cycle. Whilst the use of predominantly domestic timbers in the manufacture of engineered wood guarantees short transport routes, the support material of our other floors and panels consists entirely of recyclable materials. The decor papers used on our laminate floors are composed of certified materials.







# www.parador.eu

Laminate flooring | Vinyl flooring | Engineered wood flooring  
ClickBoard | Panels | Mouldings and Accessories

Parador GmbH & Co. KG  
Millenkamp 7-8  
48653 Coesfeld  
Germany

Hotline +49 (0)2541 736 678  
info@parador.eu  
www.parador.de  
www.facebook.com/parador

As at: 01/2016 © Parador  
Errors and changes excepted  
Media code 1612755

