



ELEGANCE
AND
EVOLUTION
OF THE LVT

COMPANY

The history of Floover began to take shape in 2006 with the union of Andrea Prati and Joan Ferrer , friends and co-owners with extensive experience in the flooring business. Based on the needs and requests of their customers, they developed a new product, Floover, multilayer rigid flooring with designs based on high-end vinyl with the Unilin click system. Later, they developed other versions and incorporated waterproof unlimited designs with remarkable success.

The aim of Floover is the continuous search for new and amazing products always based on the latest design and fashion, intending to improve the quality of life. Innovation and imagination have always been the basis of the brand and are key to its reputation in the market place, involving designers and architects to provide added value to the product. To date, Floover has achieved significant international presence.





PRODUCTS

Floover's main production is located in Müstair, Switzerland, where the entire production process complies with Swiss law and with the European norms and standards, in addition to the very strict quality controls.

Floover provides products for both domestic and commercial use, always using new technologies and creating solutions demanded by the market, from gluing systems (Glue Down), through the floor with click system, to exterior solutions. All Floover products are easy to install and are specifically designed for high durability and longevity. All this is complemented with accessories needed to complete any project.

The extensive collection of designs can be installed in any space, including wet areas like bathrooms or terraces, Floover is the ultimate solution to your project.

original

NATURAL

The Natural range is a new line of wood designs. Neat and clean designs from a natural oak in 5 different colors. The natural range has twice as much patterns and thus less repetition in the design, which gives an even more natural impression of the flooring as a whole.



NT1201
White Washed



NT1202
Grey Oak



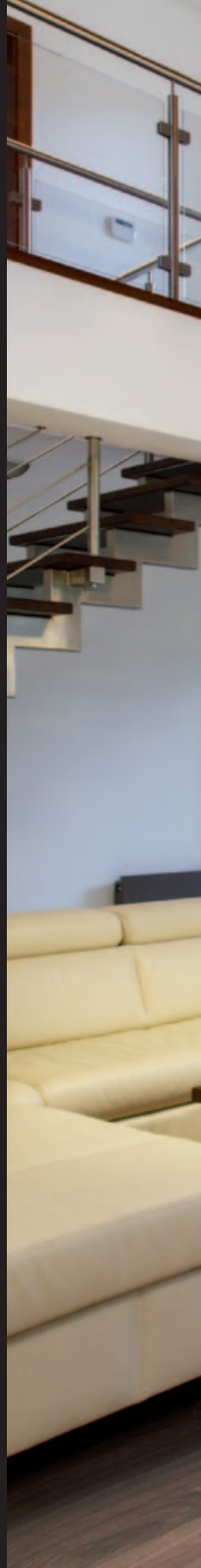
NT1203
Volcano



NT1204
White Oak



NT1205
Natural Oak



NEW
COLLECTION
2016



Measurements: 1235 x 230 mm
Wear Layer Thickness: 0,3 mm



NEW
COLLECTION
2016

original

URBAN

The urban range is a new line of wood designs thought and conceived for city hotels and apartments alike:
Clean wood design in 4 different colors,
without knots, wood grain, neat.



UB1206
Kensington



UB1207
Chelsea



UB1208
Knightsbridge



UB1209
Belgravia



Measurements: 1235 x 230 mm
Wear Layer Thickness: 0,3 mm

original **LUXURY**

The luxury range aims to represent the most exotic wood designs and is conceived for residential objects with a noble and luxurious atmosphere.



LX1210
Chesnut



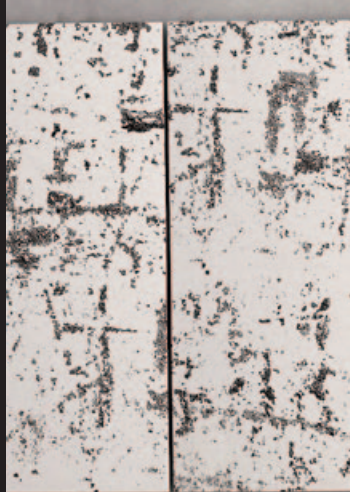
LX1211
Walnut Grey



LX1212
Walnut



LX1213
Maple



NEW
COLLECTION
2016



Measurements: 1235 x 230 mm
Wear Layer Thickness: 0,3 mm



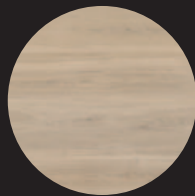
Measurements: 1800 x 305 mm
Wear Layer Thickness: 0,55 mm

NEW
COLLECTION
2016

long

LONGBOARD

This line introduces four new Floover colours on an innovative and modern plank size and enables to visually widen the room and create a classic atmosphere.



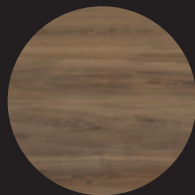
LB9001
Molokai



LB9002
Gardner



LB9003
Necker



LB9004
Laysan

NEW
COLLECTION
2016



plus
PLUS

The increased thickness of PVC guarantees maximum resistance of use and maximum resistance under any conditions of use and maximum protection against stains and chemicals.



IRT2005
Iron



IRT2006
Iron Gold



CMT2007
Cement Silver



CMT2008
Cement White



WDT2001
Wood Wenge



WDT2002
Wood White



WDT2003
Industrial Grey



WDT2004
Industrial Brown



CRT2104
Black Slate



Measurements:
915x305mm / 620x450mm
Wear Layer
Thickness: 0,55 mm



Measurements: 1230 x 225 mm
Wear Layer Thickness: 0,3 mm

original SEQUOIA

Floover Sequoia is a really impressive line... Due to the length of its planks, its superficial texture and its decors, this line is particularly suitable for creating beautiful natural designs on the floor.



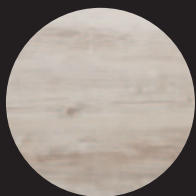
SQ1801
Ancient Oak



SQ1805
Oak Limewashed



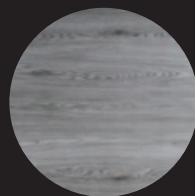
SQ1806
Aspen Oak



SQ1807
Ash



SQ1808
Barrel Grey



SQ1809
Excelsior Grey



Measurements: 915 x 305 mm
Wear Layer Thickness: 0,3 mm

original

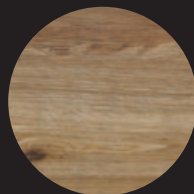
COUNTRY



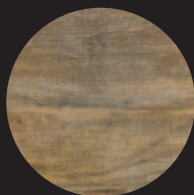
CT1702
Tradition Classic



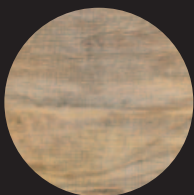
CT1703
Tradition Lime Washed



CT1704
Tradition Authentic



CT1706
Rustic Old



CT1707
Rustic Natur



CT1708
Rustic Light

The flooring Floover Country, in its vivid and welcoming aspect, is able to give a hospitable warmth that can make your guests feel at ease. This collection consists of wood look decors so realistic that they recreate rustic and natural scenarios like those of old country houses.

original WOOD

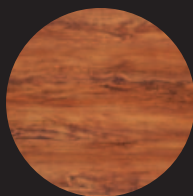
All the warmth and taste of genuine and authentic life reborn today in environments carefully designed to make you feel at home. Reassuring atmosphere, personality and ancient virtues meet the current values , giving rise to a new interpretation of natural spontaneity.



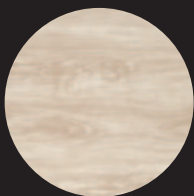
WD1003
Wenge



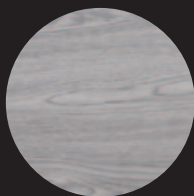
WD1004
White Grey



WD1005
Jatoba



WD1006
Maple



WD1007
Oak Grey



WD1009
Oak White



Measurements: 915 x 305 mm
Wear Layer Thickness: 0,3 mm



Measurements: 915 x 305mm / 620 x 450 mm
Wear Layer Thickness: 0,3 mm



original **STONE**

Broadens the horizons of your imagination.
A collection with infinite possibilities and
unique characteristics of durability and
comfort designed to meet all your needs
with extraordinary simplicity.



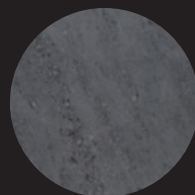
CR1102
Ceramic Perla



CM1305
Cement Grey



CM1304
Cement Dark



CR1103
Ceramic Antracita



CM1307
Concrete Light



CM1306
Concrete Dark



original

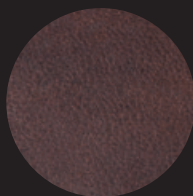
LEATHER

Measurements:
915x305mm / 620x450mm
Wear Layer Thickness: 0,3 mm

Seduction and modernity. Due to its so real texture that appears to be genuine leather, with the slightest touch you are almost transported to a truly glamorous dimension.



LE1601
Leather Black



LE1602N
Leather Brown



LE1603
Leather Crocodile

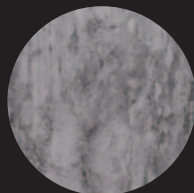
original

METALLIC



Measurements:
915x305mm / 620x450mm
Wear Layer Thickness: 0,3 mm

Recreate futuristic, modern and avant-garde spaces. Thanks to the originality of its color and to the elegant texture, it is the perfect flooring for fine design.



MT1401
Metallic Silver



MT1404
Metallic Swing



Measurements: 1230 x 305 mm
Wear Layer Thickness: 0,55 mm

synchro

ENDLESS

The sophisticated design that results from simply joining the boards gives the impression of a unique 2.46m long single plank. The synchronisation technology of the surface assigns three dimensional effects. The combination of these two revolutionary applications gives an intense depth to the flooring that broadens your horizon and is especially appreciated by innovative designers and architects.



SC3013
Endless Old



SC3014
Endless Antique



SC3015
Endless Real



SC3016
Endless Ice



SC3017
Endless Modern

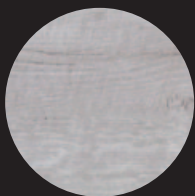


SC3018
Endless Warm

synchro

RUSTIC

The synchronous pore structure is one of the most innovative decorative elements in the flooring design, as it is capable of superbly enhancing the natural grain and contrasts of the wood, giving depth and realism to the entire surface. The synchro range perfectly embodies all these features and guarantees high abrasion resistance thanks to the 0.55mm wearing surface.



SC3001
Rustic Oak Moscow



SC3002
Rustic Oak Stockholm



SC3003
Rustic Oak Zurich



SC3004
Rustic Oak Amsterdam



SC3005
Rustic Oak Berlin



SC3006
Rustic Oak Dublin



Measurements: 1230 x 225mm
Wear Layer Thickness: 0,55 mm



Measurements: 1230 x 305 mm
Wear Layer Thickness: 0,55 mm

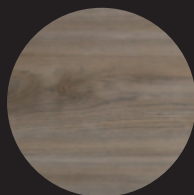
synchro

PLANK

The synchronous structure enhances the natural grain and contrasts of the wood, giving depth and realism to the entire surface. Synchro range guarantees and ensures, thanks to a surface of 0.55 mm, a high abrasion resistance.



SC3007
Plank Harmony Dark



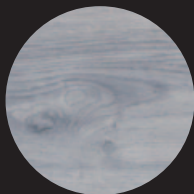
SC3008
Plank Harmony Accent



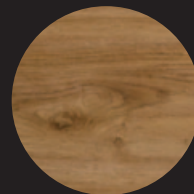
SC3009
Plank Harmony White



SC3010
Plank Harmony Light



SC3011
Plank Harmony Grey



SC3012
Plank Harmony
Classic



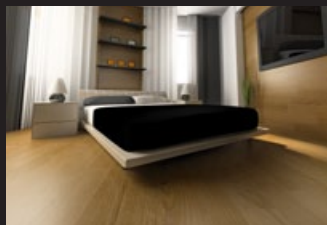
< Original Natural
NT1205 Natural Oak
1235 x 230 mm
Private Home
Luzern (Switzerland)



< Original Urban
UB1206 Kensington
1235 x 230 mm
Private apartment
Marsella (France)



^ Original Luxury
LX1210 - Chesnut
1235 x 230 mm
Private Home.
Ordino (Andorra)

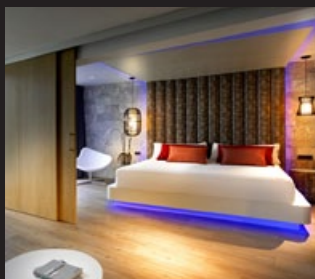


^ Original Longboard
LB9002 Gardner
1800 x 230 mm
Private Room
Barcelona (Spain)

< Group Plus
IRT2005 Iron
620 x 450 mm
Luxor Hotel
Wien (Austria)



< Original Sequoia
SQ1802 Pastel Oak
1230 x 225 mm
Stefanel Shop
Kraków (Poland)

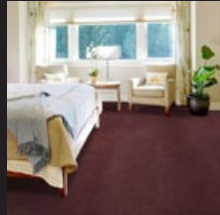


^ Original Country
CT1702 Tradition classic
915 x 305 mm
Hard Rock Hotel. Ibiza (Spain)

Original Wood >
WD1007 Oak Grey
915 x 305 mm.
Private home
Barcelona (Spain)



< Original Stone
CM1305 Cement Grey
620 x 450 mm
Retail shop
Manchester (UK)



^ Original Leather
LE1602N Leather Brown
620 x 450 mm
Private home
Madrid (Spain)

^ Original Metallic
MT1403 Metallic Black
620 x 450 mm
Savoy Club
Bydgoszcz (Poland)



^ Synchro Endless
SC3018 Endless Warm
1230 x 305 mm
Private home
Valldoreix (Spain)

Synchro Rustic >
SC3002 Rustic Oak
Design Furniture shop
1230 x 225 mm
Brussels (Belgium)



< Synchro plank
SC3009
1230 X 305 mm
Private home
Hong Kong (China)



Sagrada Família
SC3010 - Synchro Plank Harmony Light
Barcelona (Spain)

HEADQUARTERS

C/ Selva, 4 2nd Floor
08820 El Prat de Llobregat · Barcelona (Spain)
T. +34 938 913 310
info@floover.com

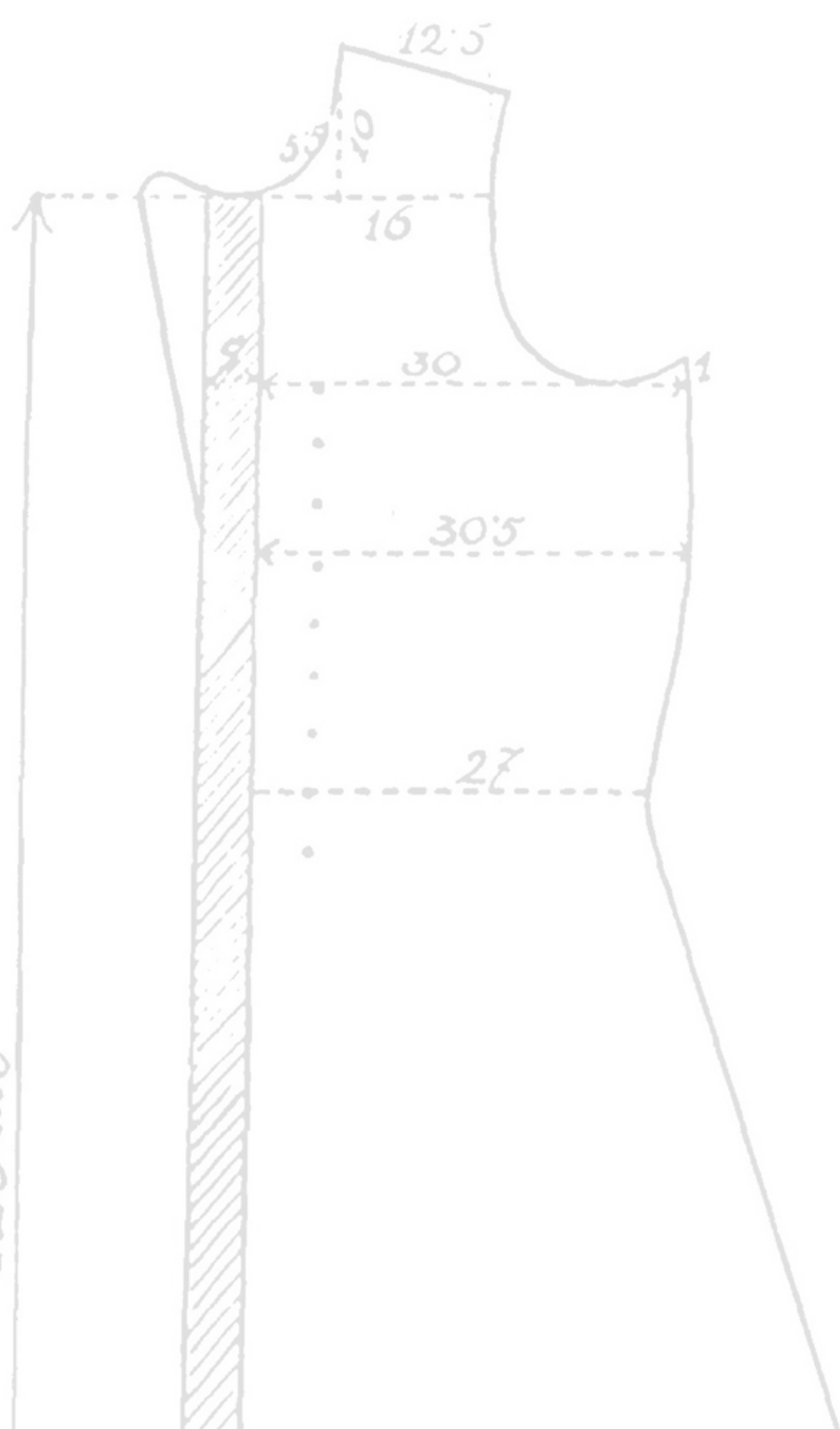
FACTORY

Palü Daint
CH-7537 Müstair (Switzerland)
T. +41 818 503 944

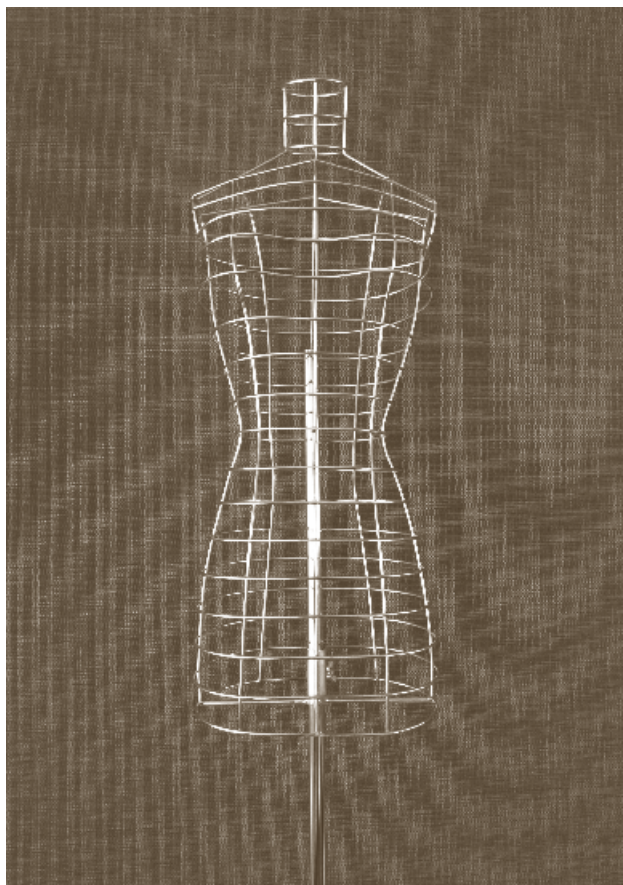




123 cm



INDOOR &
OUTDOOR
WOVEN
SOLUTIONS



COMPANY

The history of Floover began to take shape in 2006 with the union of Andrea Prati and Joan Ferrer, friends and co-owners with extensive experience in the flooring business. Based on the needs and requests of their customers, they developed a new product, Floover, multilayer rigid flooring with designs based on high-end vinyl with the Unilin click system. Later, they developed other versions and incorporated waterproof unlimited designs with remarkable success.

The aim of Floover is the continuous search for new and amazing products always based on the latest design and fashion, intending to improve the quality of life. Innovation and imagination have always been the basis of the brand and are key to its reputation in the market place, involving designers and architects to provide added value to the product. To date, Floover has achieved significant international presence.

PRODUCTS

Floover's main production is located in Müstair, Switzerland, where the entire production process complies with Swiss law and with the European norms and standards in addition to the very strict quality controls.

Floover provides products for both domestic and commercial use, always using new technologies and creating solutions demanded by the market, from gluing systems (Glue Down), through the floor with click system, to exterior solutions. All Floover products are easy to install and are specifically designed for high durability and longevity. All this is complemented with accessories needed to complete any project.

The extensive collection of designs can be installed in any space, including wet areas like bathrooms or terraces, Floover is the ultimate solution to your project.

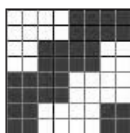
THE TEXTILE WITHOUT COMPROMISES



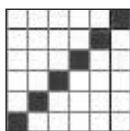


Floover Woven is an exclusive, inviting and unique woven vinyl product. The feeling of the textile is unmistakable, practically organic but the flooring, nevertheless, has all the advantages of vinyl: wear-resistant, easy to handle compared to textile floorings and simple to install.

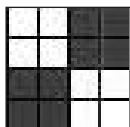
Woven combines the craftsmanship and creativity of the past with the possibilities offered by modern technology. A collection with a completely new inspiration, a strong textile feeling, high resistance and a unique look. The elasticity and acoustic insulation of its structure give this product great qualities of underfoot comfort.



< Pattern: 4012. 4006. 4010



< Pattern: 4013. 4014. 4015. 4016



< Pattern: 4001. 4008



*Woven fabric detail
with fiber glass core*

Woven is a vinyl fabric especially designed for both indoor and outdoor use. Daring and exclusive designs which help to achieve a modern touch. Easy to maintain, waterproof, heat and UV resistant. The woven fabric has variations in tone depending on the light, giving added value and highlighting its beauty, resulting in an optical effect.





*The feeling of the textile with
all the advantages of vinyl:
wear resistant, easy to clean
and simple to install.*



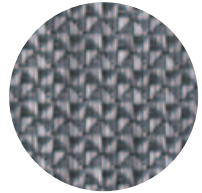


TAILOR-MADE WOVEN SOLUTIONS

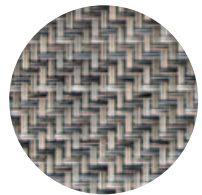
Our flooring can be fully tailored to your requirements. Floover provides the best solution for every need. 8 different solutions to adapt our Woven decors to every possible application.



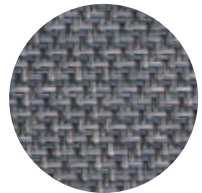
WV4001
Bold Grey



WV4004
Diamond Cut Grey



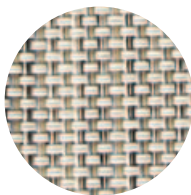
WV4006
Tranquility



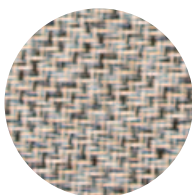
WV4010
Reflection



WV4002
Calm Beige



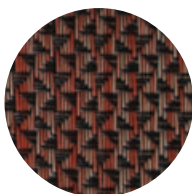
WV4008
Bold Beige



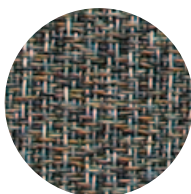
WV4012
Divine



WV4007
Spice



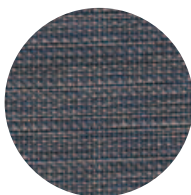
WV4005
Diamond Cut Red



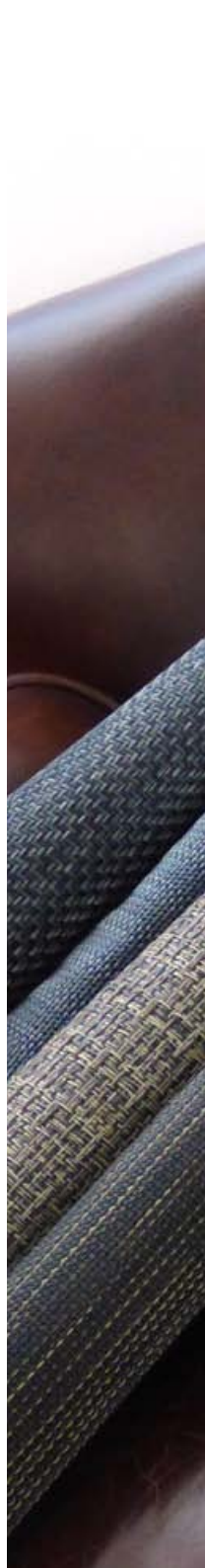
WV4009
Vitality



WV4011
Zest



WV4003
Calm Blue







WV4022
Silver



WV5201
Slate



WV4023
Aluminium



WV5205
Charcoal

The feeling of the textile is unmistakable, practically organic but the flooring, nevertheless, has all the advantages of vinyl: wear-resistant, easy to handle compared to textile floorings and simple to install.

OUTDOOR

SWIMMING POOLS
VERANDAS
PATIOS

INDOOR

CORRIDORS
RETAIL SHOPS
ROOMS

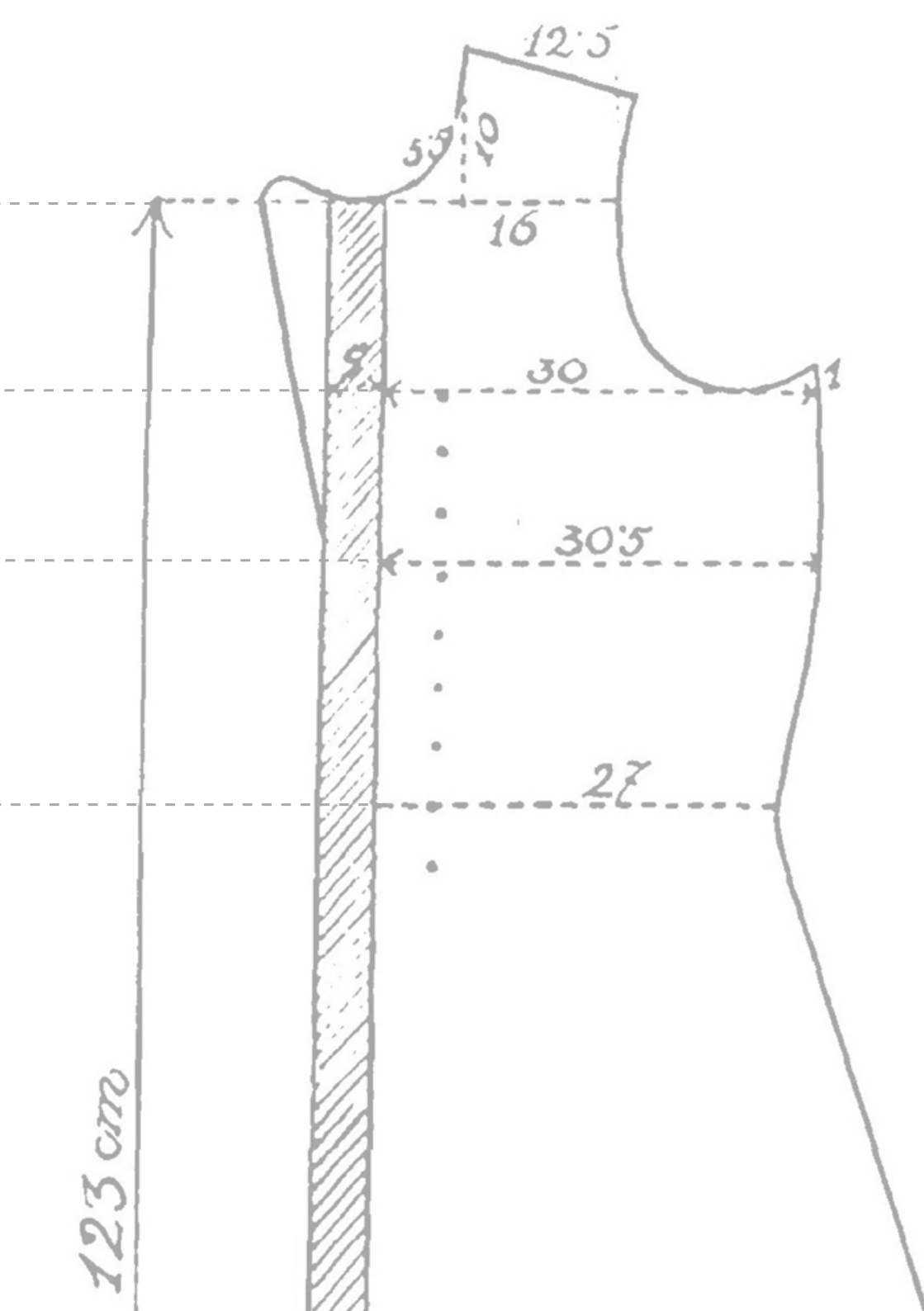
WET & DRY AREAS

BATHROOMS
KITCHENS
RESTAURANTS
HOTELS
GYMS

#NOTJUSTFLOORING

FURNITURE
WALL COVERING
RUGS
WORKTOPS

TAILOR-MADE SOLUTIONS





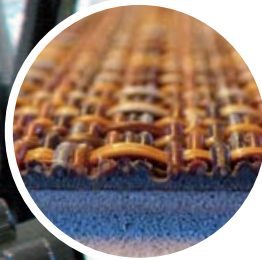




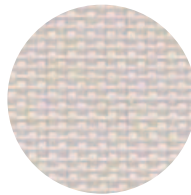


Woven combines the craftsmanship and creativity of the past with the possibilities offered by modern technology.

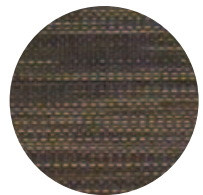
The elasticity and acoustic insulation of its structure give this product great qualities of underfoot comfort.



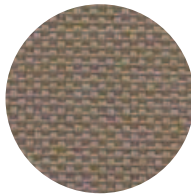
*Woven textile on
waterproof rigid boards*



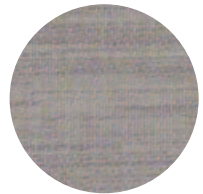
WV4020
Jaggerly



WV5203
Coconut



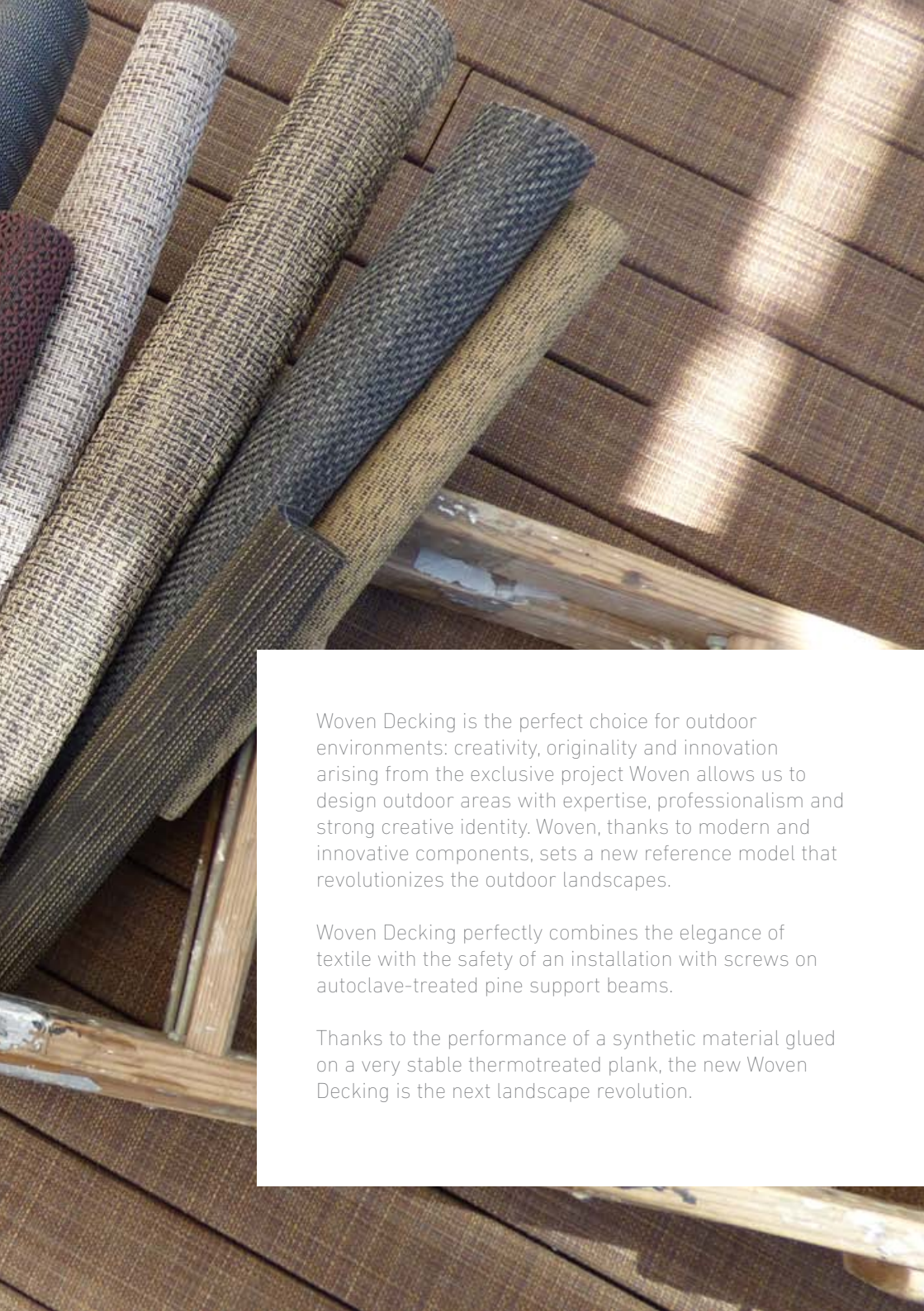
WV4021
Rapadura



WV5202
Panela



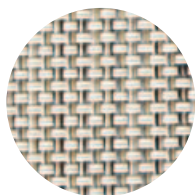
DECKING



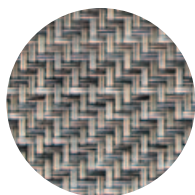
Woven Decking is the perfect choice for outdoor environments: creativity, originality and innovation arising from the exclusive project Woven allows us to design outdoor areas with expertise, professionalism and strong creative identity. Woven, thanks to modern and innovative components, sets a new reference model that revolutionizes the outdoor landscapes.

Woven Decking perfectly combines the elegance of textile with the safety of an installation with screws on autoclave-treated pine support beams.

Thanks to the performance of a synthetic material glued on a very stable thermotreated plank, the new Woven Decking is the next landscape revolution.



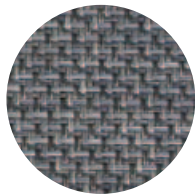
WV4008
Bold Beige



WV4006
Tranquility



WV4007
Spice



WV4010
Reflection

ADVANTAGES



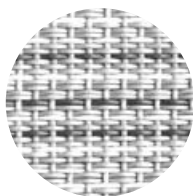


Waterproof
Little care and maintenance needed
Easy to clean
Heat and UV-ray resistant
Crushproof
Long lasting
Pathogens resistant

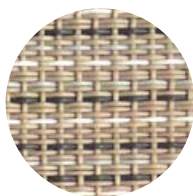




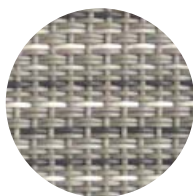
ORIGINALITY AND COLOUR DIVERSITY FOR OUTDOORS



WV4017
White Stitch



WV4018
Ecru Hem



WV4019
Grey Stitch

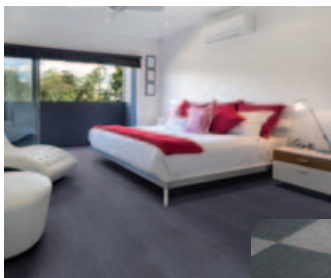
#NOTJUSTFLOORING

Rugs, furniture, wall covering, accessories...

Different applications and solutions with the same textile.







< WV4003 - Calm Blue
Loose Lay 500 x 500 mm.
Sunshine hotel.
Chicago (US).



WV4006 - Tranquility. >
WV4010 - Reflection.
Loose Lay. 500 x 500 mm.
Private apartment.
Lyon (France)

v WV5205 - Charcoal.
WV5202 - Panela.
500 x 500 mm.
Showroom & Academy Floover
El Prat (Spain)



< WV4004 - Diamond cut grey
Splash 915 x 305 mm.
Hotel Av. Sofia.
Sitges (Spain).



WV4018 Ecru Hem >
Decking 2000 x 98 x 22 mm
Private villa.
Sorrento (Italy)



WV4010 - Reflection ^
Decking 2000 x 98 x 22 mm
Decking.
Private house.
Basel (Switzerland)



The sketch shows a large irregular polygon representing a building footprint. On the left, a vertical dashed line is marked with '22' at the top and '25.5' at the bottom. Inside the polygon, horizontal dashed lines are labeled '18', '21.5', '18', and '21'. A small triangle at the bottom right of the polygon is labeled '4'. To the right of the main polygon, a rectangular area is shown with a dashed line labeled '10' at the top, '17' at the bottom, and '5' on the left. The word 'POL.' is written below the '5'. A horizontal line separates the contact information from the factory information.

HEADQUARTERS

C/ Selva, 4 2nd Floor
08820 El Prat de Llobregat · Barcelona (Spain)
T. +34 938 913 310
info@floover.com

FACTORY

Palü Daint
CH-7537 Müstair (Switzerland)
T. +41 818 503 944



TYL

