



Kirill Rozhkov

Dark Water

DESIGN SPOT by

ege[®]

we create more than carpets



Dark Water – Design Spot by ege

Dark Water is the extraordinary result of giving an upcoming Russian graphic designer free rein to create carpet designs with nothing else than his pen and imagination. Without digital tools. And with complete freedom of design. A back to basics idea developing into a collection of highly advanced carpet designs with an impressive level of details. The result is dramatic, striking and different from any other standard design ege has ever produced. The perfect receipt for a Design Spot collection.

Kirill Rozhkov, the designer

The Dark Water designs are inspired by the magical world and creatures found deep underwater. My imagination guided me as I hand sketched the four designs. A forgotten technique in this new digital world. It was a fantastic process to dive into the details of the motives and deliver true designs from within. I hope these undersea creatures will inspire to think differently. Let the designs capture the rooms to bring unique interiors and expressions to life.

Dark Water is a part of the unique Design Spot concept, where ege continually presents collections based on great interest of the moment, fashion, trends, art or culture. Dark Water is an artistic manifestation from the Russian underground. Born to amaze and to inspire. Please dive with Kirill Rozhkov into the Dark Water to explore the world underneath.





Dark Water

RF52952475 Hafgufa

w: 390.0 cm x l: 390.0 cm

K5295



RF52952476 Chauliodus Sloani

w: 390.0 cm x l: 319.4 cm

K5295



RF52751405 Hafgufa

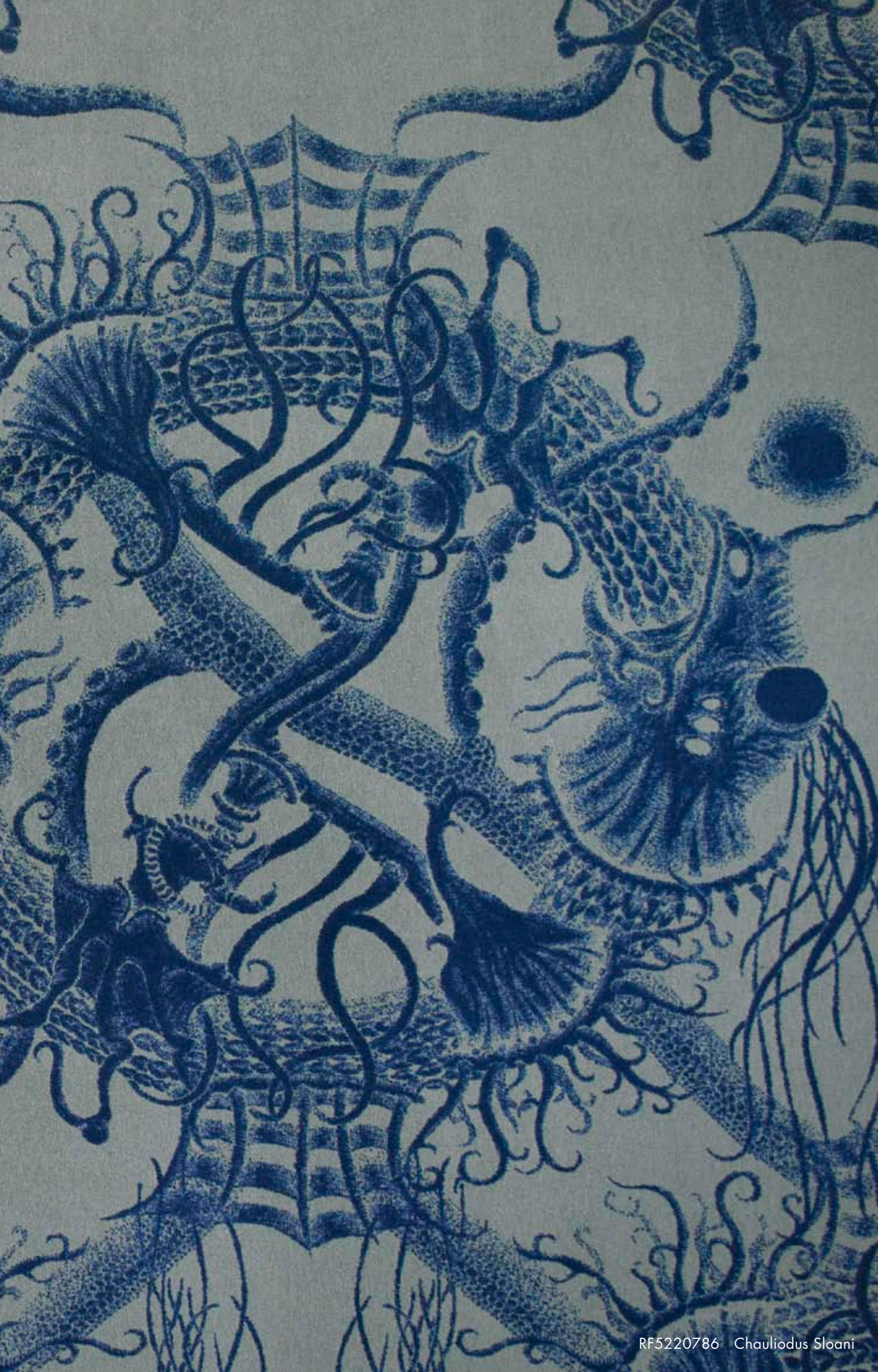
w: 390.0 cm x l: 390.0 cm

K5275









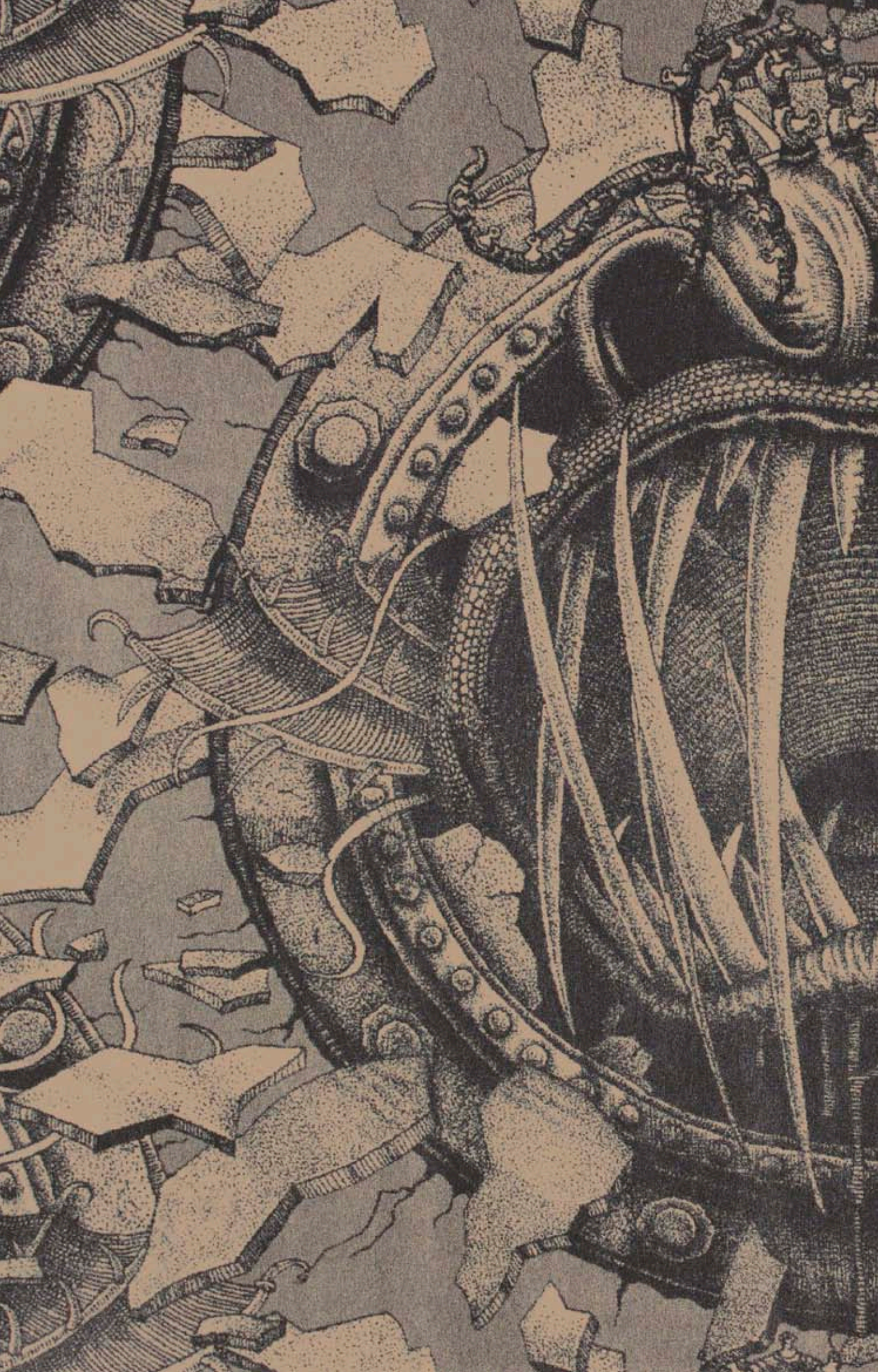


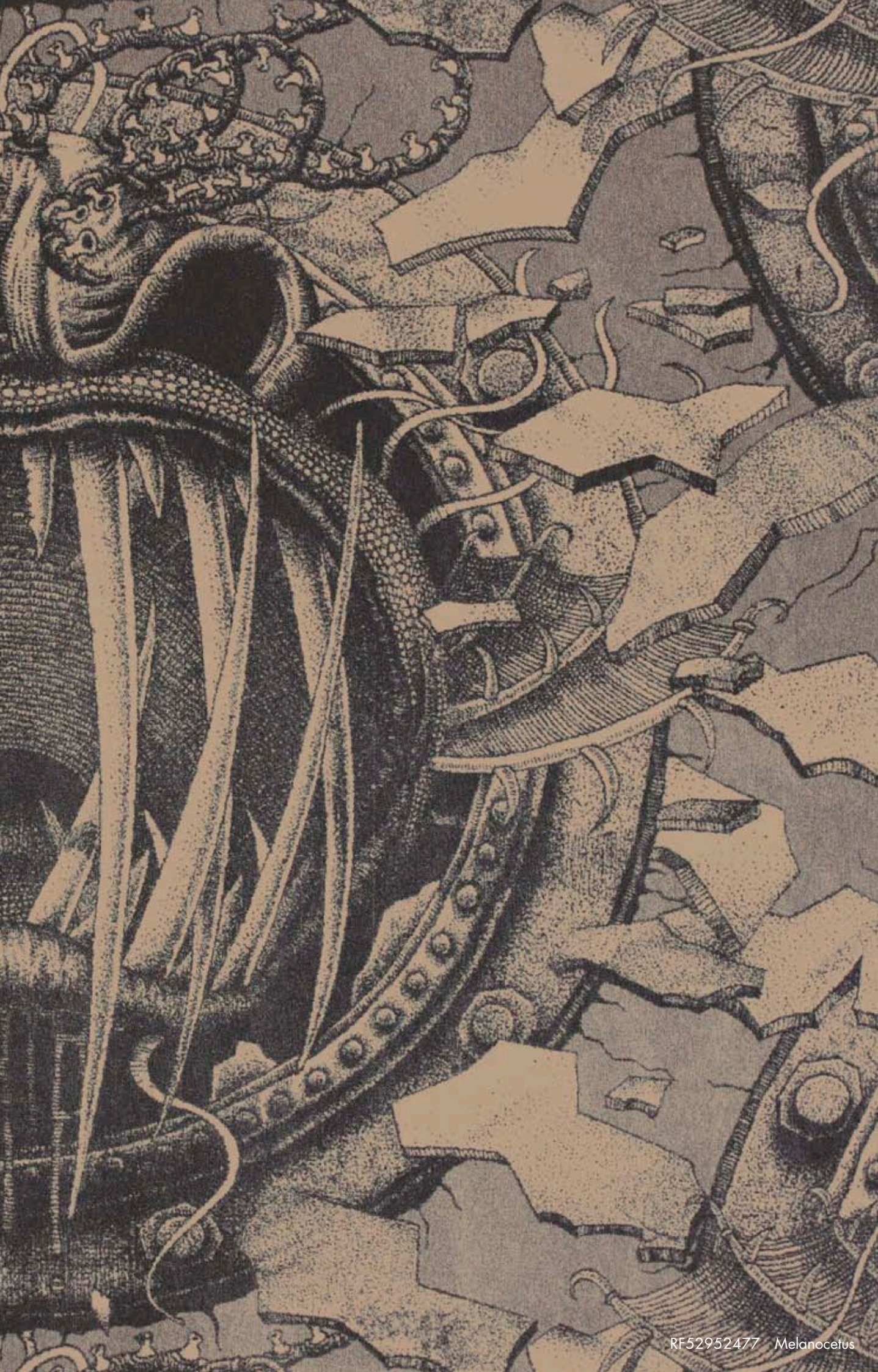
RF5220785 Medusozoa
w: 390.0 cm x l: 317.5 cm

K5220



| | | |
|-----|------|-----|
| C1 | C2 | C3 |
| GB1 | AC53 | GB9 |





Dark Water

RF52952479 *Chauliodus Sloani*

w: 390.0 cm x l: 319.4 cm

K5295



RF52952477 *Melanocetus*

w: 390.0 cm x l: 195.0 cm

K5295



RF5220786 *Chauliodus Sloani*

w: 390.0 cm x l: 319.4 cm

K5220





Colour palettes

Colour palette 5220

| | | | | | | | | | | | |
|-----|--------|-----|--------|-----|--------|------|--------|------|--------|------|--------|
| GB1 | A20041 | GB2 | A20042 | GB3 | A20043 | GB4 | K20044 | GB5 | K20045 | GB6 | K20046 |
| GB7 | K20047 | GB8 | K20048 | GB9 | K20049 | GB10 | K20050 | GB11 | K20051 | GB12 | K20012 |

Accent Colours - for use in areas of max. 10x10 cm

| | | | | | | | | | | | | | | | | | |
|------|------|------|------|------|------|------|------|------|------|------|------|------|------|------|------|------|------|
| AC43 | AC44 | AC45 | AC46 | AC47 | AC48 | AC49 | AC50 | AC51 | AC52 | AC53 | AC54 | AC55 | AC56 | AC57 | AC58 | AC59 | AC60 |
| AC61 | AC62 | AC63 | AC64 | AC65 | AC66 | AC67 | AC68 | AC69 | AC70 | AC71 | AC72 | AC73 | AC74 | AC75 | AC76 | AC77 | |

Colour palette 5275

| | | | | | | | | | | | |
|-----|--------|-----|--------|-----|--------|------|--------|------|--------|------|--------|
| GB1 | K28328 | GB2 | K28329 | GB3 | K28378 | GB4 | K28374 | GB5 | K28366 | GB6 | K28364 |
| GB7 | K28380 | GB8 | K28379 | GB9 | K27886 | GB10 | K28360 | GB11 | K28367 | GB12 | K28368 |

Accent Colours - for use in areas of max. 10x10 cm

| | | | | | | | | | | | | | | | | | |
|------|------|------|------|------|------|------|------|------|------|------|------|------|------|------|------|------|------|
| AC13 | AC14 | AC15 | AC16 | AC17 | AC18 | AC19 | AC20 | AC21 | AC22 | AC23 | AC24 | AC25 | AC26 | AC27 | AC28 | AC29 | AC30 |
| AC31 | AC32 | AC33 | AC34 | AC35 | AC36 | AC37 | AC38 | AC39 | AC40 | AC41 | AC42 | AC43 | AC44 | AC45 | AC46 | AC47 | |

Colour palette 5285

| | | | | | | | | | | | |
|-----|--------|-----|--------|-----|--------|------|--------|------|--------|------|--------|
| GB1 | K28521 | GB2 | K28522 | GB3 | K28523 | GB4 | K28524 | GB5 | K28525 | GB6 | K28526 |
| GB7 | K28527 | GB8 | K28528 | GB9 | K28529 | GB10 | K28530 | GB11 | K28531 | GB12 | K20012 |

Accent Colours - for use in areas of max. 10x10 cm

| | | | | | | | | | | | | | | | | | |
|------|------|------|------|------|------|------|------|------|------|------|------|------|------|------|------|------|------|
| AC13 | AC14 | AC15 | AC16 | AC17 | AC18 | AC19 | AC20 | AC21 | AC22 | AC23 | AC24 | AC25 | AC26 | AC27 | AC28 | AC29 | AC30 |
| AC31 | AC32 | AC33 | AC34 | AC35 | AC36 | AC37 | AC38 | AC39 | AC40 | AC41 | AC42 | AC43 | AC44 | AC45 | AC46 | AC47 | |

Colour palette 5295

| | | | | | | | | | | | |
|-----|--------|-----|--------|-----|--------|------|--------|------|--------|------|--------|
| GB1 | K28601 | GB2 | K28602 | GB3 | K28603 | GB4 | K20012 | GB5 | K28605 | GB6 | K28606 |
| GB7 | K28607 | GB8 | K28608 | GB9 | K28609 | GB10 | K28610 | GB11 | K28611 | GB12 | K28632 |

Accent Colours - for use in areas of max. 10x10 cm

| | | | | | | | | | | | | | | | | | |
|------|------|------|------|------|------|------|------|------|------|------|------|------|------|------|------|------|------|
| AC13 | AC14 | AC15 | AC16 | AC17 | AC18 | AC19 | AC20 | AC21 | AC22 | AC23 | AC24 | AC25 | AC26 | AC27 | AC28 | AC29 | AC30 |
| AC31 | AC32 | AC33 | AC34 | AC35 | AC36 | AC37 | AC38 | AC39 | AC40 | AC41 | AC42 | AC43 | AC44 | AC45 | AC46 | AC47 | |

Dark Water

4 striking broadloom designs in dark and dim colour shades

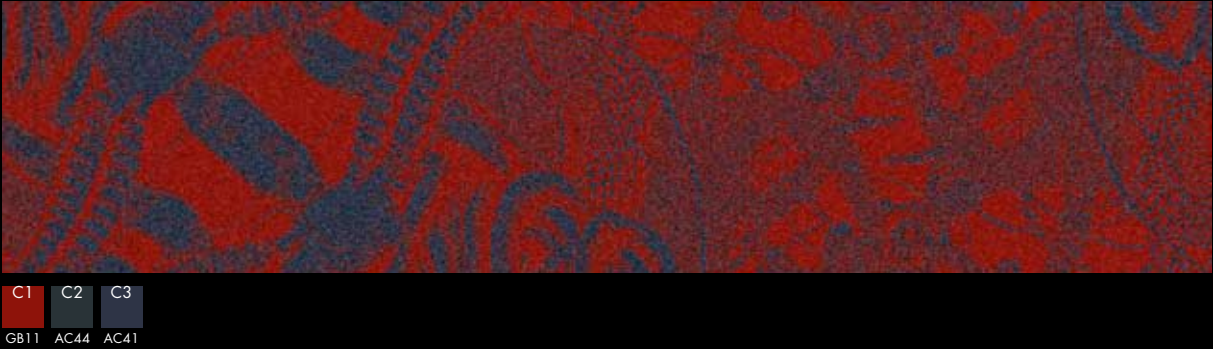
- Recolour options
- No minimum order requirements
- Qualities from Highline 750 – Highline 1400 g/m²
- Undisputed performance standard, EN 1307
- Use classifications to fit any need; extra heavy use
- 2-5 days sample service
- Dispatch within 2 weeks from receipt of order

Recolour

Select design



Change colour of background



Change pattern colour





we create more than carpets

Colours are approximations only

SUBSIDIARIES:

Denmark

France

Germany

Norway

Sweden

United Kingdom

United Arab Emirates

AGENTS/DISTRIBUTORS:

Australia

Iran

Pakistan

Austria

Ireland

Poland

Bahrain

Italy

Portugal

Belgium

Japan

P.R. China - Shanghai

Bosnia - Herzegovina

Jordan

Qatar

Bulgaria

Kenya

Romania

Canada

Kuwait

Russia

Croatia

Latvia

Saudi Arabia

Cyprus

Lebanon

Serbia

Czech Republic

Lithuania

Singapore

Estonia

Luxembourg

Slovakia

Finland

Macau

Slovenia

Greece

Malta

South Africa

Hungary

Montenegro

Spain

Hong Kong

Netherlands

Switzerland

Iceland

New Zealand

Turkey

India

Oman

Ukraine

ege inhouse 1010 - 8048214 - 1st edition

For further contact information please visit
www.egecarpet.com