



**BORMA WACHS®**

# Wood Professional Cosmetics



**Interiors**

For decades Borma Wachs has been involved in the wood-care and synthetic surface treatment, with sense of responsibility and constant commitment to follow three fundamental principles Quality, Flexibility, Reliability. Our company profile is characterised by dynamism in production capacity as merchantability and safety of our products.

As specialists in the wood professional cosmetic field, we aim to offer our costumers only the best.



#### **IBR**

Borma Wachs products are tested and approved by the Institute for Green Building in Rosenheim. The analyses performed certify our products are compliant in terms of VOC content, biocides, heavy metals, and radioactive materials, guaranteeing full eco-compatibility with Green Building principles. The company has always tried to understand the needs and the sensibility of customers, demanding sustainable and eco-sustainable treatments, deriving from renewable sources of raw materials, aiming to minimise impact on the environment and on the health of operators and people who live in the homes.



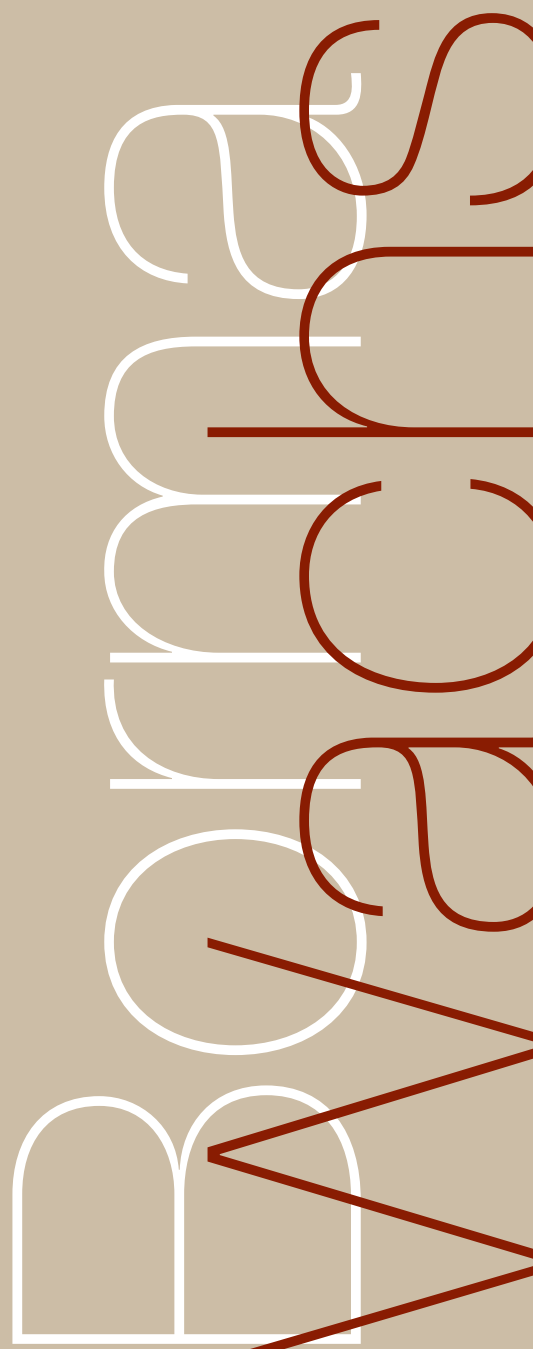
#### **EN71-III**

Eurofins Danish laboratories have recognised conformity of Borma Wachs oils with standard EN 71-III, relating to the migration of harmful heavy metals, guaranteeing the safety of the treatments in such a way that they can also be safe for use on finishes or repair of children's toys.



#### **VOC FREE**

All Borma Wachs products respect European standards relating to solvent vapour emissions, which are potentially dangerous, in the atmosphere, in total respect for the environment and the workers' health. With the new ECO PREMIUM – VOC FREE line, we are able to offer a new and uncompromising range, with 100% natural and biodegradable products, with a VOC content reduced to zero.





# INDEX

**Page 2/5**

PREPARATION AND COLORING

**Page 6/13**

BASECOATS AND TOPCOATS  
FOR PARQUET

**Page 14/17**

CLEANING AND MAINTENANCE  
FOR PARQUET

**Page 18/21**

BASECOATS AND TOPCOATS  
FOR FURNITURE

**Page 22/25**

CLEANING AND MAINTENANCE  
FOR FURNITURE

**Page 26/27**

TECHNICAL ACCESSORIES

**Page 28/31**

Borma Color System



**BORMA WACHS®**  
Wood Professional Cosmetics





## PREPARATION AND COLORING

The colour of the parquet or of furniture represent the core of the finish and establish its character. The aging vehicles, reacting with the tannin, enhance the structure of the wood to the maximum, giving a unique and strongly characterized appearance, to be protected with oils for high impact effects. The positive stains, on the contrary, provide soft and uniform tones, emphasizing the grain without excessive contrasts and perfectly match with the waxed finishes. The universal dyes are distinguished by their exceptional brightness and quick drying and are recognized as ideal for traditional furniture. The oils, semi-transparent and easy to spread, are dedicated to the coloring of large areas, even in the case of timbers that are typically difficult to dye. They deeply impregnate the wood giving a first important protection and, containing mineral pigments, are naturally resistant to light.



# PREPARATION AND COLORING



## Aging vehicle

### ECO HOLZ ANTIX 2008

This waterbased colourless reacting vehicle is used on wood with high content of tannin to get an immediate aging effect. The intensity of the effect (the darkening of the colour) depends on the natural content of the tannin in the timber. The product is not a dye. It can be tinted by adding the proper Waterbased Mordant Concentrates. If directly overcoated with waterbased products it can react giving poor adhesion and inhomogeneities in the film. We recommend therefore to proceed with the application of products of Parquet Oil range and afterwards, in case, apply a waterbased finish.



#### Recommendations for application:

Apply the product on raw wood using synthetic brushes or sponges or, on wide areas, using a spreader. Suitable also for spraying and industrial lines. A preliminary test is always recommended to verify the result, mainly depending on the kind of wood. The get a lighter effect it's possible to dilute the product in water accordingly.



← LOOK AT THE APPLICATION VIDEO!



Code	Cap.	Pack
3720	1 Lt.	12 pcs.
3721	5 Lt.	02 pcs.
3722	25 Lt.	
3723	120 Lt.	

## Aging vehicle

### ECO HOLZ ANTIX 2010

This orange-coloured waterbased reacting vehicle is used on wood with high content of tannin to get an immediate grey effect. The intensity of the effect, that can vary from light grey to dark grey with bluish shades, depends on the original characteristics of the wood. The product is not a dye. If directly overcoated with waterbased products can give unwanted phenomena. We recommend therefore to proceed with the application of products of Parquet Oil range and afterwards, in case, apply a waterbased finish.



#### Recommendations for application:

Apply the product on raw wood using synthetic brushes or sponges or, on wide areas, using a spreader. Suitable also for spraying and industrial lines. A preliminary test is always recommended to verify the result, mainly depending on the kind of wood. The get a lighter effect it's possible to dilute the product in water accordingly.



← LOOK AT THE APPLICATION VIDEO!



Code	Cap.	Pack
3724	1 Lt	12 pcs.
3725	5 Lt	02 pcs.
3727	25 Lt	

## Whitening vehicle

### ECO HARD WOOD LYE

This waterbased product lightens the colour of raw wood and neutralizes the effect of the two aging vehicles Holz Antix 2008 and Holz Antix 2010, leading the colour back to the original one. To avoid unwanted effects we recommend to overcoat with products from Parquet Oil Range and afterwards, in case, apply a waterbased finish.



#### Recommendations for application:

Apply the product on raw wood or on surfaces that were treated with Holz Antix 2008 or 2010 using synthetic brushes or sponges or, on wide areas, using a spreader. A preliminary test is always recommended to verify the result. Suitable also for oak wood.



Code	Cap.	Pack
0075HW	1Lt	12 pcs.
0076HW	5 Lt	02 pcs.
0077HW	25 Lt	

## Waterbased vehicle for Positive Stains

### ECO TP1050

Waterbased vehicle to be tinted with the Mordant Stain concentrates (CW series) for the preparation of positive stains, for wooden furniture and floorings. It is ideal to strongly enhance the structure of the wood, with a natural and easy vintage effect. Ideal for conifer wood (fir).



#### Recommendations for application:

Apply on raw wood. After the complete drying of the wood, we recommend to protect the surface with a wax finish or oils from the Interior range.



Code	Cap.	Pack
COTP1051	1Lt	12 pcs.
COTP1050	5 Lt	02 pcs.
COTP1050.15	25 Lt	
COTP1050.120		





# PREPARATION AND COLORING

## Concentrate stains WATERBASED MORDANT ACTIVE STAIN CONCENTRATES

Liquid dyes in water solution, special for the staining of raw wood. To be used in combination with Holz Antix 2008 or TP1050 Vehicle for Positive Stains. They provide effects of great transparency and depth. Available in the Colour Chart assortment.



### Recommendations for application:

The concentrates are provided in 100ml packaging. This quantity has to be added to 1l of Holz Antix 2008 or 1l of TP1050 vehicle to get a reactive aging stain or a positive stain. The colour may vary according to the treated surface.



Code	Cap.	Pack
CW2000	100 ml	06 pcs.

## Vintage Reactive Stains Color chart (Holz Antix 2008 + Mordant Concentrates CW)



14/56 ANT Ivory



14/6 ANT Beige



14/9 ANT Silica



14/37 ANT Silk grey



14/12 ANT Olive



14/38 ANT Quarztz



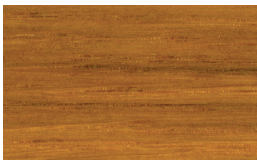
14/10 ANT Stone



14/4 ANT Aged brown



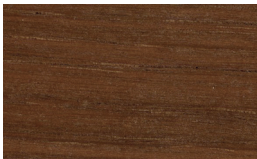
14/2 ANT Aged



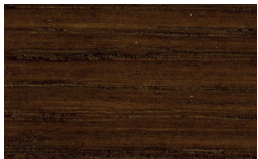
14/14 ANT Cognac



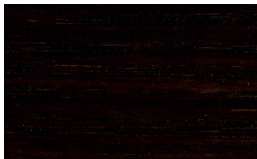
14/1 ANT Natural



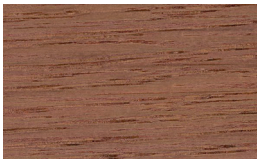
14/46 ANT Dark aged brown



14/21 ANT Dark



14/22 ANT Burnt wood



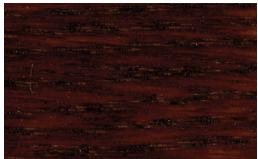
14/13 ANT Aged pink



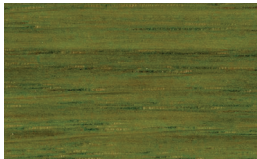
14/44 ANT Rust



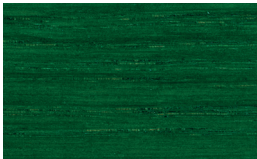
14/47 ANT Dark rust



14/17 ANT Colonial rosewood



14/53 ANT Green



14/57 ANT Emerald





## Oil stain

### GRUNDIEROIL COLOROIL

Blend of natural oils and high quality resins, ready to use, for the preliminary treatment of wooden surfaces. Its fluidity grant an excellent penetration and an ideal dilatation for a uniform and easy base coloring.



#### Recommendations for application:

Available in the clear version and in the colour chart assortment, it can be customized with the tinting system. Suitable for brush, rag, roller and spray applications, we recommend to complete the finishing cycle with the products of the Parquet Range (oils, waterbased or classical lacquers, waxes). Approx. yield: 14-26 m<sup>2</sup>/Lt



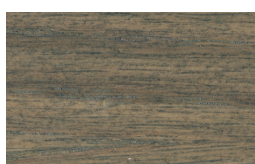
Customizable with Borma Color System



## Grundieroil Color chart



05 Pine



107 Grey oak



52 Dark oak



53 Light walnut



50 Natural white



29 Light cherry



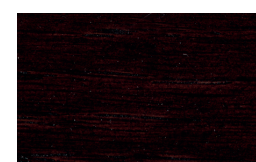
62 Mahogany



63 Dark walnut



59 Medium walnut



58 Rosewood



M8147 Oak rustic



M10098 Black

Transparent for Color System		
Code	Cap.	Pack
3910.750	750 ml	06 pcs.
3950.4	4 Lt.	02 pcs.
3960.8	8 Lt.	02 pcs.
3960.16	16 Lt.	

Code	Cap.	Pack
3910	1L	06 pcs.
3950	5L	02 pcs.
3960	10L	
3960.20	20L	

## Universal Stain concentrate

### HOLZFARBE

It's a universal liquid stain, ideal to stain the raw wood of furniture and other interior surfaces. It replaces the traditional aniline, avoiding the preparation procedure and the inspiration of harmful powders. The product is concentrate and can be used as it is to get very intense colours or can be diluted up to 1:6 ratio with water, alcohol, acetone or nitro thinner to get lighter effects. It gives anyway a result of great depth and brilliance. It can be used also to tint transparent lacquers.



#### Recommendations for application:

Add drop by drop to the clear product to avoid too intense colours. Always make a preliminary test to verify the final effect.



## Holzfarbe Color chart (Available: cherry 30, medium walnut 59, wenge 146)

120 yellow



53 light walnut



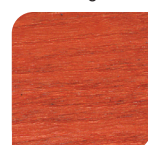
134 green



62 mahogany



122 orange



63 dark walnut



125 fire red



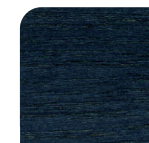
58 rosewood



52 oak



140 blue



17 teak



60 Black



Code	Cap.	Pack
3000	250 ml	12 pcs.
3050	500 ml	12 pcs.
3100	1 Lt	12 pcs.
3005	5 Lt	02 pcs.



A young boy with brown hair, wearing a blue and white plaid shirt and a black flight helmet with goggles, is standing on a wooden floor. He is smiling and looking towards the camera. The background is a wooden floor with a warm, natural finish.

## **BASECOATS AND TOPCOATS FOR PARQUET**

In Parquet Oils world Borma offers a solution to every need: drying times differentiated according to the application conditions, VOC free formulations and natural raw materials and renewable sources dedicated to professionals, always in an ideal balance between ecology and performance. Even in lacquers, the proposals are properly diversified: single-component or catalysed, traditional or water-based, to meet all aesthetic and functional expectations. All finishing products come in multiple gloss variants to create both modern and extremely natural effects as more classic and decorative effects. The specific basecoats allow to obtain the best result optimizing consumption on any type of background.



# BASECOATS AND TOPCOATS FOR PARQUET



## Self sealing oil PARQUET OIL QUICK

Blend of valuable vegetable oils, reinforced with high quality resins, for the finishing of untreated interior wooden surfaces. It provides an excellent resistance to stains and wear. It does not need specific basecoats and it's ready to use. Available in the following gloss levels: deep matt 10% - matt 30% - semiglossy 60% - glossy 90%. Available also in the Hardwax "1030" version, with natural matt effect. Traditional fast drying formulation, low viscosity.



### Recommendations for application:

The product can be applied by brush, roller, rag, spray or industrial lines. Always provide proper ventilation to the treated areas to allow the correct drying process of the oil.  
Approx yield: 12-24 m²/Lt



Customizable with Borma Color System



Parquet Oil Quick		
Code	Cap.	Pack
4951 – XX	1 Lt	06 pcs.
4952 – XX	5 Lt	02 pcs.
4953 – XX	10 Lt	
4954 – XX	20 Lt	

Hardwax Parquet Oil Quick 1030		
Code	Cap.	Pack
4951-HW	1 Lt	06 pcs.
4952-HW	5 Lt	02 pcs.
4953-HW	10 Lt	
4954-HW	20 Lt	

## Self sealing oil PARQUET OIL PLUS

Blend of valuable vegetable oils, reinforced with high quality resins, for the finishing of untreated interior wooden surfaces. It provides an excellent resistance to stains and wear. It does not need specific basecoats and it's ready to use. Available in the following gloss levels: deep matt 10% - matt 30% - semiglossy 60% - glossy 90%. Available also in the Hardwax "1030" version, with natural matt effect. New medium drying formulation, high viscosity. Not flammable for ADR.



### Recommendations for application:

The product can be applied by brush, roller, rag, spray or industrial lines. Always provide proper ventilation to the treated areas to allow the correct drying process of the oil.  
Approx yield: 12-26 m²/Lt



Customizable with Borma Color System



Parquet Oil Plus		
Code	Cap.	Pack
4951 – XX.PLS	1 Lt	06 pcs.
4952 – XX.PLS	5 Lt	02 pcs.
4953 – XX.PLS	10 Lt	
4954 – XX.PLS	20 Lt	

Hardwax Parquet Oil Plus 1030		
Code	Cap.	Pack
4951-HW.PLS	1 Lt	06 pcs.
4952-HW.PLS	5 Lt	02 pcs.
4953-HW.PLS	10 Lt	
4954-HW.PLS	20 Lt	

## Self sealing oil PARQUET OIL PRO

Blend of valuable vegetable oils, reinforced with high quality resins, for the finishing of untreated interior wooden surfaces. It provides an excellent resistance to stains and wear. It does not need specific basecoats and it's ready to use. Natural satin effect. High solid slow drying formulation for the application with rotating buffing machine. Not flammable for ADR.



### Recommendations for application:

The product can be applied by brush, roller, rag, spray, buffing machine or industrial lines. Always provide proper ventilation to the treated areas to allow the correct drying process of the oil.  
Approx yield: 12-26 m²/Lt



Customizable with Borma Color System



Code	Cap.	Pack
4951 – XX.PRO	1 Lt	06 pcs.
4952 – XX.PRO	5 Lt	02 pcs.
4953 – XX.PRO	10 Lt	
4954 – XX.PRO	20 Lt	



# BASECOATS AND TOPCOATS FOR PARQUET

## Self-sealing oil, low yellowing HARDWAX COLOROIL

Based on natural oils, reinforced with high quality resins, for the finishing of wooden floors; specific to keep an extremely neutral tone. It can be used also for doors, skirtings and other wooden items. Interior use.

**White:** especially formulated to provide an intense white colour to the wooden surfaces, keeping a natural finish. Based on resin-reinforced oils and light-resistant pigments, it has a slow oxidative process and it's ideal for white finishings.

**Transparent:** especially developed for the final protection of Hardwax Coloroil White. Slow-oxidating, it provides an excellent natural finishings, keeping the original colour of the basecoat.

Available also in the Quick version, fast drying, special for manual applications.



### Recommendations for application:

Hardwax Coloroil white can be applied by roller or by brush for covering finishes or can be ragged off for decapé finishes. For the final protection we recommend Hardwax Coloroil Transparent.

Hardwax Coloroil white		
Code	Cap.	Pack
4992B.1	1 Lt	06 pcs.
4992B.5	5 Lt	02 pcs.
4992B.10	10 Lt	
4992B.20	20 Lt	

Hardwax Coloroil white quick		
Code	Cap.	Pack
4992B.1QK	1 Lt.	06 pcs.
4992B.5QK	5 Lt.	02 pcs.
4992B.10QK	10 Lt.	
4992B.20QK	20 Lt.	

Hardwax Coloroil transparent		
Code	Cap.	Pack
4992.1	1 Lt	06 pcs.
4992.5	5 Lt	02 pcs.
4992.10	10 Lt	
4992.20	20 Lt	

Hardwax Coloroil transparent quick		
Code	Cap.	Pack
4992.1QK	1 Lt.	06 pcs.
4992.5QK	5 Lt.	02 pcs.
4992.10QK	10 Lt.	
4992.20QK	20 Lt.	

## Two-components oil PARQUET OIL 2K - HARDWAX PARQUET OIL 2K

It's a VOC free, high performing blend of oils. Its special formulation makes it suitable for the catalysis, that reduces drying times and increases the resistance on the surface. When completely dried, the product forms a thin film, with a natural touch, deeply nourishing and protecting the wood. Available also in waxy version, HARDWAX PARQUET OIL 2K.

For professional use.



### Recommendations for application:

Application by buffing machine, with catalysis at 10% or 30% ratio, depending on the traffic on the surface, if medium or high.



Customizable with Borma Color System

Catalyst	
Code	Cap.
4951K	100 ml
4952K	250 ml
4953K	500 ml
4954K	1 Lt
4955K	2 Lt

Hardwax Parquet Oil 2K		
Code	Cap.	Pack
49512K-HW	1 Lt.	06 pcs.
49522K-HW	2,5 Lt.	02 pcs.
49532K-HW	5 Lt.	02 pcs.
49542K-HW	10 Lt.	
49552K-HW	20 Lt.	

Parquet Oil 2K		
Code	Cap.	Pack
49512K	1 Lt.	06 pcs.
49522K	2,5 Lt.	02 pcs.
49532K	5 Lt.	02 pcs.
49542K	10 Lt.	
49552K	20 Lt.	

## Self-sealing oil, VOC free ECO PREMIUM PARQUET OIL HIGH SOLID – ECO PREMIUM PARQUET OIL

VOC free, ecological oil, ideal for the treatment of wooden floors, raw or stained.

Available also in the Finishing-Restoring version (Eco Premium Parquet Oil HS). It can be colored on request with Coloroil System or according to Grundieroil Colourchart.



### Recommendations for application:

Specific for the treatment of wide areas, application by buffing machine is suggested. Specific for the treatment of wide areas, application by buffing machine is suggested.

Approx yield: Eco Premium Parquet Oil HS: 16-24m²/Lt

Approx yield: Eco Premium Parquet Oil: 12-16m²/Lt



Customizable with Borma Color System

Eco Premium Parquet Oil HS		
Code	Cap.	Pack
VOC4951 HS	1 Lt	06 pcs.
VOC4952 HS	5 Lt	02 pcs.
VOC4953 HS	10 Lt	
VOC4954 HS	20 Lt	

Eco Premium Parquet Oil		
Code	Cap.	Pack
VOC4951	1 Lt	06 pcs.
VOC4952	5 Lt	02 pcs.
VOC4953	10 Lt	
VOC4954	20 Lt	





## Insulating basecoat for exotic woods

### NATURAQUA WOOD SEALER

Acrylic transparent insulator for interior and exterior use, ideal for oily woods and as fixing finish for "natural effect". It creates an invisible film for a "raw wood" effect. Fields of application:

It can be used as insulator to grant the correct adhesion of waterbased finishes on exotic or oily woods

It can be used as surface fixative for invisible finishes



#### Recommendations for application:

Catalyze the product with Borma 4100-2K at 10% ratio to improve the adhesion and the surface resistance

Approx yield: 10-14m<sup>2</sup>/Lt



Customizable with Borma Color System



Catalyst 4100-2K		
Code	Cap.	Pack
NAT4102-2K	100 ml	12 pcs.
NAT4101-2K	500 ml	12 pcs.
NAT4103-2K	2,5 Lt	02 pcs.

Code	Cap.	Pack
NAT4090	750 ml	06 pcs.
NAT4091	5 Lt	02 pcs.
NAT4090.10	10 Lt	
NAT4090.20	20 Lt	

## Anti-tannin insulator

### NATURAQUA SUPER WOOD SEALER

Waterbased insulator specific as anti-tannin barrier. It prevents tannin from rising to the surface and allows following waterbased finishes, avoiding unwanted yellow or brown spots.



#### Recommendations for application:

Available in transparent and covering white, ideal for finishes in light colours.

When applied in two coats, it does not require any further basecoats before the topcoat.

Approx yield: 10-14m<sup>2</sup>/Lt



Customizable with Borma Color System



WHITE		
Code	Cap.	Pack
NAT4090B-S	750 ml	06 pcs.
NAT4091B-S	5 Lt	02 pcs.
NAT4090.10B-S	10 Lt	
NAT4090.20B-S	20 Lt	

TRANSPARENT		
Code	Cap.	Pack
NAT4090-S	750 ml	06 pcs.
NAT4091-S	5 Lt	02 pcs.
NAT4090.10-S	10 Lt	
NAT4090.20-S	20 Lt	

## 1-2K WATERBASED BASECOAT FOR PARQUET

Waterbased basecoat for the treatment of wooden floors. Ready to use, it can be applied directly on raw wood. Its special viscosity and workability allow the preparation of parquet floors before the application of the finish Naturaqua Parkettlack.



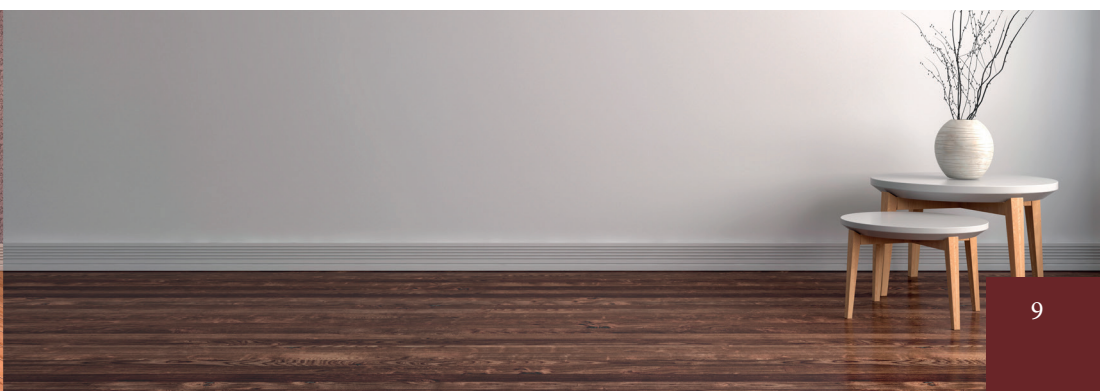
#### Recommendations for application:

If a higher hardness is needed, the product can be catalyzed in ratio 10:1 with 4100-2K hardener for waterbased lacquers.

Approx yield: 10-14m<sup>2</sup>/Lt



Code	Cap.	Pack
NAT4140	1 Lt	06 pcs.
NAT4141	5 Lt	02 pcs.
NAT4142	10 Lt	
NAT4143	20 Lt	





# BASECOATS AND TOPCOATS FOR PARQUET

## Waterbased lacquer for parquet 1-2K NATURAQUA PARKETTLACK

Waterbased high resistance lacquer, eco-friendly, for the treatment of parquet. It can be used as single component or catalyzed with 4100-2K in ratio 10:1. It respects environment and workers' health. It grants high levels of protection against wear and abrasion on traditional wooden floors, pre-sanded or to be restored. High performances with the comfort of a single component or catalyzed technology. Available: 0-5 deep matt/ 10-20 deep matt/30-40 matt/ 50-60 semiglossy/80-90 glossy



### Recommendations for application:

The product can be applied by brush or roller directly on sanded raw wood or on the Waterbased Basecoat. Naturaqua Parkettlack can be applied also on oil-based basecoats or finishes from Borma range.

Approx yield: 10-14m²/Lt



Catalyst 4100-2K		
Code	Cap.	Pack
NAT4102-2K	100 ml	12 pcs.
NAT4100-2K	250 ml	12 pcs.
NAT4101-2K	500 ml	12 pcs.
NAT4103-2K	2,5 Lt	02 pcs.

Code	Cap.	Pack
NAT4100	750 ml	06 pcs.
NAT4101-XX	2,5 Lt	02 pcs.
NAT4102	5 Lt	02 pcs.
NAT4103	10 Lt	
NAT4104	20 Lt	

## Two components high performance Lacquer 2K NATURAQUA PARKETTLACK

Water-based lacquer ideal for the treatment of wooden floors. It develops excellent levels of protection and mechanical resistance, in terms of wear, abrasion and stain resistance. Suitable for all types of wood, it does not necessarily require a specific primer.



### Recommendations for application:

To be used in combination with the specific catalyst in a 10: 1 ratio. For the gloss version 80-90 gloss the catalyst is different and specific.

Approx yield: 10-12m²/Lt



Catalyst for glossy 80-90 GLOSS		
Code	Cap.	Pack
NAT4107-2K-90	100 ml	12 pcs.
NAT4111-2K	250 ml	12 pcs.
NAT4108-2K-90	500 ml	12 pcs.
NAT4109-2K-90	1 Lt	02 pcs.

Catalyst 4100-2K		
Code	Cap.	Pack
NAT4102-2K	100 ml	12 pcs.
NAT4100-2K	250 ml	12 pcs.
NAT4101-2K	500 ml	12 pcs.
NAT4103-2K	2,5 Lt	02 pcs.

Code	Cap.	Pack
NAT41002K-XX	1 L t	06 pcs.
NAT41012K-XX	2,5 L t	02 pcs.
NAT41022K-XX	5 Lt	02 pcs.
NAT41032K-XX	10 Lt	
NAT41042K-XX	20 Lt	

## CATALYST FOR WATERBASED LACQUERS 41002K

Hardener for waterbased lacquer of Borma Range, like Wood sealer, Super wood sealer, Waterbased basecoat for parquet and furniture, Naturaqua Parkettlack 1 or 2K, Naturaqua Mobilack. It increases the level of chemical and mechanical resistance and adhesion power to the background.



### Recommendations for application:

Mix to the base product in ratio 10:1. After the catalysis, dilute with water if necessary. For professional use.



Code	Cap.	Pack
NAT4102-2K	100 ml	12 pcs.
NAT4101-2K	500 ml	12 pcs.
NAT4103-2K	2,5 Lt	02 pcs.

## Single component lacquer for parquet – easy application 1K- PU EASY PARKETTLACK

It's a PU-based lacquer, single component and ready to use, special as self sealing treatment for any wooden floor, quick and easy to use. Fast drying, it's suitable and easy to apply also in industrial lines.



### Recommendations for application:

To increase the coverage of the coating, it's possible even if not compulsory, to apply the 2K PU Parkettlack Basecoat as preliminary phase.



Code	Cap.	Pack
4160-XX.PU	1 Lt	06 pcs.
4161-XX.PU	5 Lt	02 pcs.
4164-XX.PU	10 Lt	

## Moisture-curing lacquer for parquet

### PARKETTLACK

It's a single component, moisture-curing polyurethane lacquer, extremely hard, formulated for the stable protection of wooden floors. Thanks to its professional quality, it creates a film of excellent hardness to grant resistance to scratches and wear. Moisture-curing, fast drying. It needs low maintenance, it has high resistance also to grease and detergents.

Available: 30% matt/ 50% semiglossy/ 90% glossy.



#### Recommendations for application:

Recommended application in two coats with intermediate sanding.  
Approx yield: 10-14m<sup>2</sup>/Lt



Code	Cap.	Pack
4100 XX	1 Lt	06 pcs.
4102 XX	5 Lt	02 pcs.
4103 XX	10 Lt	
4104 XX	20 Lt	

## Two components high performing basecoat

### 2K-PU PARKETTLACK BASECOAT

Polyurethane two components high solid basecoat for wooden floorings. Easy to apply, it's especially formulated as preliminary coating for 2K-PU Parkettlack, two components PU finish. Fast drying, it's easy to sand and grants an excellent coverage of the surface.



#### Recommendations for application:

Catalysis 1:1. The product has to be diluted with DPU011 at 10-20%.  
Approx yield: 10-14m<sup>2</sup>/Lt



#### KIT Basecoat Parkettlack 2k-PU

Code	Cap.	Cap.	Pack
41452K	Fondo 2K Parketlack Pu Kit 0,5 Lt. + 0,5 Lt A+B	1 Lt	06 pcs.
41462K	Fondo 2K Parketlack Pu Kit 1 Lt. + 1 Lt A+B	2 Lt.	06 pcs.
41472K	Fondo 2K Parketlack Pu Kit 2,5 Lt. + 2,5 Lt A+B	5 Lt.	

#### Catalyst Basecoat Parkettlack 2k-PU

Code	Cap.	Pack
4135K	500 ml	06 pcs.
4136K	1 Lt.	06 pcs.
4137K	2,5 Lt.	02 pcs.
4138K	5 Lt.	02 pcs.
4139K	20 Lt.	

#### Basecoat Parkettlack 2K-PU

Code	Cap.	Pack
4135-2K	500 ml	06 pcs.
4136-2K	1 Lt.	02 pcs.
4137-2K	2,5 Lt.	
4138-2K	5 Lt.	
4139-2K	20 Lt.	

## Two components high performing lacquer

### 2K-PU PARKETTLACK

High solid two components polyurethane finish for wooden floorings. Easy to apply and with wide open time, it's formulated to grant great workability and spreadability, even with high temperatures, offering the best protection level.



#### Recommendations for application:

Catalysis 1:1. The product has to be diluted with DPU011 at 10-20%. To be used with 2k PU Parkettlack basecoat, even in one single coat.  
Approx yield: 10-14m<sup>2</sup>/Lt



#### KIT Parkettlack 2k-PU

Code	Cap.	Cap.	Pack
41402K-XX	2K Parketlack Pu Kit 0,5 Lt. + 0,5 Lt A+B	1 Lt	06 pcs.
41412K-XX	2K Parketlack Pu Kit 1 Lt. + 1 Lt A+B	2 Lt.	06 pcs.
41422K-XX	2K Parketlack Pu Kit 2,5 Lt. + 2,5 Lt A+B	5 Lt.	

#### Catalyst Parkettlack 2k-PU

Code	Cap.	Pack
4115-2K	500 ml	06 pcs.
4107-2K	1 Lt.	06 pcs.
4107,2,5-2K	2,5 Lt.	02 pcs.
4108-2K	5 Lt.	02 pcs.
4110-2K	20 Lt.	

#### Parkettlack 2K-PU

Code	Cap.	Pack
4115-2K-XX	500 ml	06 pcs.
4100-2K-XX	1 Lt.	06 pcs.
4101-2K-XX	2,5 Lt.	02 pcs.
4102-2K-XX	5 Lt.	02 pcs.
4104-2K-XX	20 Lt.	

## Two components high performing lacquer – Anti scratch, natural matt effect

### ULTRAMAX MATT 2K

Two components lacquer for parquet, granting the maximum opacity and scratch-resistance, avoiding polishing-effects that are usual in matt finishes. Ideal for any surface that are exposed to wear. Catalysis ratio: 100:20.



#### Recommendations for application:

It can be applied by spray or roller after proper dilution. Approx yield: 10-14m<sup>2</sup>/Lt



Code	Cap.	Pack
41002K + 4100K	1 Lt+ 200 ml	0 6 pcs.
41022K + 4102K	5 Lt + 1 Lt	0 2 pcs.



# BASECOATS AND TOPCOATS FOR PARQUET

## Tabelle comparative:

	OILS					
	CLASSIC			ECO PREMIUM		
CHARACTERISTICS	Parquet oil Quick	Parquet oil PLUS	Parquet oil PRO	Eco premium Parquet Oil	Eco premium Parquet oil HS	Parquet Oil 2k
Formulation	Based on natural oils and waxes, reinforced with resins	Based on natural oils and waxes, reinforced with resins	Based on natural oils and waxes, reinforced with resins	Based on natural oil, waxes and resins	Based on natural oil, waxes and resins	Based on natural oil, waxes and resins
Drying time	6-8 h	9-12 h	12-16 h	24-48h	24-48h	24-48h
Available gloss levels	10, 30, 60, 90	10, 30, 60, 90	Natural effect	Natural effect	Natural effect	Natural effect
Hardwax version availability	Yes	Yes	Yes	No	No	Si
Manual application (brush, rag, roller)	Possible	Possible	Possible	Not recommended	Not recommended	Not recommended
Buffing machine application	Not recommended	Not recommended	Possible	Necessary	Necessary	Necessary
Industrial application (oil coating machine)	Possible	Possible	Possible	Possible	Possible	Possible
Hardness and resistance	**	**	**	*	*	***
Solid content	43-48%	43-48%	60%	55%	70%	100%
Aromatics content	<2%	Aromatic free	Aromatic free	Aromatic free	Aromatic free	Aromatic free
Flammability - ADR	Flammable for ADR	Not flammable (no ADR)	Not flammable (no ADR)	Not flammable (no ADR)	Not flammable (no ADR)	Not flammable (no ADR)
VOC content	505,7 g/l (434 g/l hardwax version)	505,7 g/l (434 g/l hardwax version)	355,2 g/l	VOC free	VOC free	VOC free
VOC category	A/f = 700 g/l	A/f = 700 g/l	A/f = 700 g/l	A/f = 700 g/l	A/f = 700 g/l	A/f = 700 g/l



## VARNISHES

### CLASSIC

### Naturaqua

CHARACTERISTICS	Easy parkettlack PU	Parkettlack	Parkettlack 2k	Ultramax matt 2k scratch free	Naturaqua Parkettlack	Naturaqua Parkettlack + Catalyst	Naturaqua Parkettlack 2k
<b>Formulation</b>	Polyurethane	Moisture-curing polyurethane	two components polyurethane	two components acrylic polyurethane	Acrylic polyurethane dispersion	Acrylic polyurethane dispersion + crosslinker	Polyurethane dispersion
<b>Drying time (to sand)</b>	4-6 h	4-6 h	24/36 h	1/2 h	4-6 h	4-6 h	2-4 h
<b>Available gloss levels</b>	10-30-60-90	30, 60, 90	30, 60, 90	Matt 0-5 gloss	0-5, 10-20, 30-40, 50-60, 80-90	0-5, 10-20, 30-40, 50-60, 80-90	10-20, 30-40, 50-60,
<b>Manual application (brush, roller)</b>	yes	yes	yes	yes	yes	yes	yes
<b>Spray application</b>	yes	yes	yes	yes	yes	yes	yes
<b>Hardness and resistance</b>	x	xx	xx	xxx	x	xx	xxx
<b>Solid content</b>	45	46	45	25%	30-32%	34-36%	38-40%
<b>Catalysis ratio</b>	/	/	1:1	10:2	/	10:1	10:1
<b>Flammability - ADR</b>	yes	yes	yes	yes	no	no	no
<b>VOC Content</b>	471g/l	492 g/l	500 g/l	714 g/l	41 g/l	41 g/l	30 g/l
<b>VOC Category</b>	A/i=500g/l	A/i=500g/l	A/j=500g/l	A/j=500g/l	A/i= 140	A/j=140	A/j=140



## CLEANING AND MAINTENANCE FOR PARQUET

Parquet care means cleaning with suitable, effective but non-aggressive products that cleanse without compromising the original finish. Hence the pH neutral soaps, also suitable for oiled parquet.

The waxes add further protection, preserve the surfaces from wear and enhance their beauty. Natural or self-polishing, they are aimed at both the private user and the professional.





# CLEANING AND MAINTENANCE FOR PARQUET



## Traditional wax polish REBUFFABLE BEESWAX FOR PARQUET (solid/liquid)

Special polishing wax for parquet, based on pure bees and carnauba waxes. Ideal for the natural finishing of surfaces treated with oil. Silicon-free. It nourishes and easily protects all wood surfaces, giving a pleasant and soft veil with antistatic properties.



**Recommendations for application:**  
The rebuffable beeswax for parquet, pigmented with stable colors and resistant to light, is ideal for the restoration of antique parquet and special effects. Approx yield: 30-40m<sup>2</sup>/Lt



Code	Cap.	Pack
4960	5L solida	02 pcs.
0690	1L liquida	12 pcs.
0692	5L liquida	02 pcs.

## Daily detergent PARQUET CLEANER

Waterbased detergent made with natural soap, with neutral pH, for the cleaning of varnished or oil treated wooden floors. Pleasantly perfumed, it removes dirt and grease, not damaging the varnish coat, cleaning efficiently but gently at the same time.



**Recommendations for application:**  
Dilute in water for the daily cleaning or use as it is for local intervention on small areas. Available also in the white version for light-coloured or white floorings



Code	Cap.	Pack
NAT0048	1 Lt	12 pcs.
NAT0049	5 Lt	02 pcs.
NAT0050	25 Lt	

Code	Cap.	Pack
NAT0048BI	1 Lt	12 pcs.
NAT0049BI	5 Lt	02 pcs.
NAT0050BI	25 Lt	

## Waterbased liquid wax Polish PARQUET WAX

It is a solvent-free wax emulsion, designed for the protection and renewal of parquet, damaged by wear. Its composition of natural waxes with surfactants provides a pleasant shine and resistance to frequent traffic. Ideal for protecting oil treated and lacquered parquet floors.



**Recommendations for application:**  
Apply evenly and avoid overlapping. Wait for the complete drying. Available in the classic glossy and in the matt version, natural effect. Approx yield: 60-70m<sup>2</sup>/Lt



Satin		
Code	Cap.	Pack
0490	1 Lt	12 pcs.
0491	5 Lt	02 pcs.

Natural effect		
Code	Cap.	Pack
0490-30	1 Lt	12 pcs.
0491-30	5 Lt	02 pcs.





# CLEANING AND MAINTENANCE FOR PARQUET



## Cleaning and maintenance KIT PARQUET 1

Parquet Cleaner + Parquet Wax.  
Ideal for oiled and lacquered parquet floors.



Code	Cap.
4885	1 Lt + 1 Lt

## Cleaning and maintenance KIT PARQUET 2

Parquet Cleaner + Rebuffable beeswax for parquet  
Ideal for oiled and lacquered parquet floors.



Code	Cap.
4886	1 Lt + 1 Lt

## Daily detergent LAMINATE CLEANER

Pleasantly perfumed , it removes dirt and grease respecting the surface. Ideal for everyday use.



### Recommendations for application:

Dilute in water for the daily cleaning or use as it is for local intervention on small areas.  
Approx yield: 60-70m²/Lt



Code	Cap.	Pack
NAT0057	1 Lt	12 pcs.
NAT0058	5 Lt	02 pcs.

## Waterbased liquid wax polish LAMINATE REVIVER

Special self-polishing waxy reviving agent to revitalize laminate supports, damaged by wear and frequent foot traffic. Water soluble, formaldehyde free, almostodorless.



### Recommendations for application:

Apply evenly and avoid overlapping. Wait for the complete drying.



Code	Cap.	Pack
3366	1 Lt	12 pcs.
3367	5 Lt	02 pcs.



easy  
to clean





## **BASECOATS AND TOPCOATS FOR FURNITURE**

Even in the furniture field proposals, the proposals are splitted in oil based products, water based or traditional, to meet every aesthetic and application needs. Different gloss versions and the various possible technologies make up an ideal range, so that the professional user can finish furniture at his best. Special attention should be paid to surfaces intended for contact with food; specific certified oils are presented for this type of use. Even the sauna treatment finds dedicated products for finishing and maintenance.





# BASECOATS AND TOPCOATS FOR FURNITURE



## Oil for furniture

### HARD FURNITURE OIL – HARDWAX FURNITURE OIL

Based on natural oils and enriched with high quality resins and waxes, Hard Furniture Oil gives a good resistance to stain and scratch, with a pleasant natural satin effect. Suitable to protect rough or dyed wood with a delicate amber toning. Available in 10-30-6-90 gloss and also in the natural opaque waxy version.



#### Recommendations for application:

Applicable by brush, rag, roller or spray. For a particularly nice and natural effect, it is advisable to remove excess with a soft cloth. Allow to dry completely before using the treated object. Approx yield: 12-24m<sup>2</sup>/Lt



Hard Furniture Oil		
Code	Cap.	Pack
4902-XX	1 Lt	06 pcs.
4903-XX	5 Lt	02 pcs.
4902.10-XX	10 Lt	
4904-XX	20 Lt	

Hardwax Furniture Oil		
Code	Cap.	Pack
4907	1 Lt	06 pcs.
4908	5 Lt	02 pcs.
4914	10 Lt	
4909	20 Lt	

## Oil for kitchen tops

### HARD TOP OIL AND HARD TOP OIL NATURAL 6020

Based on natural oils and enriched with high quality resins and waxes, Hard Top Oil provides excellent protection with a pleasant natural effect. Suitable for tables and kitchen tops in general, as well as chopping boards and wooden kitchen tools, it is certified for food contact according to EN71.3, DIN 53160 and DIN68861 standards. Also available in waxy version with natural opaque effect (Natural 6020).



#### Recommendations for application:

Applicable by brush, rag, roller or spray. For a very accurate effect it is advisable to remove the excess with a soft cloth. Allow to dry completely before using the treated object. The chopping boards and in general the articles of frequent use can be washed with water and neutral soap; they will be subject to maintenance proportional to the frequency of use.

Approx yield: 14-26m<sup>2</sup>/Lt



Hard Top Oil		
Code	Cap.	Pack
4916	750 ml.	06 pcs.
4917	5 Lt.	02 pcs.
4916.10	10 Lt.	
4916.20	20 Lt.	

Hard Top Oil Natural 6020		
Code	Cap.	Pack
4916N	750 ml.	06 pcs.
4917N	5 Lt.	02 pcs.
4916.10N	10 Lt.	
4916.20N	20 Lt.	

## Oil for kitchen tools

### KITCHENWARE OIL

VOC-free oil, made with substances of natural origin, ideal for the treatment of objects in raw wood or previously treated with oil, made to come in constant contact with food, such as chopping boards, plates, salad bowls, spoons, etc. Kitchenware Oil makes the surface repellent to water and dirt. Certified in accordance to EN71-III, exempt of harmful substances.



#### Recommendations for application:

Apply one or two coats with a brush or rag, or even by dipping, and remove the excess product with a soft cloth. Reapply if necessary, as frequently as requested by the type of use and washing. Approx yield: 8-12m<sup>2</sup>/Lt



Code	Cap.	Pack
4989.025	250 ml	12 pcs.
4989.05	500 ml	12 pcs.
4989.1	1 Lt.	06 pcs.
4989.5	5 Lt.	02 pcs.
4989.20	20 Lt	

# BASECOATS AND TOPCOATS FOR FURNITURE

## Protective treatment for sauna SAUNA OIL

Blend of oils for the treatment and maintenance of the internal surfaces of the saunas (benches, claddings and floors in raw wood). Provides a good water repellency and protects the wood from dehydration, naturally revitalizing the color and the grain.



### Recommendations for application:

Sauna Oil is applied to untreated wood, dry and clean, with a rag and without excess, whenever necessary. Approx yield: 8-16m²/Lt



Code	Cap.	Pack
3940	500 ml	12 pcs.
3941	1 Lt	12 pcs.
3942	5 Lt	02 pcs.

## Waxy protective finish for sauna NATURAQUA BORMA SAUNA WACHS

Water based treatment, formulated with high quality waxes and resins, specific for the protection of all the internal surfaces of the saunas (benches, panels, floors, ceilings). Transparent, it does not alter the wood tone, giving a pleasant natural effect and protecting from dirt and water. Colorable, it is available in the trendy white, grey and black colors. Thanks to its low viscosity and vapor permeability, the product is absorbed deeply into the wood and maintains a natural and silky feel on the surface.



### Recommendations for application:

The product is also suitable for use on exterior coatings. In this case, overcoating with Naturaqua Top Gel is recommended to increase the durability of the finish. Approx yield: 10-12m²/Lt



Code	Cap.	Pack
NAT3361	750 ml	06 pcs.
NAT3362	2,5 Lt.	02 pcs.
NAT3363	5 Lt.	
NAT3365	20 Lt.	



08 Transparent



50 White



9002 Grey



60 Black

## Waterbased basecoat 1-2K WATERBASED BASECOAT FOR FURNITURE

Transparent water-based varnish for varnishing all types of interior wood. Special as preliminary treatment with Naturaqua Mobilack. Excellent transparency and elasticity, thanks to its consistency it is easy to apply by brush even on vertical surfaces. Ideal for furniture, doors, skirting boards, claddings.



### Recommendations for application:

Ready for use as a single component product, it can also be catalyzed by adding the Borma 4100-2K catalyst for water-based paints, in a 10: 1 ratio. Approx yield: 10-12m²/Lt



Catalyst 4100-2K			Code	Cap.	Pack
Code	Cap.	Pack	NAT4126	1 Lt	06 pcs.
NAT4102-2K	100 ml	12 pcs.	NAT4127	5 Lt	02 pcs.
NAT4101-2K	500 ml	12 pcs.	NAT4128	10 Lt	
NAT4103-2K	2,5 Lt	02 pcs.	NAT4129	20 Lt	

## Waterbased lacquer for furniture MOBILACK

Eco-compatible finish for the treatment of furniture. It respects the environment and workers' health, thanks to its water base is almost VOC free. Mobilack develops very high levels of protection against wear and abrasion of traditional wooden surfaces, already sanded or restored. High performance with the ease of use of a single-component/ catalyzed technology.



### Recommendations for application:

Can be used as a single-component product or can be catalyzed with the Catalyst 4100-2K in lacquer ratio: catalyst = 10: 1. Approx yield: 10-12m²/Lt



Catalyst 4100-2K			Code	Cap.	Pack
Code	Cap.	Pack	NAT4122	1 Lt	06 pcs.
NAT4102-2K	100 ml	12 pcs.	NAT4123	5 Lt	02 pcs.
NAT4101-2K	500 ml	12 pcs.	NAT4124	10 Lt	
NAT4103-2K	2,5 Lt	02 pcs.	NAT4125	20 Lt	



## Waterbased lacquer for furniture 1-2K INVISIBLE TOUCH

It is a water-based paint with an "invisible" effect. It gives a matt appearance and does not alter the natural look of the raw wood, giving a good level of surface protection.



### Recommendations for application:

Apply preferably by spraying after catalysis with NAT4100-2K, catalyst for water-based paints and 10% dilution in water. Approx yield: 10-12m<sup>2</sup>/Lt



Catalyst 4100-2K		
Code	Cap.	Pack
NAT4102-2K	100 ml	12 pcs.
NAT4101-2K	500 ml	12 pcs.
NAT4103-2K	2,5 Lt	02 pcs.

Code	Cap.	Pack
NAT4130	1 Lt	06 pcs.
NAT4131	5 Lt	02 pcs.
NAT4132	10 Lt	
NAT4133	20 Lt	

## Traditional lacquer for furniture MOBILACK

Polyurethane lacquer for furniture, easy to use, suitable as a self sealer also for doors, skirting boards and other interior surfaces. Fast drying.



### Recommendations for application:

Ready to use, to obtain a greater impregnation capacity, the product can be diluted up to 30% with Solvoil 03, 04 or 06 depending on the needs. Approx yield: 12-24m<sup>2</sup>/Lt



Code	Cap.	Pack
4122-XX	750 ml	06 pcs.
4123-XX	2,5 Lt	02 pcs.
4124-XX	5 Lt	02 pcs.
4125-XX	20 Lt	

## Traditional basecoat BASECOAT GEL

Basecoat Gel is a fast drying, single-component, transparent product with excellent adhesion power. It is ideal as a first coat before painting or wax finishes.



### Recommendations for application:

The product is in gel and ready to use, easy to apply even on vertical surfaces avoiding dripping. Thanks to the quick drying it gives excellent results even if diluted. Approx yield: 12-14m<sup>2</sup>/Lt



Code	Cap.	Pack
0650	250 ml	12 pcs.
0652	750 ml	06 pcs.
0655	5 Lt	02 pcs.

## Traditional lacquer NC LACK

Nitro cellulose gel paint, low yellowing, easy to sand once dried. Its consistency prevents dripping and makes it ideal for vertical surfaces.



### Recommendations for application:

Used in furniture restoration, it is also an excellent fixative for stains. Approx yield: 10-12m<sup>2</sup>/Lt



Code	Cap.	Pack
0620	250 ml	12 pcs.
0621	750 ml	06 pcs.
0622	5 Lt	02 pcs.



## **CLEANING AND MAINTENANCE FOR FURNITURE**

The products for cleaning and protection, for daily or periodic use, more than a complement can become a real completion of the finish, extending its life and enhancing its value. The intensive detergents, suitable for any type of paint, help in extraordinary cleaning operations, while the water-based soap is dedicated to regular use even on delicate surfaces. Also among different waxes and oils are the options depending on the type of original finish and the general conditions of application.







# CLEANING AND MAINTENANCE FOR FURNITURE

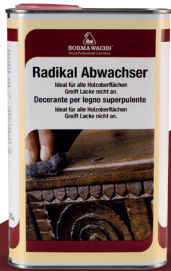


## Intensive wax remover for wood RADIKAL ABWACHSER

Ideal product for the total cleaning of all wooden surfaces. With speed and absolute effectiveness it attacks the old layers of wax removing from wood dirt and incrustations without damages for the underlying lacquers.



**Recommendations for application:**  
Apply with a cloth and if necessary rub with steel wool 000 or 0000. Wipe with a clean cloth to remove any residuals.



Code	Cap.	Pack
0042	250 ml	12 pcs.
0043	500 ml	12 pcs.
0044	1L	12 pcs.
0045	5L	02 pcs.
0046	Spray 400 ml	12 pcs.

## Intensive detergent FURNITURE CLEANER – MOEBELREINIGER

Special blend for intensive cleaning of painted furniture. It effectively removes dirt, stains, graying and fading due to moisture, giving surfaces a new shine. It does not damage the original finish.



**Recommendations for application:**  
Apply with a soft cloth, rub with circular movements and allow to dry. The product leaves no residue.



Code	Cap.	Pack
0015	250 ml	12 pcs.
0016	500 ml	12 pcs.
0017	1L	12 pcs.
0018	Spray 400 ml	

## Daily waterbased detergent FURNITURE NEUTRAL DETERGENT

Waterbased, with neutral soap and orange essential oil, it is ideal for the daily care of furniture. Suitable for all indoor surfaces, lacquered, painted or treated with oil, gently cleanses and respects the original finishes, leaving a fresh scent.



**Recommendations for application:**  
Apply with a soft cloth and wipe with circular movements. Wipe again with a dry cloth to polish the surface.



Code	Cap.	Pack
NAT0060	500 ml	12 pcs.
NAT0061	1 Lt	12 pcs.
NAT0061.5	5 Lt	02 pcs.
NAT0061.25	25 Lt	



# CLEANING AND MAINTENANCE FOR FURNITURE

## Daily care

### FURNITURE CREAMY WAX POLISH – MOBILCERA

Waxy cream for furniture, gives new shine to dull surfaces. It sanitizes and polishes, protecting from dust and moisture.



#### Recommendations for application:

Apply small quantities with a soft cloth and rewind until completely absorbed.



Code	Cap.	Pack
0400	250 ml	06 pcs.
0401	500 ml	02 pcs.
0402	1 Lt	02 pcs.

## Periodic care

### WACHS&OELPFLEGE

Ideal detergent for cleaning and maintenance of surfaces treated with oil or wax. Ecological, waterbased, it combines natural waxes and precious oils that clean and revitalize the treated surface in a single application.



#### Recommendations for application:

Apply with a soft cloth and wipe again after a few seconds with a clean and dry cloth to remove dust and excess product, polishing the surface.



Code	Cap.	Pack
4061	250 ml	12 pcs.
4062	500 ml	12 pcs.
4063	1 Lt.	12 pcs.
4064	5 Lt.	02 pcs.

## Special for oil-finishes

### INTERIOR OIL REFRESHER

For the extraordinary maintenance of indoor wood, the Interior oil refresher is perfect for the care and restoration of every surface previously treated with Borma oils. Easy to apply, it nourishes the wood and renews the existing protective layer. It gives a pleasantly satin appearance and enhances the natural beauty of wood.



#### Recommendations for application:

Apply with a brush or rag without excess. For normal maintenance, just one coat is sufficient. Allow to dry completely before re-using the surface.



Code	Cap.	Pack
3976	250 ml	12 pcs.
3977	500 ml	12 pcs.
3978	1 Lt	12 pcs.
3978.05	5 Lt	02 pcs.



Customizable with Borma Color System

## Natural reviver

### RESTORING OIL

Special product for furniture maintenance. Precious oils and extenders are part of this formulation with high reviving and protective power for wood and lacquers. Penetrating deeply, it dyes and polishes, hiding scratches and abrasions.

Available colors: light wood, medium wood, dark wood and mahogany.



#### Recommendations for application:

Apply with a cloth and remove any excess with a dry and clean cloth. Not ideal for floors.



08 light wood



59 medium wood



63 dark wood



62 mahogany



Code	Cap.	Pack
0410XX	150 ml	12 pcs.
0420XX	500 ml	12 pcs.
0450XX	1 Lt	12 pcs.
0470XX	5 Lt	02 pcs.

## Bees and carnauba wax – in paste and liquid form

### HOLZWACHS

Based on beeswax and carnauba, it nourishes, regenerates, protects and polishes all types of wood, reviving its natural color. Recommended for interiors and fine furnishings.



#### Recommendations for application:

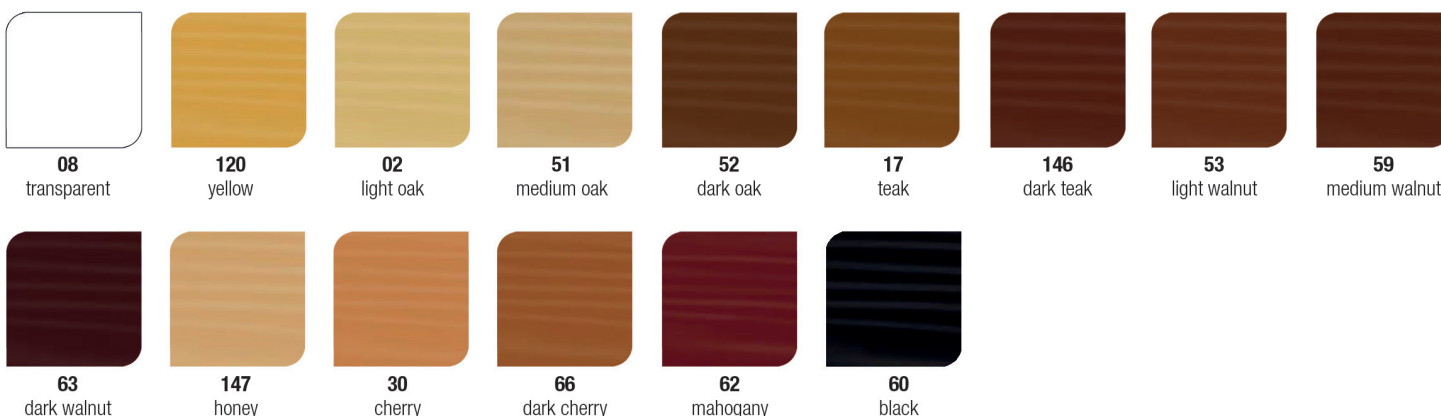
It can be applied on any wooden surface: raw, stained, varnished or with oil finishes. Rebuffable.



Holzwachs Paste		
Code	Cap.	Pack
0120	500 ml	06 pcs.
0150	1 Lt	06 pcs.
0170	5 Lt	02 pcs.
0190	20 Lt	

Holzwachs liquid		
Code	Cap.	Pack
0210	250 ml	12 pcs.
0220	500 ml	12 pcs.
0250	1L	06 pcs.
0270	5L	02 pcs.
0290	20L	
0215	Spray 400 ml	12 pcs.

## Color chart



## Waxy blend for furniture

### WAX OIL 7030

Based on natural waxes and oils, the product combines the ease of application of the paste wax with the resistance of the oil. Colorless, it is used to soften the effects obtained with colored waxes and to give the surfaces higher protection, water repellency and hardness.



#### Recommendations for application:

Spread or brush in thin, uniform layers. Polish with a soft cloth.



Customizable with Borma Color System

Code	Cap.	Pack
2960	750 ml.	06 pcs.
2965	2,5 Lt.	02 pcs.
2965.5	5 Lt.	02 pcs.
2970	10 Lt.	







## TECHNICAL ACCESSORIES

The right complement to the right product. We find here a range of base products and equipment, like thinners, pure vegetable oils and tools, mainly for parquet and furniture oils, for the correct and professional application of the products.



# TECHNICAL ACCESSORIES



Interiors



## Rapid drying

### SOLVOIL 03

#### Special solvent for oils and wax

Especially for balanced dilution of the Borma Wachs oils range. Solvoil 03, thanks to its particularly gradual drying, reduces hardening over time of oils diluted with it.

Code	Cap.	Pack.
4930.03	1 Lt	12 pcs.
4931.03	5 Lt	02 pcs.
4932.03	25 Lt	

## Medium drying

### SOLVOIL 04

#### Special solvent for oils and wax

Especially for balanced dilution of the Borma Wachs oils range. Solvoil 04, thanks to its particularly gradual drying, allows regulation over time of hardening of the oils diluted with it, easing application and penetration in the wood, especially when working with exotic woods.



Code	Cap.	Pack.
4930.04	1 Lt	12 pcs.
4931.04	5 Lt	02 pcs.
4932.04	25 Lt	



## Medium-slow drying

### SOLVOIL 06

#### Special solvent for oils and wax

Especially for balanced dilution of the Borma Wachs oils range. Solvoil 06, thanks to its particularly gradual drying, extends the hardening time oils diluted with it.

Code	Cap.	Pack.
4930.06	1 Lt	12 pcs.
4931.06	5 Lt	02 pcs.
4932.06	25 Lt	

## Aromatic-free

### SOLVOIL PLUS

#### Special solvent for oils and wax

Ideal due to its balanced dilution of the Borma Wachs oils range. Solvoil PLUS, thanks to its particularly gradual drying, regulates the hardening time oils diluted with it. Odour and aromatic compounds-free.



Code	Cap.	Pack.
4930.PL	1 Lt	12 pcs.
4931.PL	5 Lt	02 pcs.
4932.PL	25 Lt	



## HARDENER C00151

### Catalyst for oil

Special drying mixture for oils. Added in 3-6% ratio it reduces the drying time of oils. Recommended for all the oils when applied in difficult conditions, like high humidity, greasy exotic woods, pigmented oils with high coverage (pigments strongly influence the oxidation). Shake well before use then add in the recommended quantity during mixing (see TDS).

Code	Cap.	Pack
01510-1	1 Lt	12 pcs.
01510	5 Lt	02 pcs.

## TUNG OIL - Pure vegetable oil

### Natural oil to protect wood

100% natural oil obtained from the fruit of the Tung tree. It offers good surface hardness and resistance against humidity. With a light amber colour, tung oil is a traditional product to protect wood from atmospheric agents.



Code	Cap.	Pack
3990	150 ml.	12 pcs.
3991	500 ml.	12 pcs.
3992	1 Lt.	12 pcs.

Code	Cap.	Pack
3993	5 Lt.	02 pcs.
3994	25 Lt.	



## RAW LINSEED OIL

Natural oil, special for preparation of oil based pigments. It can be used as basecoat and finish for wood, to get a natural effect. It penetrates deeply into wood pores, giving a bright effect but not glossy. Periodical maintenance is required to keep its beauty. For indoor use only.

Code	Cap.	Pack
3996	150 ml.	12 pcs.
3997	500 ml.	12 pcs.
3998	1 Lt.	12 pcs.

Code	Cap.	Pack
3999	5 Lt.	02 pcs.
4000	25 Lt.	

## BOILED LINSEED OIL

Linseed oil, filtered and boiled with traditional systems. Resin free. Gives a soft and bright finishing on raw or stripped wood. Ideal for the preparation of oil pigments. Base and finishing oil, natural effect. Penetrates in deep and in wood grain.

Code	Cap.	Pack
3980	150 ml.	12 pcs.
3981	500 ml.	12 pcs.
3982	1 Lt.	12 pcs.



Code	Cap.	Pack
3983	5 Lt.	02 pcs.
3985	25 Lt.	



## CAN OPENING SPATULA

Metal spatula to easily open cans and mix products or pastes. The spatula is 28 cm long. The polymer handle ensures a correct grip, while the steel structure makes the spatula resistant to chemical agents and mechanical stress. Ideal for mixing products contained in medium-small packaging.

Code
6448

## OIL APPLICATION BRUSH

Special brushes for the application of oil-based products on interior and exterior floorings. Available dimension: 150mm, 250mm, 380mm.



Code	Misura
6394.380	380mm
6394.250	250mm
6394.150	150mm



**BORMA WACHS®**  
Wood Professional Cosmetics

# COL OR SYS TEM

*Autonomously formulate the colours in an accurate and fast way, choosing from the new Borma collections or the most important international colour charts*



Easily manage your  
colour selections



Create and record the colour recipes  
chosen by your clients



Reproduce, for each treatment  
or finishing product, the desired  
shade based on a sample



Achieve perfect cosmetic touch-ups  
of the colour of your finish

Discover  
Borma ColorSystem



# COLOR SYSTEM



## WATERBASED MORDANT STAIN CONCENTRATES

They are liquid dyes in aqueous solution specific for the coloring of raw wood. They are used in combination with the various water vehicles of the Borma range and in particular with Holz Antix 2008 and TP1050 Vehicle for Positive Stains. They give effects of great transparency and depth.

Available in basic colors: yellow, blue, black, red and white.



### Recommendations for application:

To avoid unwanted staining it is advisable to add the concentrates to the transparent vehicle drop by drop until the correct intensity is obtained. Always carry out a preliminary test to check if the effect corresponds to the expected one.



YELLOW		
Code	Cap.	Pack
CW300	1 Lt.	06 pcs.
CW305	5 Lt.	02 pcs.

BLUE		
Code	Cap.	Pack
CW400	1 Lt.	06 pcs.
CW405	5 Lt.	02 pcs.

BLACK		
Code	Cap.	Pack
CW600	1 Lt.	06 pcs.
CW605	5 Lt.	02 pcs.

RED		
Code	Cap.	Pack
CW800	1 Lt.	06 pcs.
CW805	5 Lt.	02 pcs.

WHITE		
Code	Cap.	Pack
CW500	1 Lt.	06 pcs.
CW505	5 Lt.	02 pcs.

## Waterbased Patina NATURAQUA FAST PATINA

Concentrated Transparent base, colored with water-based mordant concentrates, the waterbased pigments (also metal effect) or with universal dyes. Thanks to its particular formulation, the product can be applied without problems on oiled, PU, acrylic, UV and lacquered surfaces. It is suitable for any type of wooden surface. Very easy application and removal once dried.



### Consigli per l'applicazione:

Apply with a brush, taking care to fill all the cavities of the surface. After drying remove the excess by passing with an abrasive cloth. Alternatively, it is possible to work the wet patina directly until the desired effect is obtained.



Cod.	Cap.	Conf.
NATCD07000.250	250 ml	12 pz.
NATCD07002	1 Lt.	06 pz.
NATCD07002.5	5 Lt.	02 pz.
NATCD07002.25	25 Lt.	

## Fast drying patina FAST PATINA

Transparent Base to be colored with COPU synthetic pigments. Professional product recommended for patina or decapé effects. Very fast drying, it is suitable for any kind of basecoat: polyurethane, acrylic, UV or lacquered.

Available standard in shades: Gold 11, Gold Leaf 11/F, Warm Gold 12, Cold Gold 19, Silver 15, Silver Leaf 15/F, Copper 20, White 50, Black 60.



### Consigli per l'applicazione:

Usually applied by spray, it can be applied also by brush on small surfaces. After a few minutes the patina is dry and can be removed in the wanted areas using an abrasive pad, steel wool or fine sandpaper.

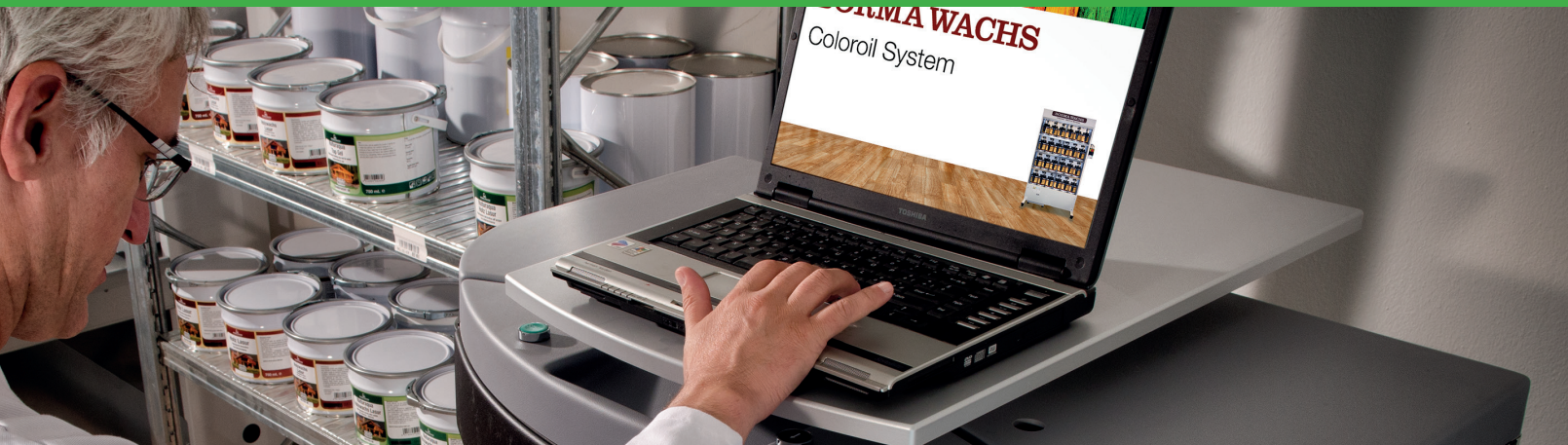
For very accurate finishings a transparent intermediate layer, basecoat or topcoat, is recommended before the application of Patina.



Cod.	Cap.	Conf.
CD07002XX	1 Lt.	06 pz.
CD07002XX.5	5 Lt.	02 pz.
CD07002XX.25	25 Lt.	



# Color solutions for water based products



## WATER BASED PRODUCTS

NAT4090	Naturaqua Wood Sealer
NAT4090-S	Naturaqua Super Wood Sealer
NAT4140	Fondo all'acqua per Parquet
NAT4100	Naturaqua Parkettlack
NAT41002K-XX	Naturaqua Parkettlack 2k
NAT3361	Naturaqua Borma Sauna Wachs
NAT4126	Fondo all'acqua per Mobili
NAT4122	Naturaqua Mobilack



## PIGMENTS ASSIGNABLE TO WATER BASED PRODUCTS

031 white
052 black
813 yellow oxide
515 red oxide
393 yellow oxide transparent
395 red oxide transparent
706 blue
057 green
701 medium yellow S
111 medium yellow
211 lemon yellow S
511 lemon yellow
411 orange
721 violet
821 black T
921 red
331 dark red

## Borma Color System: tools

### MANUAL BORMA COLOR SYSTEM

COMIX12/6	SIRIO MODULAR MANUAL DOSING SYSTEM 12/6 12 positions for 1Lt and 6 positions for 3.5Lt, with 18 mixing lids Mod. Ring.
COMIX24/1	SIRIO MODULAR MANUAL DOSING SYSTEM 24/1 24 positions for 1Lt, with 24 mixing lids Mod. Ring.

### ACCESSORIES FOR THE COLOR SYSTEM

6463	ELECTRONIC SCALE
------	------------------

### 16-CAN BENCH VOLUMETRIC-GRAVIMETRIC ELECTRONIC MIXER

6481.OP	CAN VOLUMETRIC-GRAVIMETRIC ELECTRONIC LABORATORY DOSING SYSTEM (OIL PIGMENT Range)
6481.WB	CAN VOLUMETRIC-GRAVIMETRIC ELECTRONIC LABORATORY DOSING SYSTEM (WATERBORNE PIGMENT Range)

# Color solutions for Borma Classic and Oils products



## BORMA CLASSIC AND OILS PRODUCTS

4951 – XX / 4951– HW	Parquet Oil Quick- Hardwax Parquet Oil Quick
4951 – XX.PLS / 4951-HW .PLS	Parquet Oil Plus – Hardwax Parquet Oil Plus
4951 – XX.PRO /	Parquet Oil Pro
4992.1	Hardwax Coloroil
49512K	Parquet Oil 2K – Hardwax Parquet Oil 2k
VOC4951	Eco Premium Parquet Oil – Eco Premium Parquet Oil High Solid
4902 / 4907	Mobil Oil forte + Mobil Oil ceroso forte
4916	Hard Top Oil



## PIGMENTS ASSIGNABLE TO BORMA CLASSIC AND OILS PRODUCTS

051 white
052 black
593 yellow oxide
015 red oxide
293TR yellow oxide transparent
295TR red oxide transparent
516 blue
527 green
713 light yellow
653 warm yellow
834 orange
416 violet
525 light yellow
915 dark red
135 pink

## AUTOMATIC BORMA COLOR SYSTEM

6480	16-CAN VOLUMETRIC-GRAVIMETRIC ELECTRONIC DOSING SYSTEM	
6480.OP	16-CAN VOLUMETRIC-GRAVIMETRIC ELECTRONIC DOSING SYSTEM	With assortment of oil based pigments
6480.WB	16-CAN VOLUMETRIC-GRAVIMETRIC ELECTRONIC DOSING SYSTEM	With assortment of water based pigments
6460	SPECTROPHOTOMETER Match-color - Colour reading and formulation	Mobile
6461	SPECTROPHOTOMETER Match-color - Colour reading and formulation	Counter

## 32-CAN VOLUMETRIC-GRAVIMETRIC ELECTRONIC DOSING SYSTEM

6482a	CAN VOLUMETRIC-GRAVIMETRIC ELECTRONIC DOSING SYSTEM (OIL and WATERBORNE Pigment Range)
-------	--







**BORMA WACHS®**

Wood Professional Cosmetics

# Wood passion



## Wood Professional Cosmetics



Restoration



Touch-Up



Interiors



Exteriors



Gilding



Decoration

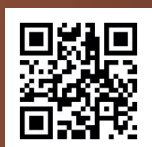
# Waves and Sound





**BORMA WACHS®**

**Discover our products:**



**B.P.S. s.r.l.**

Via Industria, 4  
30029 San Stino di Livenza  
Venezia - Italy  
Tel. +39 0421 951900  
Fax +39 0421 951902

**[www.bormawachs.com](http://www.bormawachs.com)**

Wachs  
Kunststoff  
Beschläge  
für  
Aluminium-  
fenster-  
und  
türen-  
rahmen