

A Textural Selection

ege[®]

THE URGE TO EXPLORE SPACE

4	ReForm Legend
8	ReForm Matrix
12	ReForm Memory
16	Una Crystalline
20	Una Tinta
24	Technical specifications



Feel at home

Most will agree that you get the best travel experience when a distinctive hotel profile is successfully combined with a sprinkling of home comforts. Carpet is a strong vehicle for creating a unique design expression in the lobby, corridor, restaurant or hotel room and nothing beats the luxurious feeling of soft carpet under your feet. In addition, a carpet absorbs much of the sound that hits its surface while also reducing sounds from adjoining rooms and corridors to provide ideal conditions for holidaymakers and business travellers to relax.

A Textural Selection of the ReForm and Una collections brings an elegant and toned down alternative to the Highline custom design concept. ReForm and Una offer a variety of predesigned and easily accessible collections with voluminous three-dimensional textures and high levels of comfort. Produced from regenerated ECONYL® yarns based on used fishing nets and other waste materials, ReForm is your green choice beautifully complemented by Una offering ege carpets' solution dyed and thereby most price attractive collections.



ReForm Legend

The Legend collection is a contemporary and honest interpretation of traditions, folklore and the enchanted wood. Its rich multilevel loop texture reflects the coarse mix of tree bark, twigs, moss and leaves creating a blanket of simple organic patterns. With Legend, you bring the layered, natural structures of the forest floor into

the hospitality sector. The pinpoint details of grey and black space dyed yarns enhance the visual texture and assist soil hiding. Legend is your green carpet choice based on regenerated ECONYL® yarns produced from fishing nets and other waste materials that are collected, cleaned and reborn as hardwearing carpet yarns.

Available as broadloom and tiles, 27 different colours, undisputed performance standard EN 1307 – class 33, performance classification to fit any need; heavy commercial use, Cradle to Cradle Certified™







REFORM LEGEND 0778014



REFORM LEGEND 0778016



ReForm Matrix

The Matrix collection features a three dimensional structure inspired by the combination of vertical and horizontal lines thus creating a matrix. This geometric expression makes your thoughts travel to impressive iron gates with beautiful grids, metallic floors on production sites and materials intertwined into each other.

The look is raw and industrial. Matrix is made in regenerated and regenerable ECONYL® yarns produced from used fishing nets and other waste materials that are reborn as strong and hardwearing carpet yarns.

Available as broadloom and tiles, 27 different colours, undisputed performance standard EN 1307 – class 33, performance classification to fit any need; heavy commercial use, Cradle to Cradle Certified™







REFORM MATRIX 0827245



REFORM MATRIX 0827550



ReForm Memory

There is a natural beauty in timeworn textiles that carries strong memories of time and place. Vintage linen and velvet show their original craft and their imperfections; nuanced colours have sentimental value. The Memory collection acknowledges the importance of looking back, recalling past skills and crafts and re-interpreting

them by using digital manufacturing techniques. The marriage of a complex structured multilevel loop and digital colouration gives the collection a unique expression. Produced in ECONYL® yarns based on used fishing nets and other waste materials Memory is your truly green choice.

Available as broadloom and tiles, 27 different colours, undisputed performance standard EN 1307 – class 33, performance classification to fit any need; heavy commercial use, Cradle to Cradle Certified™

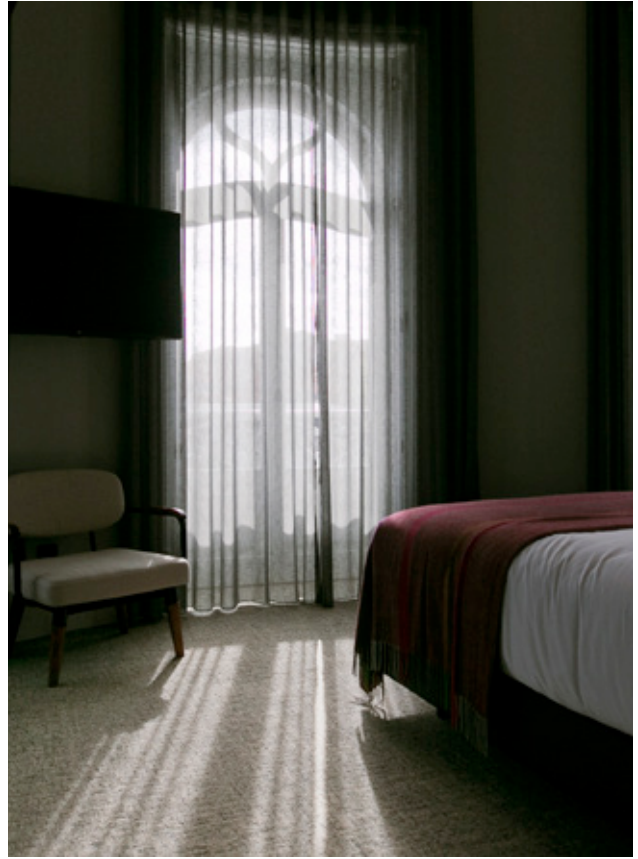




REFORM MEMORY 0768012



REFORM MEMORY 0768013



REFORM MEMORY 0768035

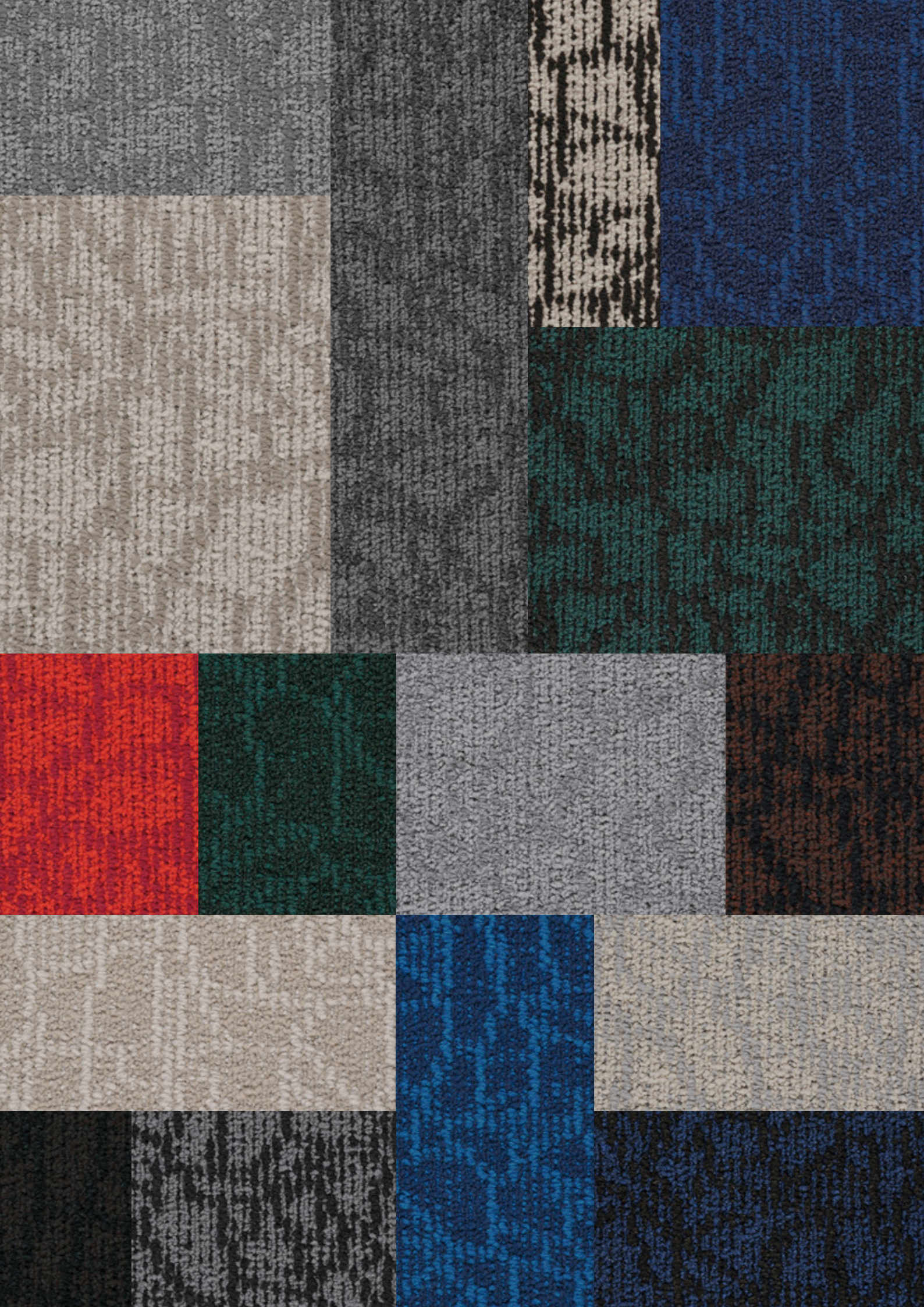


Una Crystalline

Inspired by the crystals' geometric and raw edges, the collection represents natural forces of sharpness and brutality that are elegantly refined by the systematic precision in the shape of this sculptural phenomenon. The regularity of a crystal is truly reflected in the pattern. Crystalline is a multilevel loop collection, being

a high quality yet budget friendly alternative to the ReForm collections. The minimalist and stylish expression is comparable to the look of ReForm and the fact that Crystalline is made from solution dyed yarns reflects in the price and colour selection equally.

Available as broadloom and tiles, 16 different colours, undisputed performance standard EN 1307 – class 33, performance classification to fit any need; heavy commercial use





UNA CRYSTALLINE 0811770



UNA CRYSTALLINE 0811240

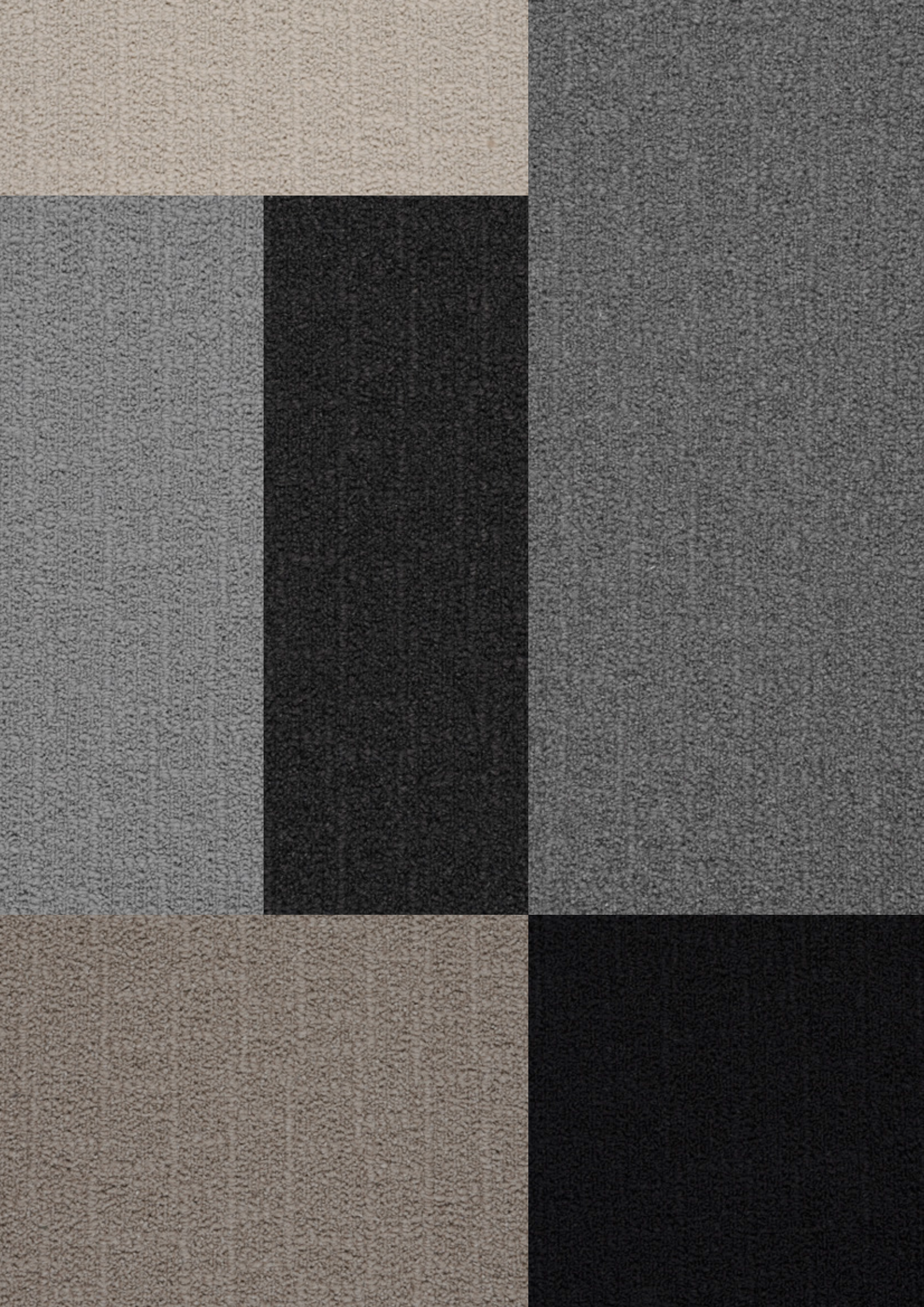


Una Tinta

The Tinta collection adds a compelling tint of elegance to any hospitality flooring. The voluminous and multidimensional structure brings an exciting yet minimalist expression to any interior. Inspired by shadows created from the sun shining through a window with wooden mullions, the geometric pattern is defined by

balanced vertical and horizontal lines. Dwell with the feeling of a tint of daylight changing in colour, intensity and shape through this window grid during the day. Produced in solution dyed yarns Tinta offers a high quality yet budget friendly alternative to the ReForm collections making it ideal for any hospitality project.

Available as broadloom and tiles, 6 different colours, undisputed performance standard EN 1307 – class 33, performance classification to fit any need; heavy commercial use







UNA TINTA 0829750



UNA TINTA 0829770

Construction characteristics	Standard	ReForm Legend WT	
Structure	ISO 2424	Tufted loop pile – structured	
Pile material	DIR 96/73, 96/74	100% regenerated ECONYL® polyamide	
Coloration	-	Millitron dyed	
Backing	eTL	WT – Woven textile	
Dimensions	ISO 3018	Approx. 400 cm	
Gauge	ISO 2424	1/12	
Total thickness	ISO 1765	Approx. 8.0 mm	
Surface pile thickness	ISO 1766	Approx. 4.0 mm	
Tufts	ISO 1763	Approx. 198,000 per m²	
Total carpet weight	ISO 8543	Approx. 2,675 g/m²	
Pile yarn weight	eTL	Approx. 950 g/m²	
Surface pile density	ISO 8543	Approx. 0.150 g/cm³	
Soil protection	eTL	Yes	
Biocidal treatment	Biocidal Product Regulation	-	
Performance characteristics			
Performance areas	EN 1307	Class 33 – Commercial – Heavy	
Castor chair suitability	EN 985	Intensive use	
Suitability for use on stairs	EN 1963	Yes	
Static control	eTL	Permanently antistatic	
Suitability for under floor heating	ISO 8302	Yes	
Acoustical insulation from impact noise	ISO 717-2/eTL	26 dB	
Acoustical absorption	ISO 354/eTL	0.25 aW	
Safety and environmental characteristics			
Fire classifications	EN 13501-1 Euroclass IMO MK Godkendelse VKF/AEAI	C _{fl} -s1 - Approved Approved	
Indoor climate	BASTA DIM Certificate Emissions dans l'air intérieur GECA Green Label Plus	Registered No. 006 - Approved Approved	
Environmental profile	Bre BREEAM-NOR Byggvarudeklaration Cradle to Cradle Certified™ Environmental Product Declaration LEED	- - - Silver certified EPD-EGE-20150316-CCA1-EN Qualified	
CE Labeling	EN 14041	Certified	
Manufacturer characteristics			
Quality management	ISO 9001	Audited and verified by Bureau Veritas Certification	
Environmental management	ISO 14001	Audited and verified by Bureau Veritas Certification	
Eco management	EMAS	Audited and verified by Bureau Veritas Certification	
Occupational Health & Safety	DS/OHSAS 18001	Audited and verified by Bureau Veritas Certification	
Corporate Social Responsibility	DS 49001	Audited and verified by Bureau Veritas Certification	
Carpet Recycling UK	Member	www.carpetrecyclinguk.com	

eTL = internal result from the ege Test Laboratory

Due to continuous development of products and testing procedures any above declaration is subject to change without prior notification

For full technical specifications and installation and maintenance guides see egecarpets.com

	ReForm Matrix WT	ReForm Memory WT	Una Crystalline WT	Una Tinta WT
	Tufted loop pile – structured	Tufted loop pile – structured	Tufted loop pile – structured	Tufted loop pile – structured
	100% regenerated ECONYL® polyamide	100% regenerated ECONYL® polyamide	100% polyamide	100% polyamide
	Millitron dyed	Millitron dyed	Solution dyed	Solution dyed
	WT – Woven textile	WT – Woven textile	WT – Woven textile	WT – Woven textile
	Approx. 400 cm	Approx. 400 cm	Approx. 400 cm	Approx. 400 cm
	1/12	1/12	1/12	1/12
	Approx. 8.0 mm	Approx. 8.0 mm	Approx. 8.0 mm	Approx. 8.0 mm
	Approx. 4.0 mm	Approx. 4.0 mm	Approx. 5.5 mm	Approx. 5.5 mm
	Approx. 198,000 per m²	Approx. 198,000 per m²	Approx. 236,200 per m²	Approx. 236,200 per m²
	Approx. 2,675 g/m²	Approx. 2,675 g/m²	Approx. 2,700 g/m²	Approx. 2,700 g/m²
	Approx. 950 g/m²	Approx. 950 g/m²	Approx. 950 g/m²	Approx. 950 g/m²
	Approx. 0.150 g/cm³	Approx. 0.150 g/cm³	Approx. 0.135 g/cm³	Approx. 0.135 g/cm³
	Yes	Yes	Yes	Yes
	-	-	-	-
	Class 33 – Commercial – Heavy	Class 33 – Commercial – Heavy	Class 33 – Commercial – Heavy	Class 33 – Commercial – Heavy
	Intensive use	Intensive use	Intensive use	Intensive use
	Yes	Yes	Yes	Yes
	Permanently antistatic	Permanently antistatic	Permanently antistatic	Permanently antistatic
	Yes	Yes	Yes	Yes
	26 dB	26 dB	26 dB	26 dB
	0.25 aW	0.25 aW	0.25 aW	0.25 aW
	C _{II} -s1 - Approved Approved	C _{II} -s1 - Approved Approved	B _{II} -s1 - Approved Approved	B _{II} -s1 - Approved Approved
	Registered No. 006 - Approved Approved	Registered No. 006 - Approved Approved	- No. 006 - Approved Approved	- No. 006 - Approved Approved
	- - - Silver certified EPD-EGE-20150316-CCA1-EN -	- - - Silver certified EPD-EGE-20150316-CCA1-EN Qualified	- - - - - -	- - - - - -
	Certified	Certified	Certified	Certified



BY APPOINTMENT TO THE ROYAL DANISH COURT

ege carpets a/s



UNA CRYSTALLINE 0811550



ege[®]

THE URGE TO EXPLORE SPACE

egecarpets.com