



HIMALAYAN HAND-KNOTTED RUG COLLECTION

**jacaranda**  
REFINED



THE WORLD'S MOST BEAUTIFUL AND  
LONG-LIVED RUGS ARE HAND-KNOTTED



#### HIMALAYAN HAND-KNOTTED RUG COLLECTION

Our weavers use traditional Tibetan hand-knotting techniques brought by their parents and grandparents over the Himalayas to Kathmandu. The weavers sit in rows at fixed looms, one or two weavers for a small rug, up to five for the largest. Each weaver works the area in front of them, making individual knots over metal rods, which are then cut to create the pile. The weavers count knots as they go, following by eye and recreating by hand, the design from a graph fixed to the loom above them. It is highly skilled work. Every weaver must knot uniformly with the same yarn tension as their neighbour. They must all weave at the same speed so their rugs grow on average by just 10cm per day.



**Laborious it may be, but Tibetan hand-knotting has important advantages:**

- **Quality.** This is a traditional technique that creates rugs with the structure and density to withstand many years of use. The weavers knot with Chinese silk and New Zealand wool. Also with hand carded, hand spun wool from the high plateaux of Tibet, renowned for its long, strong fibres and naturally high lanolin content which increases the lustre of these rugs with wear
- **Intricacy.** Many of Jacaranda's Himalayan rug designs are very simple by choice, but hand-knotting lends itself to complex designs. The weavers can change colour frequently, or swap between silk and wool
- **Flexibility.** Rugs can be any design, colour, shape or size. You may buy one of Jacaranda's designs from stock, but Jacaranda can make your designs too, or re-create Jacaranda's designs to your colour scheme and dimensions. We can colour match to fabrics, wallpapers, paints, pantones or Chromatone poms
- **Individuality.** At Jacaranda we value the irregularity and slight quirkiness that can only be handmade. Unlike machine made, mass produced rugs, each Jacaranda Himalayan hand-knotted rug will have its own character and charm. And if we make your own design, you will receive a work of art that is truly unique.

**Rugs from stock or bespoke**

Jacaranda now stocks the designs on pages 6 to 22 at 200 x 300cm and 250 x 350cm. These and the designs on pages 23 to 28 can be ordered made to measure. If you wish to create your own design or to customise one of Jacaranda's, the opportunities, choices and order process for Jacaranda's bespoke Himalayan rugs are set out on pages 29 and 30.



Jacaranda is dedicated to promoting ethical production practices. Jacaranda Carpets is a licensee of Goodweave, an international organisation working to end exploitative child labour in the rug industry of South Asia. The organisation employs independent inspectors, who visit participating producers and make random inspections to identify and rescue any children found working illegally. It also funds education and rehabilitation for thousands of the rescued children. For more details please visit [www.goodweave.org.uk](http://www.goodweave.org.uk).



**ARBOREUM** TAKES INSPIRATION FROM JAPANESE UKIYO-E PAINTINGS, BOLD BUT DELICATE, IT IS THE MOST NATURALISTIC DESIGN OF THE COLLECTION.



**jacaranda**  
REFINED by *Thomas Griem*

Thomas Griem's first rug collection for Jacaranda Refined is inspired by the aesthetics of the 1920's, exciting years when the western world translated their fascination for the Middle and Far East into elegant shapes, geometric patterns and luxurious colour combinations.

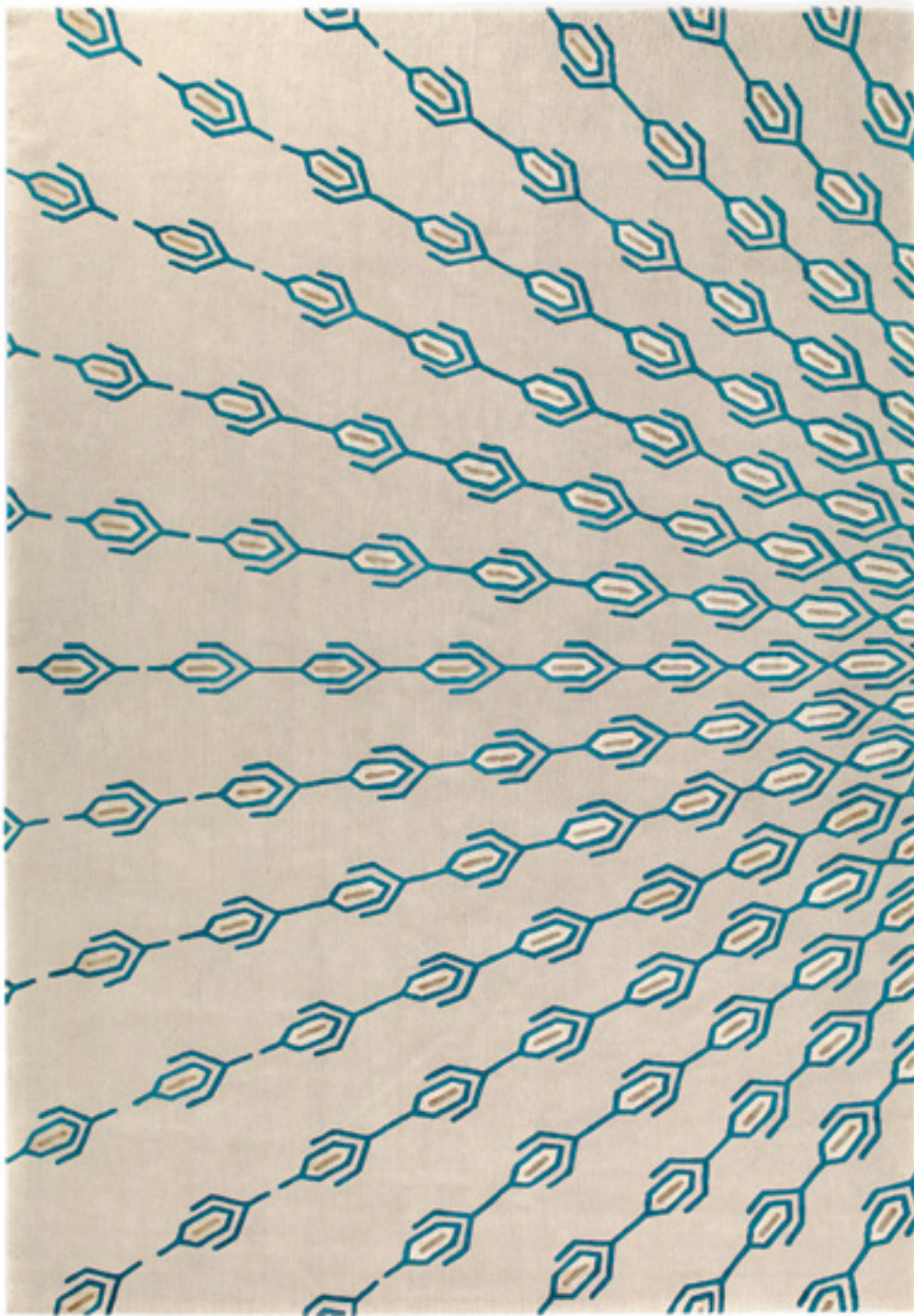
The 6 designs create an idealistic journey from the stylised, naturalistic shapes of the Ukiyo-e paintings of Japan, through India to Moroccan embroideries and on to the skyscraper architecture of New York.

Thomas Griem studied in Berlin and London where he won the Hubert Sands Memorial Award, and graduated with a BA and a diploma in Architecture. His design practice, TG-Studio, is now based in central London where his award winning projects include residential, retail and office schemes in international locations including London, Hong Kong and New York.

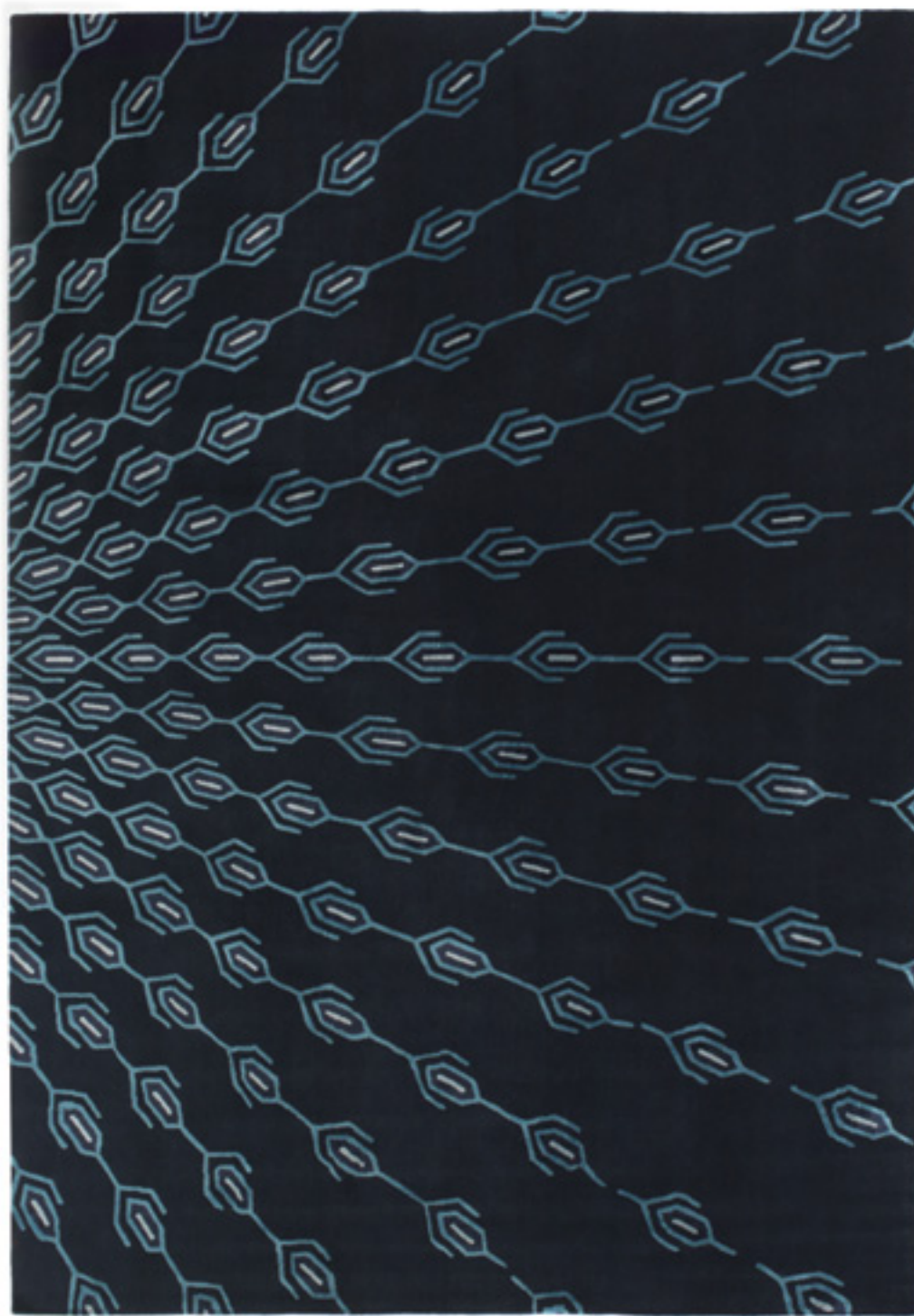
**JC1360 Arboreum** · 100 knot, 90% Tibetan wool 10% Chinese silk  
Stocked in 2 sizes - 300 x 200cm & 350 x 250cm · Designed by Thomas Griem · Photographed at 350 x 250cm



PEACOCK IS INSPIRED BY THE PLUMAGE OF INDIA'S MOST SPECTACULAR BIRD. THE SILK "FEATHERS" OF THE FAN CREATE A SEQUENCE OF PERSPECTIVE LINES THAT IMMEDIATELY CATCHES THE EYE.



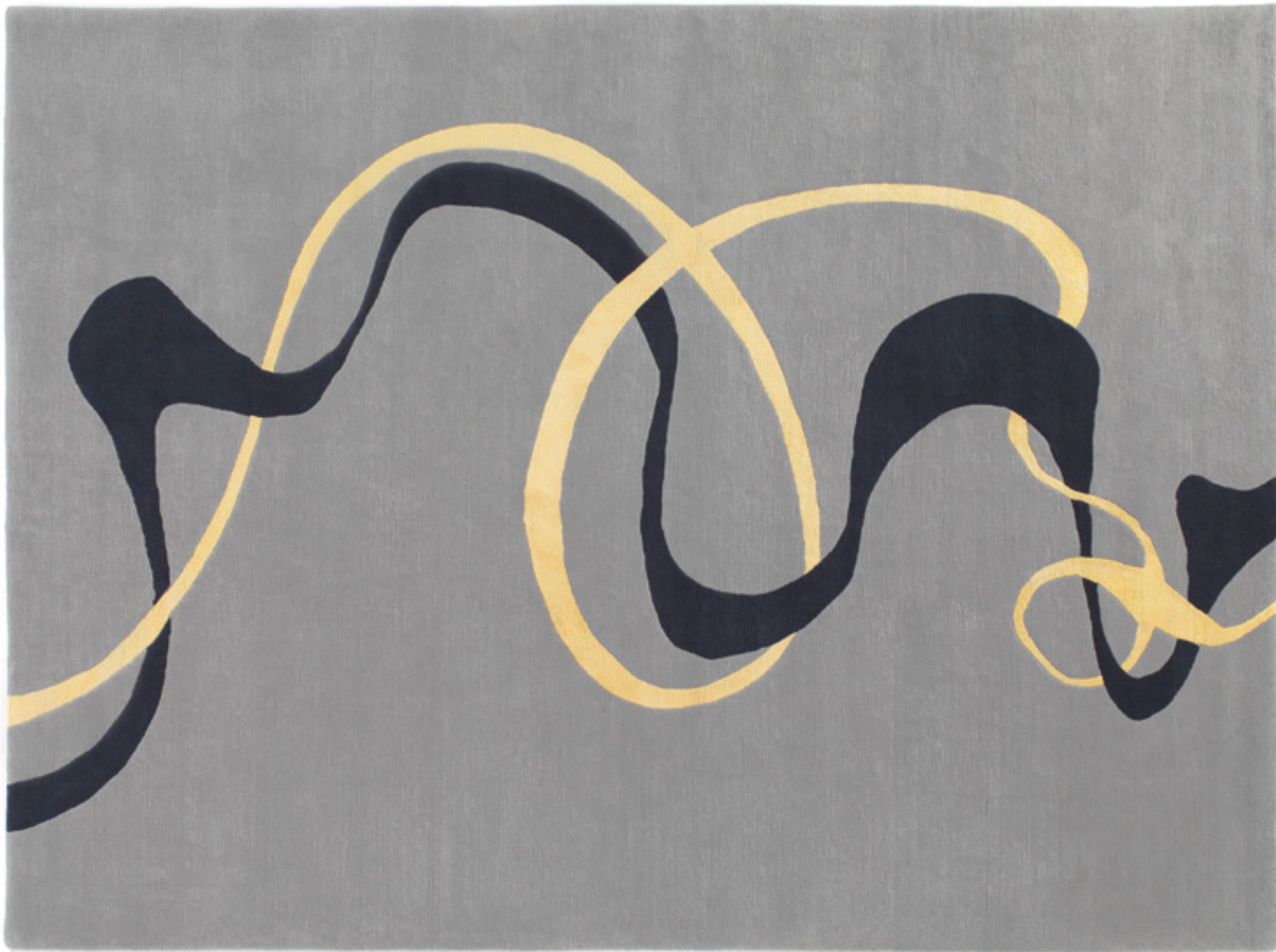
**JC1349 Peacock blue** · 100 knot, 70% Tibetan wool 30% Chinese silk  
Stocked in 2 sizes - 300 x 200cm & 350 x 250cm · Designed by Thomas Griem · Photographed at 350 x 250cm



**JC1565 Peacock dark** · 100 knot, 70% Tibetan wool 30% Chinese silk  
Stocked in 2 sizes - 300 x 200cm & 350 x 250cm · Designed by Thomas Griem · Photographed at 350 x 250cm



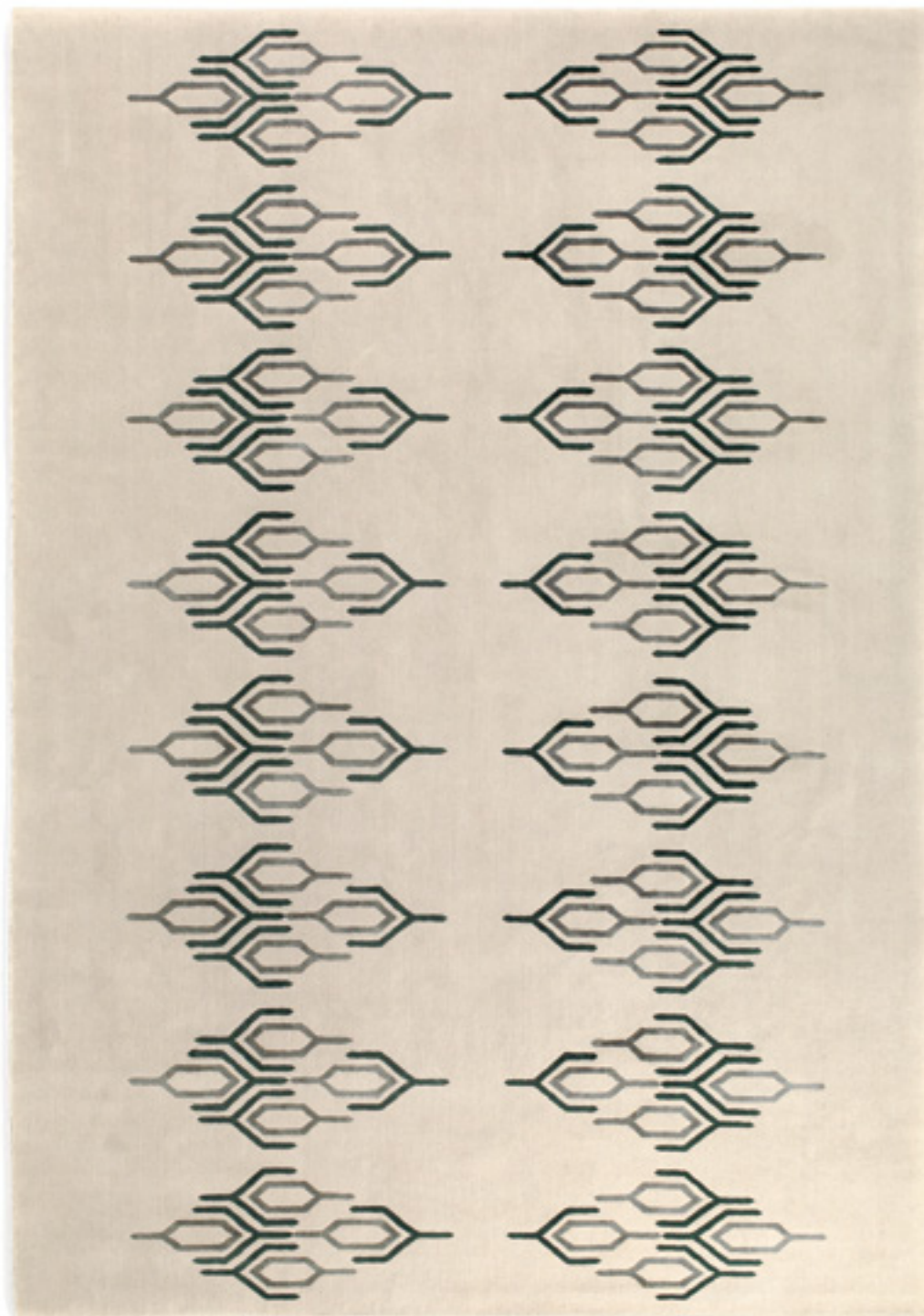
**SMOKE** DANCING AND SPIRALLING IN TWO GRACEFUL PLUMES. THESE SUBTLE COLOURS AND MOODY SHAPES ARE REMINISCENT OF THE AROMATIC SMOKE FROM THE FIRST WOOD FIRE OF AUTUMN.



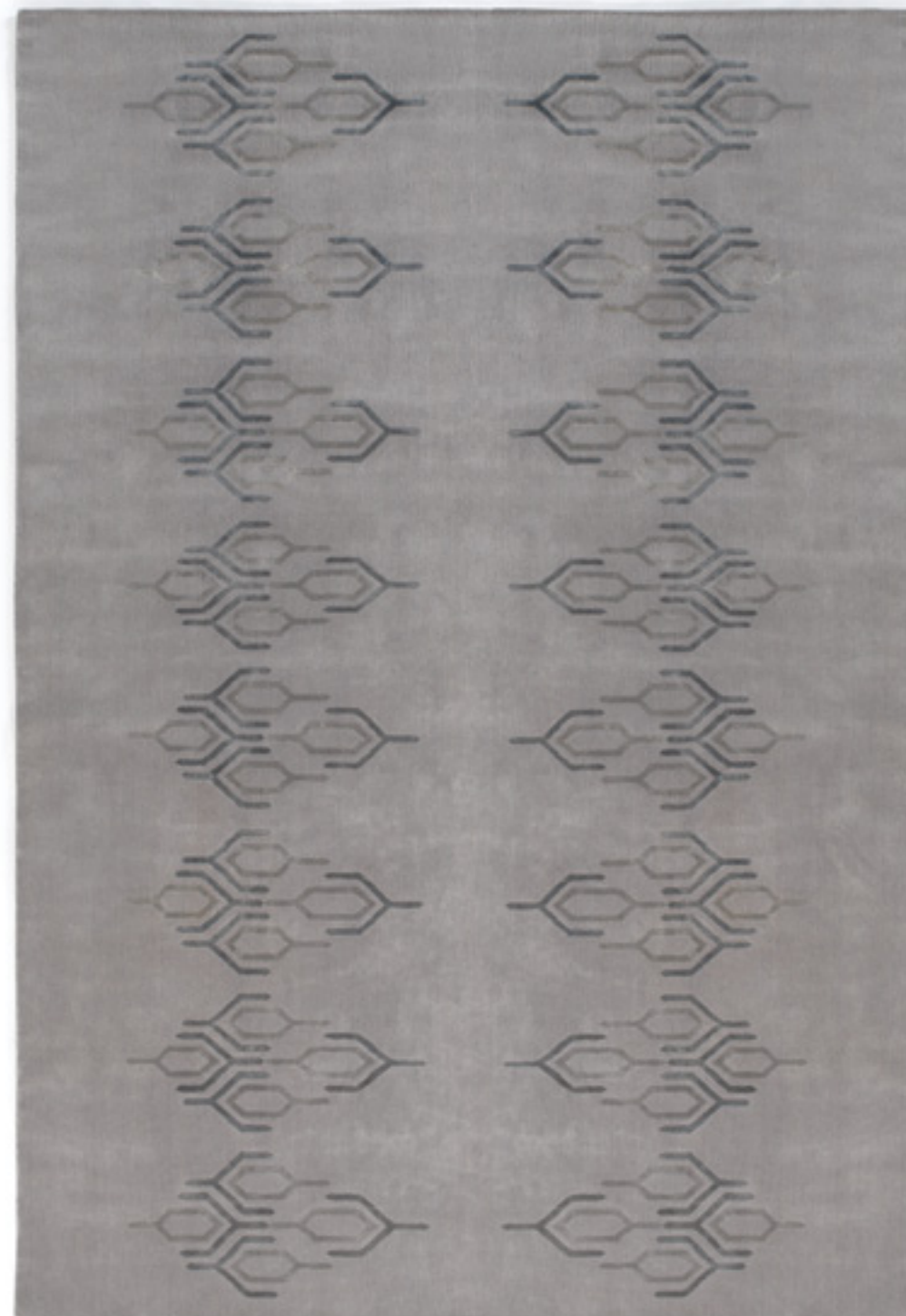
**JC1359 Smoke grey** · 60 knot, 80% New Zealand wool 20% Chinese silk  
Stocked in 2 sizes - 200 x 300cm & 250 x 350cm · Designed by Thomas Griem · Photographed at 250 x 350cm



**CASABLANCA** USES A SEQUENCE OF SHAPES AND THE SPACES BETWEEN THEM, TO COMPOSE A CONTEMPORARY TAKE ON MOROCCAN INTERIORS AND THE TRADITIONAL EMBROIDERIES OF THE MIDDLE EAST.



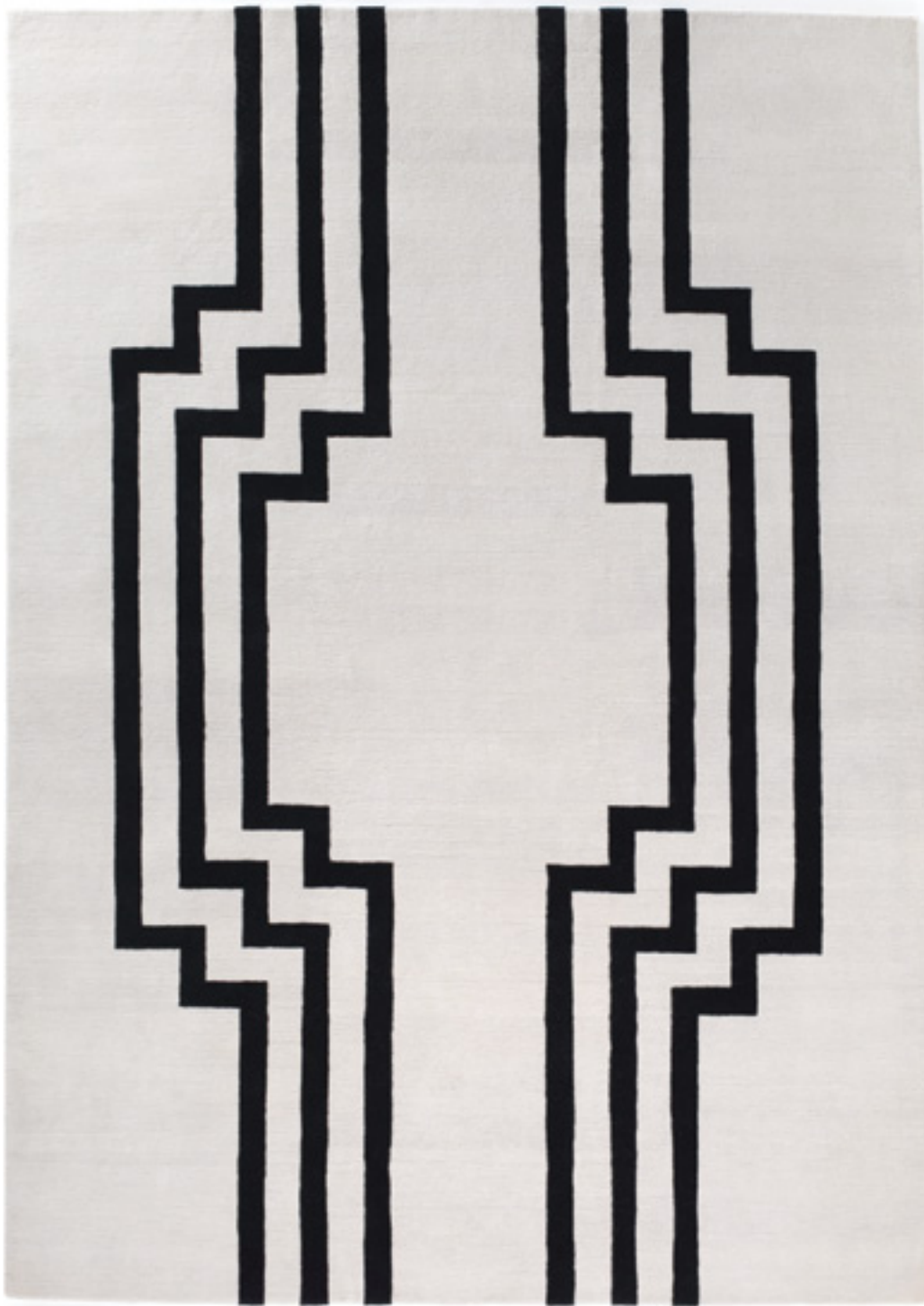
**JC1344 Casablanca dew** · 100 knot, 75% Tibetan wool 25% Chinese silk  
Stocked in 2 sizes - 300 x 200cm & 350 x 250cm · Designed by Thomas Griem · Photographed at 350 x 250cm



**JC1577 Casablanca mist** · 100 knot, 75% Tibetan wool 25% Chinese silk  
Stocked in 2 sizes - 300 x 200cm & 350 x 250cm · Designed by Thomas Griem · Photographed at 350 x 250cm



**DECO** REFLECTS THE MOULDINGS AND DECORATIVE CORNICING OF THE ARCHITECTURE OF THE TWENTIES. CONTRASTING BANDS IN DIFFERENT SHADES CREATE A GEOMETRIC SHAPE THAT IS BOTH CALM AND BOLD.



**JC1585 Deco monochrome** · 60 knot, 100% New Zealand wool  
Stocked in 2 sizes - 200 x 300cm & 250 x 350cm · Designed by Thomas Griem · Photographed at 250 x 350cm

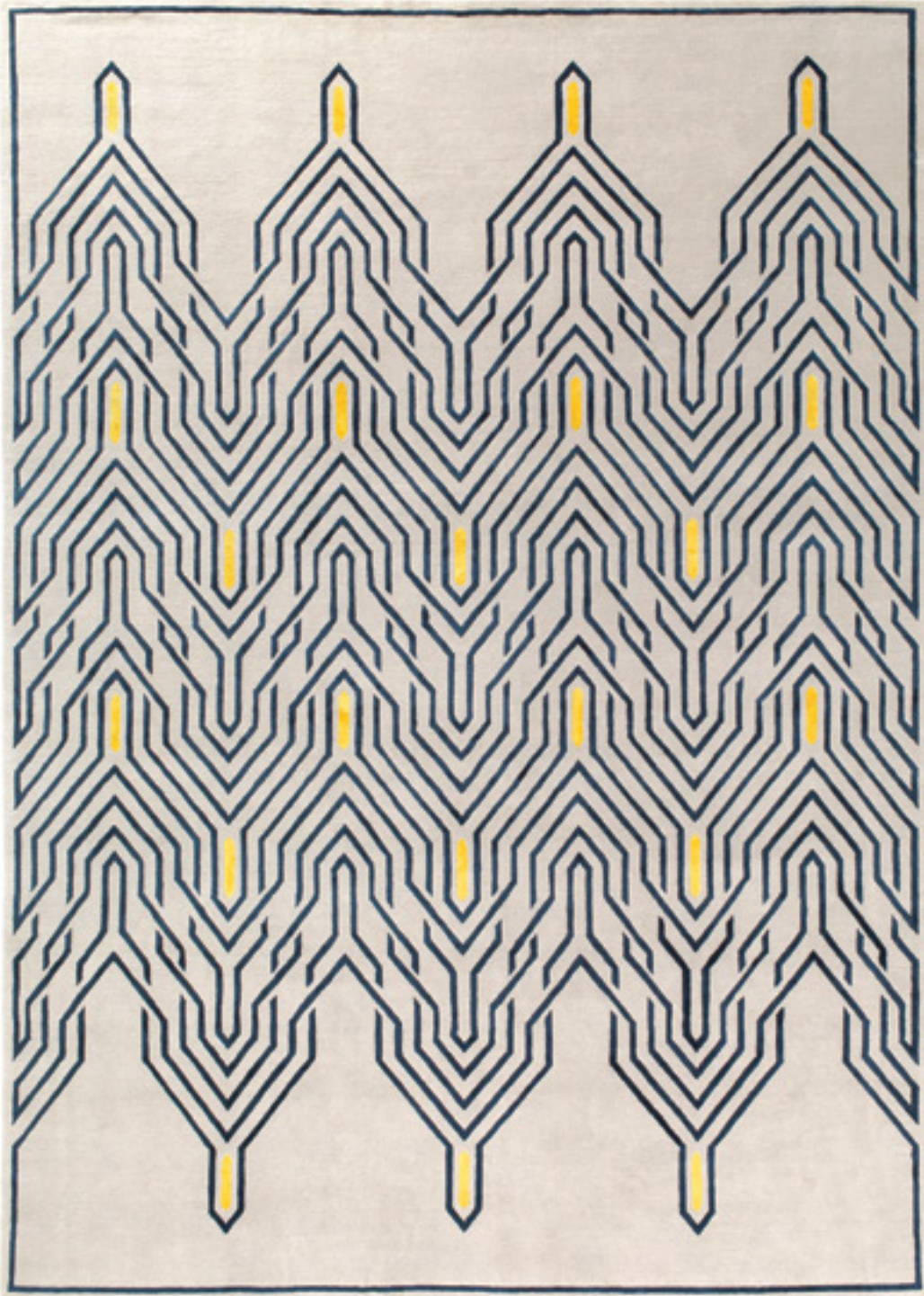
◁ **JC1375 Deco pink** · 60 knot, 70% New Zealand wool 30% Chinese silk  
Stocked in 2 sizes - 200 x 300cm & 250 x 350cm · Designed by Thomas Griem · Photographed at 250 x 350cm



**JC9644 Deco rainbow** · 60 knot, 100% New Zealand wool  
Stocked in 2 sizes - 200 x 300cm & 250 x 350cm · Designed by Thomas Griem · Photographed at 120 x 180cm



**CHRYSLER** TAKES ITS NAME FROM ONE OF THE MOST FAMOUS BUILDINGS IN THE WORLD. THE PATTERN SUGGESTS THE ICONIC SHAPE OF THE STRUCTURE, WHILE THE BLUE AND THE GOLDEN YELLOW RECALL THE LUXURIOUS DETAILING OF ITS INTERIORS.



**JC1339 Chrysler gold** · 100 knot, 60% Tibetan wool 40% Chinese silk  
Stocked in 2 sizes - 200 x 300cm & 250 x 350cm · Designed by Thomas Griem · Photographed at 250 x 350cm



**JC1570 Chrysler sand** · 100 knot, 60% Tibetan wool 40% Chinese silk  
Stocked in 2 sizes - 200 x 300cm & 250 x 350cm · Designed by Thomas Griem · Photographed at 120 x 180cm



**JC3812 Mala leaf** · 100 knot, 65% Tibetan wool 35% Chinese silk  
Stocked in 2 sizes - 200 x 300cm & 250 x 350cm · Designed by Jacaranda · Photographed at 250 x 350cm



**JC3807 Gradation teal** · 60 knot, 100% New Zealand wool  
Stocked in 3 sizes - 120 x 180 cm, 200 x 300cm & 250 x 350cm · Photographed at 200 x 300cm



**JC1994 Mirage opal** · 100 knot, 75% Tibetan wool 25% Banana silk  
Stocked in 2 sizes - 200 x 300cm & 250 x 350cm · Designed by Jacaranda · Photographed at 200 x 300cm



**JC1993 Mirage silver** · 100 knot, 75% Tibetan wool 25% Banana silk  
Stocked in 2 sizes - 200 x 300cm & 250 x 350cm · Designed by Jacaranda · Photographed at 200 x 300cm





**JC6285 Kulu** · 100 knot, 65% Tibetan wool 35% Chinese silk  
 Stocked in 2 sizes - 200 x 300cm & 250 x 350cm · Designed by Jacaranda · Photographed at 250 x 350cm



**JC3809 Sea wheat** · 100 knot, 65% Tibetan wool 35% Chinese silk  
 Stocked in 2 sizes - 200 x 300cm & 250 x 350cm · Designed by Jacaranda · Photographed at 250 x 350cm



**JC1782 Geometric** · 100 knot, 40% Tibetan wool 60% Chinese silk  
Stocked in 2 sizes - 200 x 300cm & 250 x 350cm · Designed by Jacaranda · Photographed at 250 x 350cm



**JC6287 Moon leaf** · 100 knot, 55% Tibetan wool 45% Chinese silk  
Stocked in 2 sizes - 200 x 300cm & 250 x 350cm · Designed by Jacaranda · Photographed at 250 x 350cm



**JC6730 Lily pond silver** · 100 knot, 70% Tibetan wool 30% Chinese silk  
 Made-to-measure only · Designed by Belynda Sharples · Photographed at 120 x 180cm



**JC6060 Lily pond gold** · 100 knot, 50% Tibetan wool 50% Chinese silk  
 Made-to-measure only · Designed by Belynda Sharples · Photographed at 120 x 180cm



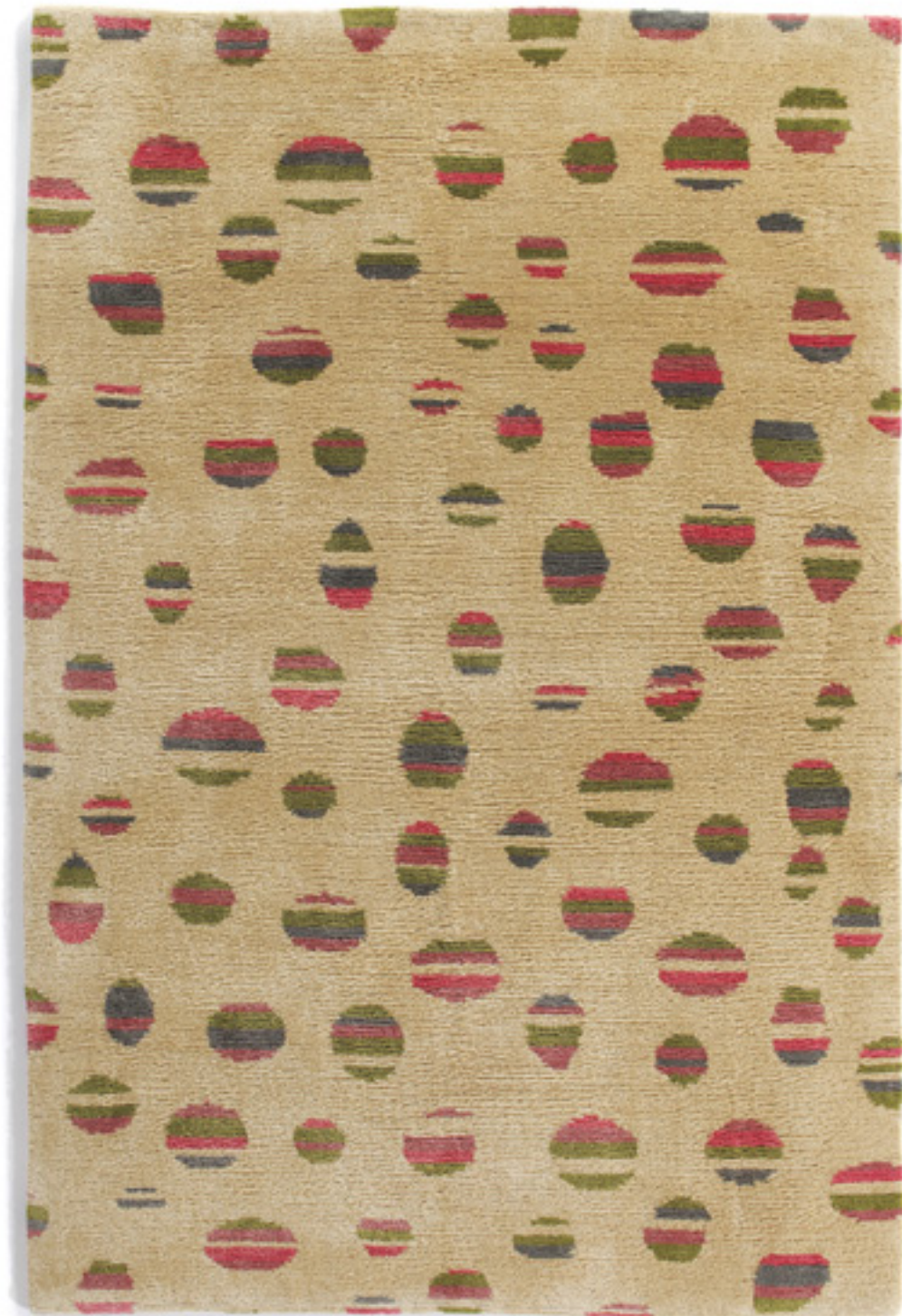


**JC6726 Finch** · 100 knot, 65% Tibetan wool 35% Chinese silk  
Made-to-measure only · Designed by Belynda Sharples · Photographed at 120 x 180cm

◁ **JC6729 Blackbirds** · 100 knot, 15% Tibetan wool 85% Chinese silk  
Made-to-measure only · Designed by Belynda Sharples · Photographed at 200 x 250cm



**JC6736 Passion flower** · 100 knot, 25% Tibetan wool 75% Chinese silk  
Made-to-measure only · Designed by Jacaranda · Photographed at 120 x 180cm



**JC3815 Dots asymmetric** · 60 knot, 100% Chinese silk  
Made-to-measure only · Designed by Jacaranda · Photographed at 120 x 180cm



**JC3813 Burma** · 100 knot, 40% Tibetan wool 60% Chinese silk  
Made-to-measure only · Designed by Jacaranda · Photographed at 120 x 180cm



**JC6289 Dots multi** · 100 knot, 65% Tibetan wool 35% Chinese silk  
 Made-to-measure only · Designed by Jacaranda · Photographed at 120 x 180cm



**JC5703 Dots autumn** · 100 knot, 65% Tibetan wool 35% Chinese silk  
 Made-to-measure only · Designed by Jacaranda · Photographed at 120 x 180cm



**JC6734 Butterfly** · 100 knot, 50% Tibetan wool 50% Chinese silk  
Made-to-measure only · Designed by Jacaranda · Photographed at 120 x 180cm



**JC6286 Thistle** · 100 knot, 100% Chinese silk  
Made-to-measure only · Designed by Jacaranda · Photographed at 120 x 180cm

Jacaranda's bespoke Himalayan rugs can be whatever you want them to be. The main choices are as follows:

- **Design.** Yours, one of Jacaranda's, or a mixture of the two
- **Colours.** These can be taken from Jacaranda's designs, Jacaranda's pom sets or colour matched to materials supplied by you
- **Knot count.** 60 knots per square inch gives a luxurious, chunky look. 100 knots per square inch is finer and allows more detail in the design. Ultra fine 120 knots per square inch are possible too
- **Yarn.** The luminosity and shine of pure Chinese silk versus the comfort and warmth of wool. Jacaranda weaves 60 knot stock rugs from New Zealand wool and 100 knot stock rugs from hand carded, hand spun Tibetan wool, prized for its long, strong fibres and high lanoline content which grows more lustrous with age. For bespoke rugs you can match different knot counts and yarn combinations. Jacaranda also weaves from wool/silk blended yarns which give a silky sheen at lower prices than pure silk
- **High/low or sheared flush.** Designs often incorporate pure silk motifs against wool backgrounds. These silk sections can be sheared flush to the background or left standing proud as in Jacaranda's Mala Leaf design on the inside back cover
- **Size.** Choose one of Jacaranda's stock sizes or specify your own. As rug size increases, design elements may be duplicated or scaled up, depending on the design or customer preference.

#### Bespoke rug order process:

- To ensure that every customer is completely happy with their bespoke Himalayan rug, it takes time to agree and then to check every detail
- When you contact Jacaranda to discuss your order you will be asked to confirm:
  - ▷ Design
  - ▷ Colours
  - ▷ Knot count
  - ▷ Yarns
  - ▷ Texture, velvet or cut & loop
  - ▷ Shearing instructions
  - ▷ Dimensions (always allow 5% tolerance on size because rugs are made by hand)
  - ▷ That any designs supplied are your own, or are free of copyright
- Our staff will provide a quote, and will advise of any surcharge or lead-time implications for colour matches or CAD designs
- Once you agree the quote, Jacaranda will commission a CAD drawing for sign off by the client which takes 7 working days on average to produce
- For custom colours, Jacaranda will provide colour poms for sign off by the client
- Once these are agreed, it takes 6 weeks approximately to hand-knot a strike off or segment of the rug for customer approval. These are normally 30 x 30cm, but size and shape will vary with design
- Once this strike off has been signed as approved and returned to Jacaranda, we will begin to hand-knot your rug and we will email you a picture of your rug taking shape on the loom
- Jacaranda's Himalayan rugs take 16 weeks on average from strike-off approval, through hand-knotting, washing, and finishing, to delivery. Very large rugs can take longer
- But we believe that when you receive your own, unique Himalayan work of art, you will agree that it is very much worth the wait.

Please telephone Jacaranda to order our Himalayan sample box (below) or discuss your choices. Or you may visit our London showroom or Northamptonshire head office to:

- See Jacaranda's designs for real
- Borrow a 120 x 180cm rug or 60 x 90cm rug section to show your client or test in situ. Deposit required
- Work through colour combinations using our pom sets containing over 1500 colours.

If you want 'working' black and white copies of the designs in this brochure, they are available for download and print from our website

[www.jacarandacarpets.com](http://www.jacarandacarpets.com).



### Fading

Natural fibres will fade over time and this may be accelerated by exposure to strong light. This should be taken into consideration when choosing rugs for areas that experience strong light or direct sunlight.

### Size tolerance

While every effort is made to manufacture to the correct size, slight variations are unavoidable and natural fibres can shrink as they move to a different climate. Himalayan hand-knotted rug sizes may vary by up to 5%. They are not recommended for inset locations.

### Stock reservation

Jacaranda is happy to reserve stock rugs for up to 48 hours.

### Delivery lead times

- For stock Himalayan rugs our standard delivery time within mainland Britain is 5 working days
- Bespoke Himalayan rugs take approximately 16 weeks to deliver from date of strike off approval.

### Inspection

Our labour intensive processes are integral to the creation of our 'characterful' textures and wonderful natural colours. They cannot and do not set out to mirror the uniformity of 'machine made' rugs. Any slight variations in colour and weave in our hand-knotted products are part of their 'handmade character' rather than 'faults'.

At Jacaranda we take quality control very seriously and each rug is checked and rechecked. Despite our best efforts however the odd genuine error does slip through and strange things can happen in transit.

Please ensure that all products are checked and any problems reported within 48 hours of delivery. If your rug arrives with damaged packaging, please note the damage on the delivery note before signing for receipt.

### Rug underlay

This makes rugs more luxurious to walk on, can reduce wear, lengthen rug life and reduce rug movement or 'creep'. Jacaranda offers high quality rug underlay in standard packages or cut to size.

### Regular care

Rotate rug regularly to spread wear and extend life.

Vacuum carpets regularly using an upright cleaner on **cut pile rugs**, or a cylinder machine with a smooth nozzle on any **rugs with loops**. It is normal for wool rugs to 'shed' fibres when new to create fluff. This is normal, not related to quality, and will not affect appearance or durability. It is simply wool fibres released from the yarn ends where they are cut to create the pile. Vacuum regularly and shedding will soon cease.

Avoid using all cleaning chemicals sold for home use, some of which can discolour rugs. Detergent residue can become sticky when dry and subsequently attract dirt.

For an overall clean please consult a professional cleaning company.

### Spillages and stains

Act fast to pick up any solids and to blot up liquid with plain white absorbent paper. Blot gently, changing paper as necessary. Do not rub or scrub as this can 'burst' the pile surface causing permanent damage. Leave the pile laying in the natural pile direction or restore gently to correct direction using a clean clothes brush. Leave to dry naturally.

For residual stains. Dilute any remaining residue or stain with cold water (never hot) on a clean cloth, then blot and dry as above. Repeat as necessary. For unusual or stubborn stains always seek professional advice from a reputable cleaning company or visit [www.woolsafe.org](http://www.woolsafe.org) for advice. Avoid domestic stain removal treatments which can discolour carpets or leave a dirt attracting, sticky residue.

Jacaranda aims to maintain on their website at [www.jacarandacarpets.com](http://www.jacarandacarpets.com), a list of reputable, professional carpet cleaners in the UK and abroad.





**Jacaranda Carpets Limited**

1 Cockerel Rise, Magnetic Park, Desborough, Northamptonshire NN14 2WE, UK

**Tel:** +44 (0)1536 762 697 **Email:** [sales@jacarandacarpets.com](mailto:sales@jacarandacarpets.com) **Web:** [www.jacarandacarpets.com](http://www.jacarandacarpets.com)

**Jacaranda Showroom** at Design Centre Chelsea Harbour, Unit 2/9, 2nd Floor South Dome, London SW10 0XE **Tel:** +44 (0)207 351 6496

For International distributors please visit [www.jacarandacarpets.com](http://www.jacarandacarpets.com)



