



jacaranda
CARPETS & RUGS



26

6

43

21

25

33

34

Index

3 HAND-WOVEN CARPETS

Hand-woven carpets	3-18
Why choose handmade floorcoverings?	4-5

19 FINE LOOMED CARPETS

Fine loomed carpets	19-22
---------------------	-------

23 HAND-WOVEN RUGS

Hand-woven stock rugs	23-35
Bespoke rugs made-to-measure at source	36
Bespoke rugs made-to-measure from UK broadloom stock	37
Rug underlay	38

39 LEATHER RUGS

Leather rugs	39-41
--------------	-------

42 HIMALAYAN HAND-KNOTTED RUGS

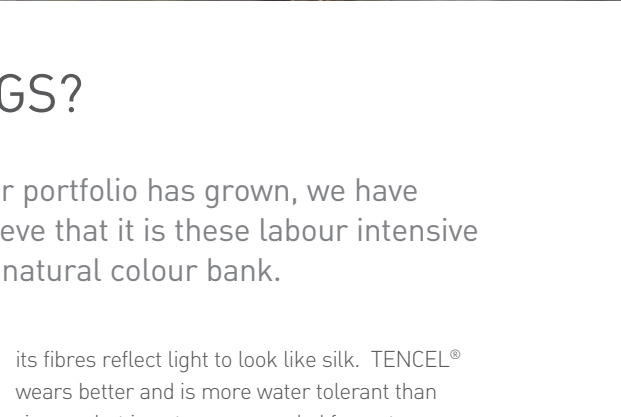
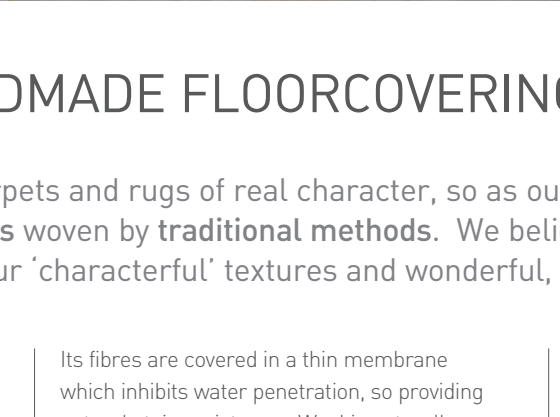
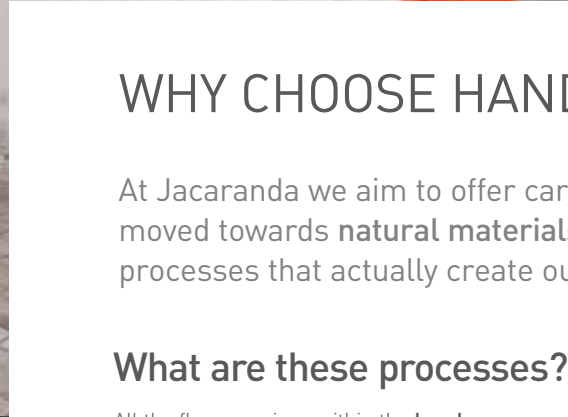
Himalayan hand-knotted rugs	42-43
-----------------------------	-------

44 ORDERING, FITTING, CARPET CARE

Broadloom specification summary	44-47
Choosing and ordering	48
Delivery and fitting	49
Carpet care	50



HAND-WOVEN CARPETS



WHY CHOOSE HANDMADE FLOORCOVERINGS?

At Jacaranda we aim to offer carpets and rugs of real character, so as our portfolio has grown, we have moved towards **natural materials** woven by **traditional methods**. We believe that it is these labour intensive processes that actually create our 'characterful' textures and wonderful, natural colour bank.

What are these processes?

All the floorcoverings within the **hand-woven** carpet and hand-woven rug sections of this brochure are created on traditional wooden looms. Their creation involves large numbers or highly skilled artisans and rigorous quality control, as the pictures here demonstrate.

Why natural fibres?

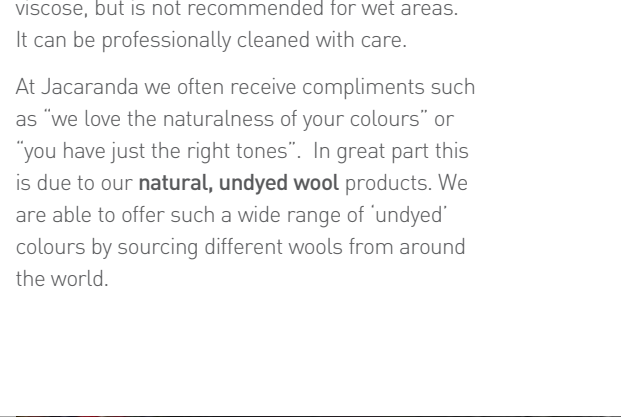
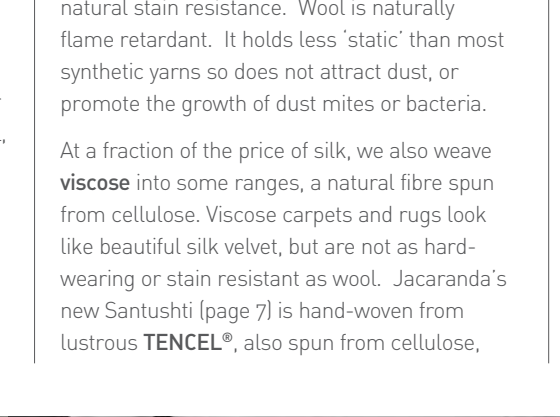
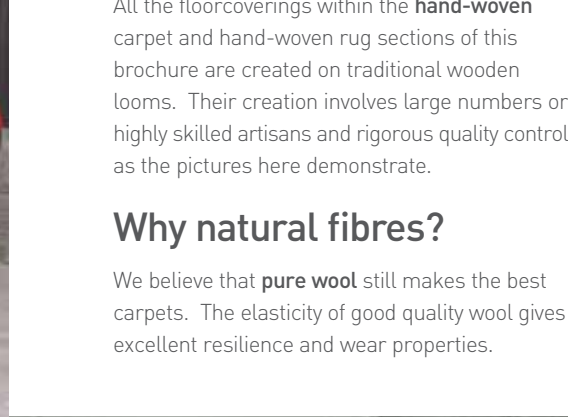
We believe that **pure wool** still makes the best carpets. The elasticity of good quality wool gives excellent resilience and wear properties.

Its fibres are covered in a thin membrane which inhibits water penetration, so providing natural stain resistance. Wool is naturally flame retardant. It holds less 'static' than most synthetic yarns so does not attract dust, or promote the growth of dust mites or bacteria.

At a fraction of the price of silk, we also weave **viscose** into some ranges, a natural fibre spun from cellulose. Viscose carpets and rugs look like beautiful silk velvet, but are not as hard-wearing or stain resistant as wool. Jacaranda's new Santushti (page 7) is hand-woven from lustrous **TENCEL®**, also spun from cellulose,

its fibres reflect light to look like silk. **TENCEL®** wears better and is more water tolerant than viscose, but is not recommended for wet areas. It can be professionally cleaned with care.

At Jacaranda we often receive compliments such as "we love the naturalness of your colours" or "you have just the right tones". In great part this is due to our **natural, undyed wool** products. We are able to offer such a wide range of 'undyed' colours by sourcing different wools from around the world.





Please check that handmade floorcoverings are right for you or your client

We choose to use labour intensive processes and natural fibres to reduce the environmental impact of our carpet production. We believe also, that they are responsible for our 'characterful' textures and beautiful, natural colours. We love the slight quirkiness that can only be handmade.

However these handmade characteristics so highly valued by many, do not appeal to all. Hand-weaving and hand-knotting cannot and do not set out to mirror the uniformity of 'machine made' carpet. Those wanting a perfectly uniform finish should consider something machine woven from Jacaranda's **fine loomed** section on pages 19-22.

At Jacaranda we take quality control very seriously, and each roll and rug is checked

and rechecked to make sure that it falls within industry tolerances. However slight variations in colour, weave and pile weight are inevitable and part of their 'handmade' character rather than faults. Natural fibres may fade over time, especially if exposed to strong light.

From yarn to carpet

- 1 Wool and viscose yarn arrives at the factory in hanks
- 2 Woollen weft is transferred from hanks to bobbins
- 3 Cotton warp is prepared for the loom
- 4 Carpets are woven on traditional wooden looms 4 or 5m wide
- 5 Each loom is worked manually by 3 to 4 strong operatives
- 6 Without the help of electricity
- 7 Using a traditional wooden shuttle
- 8 Loops are woven over metal rods
- 9 Which are hand cut to create the pile
- 10 Here a smaller loom is used

- 11 To weave felted yarn into a 'Pebbles' rug
- 12 Carpets and rugs are stretched onto grippers and backed with latex
- 13 Actionbac is applied to the damp latex for structural stability
- 14 Newly backed carpets used to be dried in the sun, but now huge ovens provide constant drying temperatures all year round
- 15 Handwoven rugs receive a secondary cotton backing then are hand sewn round edges
- 16 Every rug and roll is checked, any tufts snipped or tiny imperfections repaired
- 17 Velvets are sheared. This is why rolls can vary in pile height and a light shear is sometimes necessary along seams
- 18 No carpet leaves the factory before a final check and a signature to its backing by Jacaranda's quality controller
- 19 It's then rolled
- 20 Wrapped and hand sewn into protective packaging for its journey west.





CHATAPUR & SATPURA STRIPE

Hand-woven broadloom | From stock

Chatapur

Size: Broadloom 4 & 5m widths from stock

Rugs stocked in 5 standard sizes (page 24)

Rugs made-to-measure (page 36 & 37)

Pile material: 100% viscose

Gross pile weight: 3700g/m²

Not suitable for heavy traffic areas or where water may cause stains

Clean by dry extraction methods only

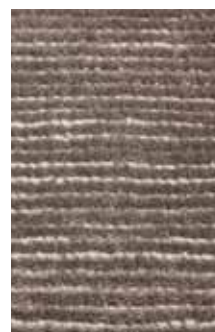
Full product information on pages 44-47



Chatapur - Platinum



Chatapur - Zinc



Chatapur - Iron



Chatapur - Night

Satpura Stripe

Size: Broadloom 4 & 5m widths from stock

Rugs stocked in 5 standard sizes (page 29)

Rugs made-to-measure (page 36 & 37)

Pile material: 75% wool 25% viscose

Gross pile weight: 3500g/m²

Do not fit in bathrooms or wet areas

Clean by dry extraction methods only



Satpura Stripe - Cream



Satpura Stripe - Ivory



Satpura Stripe - Silver

SANTUSHTI & WILLINGDON

Hand-woven broadloom | From stock

Santushti

Size: Broadloom 4 & 5m widths from stock
Rugs made-to-measure (page 36 & 37)

Pile material: 100% TENCEL®

Gross pile weight: 3000g/m²

TENCEL® is spun from cellulose, its fibres reflect light to look like silk. TENCEL® wears better and is more water tolerant than viscose, but is not recommended for wet areas.

Full product information on pages 44-47



New Santushti Wheat



New Santushti Ivory



New Santushti Ice



New Santushti Starlight



New Santushti Platinum



New Santushti Storm



New Santushti Graphite



New Willingdon Mushroom



New Willingdon Eggshell



New Willingdon Pewter



New Willingdon Silver



New Willingdon Cloudy Grey



New Willingdon Dusk



New Willingdon Night

Tel: +44 (0)1536 762 697

New Willingdon Cloudy Grey >





VELVET STRIPE & KASARI VELVET

Hand-woven broadloom | From stock

Velvet Stripe

Size: Broadloom 1, 4 & 5m widths from stock

Rugs made-to-measure (page 36 & 37)

Pile material: 100% natural undyed wool

Gross pile weight: 2500g/m²

Kasari Velvet

Size: Broadloom 4 & 5m widths from stock

Rugs made-to-measure (page 36 & 37)

Pile material: 100% natural undyed wool

Gross pile weight: 2700g/m²

Full product information on pages 44-47



Ivory & Grey 16



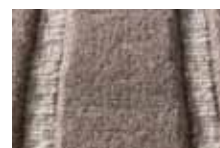
Oatmeal & Ivory 7



Oatmeal & Grey 10



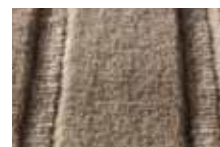
Grey & Oatmeal 24



Pewter & Ivory 37



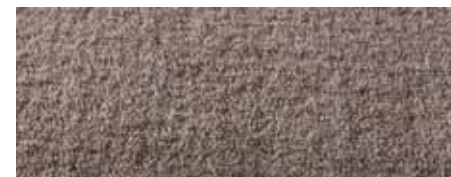
Pewter & Grey 36



Steel Grey & Oatmeal 19



Taupe & Steel Grey 31



Kasari Velvet - Pewter



Kasari Velvet - Ivory



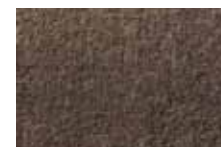
Kasari Velvet - Oatmeal



Kasari Velvet - Grey



Kasari Velvet - Steel Grey



Kasari Velvet - Taupe



Kasari Velvet - Charcoal

HEAVY VELVET

Hand-woven broadloom | From stock

Heavy Velvet

Size: Now stocked as 4m as well as 5m broadloom

Rugs made-to-measure (page 36 & 37)

Pile material: 100% pure wool

Gross pile weight: 3500g/m²

Colour match service available for orders over 50m²

When fitting, a light shear may be necessary along seams

Full product information on pages 44-47



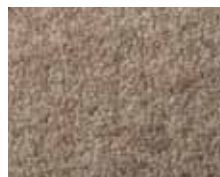
New Eggshell



Silver



Smoke



Natural Grey



Ivory



New Pewter



Pearl



Oatmeal



New Cloudy Grey



New Dusk



Barley



New Zinc



New Night



New Atlantic Blue



Chocolate



Dark Grey

Tel: +44 (0)1536 762 697

New Heavy Velvet Atlantic Blue >





RAJGARH

Hand-woven broadloom | From stock

Rajgarh

Size: Broadloom 4 & 5m widths from stock

Rugs made-to-measure (page 36 & 37)

Pile material: 60% viscose 40% wool

Gross pile weight: 3200g/m²

Colour match service available for orders over 50m²

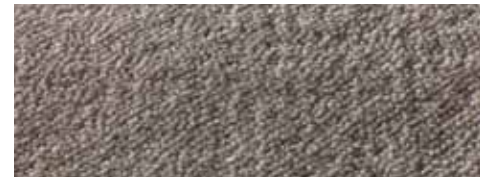
Not suitable for heavy traffic areas or where water may cause stains

Clean by dry extraction methods only

Full product information on pages 44-47



Silver



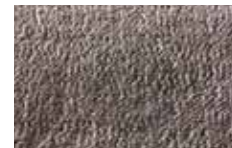
Dappled Grey



Eggshell



Pearl



Gunmetal



Dappled Brown



Tusk



Cloudy Grey



Pewter



Caramel



Oatmeal



Dusky Grey



Charcoal



Bronze

<Rajgarh Silver

www.jacarandacarpets.com

RAMPUR & RANILA

Hand-woven broadloom | From stock

Rampur

Size: Broadloom 4 & 5m widths from stock

Rugs made-to-measure (page 36 & 37)

Pile material: 60% viscose 40% wool

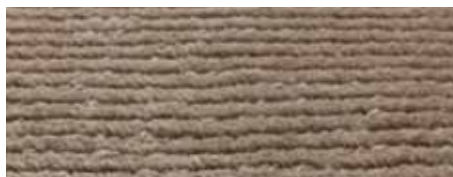
Gross pile weight: 2200g/m²

Colour match service available for orders over 50m²

Not suitable for heavy traffic areas or where water may cause stains

Clean by dry extraction methods only

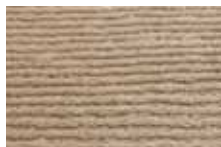
Full product information on pages 44-47



Rampur - Smoke



Rampur - Ivory



Rampur - Wheat



Rampur - Pearl



Rampur - Oatmeal



Rampur - Grey



Rampur - Taupe

Ranila

Size: Broadloom 4 & 5m widths from stock

Rugs made-to-measure (page 36 & 37)

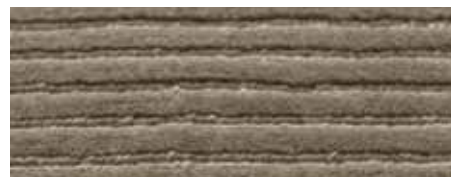
Pile material: 60% viscose 40% wool

Gross pile weight: 2200g/m²

Colour match service available for orders over 50m²

Not suitable for heavy traffic areas or where water may cause stains

Clean by dry extraction methods only



Ranila - Fern



Ranila - Ivory



Ranila - Pearl



Ranila - Grey



Ranila - Oatmeal



Ranila - Smoke



Ranila - Taupe





SIMLA

Hand-woven broadloom | From stock

Simla

Size: Broadloom 4 & 5m widths from stock

Rugs stocked in 5 standard sizes (page 26 & 27)

Rugs made-to-measure (page 36 & 37)

Pile material: 100% viscose

Gross pile weight: 3500g/m²

The pile will crush and move to reflect light in different directions
and give the appearance of silk velvet

Not suitable for heavy traffic areas or where water may cause stains

Clean by dry extraction methods only

Full product information on pages 44-47



<Simla Gunmetal rug (page 27) on Chatapur Iron broadloom (page 6)

Simla Atlantic Blue >





SAMODE & SAMBAR

Hand-woven broadloom | From stock

Samode

Size: Broadloom 4m width from stock
5m for special orders over 50m²
Rugs made-to-measure (page 36 & 37)

Pile material: 100% pure wool

Gross pile weight: 2300g/m²

Sambar

Size: Broadloom 4m width from stock
5m for special orders over 50m²
Rugs made-to-measure (page 36 & 37)

Pile material: 100% pure wool

Gross pile weight: 2500g/m²

Full product information on pages 44-47



Samode - Smoke



Samode - Ivory



Samode - Mushroom



Samode - Pearl



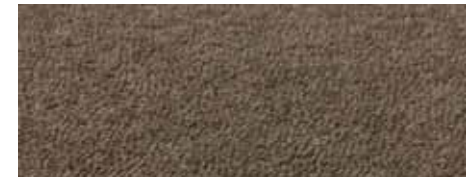
Samode - Silver



Samode - Taupe



Samode - Granite



Sambar - Granite



Sambar - Ivory



Sambar - Mushroom



Sambar - Pearl



Sambar - Silver



Sambar - Smoke



Sambar - Taupe

<|Samode Silver

www.jacarandacarpets.com

BILPAR & BAHARI

Hand-woven broadloom | From stock

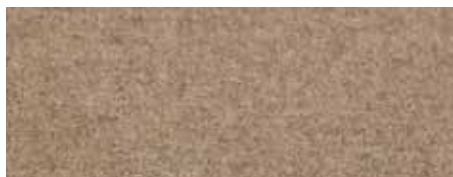
Bilpar

Size: Broadloom 4m width from stock
Rugs made-to-measure (page 36 & 37)
Pile material: 100% natural undyed wool
Gross pile weight: 2600g/m²

Bahari

Size: Broadloom 4m width from stock
Rugs made-to-measure (page 36 & 37)
Pile material: 100% natural undyed wool
Gross pile weight: 2000g/m²

Full product information on pages 44-47



Bilpar Sand



Bilpar Pearl



Bilpar Wheat



Bilpar Grey



Bilpar Oatmeal



Bilpar Steel Grey



Bilpar Taupe



Bahari Grey



Bahari Pearl



Bahari Wheat



Bahari Sand



Bahari Oatmeal



Bahari Steel Grey



Bahari Taupe





PALANA & PATRAN

Hand-woven broadloom | From stock

Palana

Size: Broadloom 4 & 5m widths from stock

Rugs made-to-measure (page 36 & 37)

Pile material: 100% pure wool

Gross pile weight: 2500g/m²

Patran

Size: Broadloom 4 & 5m widths from stock

Rugs made-to-measure (page 36 & 37)

Pile material: 100% pure wool

Gross pile weight: 3000g/m²

Full product information on pages 44-47



Palana - Zinc



Palana - Ivory



Palana - Wheat



Palana - Barley



Palana - Oatmeal



Palana - Taupe



Palana - Steel Grey



Patran - Barley



Patran - Ivory



Patran - Wheat



Patran - Oatmeal



Patran - Taupe



Patran - Zinc



Patran - Steel Grey

<Patran Ivory

www.jacarandacarpets.com

OTTO & ABHA

Hand-woven broadloom | From stock

Otto

Size: Now stocked as 4m as well as 5m broadloom

New rugs stocked in 3 standard sizes (page 33)

Rugs made-to-measure (page 36 & 37)

Pile material: 100% natural undyed wool

Gross pile weight: 3500g/m²

Abha

Size: Now stocked as 4m as well as 5m broadloom

New rugs stocked in 3 standard sizes (page 32)

Rugs made-to-measure (page 36 & 37)

Pile material: 100% natural undyed wool

Gross pile weight: 3800g/m²

Due to its weight, Abha should be fitted by the double stick method

Full product information on pages 44-47



Otto - Ivory



Otto - Beige



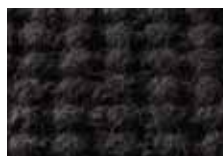
New Otto - Iron Grey



Otto - Natural Oatmeal



Otto - Natural Chocolate



Otto - Natural Charcoal



Abha - Ivory



Abha - Natural Oatmeal



Abha - Natural Grey



Abha - Natural Charcoal





SANSKRIT & RAJASTHAN

Hand-woven broadloom | From stock

Sanskrit

Size: Broadloom 4 & 5m widths from stock

Rugs made-to-measure (page 36 & 37)

Pile material: 100% natural undyed wool

Gross pile weight: 2400g/m²

Rajasthan

Size: Broadloom 4 & 5m widths from stock

Rugs made-to-measure (page 36 & 37)

Pile material: 100% natural undyed wool

Gross pile weight: 2700g/m²

Full product information on pages 44-47



Sanskrit - Steel Grey



Sanskrit - Ivory



Sanskrit - Oatmeal



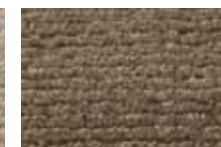
Sanskrit - Sand



Sanskrit - Barley



Sanskrit - Grey



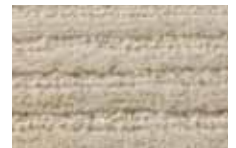
Sanskrit - Taupe



Rajasthan - Grey



Rajasthan - Ivory



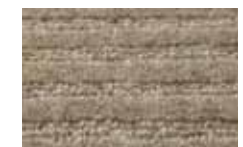
Rajasthan - Oatmeal



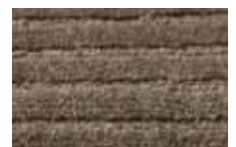
Rajasthan - Sand



Rajasthan - Barley



Rajasthan - Steel Grey



Rajasthan - Taupe

<Rajasthan Grey

New Seville Wilton Velvet Oatmeal (page 21) >



FINE LOOMED CARPETS



SANTORINI, SICILY & SARDINIA

Fine loomed broadloom | From stock

Santorini

Size: Broadloom 4m width from stock

Rugs made-to-measure (page 37)

Pile material: 100% New Zealand wool

Gross pile weight: 2500g/m²

Sicily & Sardinia

Size: Broadloom 4m width from stock

Rugs made-to-measure (page 37)

Pile material: 100% New Zealand wool

Gross pile weight: 2500g/m²

Full product information on pages 44-47



Santorini - Ivory



Santorini - Sand



Sardinia - Ivory



Sardinia - Sand



Santorini - Oatmeal



Sicily - Ivory



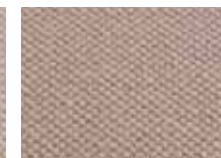
Sardinia - Oatmeal



Santorini - Silver



Sicily - Sand



Sicily - Oatmeal



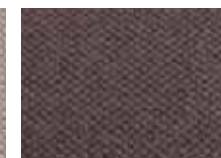
Sardinia - Silver



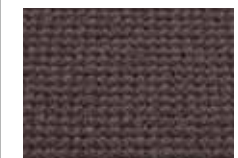
Santorini - Granite



Sicily - Silver



Sicily - Granite



Sardinia - Granite

SEVILLE & SALAMANCA

Fine loomed broadloom | From stock

Seville Wilton Velvet

Size: Broadloom 4m width from stock

Rugs made-to-measure (page 37)

Pile material: 100% pure wool

Gross pile weight: 1410g/m²

Salamanca Wilton

Size: Broadloom 4m width from stock

Rugs made-to-measure (page 37)

Pile material: 100% pure wool

Gross pile weight: 1410g/m²

Full product information on pages 44-47



New Seville Wilton - Oatmeal



New Ivory

New Pearl



New Wheat

New Barley



New Taupe

New Graphite

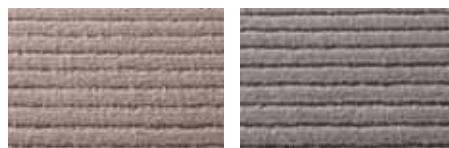


New Salamanca Wilton - Taupe



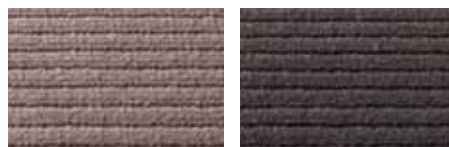
New Ivory

New Pearl



New Wheat

New Oatmeal



New Barley

New Graphite

Tel: +44 (0)1536 762 697

New Salamanca Wilton Ivory▷





NATURAL WEAVE

Fine loomed broadloom | From stock

Natural Weave Square

Size: Broadloom 4m width from stock

Rugs made-to-measure (page 37)

Pile material: 100% New Zealand wool

Gross pile weight: 1800g/m²

97% bio-degradable

Natural Weave Hexagon

Size: Broadloom 4m width from stock

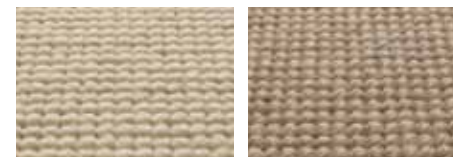
Rugs made-to-measure (page 37)

Pile material: 100% New Zealand wool

Gross pile weight: 1400g/m²

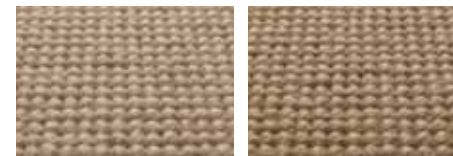
97% bio-degradable

Full product information on pages 44-47



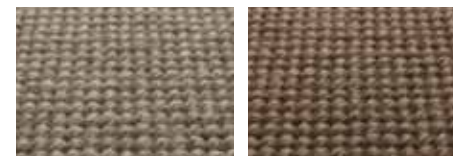
Square - Ivory

Square - Oatmeal



Square - Pearl

Square - Wheat



Square - Grey

Square - Taupe



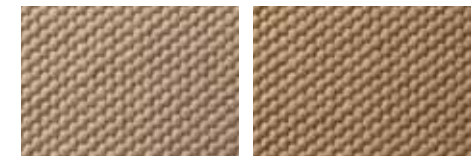
Square - Charcoal

Square - Ebony



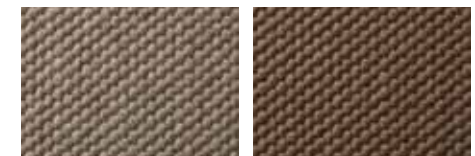
Hexagon - Ivory

Hexagon - Oatmeal



Hexagon - Pearl

Hexagon - Wheat



Hexagon - Grey

Hexagon - Taupe



Hexagon - Charcoal

Hexagon - Ebony



HAND-WOVEN RUGS



CHATAPUR

Hand-woven rugs | From stock



Yarn: 100% viscose

Backing: Cotton

Gross total weight: 4500g/m²

Stocked in 5 standard sizes: 120 x 180cm, 170 x 240cm, 200 x 250cm, 200 x 300cm and 250 x 350cm

Border width 2.5cm on all rug sizes

Also available made-to-measure (page 36 & 37)

Not suitable for heavy traffic areas or where water may cause stains

Clean by dry extraction methods only



New Chatapur - Platinum



New Chatapur - Zinc



New Chatapur - Iron



New Chatapur - Night

< New Chatapur Night

www.jacarandacarpets.com

UDAIPUR

Hand-woven rugs | From stock



Yarn: 100% viscose

Backing: Cotton

Gross total weight: 4500g/m²

Stocked in 5 standard sizes: 120 x 180cm, 170 x 240cm,
200 x 250cm, 200 x 300cm and 250 x 350cm

Border width 2.5cm on all rug sizes

Also available made-to-measure at source (page 36)

Not suitable for heavy traffic areas or where water may cause stains

Clean by dry extraction methods only



New Udaipur left to right:

Blue & White, Marine & Grey, Blue & Green, Green & Navy, Green & Lavender, Green & Rose, Pink & Green,
Pink & Lavender, Blue & Rose

Tel: +44 (0)1536 762 697

New Udaipur Pink & Green >





SIMLA

Hand-woven rugs | From stock



Yarn: 100% viscose

Backing: Cotton

Gross total weight: 4500g/m²

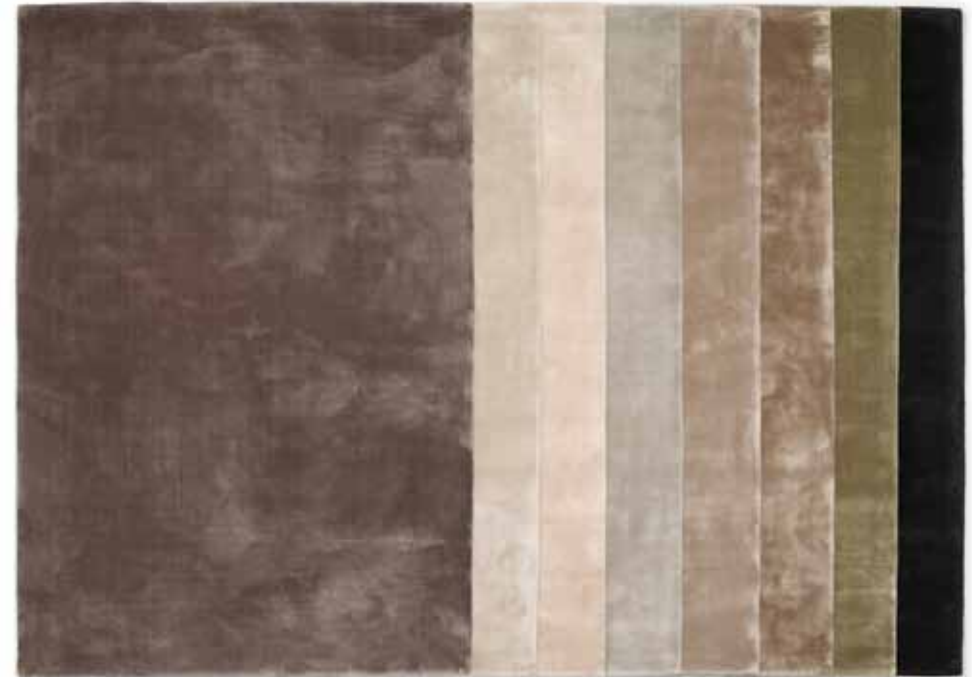
Stocked in 5 standard sizes: 120 x 180cm, 170 x 240cm, 200 x 250cm, 200 x 300cm and 250 x 350cm

Also available made-to-measure (page 36 & 37)

The pile will crush and move to reflect light in different directions and give the appearance of silk velvet

Not suitable for heavy traffic areas or where water may cause stains

Clean by dry extraction methods only



Left to right: Simla Steel Grey, Ivory, Wheat, Silver, Oatmeal, Taupe, Fern and Charcoal

◀ Simla Charcoal rug and linen bordered stair runner in Natural Weave Hexagon Ebony (pages 22 & 37)

SIMLA

Hand-woven rugs | From stock



Yarn: 100% viscose

Backing: Cotton

Gross total weight: 4500g/m²

Stocked in 5 standard sizes: 120 x 180cm, 170 x 240cm,
200 x 250cm, 200 x 300cm and 250 x 350cm

Also available made-to-measure (page 36 & 37)

The pile will crush and move to reflect light in different directions
and give the appearance of silk velvet

Not suitable for heavy traffic areas or where water may cause stains

Clean by dry extraction methods only



Left to right:
Atlantic Blue, Lavender, Grey, Eggshell, Opal, Tapenade, Cloudy Grey, Pewter, Storm and Gunmetal

Tel: +44 (0)1536 762 697

Simla Tapenade on Rajgarh Silver broadloom (page 10) >





SIMLA STRIPE

Hand-woven rugs | From stock



Yarn: 100% viscose

Backing: Cotton

Gross total weight: 4500g/m²

Stocked in 5 standard sizes:-

120 x 180cm - stripe width 25cm

170 x 240cm - stripe width 35cm

200 x 250cm - stripe width 40cm

200 x 300cm - stripe width 40cm

250 x 350cm - stripe width 50cm

Also available made-to-measure at source (page 36)

Not suitable for heavy traffic areas or where water may cause stains

Clean by dry extraction methods only



Simla Stripe - Oatmeal & Ivory



Simla Stripe - Taupe & Oatmeal



Simla Stripe - Charcoal & Steel Grey

< Simla Stripe Charcoal & Steel Grey rug on Sambar Silver broadloom (page 14)

SATPURA STRIPE

Hand-woven rugs | From stock



Yarn: 75% wool 25% viscose

Backing: Cotton

Gross total weight: 4500g/m²

Stocked in 5 standard sizes: 120 x 180cm, 170 x 240cm,
200 x 250cm, 200 x 300cm and 250 x 350cm

Also available made-to-measure (page 36 & 37)

Not suitable for bathrooms or wet areas

Clean by dry extraction methods only



Sarpura Stripe - Cream



Sarpura Stripe - Ivory



Sarpura Stripe - Silver

Tel: +44 (0)1536 762 697

Sarpura Stripe Cream >





CHUNKY VELVET

Hand-woven rugs | From stock



Yarn: 100% pure wool

Backing: Cotton

Gross total weight: 5200g/m²

Stocked in 4 standard sizes:-

120 x 180cm - border width 15cm

150 x 240cm - border width 20cm

200 x 250cm - border width 20cm

200 x 300cm - border width 20cm

Also available made-to-measure at source (page 36),
up to a maximum of 5m x 10m



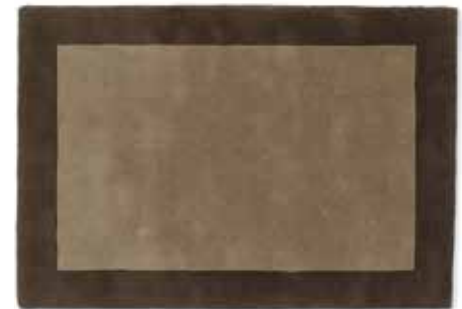
Chunky Velvet - Ivory



Chunky Velvet - Natural Grey



Chunky Velvet - Stone



Chunky Velvet - Taupe

< Chunky Velvet Stone

www.jacarandacarpets.com

VELVET BORDER

Hand-woven rugs | From stock



Yarn: 100% natural undyed wool

Backing: Cotton

Gross total weight: 3600g/m²

Stocked in 4 standard sizes:-

120 x 180cm - border width 20cm

150 x 240cm - border width 25cm

200 x 250cm - border width 30cm

200 x 300cm - border width 30cm

Also available made-to-measure at source (page 36),
up to a maximum of 5m x 5m



Velvet Border - Ivory



Velvet Border - Oatmeal



Velvet Border - Smoke



Velvet Border - Taupe

Tel: +44 (0)1536 762 697

Velvet Border Ivory▷





ABHA

Hand-woven rugs | From stock



Yarn: 100% natural undyed wool

Backing: Cotton

Gross total weight: 5000g/m²

Stocked in 3 standard sizes: 120 x 180cm,
170 x 240cm and 200 x 300cm

Also available made-to-measure (page 36 & 37)



New Abha - Ivory



New Abha - Natural Oatmeal



New Abha - Natural Grey



New Abha - Natural Charcoal

< **New Abha Ivory**

www.jacarandacarpets.com

OTTO

Hand-woven rugs | From stock



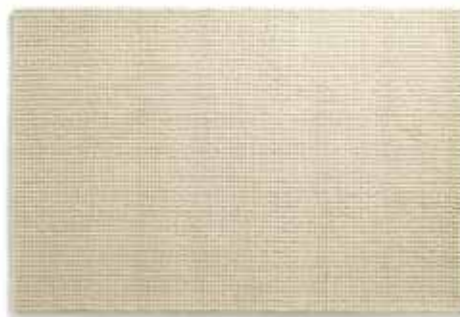
Yarn: 100% natural undyed wool

Backing: Cotton

Gross total weight: 5100g/m²

Stocked in 3 standard sizes: 120 x 180cm,
170 x 240cm and 200 x 300cm

Also available made-to-measure (page 36 & 37)



New Otto - Ivory



New Otto - Beige



New Otto - Natural Iron Grey



New Otto - Natural Chocolate



New Otto - Natural Charcoal

Tel: +44 (0)1536 762 697

New Otto Oatmeal >





PEBBLES

Hand-woven rugs | From stock



Yarn: 100% pure wool

Backing: Cotton

Gross total weight: 6500g/m²

Stocked in 4 standard sizes: 120 x 180cm,
150 x 240cm, 200 x 250cm and 200 x 300cm

Also available made-to-measure at source
(page 36), up to a maximum of 3.6 x 7m

Circular rugs not possible in this design



Pebbles - Barley



Pebbles - Ivory



Pebbles - Taupe



Pebbles - Oatmeal



Pebbles - Charcoal

◀ Pebbles Charcoal

www.jacarandacarpets.com

LUSTRE

Hand-woven rugs | From stock



Yarn: 60% wool 40% polyester

Backing: Cotton

Gross total weight: 3900g/m²

Stocked in 4 standard sizes: 120 x 180cm,
150 x 240cm, 200 x 250cm and 200 x 300cm

Also available made-to-measure at source
(page 36)



Lustre - Silver



Lustre - Ivory



Lustre - Zinc



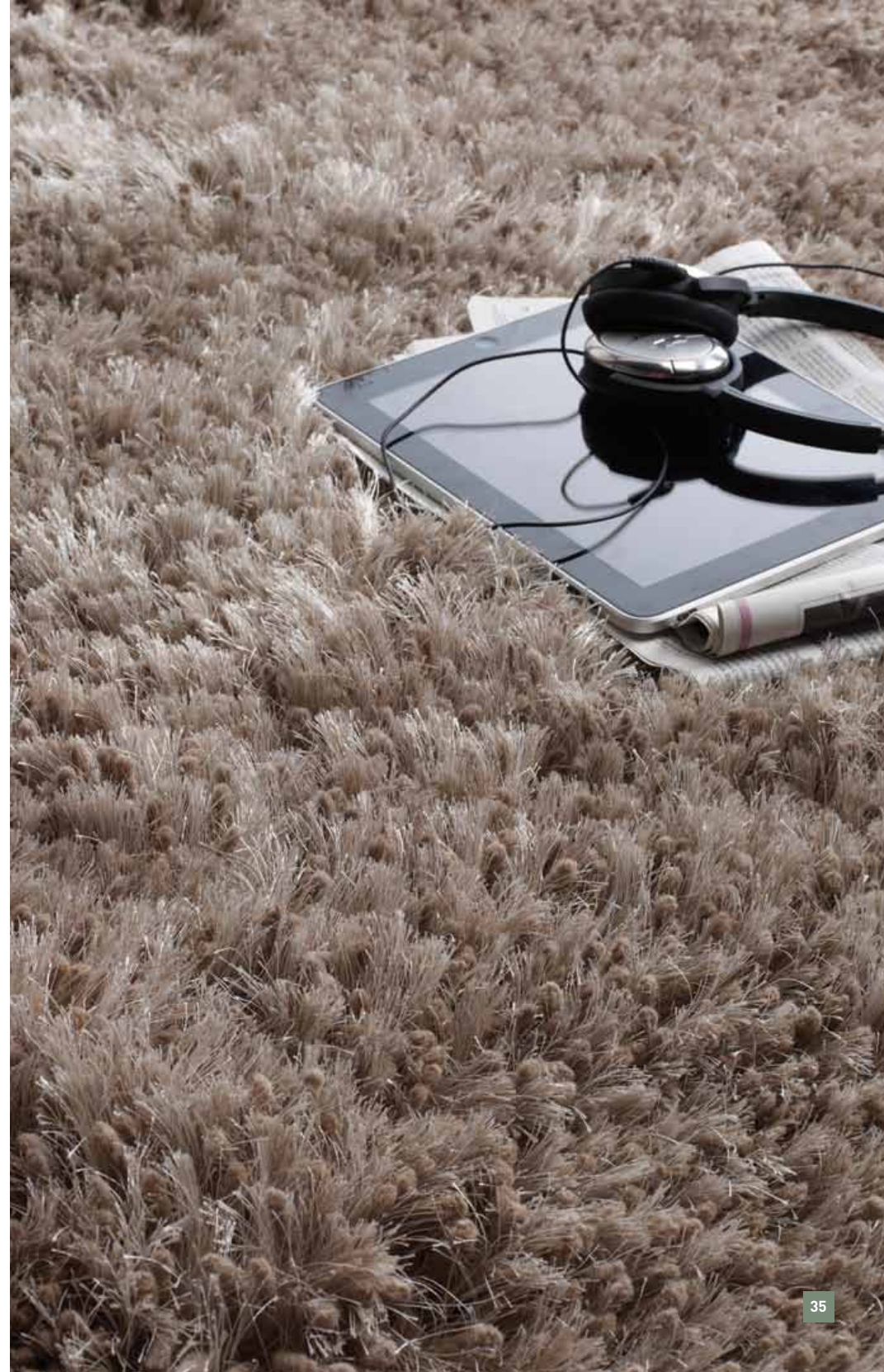
Lustre - Graphite



Lustre - Black

Tel: +44 (0)1536 762 697

Lustre Silver >



BESPOKE RUGS

Rugs | Made-to-measure at source



Jacaranda offers 2 ways to have your chosen hand-woven rugs made-to-measure. They can be manufactured at source as shown here, or made-to-measure from UK broadloom stock (page 37).

Your choice has implications for the:

- Textures you can choose
- Edging or borders available
- Backing of your rug
- Delivery lead time
- And lastly price.

You should choose to have your **bespoke rug hand-woven at source** if you want to recreate any of the designs from pages 23-35 to your own dimensions.

Jacaranda can also hand-weave at source, rugs made from all the hand-woven broadloom carpet textures on pages 3-18.



Pebbles Ivory rug, produced at source with hand-sewn edge

Rugs made from textures within the fine loomed section (pages 19-22) can be made only from UK broadloom stock, see page 37.

You can ask us to create rugs with borders or simple designs, by combining different colours within the same range. Jacaranda can combine Rajasthan and Sanskrit (page 18) into one rug, or weave a bespoke rug from 2 or more colours of Heavy Velvet (page 9). Several textures can be woven into circular or oval rugs. All are supplied with a cotton secondary backing, and hand-sewn edges as pictured on this page.

They take 12 weeks to produce on average and are priced per m² in our price list.



Velvet Border Ivory rug, produced at source with hand-sewn edge



Heavy Velvet rugs can be hand-carved on request with borders, motifs or even logos ▽



△ Velvet Border Ivory rug, produced at source with hand-sewn edge and cotton backing

BESPOKE RUGS

Rugs | Made-to-measure from UK broadloom stock

Jacaranda offers 2 ways to have your chosen hand-woven rugs made-to-measure. They can be made-to-measure from UK broadloom stock as shown here, or manufactured at source (page 36).



△ Natural Weave Hexagon Ebony (page 22) bordered in Black Linen



Simla Oatmeal with blind hemmed edge
Tape colour matched to pile

You should order your rug **made-to-measure from UK broadloom stock** if:

- You would like to choose from Jacaranda's leather, suede, cotton and linen border collection
- You would like it blind hemmed
- Timing is tight
- You have chosen a texture from the fine loomed broadloom collection (pages 19-22).

You can choose any of the textures from our selection of broadlooms on pages 6-22. You then choose your 'edging' from Jacaranda's selection of cotton, linen, leather or suede borders.



Palana Ivory with whipped edge
Yarn colour matched to pile

Alternatively you can ask Jacaranda to blind hem in tape, colour matched to your fabrics or furnishings, all broadlooms except Abha, Otto, Natural Weave, Santorini, Sicily or Sardinia. We can whip all our carpets except Abha and Otto. Viscose or TENCEL® are better blind hemmed than whipped as no wool edge can perfectly match the viscose pile. Again rugs can be circular, oval or rectangular. The backing on your rug may be cotton, jute or Actionbac depending on the construction of the broadloom you have chosen (see pages 44-47).

Jacaranda uses real leather and suede to border rugs, so splices to join hides are unavoidable. If you require splice free borders, please choose linen or cotton, or ask us to colour match 'faux' leather.



Palana Ivory with Suede Crumpet border

Delivery of these rugs is normally within 5 weeks. Jacaranda will cost these rugs at time of order, based on the following calculation.

The **bordering cost** is added to the **rug centre cost** where:

- The **bordering cost** is calculated by multiplying the linear metre price for bordering, by the length of the rug perimeter
- The **rug centre cost** is calculated by multiplying the broadloom cut length price, by the broadloom roll width, by your rug length or width (depending on the most economical way to cut it from the broadloom roll).



Sambar Taupe with double border
in Linen Salt & Mushroom



RUG UNDERLAY

Rug underlay | From stock



Construction: Polyester non woven fabrics. With clean-lift, water-based, adhesive coating

Sizes stocked: 120 x 180cm, 170 x 240cm. Cut lengths supplied at 1.19m widths

Jacaranda now stocks **TEEBAUD®**, the best non-skid underlay on the market for rugs laid over hard floors and carpet. We recommend its installation under all Jacaranda's rugs because it:

- Cushions rugs preventing fibre damage, so lengthening rug life
- Thwarts rug creep, buckling and skids
- Is so thin that it is unnoticeable
- Is reversible, with black fabric one side designed for application over carpets, and grey on the reverse for use on hard floors
- Is coated both sides in a clean lift, waterbased adhesive to grip the rug backing to carpet or floor, firmly anchoring rugs in place
- Completely harmless to all carpets, floor materials and finishes

TEEBAUD® non-skid rug underlay



Place black side down
onto carpet



Place grey side down onto
hard floors





LEATHER RUGS

LEATHER

Rugs | From stock

Rug: Leather (without hair)

Backing: Wool felt

Total weight: 3200g/m²

Usage: Domestic - please avoid heavy traffic areas

Stocked in 3 standard sizes: 120 x 180cm, 170 x 240cm and 200 x 300cm

Also available made-to-measure

Leather LT314 and LT453 can be ordered made-to-measure in any of the leathers shown on this page

If laid as wall-to-wall 'broadloom', backing should be stuck directly to floor

Vacuum regularly

Minor scratches can be removed by applying leather polish, test first on reverse of rug



Leather LT314 - Vintage Ebony



Leather LT314 - Sleek Black



Leather LT453 - Sleek Black



Leather LT453 - Vintage Russet



Leather LT314 - Vintage Russet

LEATHER

Rugs | From stock



Rug: Leather (with hair)

Backing: Wool felt

Total weight: 2200g/m²

Usage: Light domestic - please avoid areas where heavy traffic may cause hair loss

Stocked in 3 standard sizes: 120 x 180cm, 170 x 240cm and 200 x 300cm

Also available made-to-measure

The designs on this page can be ordered made-to-measure in any of the colours shown on this page. Brindle is the exception and can be made only in the hide combination shown

If laid as wall-to-wall 'broadloom', backing should be stuck directly to floor

Clean regularly with a soft brush



Leather LT521 - Grey



Leather LT780 Squares - Silver



Leather LT780 Squares - Spice



Leather LT568 - Dark Grey



Leather LT780 Squares - Chocolate



Leather LT1077 - Brindle

Leather LT1077 - Brindle ▷





HIMALAYAN HAND-KNOTTED RUGS

HIMALAYAN

Hand-knotted rugs | From stock and made-to-measure

Jacaranda's Himalayan rugs are works of art, each hand-knotted by craftsmen and completely individual.

Our weavers use traditional Tibetan rug-making techniques brought by their parents and grandparents over the Himalayas from Tibet. The weavers sit in rows at fixed looms, one or two weavers for a small rug, up to five for the largest. Each weaver works the area in front of them, making individual knots over metal rods, which are cut to create the pile. The weavers count knots as they go, following by eye, a design from the CAD drawing fixed to the loom above them. It is highly skilled work. They must each knot uniformly at the same speed (that of the slowest), so their rugs grow on average by just 10cm per day.



Jacaranda's Himalayan hand-knotted rugs are knotted by hand in Kathmandu, Nepal.

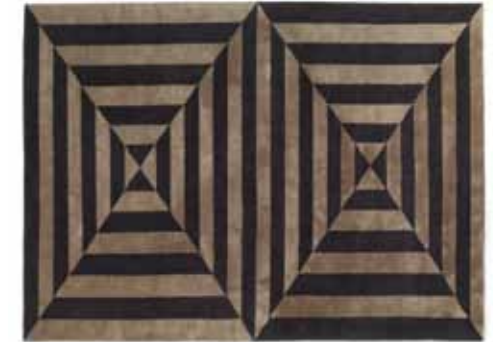
Laborious it may be, but Tibetan hand-knotting has important advantages:

- **Quality.** This is a traditional technique that creates rugs with the structure and density to withstand many years of use. The weavers knot with Chinese silk. Also with New Zealand wool and with hand-carded wool from the high plateaux of Tibet, renowned for its long, strong fibres and naturally high lanolin content which increases the lustre of these rugs with wear
- **Intricacy.** Many of Jacaranda's Himalayan rug designs are very simple by choice, but hand-knotting lends itself to complex designs. The weavers can change colour frequently, or swap between silk and wool
- **Flexibility.** You can buy a rug from stock or rugs can be any design, colour, shape or size. Jacaranda can make your designs, or re-create Jacaranda's designs to your colour scheme and dimensions. We can colour match to fabrics, wall papers, paints, pantones or poms
- **Individuality.** At Jacaranda we value the irregularity and slight quirkiness that can only be handmade. Unlike machine made, mass produced rugs, each Jacaranda Himalayan hand-knotted rug will have its own character and charm. And if we make your design, you will own a work of art that is truly unique.

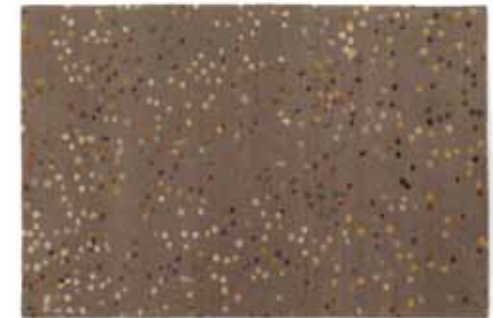
Choices, there are several to be made:

- **Design.** Yours, one of Jacaranda's stock rug designs, or a mixture of the two
- **Colours.** These can be taken from Jacaranda's designs or colour matched to materials supplied by you. Alternatively you can visit Jacaranda's head office or London showroom to choose from our Chromatone pom sets containing over 1500 colours
- **Knot count.** 60 knots per square inch gives a luxurious, chunky look. 100 knots per square inch is finer and allows more detail in the design. 120 knots per square inch is possible too
- **Yarn.** The luminosity and shine of pure Chinese silk versus the comfort and warmth of wool. Jacaranda also weaves from wool/silk blended yarns which give a silky sheen at lower prices than pure silk
- **High/low or sheared flush.** Designs often incorporate pure silk motifs against wool backgrounds. These silk sections can be sheared flush to the background or left standing proud
- **Size and shape.** Jacaranda stocks several designs at 200 x 300cm and 250 x 350cm. When these are ordered bespoke at other sizes, design elements may be duplicated, or scaled up or down, dependent on the design or customer preference.

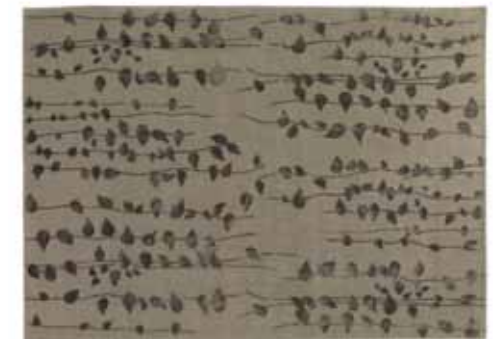
Jacaranda's Himalayan hand-knotted designs are now collected in a separate brochure, with a clearer explanation of the design possibilities and process. Please request a copy from our office or download the digital version from our website - www.jacarandacarpets.com



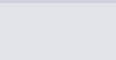
Himalayan JC1782 Geometric
From stock



New Himalayan JC5703 Dots Autumn
Made-to-measure only



Himalayan JC3812 Mala Leaf
From stock

BROADLOOM SPECIFICATION TABLE	Icons Full explanation on pages 46-47	Page no	Size	Construction	Pile material	Backing	Gross pile weight
ABHA	     	17	4 & 5m broadloom Rugs made-to-measure	Hand-woven	100% natural undyed wool	Actionbac	3800g/m ²
BAHARI	     	15	4m broadloom Rugs made-to-measure	Hand-woven	100% natural undyed wool	Actionbac	2000g/m ²
BILPAR	     	15	4m broadloom Rugs made-to-measure	Hand-woven	100% natural undyed wool	Actionbac	2600g/m ²
CHATAPUR	    	6	4 & 5m broadloom Rugs stocked in 5 sizes and made-to-measure	Hand-woven	100% viscose	Cotton	3700g/m ²
HEAVY VELVET	     	9	4 & 5m broadloom Rugs made-to-measure	Hand-woven	100% pure wool	Actionbac	3500g/m ²
KASARI VELVET	     	8	4 & 5m broadloom Rugs made-to-measure	Hand-woven	100% natural undyed wool	Cotton	2700g/m ²
NATURAL WEAVE HEXAGON	      	22	4m broadloom Rugs made-to-measure	Woven	100% New Zealand wool	Pure jute	1400g/m ²
NATURAL WEAVE SQUARE	      	22	4m broadloom Rugs made-to-measure	Woven	100% New Zealand wool	Pure jute	1800g/m ²
OTTO	     	17	4 & 5m broadloom Rugs made-to-measure	Hand-woven	100% natural undyed wool	Actionbac	3500g/m ²
PALANA	     	16	4 & 5m broadloom Rugs made-to-measure	Hand-woven	100% pure wool	Actionbac	2500g/m ²
PATRAN	     	16	4 & 5m broadloom Rugs made-to-measure	Hand-woven	100% pure wool	Actionbac	3000g/m ²
RAJASTHAN	     	18	4 & 5m broadloom Rugs made-to-measure	Hand-woven	100% natural undyed wool	Jute	2700g/m ²
RAJGARH	     	10	4 & 5m broadloom Rugs made-to-measure	Hand-woven	60% viscose 40% wool	Actionbac	3200g/m ²
RAMPUR	     	11	4 & 5m broadloom Rugs made-to-measure	Hand-woven	60% viscose 40% wool	Actionbac	2200g/m ²
RANILA	     	11	4 & 5m broadloom Rugs made-to-measure	Hand-woven	60% viscose 40% wool	Actionbac	2200g/m ²
SALAMANCA WILTON	     	21	4m broadloom Rugs made-to-measure	Wilton weave	100% pure wool	N/A	1410g/m ²
SAMBAR	     	14	4m broadloom, 5m for orders over 50m ² Rugs made-to-measure	Hand-woven	100% pure wool	Actionbac	2500g/m ²

Carpet thickness approx	Stripe direction	Use classification	Comfort rating EN 1307	Castor chair suitability	Stairs suitability EN 1963	Tog rating	Static electric charge ISO 6356	Colourfastness to:					Burning behaviour
								Light ISO 105 B02	Rubbing dry	Rubbing wet	Water ISO 105 E01	Water stains	
									ISO 105 X12				
17mm		EN 1307 Class 33 Heavy contract	Class 5	No	No	Not tested	Anti-static	6-7	4-5	3-4	4	ISO 105 E01 4-5	BS EN 13501-1:2002 Class Bfl-s1
11mm	Across roll	EN 1307 Class 23/31 Heavy domestic, light contract	Class 5	No	Domestic use	1.46	Anti-static	4-5	4-5	4-5	4	EN 15115 4	BS EN 13501-1:2002 Class Cfl-s1
13mm		EN 1307 Class 23/31 Heavy domestic, light contract	Class 5	No	Domestic use	2.66	Anti-static	4-5	4-5	4-5	4	EN 15115 4	BS EN 13501-1:2002 Class Cfl-s1
11mm	Across roll	EN 1307 Class 21 Light domestic	Class 5	No	No	1.01	Anti-static	5	4-5	4-5	3	EN 15115 2	BS EN 13501-1:2002 Class Efl
15mm		EN 1307 Class 33 Heavy contract	Class 5	No	Domestic use	Not tested	Anti-static	4	4-5	4-5	3-4	ISO 105 E01 5	BS EN 13501-1:2002 Class Cfl-s1
15mm		EN 1307 Class 23/32 Heavy domestic, general contract	Class 5	No	Domestic use	Not tested	Anti-static	6	4-5	4	3-4	EN 1307/G 4-5	BS EN 13501-1:2002 Class Cfl-s1
9mm		EN 1307 Class 22+/31 General domestic, moderate contract	Class 1	EN 985 a, Intensive use	Domestic use	1.16	Anti-static	6	4-5	4-5	4	EN 1307/F 5	EN 13501:2007 Class Cfl-s1
9mm		EN 1307 Class 23/32 Heavy domestic, general contract	Class 1	EN 985 a, Intensive use	Domestic use	0.86	Anti-static	6	4-5	4-5	4	EN 1307/F 5	EN 13501:2007 Class Bfl-s1
17mm		EN 1307 Class 33 Heavy contract	Class 5	No	No	Not tested	Anti-static	6-7	4-5	4-5	2-3	ISO 105 E01 4-5	BS EN 13501-1:2002 Class Bfl-s1
14mm		EN 1307 Class 33 Heavy domestic, light contract	Class 5	No	Intensive use	Not tested	Anti-static	5	4-5	4-5	4	ISO 105 E01 4-5	BS EN 13501-1:2002 Class Cfl-s1
14mm		EN 1307 Class 33 Heavy domestic, light contract	Class 5	No	No	Not tested	Anti-static	5	4-5	4-5	4-5	EN 15115 4-5	BS EN 13501-1:2002 Class Cfl-s1
12mm	Across roll	EN 1307 Class 23/32 Heavy domestic, general contract	Class 5	No	Domestic use	2.84	Anti-static	5-6	4-5	4	3-4	EN 1307/G 3-4	BS EN 13501-1:2002 Class Cfl-s1
13mm		EN 1307 Class 23/32 Heavy domestic, general contract	Class 5	No	Domestic use	Not tested	Anti-static	4-5	4-5	4	3	EN 15115 2	BS EN 13501-1:2002 Class Efl
12mm	Across roll	EN 1307 Class 23/32 Heavy domestic, general contract	Class 5	No	Domestic use	1.95	Anti-static	6	4-5	4	3	ISO 105 E01 3-4	BS EN 13501-1:2002 Class Efl
12mm	Across roll	EN 1307 Class 23/32 Heavy domestic, general contract	Class 5	No	Domestic use	1.95	Anti-static	6	4-5	4	3	ISO 105 E01 3-4	BS EN 13501-1:2002 Class Efl
9mm	Across roll	EN 1307 Class 33 Heavy contract	Class 4	No	Domestic use	1.91	Anti-static	5	4-5	4-5	4-5	BS EN 15115 5	BS EN 13501-1:2002 Bfl-s1
13mm		EN 1307 Class 33 Heavy domestic, light contract	Class 5	No	Domestic use	2.67	Anti-static	6	4-5	4-5	4-5	EN 15115 4-5	BS EN 13501-1:2002 Class Cfl-s1

BROADLOOM SPECIFICATION TABLE	Icons Full explanation below	Page no	Size	Construction	Pile material	Backing	Gross pile weight
SAMODE							

Carpet thickness approx	Stripe direction	Use classification	Comfort rating EN 1307	Castor chair suitability	Stairs suitability EN 1963	Tog rating	Static electric charge ISO 6356	Colourfastness to:					Burning behaviour
								Light ISO 105 B02			Water ISO 105 E01	Water stains	
									Rubbing dry ISO 105 X12	Rubbing wet			
12mm	Across roll	EN 1307 Class 33 Heavy domestic, light contract	Class 5	No	Domestic use	2.44	Anti-static	6	4-5	4-5	4-5	EN 15115 4-5	BS EN 13501-1:2002 Class Cfl-s1
12mm	Across roll	EN 1307 Class 23/32 Heavy domestic, general contract	Class 5	No	Domestic use	2.84	Anti-static	5-6	4-5	4	3-4	EN 1307/G 3-4	BS EN 13501-1:2002 Class Cfl-s1
6mm		EN 15114 Class 22+ /31 General domestic, moderate contract	EN 15114 Class 1	EN 985 a, Intensive use	Domestic use	0.07	Anti-static						EN 13501-1:2007 Class Bfl-s1
10mm	Across roll	EN 1307 Class 23/32 Heavy domestic, general contract	Class 5	No	Domestic use	0.72	Anti-static	6	5	5	5	BS EN 15115 4	BS EN 13501-1:2002 Class Efl
6mm		EN 15114 Class 22+ /31 General domestic, moderate contract	EN 15114 Class 1	No	Domestic use	0.10	Anti-static						EN 13501-1:2007 Class Bfl-s1
17mm	Along roll	EN 1307 Class 22+ /31 General domestic, moderate contract	Class 5	No	Domestic use	Not tested	Anti-static	5	5	4-5	5	EN1307/EN15115 2-3	EN 13501:2007 Class Dfl-s1
9mm		EN 1307 Class 33 Heavy contract	Class 4	No	Domestic use	1.33	Anti-static	4	4-5	4-5	4-5	BS EN 15115 4-5	BS EN 13501-1:2002 Bfl-s1
6mm		EN 15114 Class 22+ /31 General domestic, moderate contract	EN 15114 Class 1	No	Domestic use	0.09	Anti-static						EN 13501-1:2007 Class Bfl-s1
11mm		EN 1307 Class 21 Light domestic	Class 4	No	No	0.71	Anti-static	3-4	5	4-5	3	EN1307/EN15115 2	EN 13501:2007 Class Efl
14mm	Along roll	EN 1307 Class 22+ General domestic	Class 5	No	Domestic use	Not tested	Anti-static	5	4-5	4-5	4-5	EN15115 4-5	BS EN 13501-1:2002 Class Cfl-s1
10mm	Across roll	EN 1307 Class 33 Heavy contract	Class 5	No	Intensive use	1.4	Anti-static	6	5	5	5	BS EN 15115 5	BS EN 13501-1:2002 Class Cfl-s1



CASTOR CHAIR RATING

Castor chairs cause extreme stress and heavy wear to carpets. Only carpets fulfilling higher requirements to test EN985 may use this symbol



ANTISTATIC

This icon is used if the measured body voltage is lower than 2kV after walking



BURNING BEHAVIOUR

The requirements for fire behaviour for building products are strictly regulated. Fire categories for textiles vary from F up to B. Classes C_{fl} and B_{fl} are often required for public or commercial buildings but rules vary between countries and should always be checked by the specifier. Classes D to B are subdivided with smoke density for S₁ lower than for S₂



GUT

A stringent raft of tests for emissions, chemicals and environmental issues. For more information please visit www.pro-dis.info/about_gut.html

COLOURFASTNESS

Carpets are tested for colourfastness to light, rubbing and water. For light tests, results can vary from 8 for no change to 1 for severe fading. For rubbing and water tests, 5 represents no change, down to 1 for severe change

TOG

This is a measure of thermal resistance and is used as an indication of suitability for use over underfloor heating, see explanation on page 48.

All test values and icons result from tests carried out to British or European safety standards, commissioned by Jacaranda from independent, accredited testing houses.

All Jacaranda's broadlooms carry the CE mark, and Declaration of Performance documents (DOP's) are available for download from our website www.jacarandacarpets.com.

CHOOSING AND ORDERING

Jacaranda supplies broadloom carpets, rugs and runners to retailers and interior designers. If you are a trade customer please contact our office at the address on the back cover, for orders and quotes. If you are a consumer do please make contact too, as we can put you in touch with one of our trade customers in your local area.

When choosing your carpet, please consider the following:

Use classification and icons

The icons throughout the broadloom section of this brochure give important information as to recommended usage for each broadloom range. For an explanation of these icons please see page 46-47.

Seams

Please consider the position of any seams, especially when ordering hand-woven broadloom. It may not always be possible to perfectly align the lines in cut & loop hand-woven broadlooms. A light shear may be necessary along seams on hand-woven velvets. For wide rooms, seams can be avoided by choosing one of the hand-woven textures stocked in 5m width.

Pets and pulled loops

Cats and dogs can 'pull' loops in loop-pile or cut & loop carpets. Owners of very 'active' pets could consider one of Jacaranda's cut-pile designs instead.

Fading

Natural fibres will fade over time and this may be accelerated by exposure to strong light. Natural undyed colours may fade more than dyed ones. This should be taken into consideration when choosing floor coverings for areas that experience strong light or direct sunlight.

Pile reversal

All velvet carpets may occasionally show pile reversal. This is a natural phenomenon resulting from local conditions where a carpet is laid, causing sections of carpet pile to change direction, so reflecting the light differently. Despite a great deal of research, no common manufacturing process has been found to cause pile reversal so it is not a manufacturing fault. Pile reversal may change appearance but will not affect wear. In some cases, professional carpet cleaning companies are able to reset the pile.



Colour matching 'poms'

Underfloor heating

Most carpets can be used over underfloor heating systems, however wool is a thermal insulator and will slow the transfer of heat from floor to the air above, the thicker the carpet the greater the thermal resistance which is measured as 'tog'.

Research by the Carpet Foundation has found that carpets and underlays with a combined thermal resistance of less than 2.5 togs do allow underfloor systems to work efficiently. Also that when tested in life sized chambers, the thermal resistance is lower than in laboratory tests i.e. carpet and underlay combinations with laboratory tested values of 3.5 togs, perform in real life situations closer to 2.5 togs.

Jacaranda has laboratory tested the thinner and less dense carpets in our range and their tog values which vary from 0.07 to 2.84 are listed on page 44-47. We believe that underfloor heating correctly installed and maintained will not affect your Jacaranda carpet, but carpets may slow heat transfer depending on their thickness and density. You should consult your heating manufacturer about recommended tog ratings, and your carpet fitter as to the best underlay to use.

Colour matching

Jacaranda can colour match the Himalayan hand-knotted rugs on pages 42-43. For orders over 50m² we can also colour match several broadlooms: Heavy Velvet (page 9), Rajgarh (page 10) Rampur and Ranilla (page 11).

Colours can be matched to fabrics, paint samples and pantones or by using the chromatone pom sets held at our head office and London

showroom. There is a small 'matching charge' so that Jacaranda can provide colour swatches for customer approval. Production times for colour matched products are 3 months on average, but Jacaranda will confirm lead time and price for each individual order.

At point of order:

Stock reservation

Jacaranda is happy to reserve stock for 48 hours.

Size tolerance

While every effort is made to manufacture to the correct size, slight variations are unavoidable and natural fibres can shrink as they move to a different climate. For broadloom we advise that the customer order 3% more length than is required. Hand-woven rug sizes may vary by up to $\pm 2.5\%$ and Himalayan by up to $\pm 5\%$.

Colour variation

As with all natural products, colours may vary slightly between production batches. Please state at time of order where carpet cuts are to adjoin, so ensuring that those cuts are supplied from the same colour batch. 4m and 5m broadloom rolls are likely to come from different dye batches. The colour of samples may also change over time especially if exposed to strong sunlight. If an exact colour match is essential, please reserve stock and ask Jacaranda to send a cutting from that batch, we will be happy to oblige.

DELIVERY AND FITTING

Delivery

Our standard delivery times within mainland Britain are:

- 5 working days for stock rugs
- 7 working days approx for broadloom
- An average of 5 weeks for rugs & runners made-to-measure from UK broadloom stock
- An average of 12 weeks for products colour matched or made-to-measure at source
- 16 weeks for Himalayan rugs (longer for larger or complex rugs)
- For all bespoke products Jacaranda will confirm lead times at the point of order.

All standard deliveries must be to a business address with good access for HGV's. For broadloom deliveries, the driver will require help with unloading and delivery is to the ground floor access point only.

Please call our office for prices and times for 'express' or 'special' deliveries within Britain, as well as deliveries to Europe and further afield.

Inspection

Our labour intensive processes are integral to the creation of our 'characterful' textures and wonderful natural colours. They cannot and do not set out to mirror the uniformity of 'machine made' carpet. Any slight variations in colour and weave in our hand-woven products are part of their 'handmade character' rather than 'faults'.

At Jacaranda we take quality control very seriously and each roll or rug is checked and rechecked. Despite our best efforts however the odd genuine error does slip through and strange things can happen in transit.

Please ensure that all products are checked and any problems reported within 48 hours of delivery. If your floorcovering arrives with damaged packaging, please note the damage on the delivery note before signing for receipt. If you have any doubts about the product, please phone our office before fitting. Jacaranda cannot take responsibility for problems reported after the carpet has been cut and fitted.



Salamanca Wilton Ivory (page 21)

Fitting broadlooms

Please fit carpets over a good quality 'combi' underlay which combines a felt base layer with rubber crumb on top (unless using a double stick method). Stretch all carpets onto double grippers. Do not use power stretchers which can damage any carpets, and no knee kickers should be used for loop pile or cut & loop styles. All cut edges should be sealed using seaming cement and heat seaming tape should be used for all seams and joins. A light shear may be necessary along seams for some velvets. Do not apply self-adhesive carpet protector which can attach to pile, then pull threads when removed. Any variations to standard fitting instructions appear on the relevant product page.

Rug underlay

This makes rugs more luxurious to walk on, can reduce wear, lengthen rug life and reduce rug movement or 'creep'. Jacaranda offers high quality 'non-skid' underlay in standard packages or cut to size. Customers can choose whether to fit underlay flush to rug edge or 5-10cm smaller.

In heavy traffic locations, rotate rug regularly to spread wear and extend life.

See page 38 for further information.

CARPET CARE

Stain proofing treatments

When deciding whether or not to stain proof your new carpet, please consider that stain proof treatments:

- Should be applied by a professional company with a good reputation
- Must be reapplied at regular intervals
- Can slow the rate of soiling and buy extra time to deal with spillages
- But can never offer complete protection
- And can lead to a false sense of security

It is normal for new wool carpets to 'shed' fibres especially where footfall is heaviest. If protective chemicals are lost with these fibres, carpets can soil faster in heavy traffic areas leading to uneven appearance.

Regular maintenance

Vacuum carpets regularly using an upright cleaner on **cut pile carpets**, or a cylinder machine with a smooth nozzle on any **carpet with loops**.

Avoid using all cleaning chemicals sold for home use, some of which can discolour carpets. Detergent residue can become sticky when dry and subsequently attract dirt.

For an overall clean we recommend a dry extraction method carried out by a professional cleaning company.

Leather floor coverings are better swept with a soft brush.

Spillages and stains

Act fast to pick up any solids and to blot up liquid with plain absorbent paper. Blot gently, changing paper as necessary. Do not rub or scrub as this can 'burst' the pile surface causing permanent damage. Leave the pile laying in the natural pile direction or restore gently to correct direction using a clean clothes brush. Leave to dry naturally.

For residual stains:

For **wool carpets** only, dilute any remaining residue or stain with cold water (never hot) on a clean cloth, then blot and dry as above. Repeat as necessary. For unusual or stubborn stains always seek professional advice from a reputable cleaning company or visit www.woolsafe.org for advice. Avoid carpet cleaning chemicals sold for home use, which can discolour carpets or leave a dirt attracting, sticky residue.

Viscose carpets are more delicate than wool. Water changes the texture of the viscose, causing the pile to reflect light differently to give the appearance of a stain. Do not add water and do not rub or brush the pile. For all stains consult a professional carpet cleaner straight away. They should recommend cleaning of the entire carpet (rather than spot treatment) using a dry extraction rather than a wet cleaning method.

The **TENCEL®** yarn used for Jacaranda's new Santushti broadloom has the same beautiful lustre as viscose but is more hard-wearing and better to clean. Water spills will not affect its texture, and if they leave a slight yellow ring, this should disappear with time and wear. **TENCEL®** can be professionally cleaned with care.

Jacaranda aims to maintain on their website at www.jacarandacarpets.com, a list of reputable, professional carpet cleaners in the UK and abroad.



Heavy Velvet Dark Grey (page 9)

Shedding

All wool cut-pile carpets will shed fibres when new to create fluff. This is normal, not related to quality, and will not affect appearance or durability of your carpet. It is simply wool fibres released from the yarn ends where they are cut to create the pile. Vacuum regularly and shedding will soon cease.

Sprouting or pulled loops

Uneven tufts can sometimes occur in hand-woven carpets. Dogs, cats or stiletto heels can catch and pull loops proud of the pile. Carefully cut these tufts or loops with sharp scissors, do not pull as you may damage the carpet.

Crushing

Furniture can depress or crush carpet pile over time. This effect can be reduced by occasionally re-arranging heavy furniture so that the weight is not concentrated in one place.



27



17



13



9



43



32



24



27



9



22



11

Credits - We wish to thank several companies for lending furniture for photography:

Front Cover Santushti Platinum: Sofa: Carmel at Poliform www.poliformuk.com · Floor lamp from Original BTC www.originalbtc.com · Green velvet cushions from William Yeoward www.williamyeoward.com

Page 3 Otto Iron Grey: Sofa: Tribeca at Poliform www.poliformuk.com · Cushions from William Yeoward www.williamyeoward.com

Page 9 Heavy Velvet Atlantic Blue: Chair from Sofa.com www.sofa.com · Velvet cushions from William Yeoward www.williamyeoward.com

Page 19 Seville Oatmeal: Bedside table from Chelsea Textiles www.chelseatextiles.com

Page 24 Chatapur Night: Tray from William Yeoward www.williamyeoward.com

Page 32 Abha Ivory: Tray from William Yeoward www.williamyeoward.com

Page 49 Salamanca Ivory: Yellow chair from Oliver Bonas www.oliverbonas.com



37

Jacaranda Carpets Limited

1 Cockerel Rise, Magnetic Park, Desborough, Northamptonshire NN14 2WE, UK

Tel: +44 (0)1536 762 697 **Email:** sales@jacarandacarpets.com **Web:** www.jacarandacarpets.com

Jacaranda Showroom at Design Centre Chelsea Harbour, Unit 2/9, 2nd Floor South Dome, London SW10 0XE **Tel:** +44 (0)207 351 6496

For International distributors please visit www.jacarandacarpets.com



English version 2014