

2015



VADENECUM



# Index

I.P.F. WOOD FLOORING	4
I.P.F. COLLECTIONS	6
PROCESSING STAGES-FINISH	10
PROCESSING TIMES	12
MAINTAINANCE / PERIODICITY	14
SUBFLOOR DEFINITION AND REQUIREMENT	16
MAINTENANCE OF A PRE-FINISHED WOOD FLOORING	20
PRODUCT SHEET (fac-simile)	22
THE I.P.F. WORLD	26
CERTIFICATIONS	28

Dear Customer,

our passion for the wood has been inspiring us for over twenty-five years and this manual has been especially thought to help you increase your knowledge of the IPF world. It is an expression of our appreciation for your preference and trust and for making your own contribution to the growth of our company.

IPF has been able to satisfy consumer market demands for style and quality while also adhering to strict environmental guidelines. Our handcrafted and prefinished flooring meets with the highest standards of craftsmanship.

IPF's in-house master artisans excel at crafting customized floors with almost limitless possibilities for color and finish. Each single raw board is handled by the IPF team and brushed, hand-scraped, stained and finished to get to a one-of-a-kind wood flooring.

Furthermore our wood floorings are affordable, easy to maintain, environmentally sound. From their sustainable source to their healthy qualities indoors they make a smart choice for the world's environment and the environment in your own home.

Alfredo Cesarini

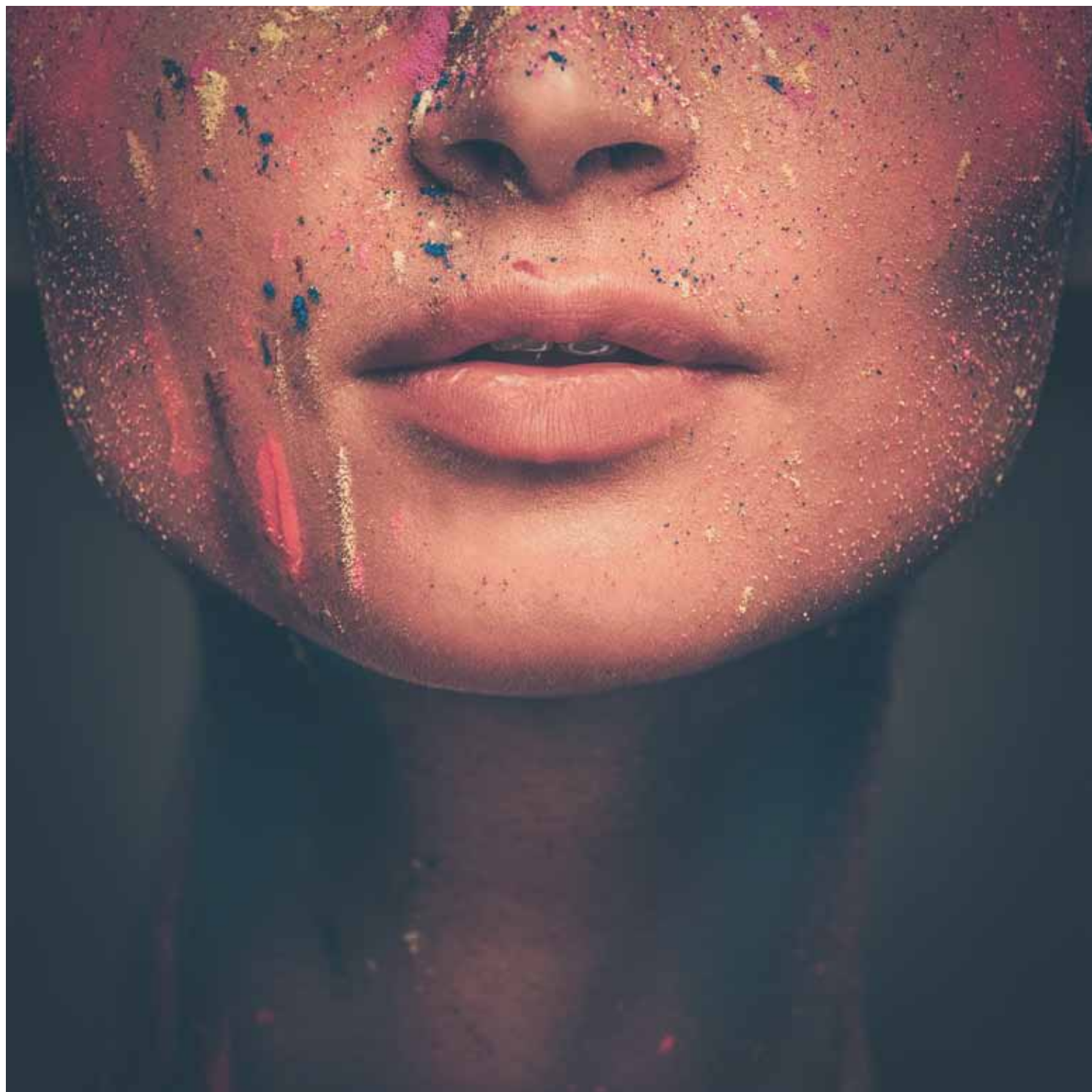
# I.P.F. WOOD FLOORINGS:

## DIMENSIONS and STRUCTURES

Structure	Size	Pricelist	Thickness mm	Width mm	Lenght mm	Noble wood mm	Subfloor	Back	Installation **
Solid wood	DOGA 15 Oak	IPF	15	120/140	500/1500	15,00	-	-	Bi-component adhesive or similar
	DOGA 15 Teak Asia	IPF	15	90	500/1200	15,00	-	-	Bi-component adhesive or similar
	DOGA 20	IPF	21	150	500/1600	21,00	-	-	Bi-component adhesive or similar
2 layers	LISTO 70/3	IPF smart solution	10,0/3	70	490	3,00 *	-	Solid Fir	Bi-component adhesive or similar
	LISTO 70/4	IPF and IPF smart solution	10,5/4	70	490	4,00 *	-	Solid Fir	Bi-component adhesive or similar
	LISTO 90/4	IPF smart solution	10,0/4	90	500/1200	4,00 *	-	Solid Fir	Bi-component adhesive or similar
	LISTO 120/3	IPF smart solution	10,0/4	120	1000/1400	3,00 *	-	Multilayer Birch	Bi-component adhesive or similar
	LISTO 120/4	IPF smart solution	10,0/4	120	500/1200	4,00 *	-	Multilayer Birch	Bi-component adhesive or similar
	PLANCIA M	IPF and IPF smart solution	10,5/4,2	150	1000/1400	4,20 *	-	Multilayer Birch	Bi-component adhesive or similar/Floating
	PLANCIA L TOP	IPF and IPF smart solution	15,0/4,2	190	1700/2000	4,20 *	-	Multilayer Birch	Bi-component adhesive or similar/Floating
	PLANCIA TOP 14 3L	IPF	14,0/5,2	120/140/180	1000/2100	5,20 *	-	Multilayer Birch	Bi-component adhesive or similar/Floating
3 layers	PLANCIA L	IPF and IPF smart solution	15,0/4	190	900/1900	4,00 *	Solid Fir	Plywood birch and similar	Bi-component adhesive or similar/Floating
	PLANCIA 3L	IPF	15,0/4	148/190/220	500/2200	4,00 *	Solid Fir	Plywood birch and similar	Bi-component adhesive or similar/Floating
	PLANCIA MP	IPF smart solution	15,0/3,5	190	830/1860	3,50 *	Solid Fir	Plywood popplar and similar	Bi-component adhesive or similar/Floating
	PLANCIA TOP 15 3XL	IPF	15,0/5,2	140/180/220	1000/2400	5,20 *	Solid Fir	Solid wood	Bi-component adhesive or similar/Floating
	PLANCIA TOP 20 3XL	IPF	20,0/5,2	180/250/300	1000/2900	5,20 *	Solid Fir	Solid wood	Bi-component adhesive or similar/Floating

\* Nominal dimension  
 \*\* Before proceeding with the installation, check carefully the subfloor's conditions





# I.P.F. COLLECTIONS (FLOORS)

## I.P.F. COLLECTIONS:

Collection <b>I Classici:</b>	Prefinished parquet flooring, bevelled, hand brushed and hand treated for wax effect.
Collection <b>Camelot:</b>	Prefinished parquet flooring, bevelled, no brushed, hand treated with reagents for final wax effect.
Collection <b>Doghe del Mastro:</b>	Prefinished parquet flooring, bevelled, hand planed and aged, wax effect treatment.
Collection <b>Segato a mano:</b>	Prefinished parquet flooring, bevelled, brushed, hand sawn, wax effect treatment.
Collection <b>Mater Terra:</b>	Prefinished parquet flooring, bevelled 2 layers (plywood) or 3 layers (oak or plywood backing). Noble wood layer mm. 5,2. Supplied in three assorted widths.
Collection <b>Tavole di Mastro Marino:</b>	Solid wood pre-finished modules 2 layers (plywood), all the elements are bevelled, brushed and hand treated with wax effect. Strictly handmade.
Collection <b>Shabby Chic:</b>	Prefinished parquet, bevelled, and hand brushed and treated with restorable natural oil.
Collection <b>Arcobaleno:</b>	Prefinished parquet, bevelled, hand brushed, hand lacquered. Wax effect treatment.
Collection <b>Chic:</b>	Prefinished parquet flooring, bevelled, and dyed with the colors of "architecture". Wax effect treatment.
Collection <b>I Bianchi:</b>	Prefinished parquet, bevelled, brushed and hand dyed. (Wax effect treatment)
Collection <b>I Neri:</b>	Prefinished parquet bevelled, brushed and hand dyed.
Collection <b>Free Time:</b>	Wood flooring for outdoor.
Collection <b>Country Club:</b>	Decorative panels for wall cladding, hand made with reclaimed wood (fossil wood) assembled on birch plywood.
Collection <b>Le Perle in Legno:</b>	Waterproof solid or three layers wood profiles created to be coupled with ceramics. <b>Boiserie Minerva:</b> Waterproofed solid wood base and capital to be coupled with marble, ceramics, etc. <b>Boiserie Afrodite:</b> Waterproofed solid wood base and capital and three-layers boards.
Collection <b>Touch:</b>	A brand new concept dedicated to the bathroom.

#### I.P.F. PLUS + COLLECTIONS:

Collection <b>Afrika Style:</b>	Prefinished parquet, bevelled, brushed and hand decorated. Wax effect treatment on the surface.
Collection <b>Country Inglese:</b>	Prefinished parquet bevelled and hand decorated. Treated for coat effect.
Collection <b>Loft:</b>	Prefinished parquet, bevelled, brushed and hand decorated and sanded. Treated for... unique effect.

#### I.P.F. SMART SOLUTION COLLECTIONS (Floors):

Collection <b>Happy Hour:</b>	Engineered flooring (two layers); 7 coats UV. Sides not bevelled.
Collection <b>Barrique:</b>	Engineered flooring (two layers); 7 coats UV oil. Slightly brushed, sides not bevelled.
Collection <b>Fusion:</b>	Engineered flooring (two layers); 7 coats UV. Sawn marked/brushed. Sides not bevelled.
Collection <b>Antique Oak Collection UV:</b>	Engineered flooring (two layers); 7 coats UV finish. Brushed, sides bevelled.
Collection <b>Antique Oak Collection OIL:</b>	Engineered flooring (two-three layers), natural oil/oxidative oil finish. Slightly brushed, bevelled.
Collection <b>Lounge UV:</b>	Engineered flooring (three layers), 7 coats UV finish, brushed, longside bevelled.
Collection <b>Lounge ART:</b>	Engineered flooring (three layers), wax effect finish. Brushed/hand planed. longside bevelled.
Collection <b>Marco Polo:</b>	Engineered flooring (three layers), oxidative oil finish. Slightly brushed or distressed. Bevelled.

# IPF PLUS\_IPF PLUS COLLECTION

(Floors)

8

COLLECTION	FINISH	SOLID WOOD		2 LAYERS				3 LAYERS			
		DOGA 15	DOGA 20	LISTO 70/4	PLANCIA M	PLANCIA L TOP	PLANCIA TOP 14 3L	PLANCIA L	PLANCIA 3L	PLANCIA TOP 15 3XL	PLANCIA TOP 20 3XL
I CLASSICI	WAX EFFECT	*	*	*	*	*	-	*	*	-	-
CAMELOT	OXIDATIVE OIL	-	*	-	*	*	-	-	-	-	-
DOGHE DEL MASTRO	WAX EFFECT	-	-	-	-	-	-	*	*	-	-
SEGATO A MANO	WAX EFFECT	-	-	-	-	-	-	*	-	-	-
MATER TERRA	WAX EFFECT	-	-	-	-	-	*	-	-	*	*
SHABBY CHIC	NATURAL OIL	-	-	-	*	*	-	*	-	-	-
ARCOBALENO	WAX EFFECT	-	-	*	*	*	-	*	-	-	-
CHIC	WAX EFFECT	-	-	*	*	-	-	*	-	-	-
I BIANCHI	WAX EFFECT	-	-	-	*	*	-	*	-	-	-
I NERI	WAX EFFECT	-	-	-	*	*	-	*	-	-	-
AFRIKA STYLE	WAX EFFECT	-	-	-	-	-	-	*	-	-	-
COUNTRY INGLESE	COAT EFFECT	-	-	-	-	-	-	*	-	-	-
LOFT	WAX EFFECT	-	-	-	-	-	-	*	-	-	-

For our collection TAVOLE DI MASTRO MARINO (decorated and herringbone wood floorings) check dimensions and structure with our commercial department.

Our collection TAVOLE DI MASTRO MARINO could be realized in solid wood two layers.

FREE TIME, the coverings (COUNTRY CLUB and LE PERLE IN LEGNO) and TOUCH check dimensions and structure with our commercial department.



# IPF COLLECTIONS SMART SOLUTION

## (Floors)

COLLECTION	FINISH	2 LAYERS							3 LAYERS	
		LISTO 70/3	LISTO 70/4	LISTO 90/4	LISTO 120/3	LISTO 120/4	PLANCIA M	PLANCIA L TOP	PLANCIA L	PLANCIA MP
HAPPY HOUR	7 UV COATS	*	*	*	-	*	-	-	-	-
BARRIQUE	7 UV COATS (OIL)	*	-	-	*	-	-	-	-	-
FUSION	7 UV COATS	*	-	-	-	-	*	-	-	-
ANTIQUE OAK COLLECTION UV	7 UV COATS	-	-	-	-	-	*	*	-	-
ANTIQUE OAK COLLECTION OIL	NATURAL OIL OXIDATIVE OIL	-	-	-	-	-	*	*	*	-
LOUNGE UV	7 UV COATS	-	-	-	-	-	-	-	*	-
LOUNGE ART	WAX EFFECT	-	-	-	-	-	-	-	*	-
MARCO POLO	OXIDATIVE OIL	-	-	-	-	-	-	-	-	*

# IPF PROCESSING STAGES

The high quality and reliability of IPF collections are guaranteed by a detailed and selective working process based on strict criteria:

- 1) Pre-drying
- 2) Drying
- 3) Seasoning
- 4) Profiling
- 5) Surface treatment (main characteristic for all our collections, in particular IPF and IPF PLUS +)

**1/2) Pre-drying and drying** takes about 5/6 months. This slow drying cycle (max temperature 35°C) is aimed to reduce dimensional and obtain a clear product tannins and minerals free.

**3) During seasoning** from 15 to 18 months, wood unloads its internal tensions and reach that dimensional balance which will be kept during waxing and mostly after installation.

Being an already varnished pre-finished flooring, even in solid wood and of big sizes interventions such as plastering and levelling to eliminate potential cracks are not possible at the job site thus we must guarantee an exceptional quality and stability.

**Any of the IPF collections, especially the solid wood ones, must respect our quality criteria without exception. Only strict compliance with the “rules of wood” can lead to a perfect product.**

**4) Profiling** cleans the planks out from deformations occurred while seasoning and prepares the surface at best to be hand waxed.

7 coats/UV or UV OIL in the IPF SMART SOLUTION Collections (except for LOUNGE ART, 7 coats wax effect\_hand made).

**15/17coats in the collection IPF and IPF PLUS (100% handmade).**

**5) IPF patented surface treatment is a mix of highly performing oils, waxes and varnishes which can be applied both on solid and 2-3 layers engineered floors.**

**This treatment matches advantages of varnish (resistance to stain, no maintenance) and wax (natural look, restorability) providing the surface with a natural and velvety look (not plastic look, like usually in varnished flooring), high stain resistance and practical use (unlike usual wax treatments).**

MAIN PECULIARITIES OF IPF PATENTED TREATMENT:

**1) Natural Look** (as a wax. Varnish usually has a plastic look).

**2) Resistance to stains** (as a varnish. Wax and oil get easily stained) Please see our CATAS Certification on our catalogs and price list.

**3) No specific maintenance** (as a varnish. Wax and oil need to be treated every 3-6 months).

**4) No specific products for ordinary maintenance** (as a varnish. Wax and oil usually need to be treated with specific and expensive products). Please see our CATAS Certification.

**5) Superficial scratches can be easily restored** with a cotton or wool cloth soaked in wax (common characteristic in wax and oil). Varnish, on the contrary, cannot be restored unless repainting the entire surface.

**6) Most of the IPF and IPF Smart Solution collections are certified fire resistance in class Cfl-s1.** For more and further information, please contact our commercial department.

**7) All IPF collections (except Camelot, Mater Terra and Shabby Chic) are certified sanitized surface,** an important feature especially for bedrooms, bathrooms and hotels. CATAS C certification on page 30.

**8) All IPF collections (except for Camelot, Mater Terra and Shabby Chic collections) have obtained the maximum result in the Cross-Cut test (paint coatings resistance):** scratches resistant, quality and anchorage of the finish on the surface. CATAS D certification on page 31.

Our commitment together with our verve and passion we daily put in our work are addressed to our partners to underline the continuous search for new dynamic and prestigious solutions and for the creation of our new exclusive collections, unique in their hand made finish.

Our mission is full of new inspirations and it is at the basis of all our commercial actions, in order to:

**CREATE A SOLID RELATIONSHIP WITH OUR CUSTOMERS WHO ARE THE REAL CORE OF ALL OUR INITIATIVES.**

**THE ROLE OF OUR COMPANY IS TO STUDY SOLUTIONS FOR NEW DEMANDS.**

**OUR PARTNER SHOULD BE ATTRACTIVE INSIDE THE MARKET AND PROPOSE HIMSELF ALTERNATIVE TO THE STANDARDISED SOLUTIONS PROPOSED BY COMPANIES WHO DO NOT COMPLY WITH MARKET FUNDAMENTAL BALANCES.**

**IPF'S CUSTOMERS ARE LEADER IN THEIR AREA FOR QUALITY AND RANGE WIDTH (IPF, IPF SMART SOLUTION AND TOUCH), WILLING TO PROPOSE BOTH TRADITIONAL AND INNOVATIVE HIGH QUALITY WOOD FLOORING.**

**IPF'S PARTNERS ARE RELIABLE, COMPETITIVE AND INNOVATIVE, ABLE TO REALIZE OUR AMBITIOUS PROJECTS**

***IPF***  
***Precious Italian Flooring***

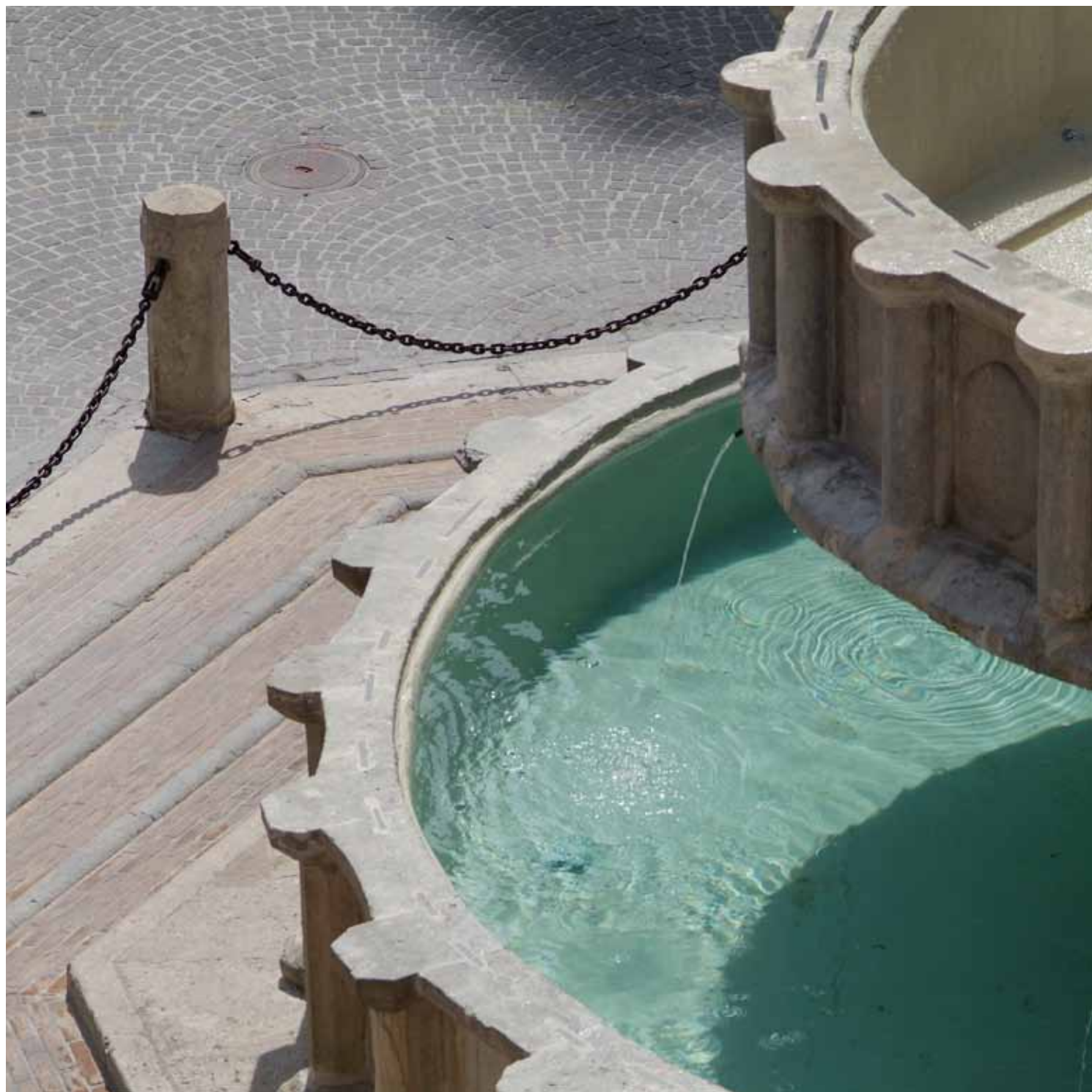


# PROCESSING TIMES

PROCESSING STEPS AND TIMES OF AN IPF WOOD FLOORING			
PROCESSING	SYSTEM	DURATION OF IPF PROCESS IN DAYS	PRODUCTION FACILITY
PRE-DRYING	OPEN AIR	120	POLAND
DRYING	TERMO VENTILATED	45	POLAND/ITALY
SEASONING	INDOOR WAREHOUSE	450/540	POLAND/ITALY
MANUFACTURING (profiling)	PARQUETRY MACHINE		POLAND/ITALY
BRUSHING IPF smart solution	BRUSHING		POLAND
BRUSHING IPF	BY HAND		ITALY
PLANING	BY HAND		ITALY
SERRATING IPF smart solution	BY MACHINE		POLAND
SERRATING IPF	BY HAND		ITALY
FINISHING IPF smart solution	BY MACHINE		POLAND
FINISHING IPF	BY HAND	30/35	ITALY

Notes:	The IPF smart solution LOUNGE ART's collection is brushed, or hand planed with wax effect finish (7 coats). This is a kind of "semplication", possible only for some among IPF's colors of the wax effect cycle.
	The IPF smart solution finish, made with the best rough material available in the market, use the technology to roll LASER.
	OIL UV or UV drying. The wax effect finish is hand made on all the IPF collections, except for CAMELOT, MATER TERRA and SHABBY CHIC.
	The plank of the collection MARCO POLO is manufactured in China (strictly directed by IPF) and treated in Europe with natural reagents and oil Woca (Denmark).







# MAINTENANCE / PERIODICITY

(with nurrishing products, oils, waxes, etc.)

USE	SURFACE TREATMENT			
	UV LAQUER	UV OIL	WAX/OIL	IPF WAX EFFECT*
LITTLE USED (Eg.: bedroom)	UNDUE	UNDUE	SIX-MONTHLY	UNDUE
AVERAGE USED (Eg.: living room etc.)	UNDUE	SIX-MONTHLY	QUARTERLY	UNDUE
MUCH USED (Eg.: kitchen, shops, etc.)	UNDUE	QUARTERLY	MONTHLY	UNDUE

Notes:

\* Wood flooring treated with IPF wax effect only needs ordinary maintenance without use of expensive specific cleaning products.  
The most popular and widespread products can be used preventing from damages due to the use of unappropriate detergents.

Of course, the maintenance of an IPF WAX EFFECT wood flooring results to be cheaper than:

- ordinary engineered wood floorings and
- handmade wood floorings (oil or wax) requiring the use of specific detergents daily, often very expensive and it is, also, necessary to follow a recurring program of maintenance, very expensive as well.



# SUBFLOOR: DEFINITION AND REQUIREMENT

## IS THE BASE FOR THE INSTALLATION OF THE DECORATIVE LAYER

To achieve an installation up to standard the subfloor must be:

- a) Not friable and crumbly, enough compact.
- b) Without cracks and fissures.
- c) Enough seasoned and dry.
- d) Levelled and smooth.
- e) Smooth and hard according to the kind of flooring to fit.
- f) Clean

## SUBFLOOR CHECKING

Conditions of the subfloor can be checked at job site only with simple methods which are not much precise.

Thus it is hoped that the most appropriate ones are chosen among the available methods and compared to get a reliable result which shall be evaluated by the fitter's experience.

### a) Not friable and crumbly, enough compact.

Evaluation on site can only be empirical. To have an approximate idea of the compactness and hardness of the subfloor the following methods can be compared:

- 1) No mark left after striking the surface with a hammer
  - 2) No powder and crumble or deep marks when strongly scratching the surface with a nail.
- In case of short compactness or chalking use hardening and consolidating primer (eg. PRIMER K, PRIMER EPO 2, PRIMER UR 50, PRIMER SF, PRIMACRIL Vermeister S.p.a.) according to the subfloor and to the adhesive which is going to be employed afterwards.

### b) Without cracks and fissures

Standstill capillary fissures are allowed on cementitious substrate. Other fissures due to too quick drying of the substrate or to settlement or all those fissures in progress, must be repaired with the suitable adhesive (eg. PRIMER EPO 2 Vermeister S.p.a.) using expansion joints where required.

### c) enough seasoned and dry

According to its composition, every subfloor needs its time for setting and seasoning to reach its hygrometric balance which corresponds to a certain residual moisture.

The value of such moisture is calculated by a weight percentage. Every material used to make the subfloor has its time for setting and seasoning and such values are variable according to the thickness of the fitted material and the environmental conditions.

Time for setting, seasoning and drying refers to optimal environmental conditions and are purely indicative as many other factors may intervene: temperature, environmental dampness, ventilation, thickness, compactness and dosage of binders.

Flooring installation is possible if the residual moisture does not exceed the values in the following table:

SUBFLOOR	MATERIAL TO BE FITTED	MAXIMUM DAMP ALLOWED
CEMENTITIOUS	PARQUET	2 %
ANHYDRITE	PARQUET	0.5 %
POURED ASPHALT	PARQUET	0 %
SILORAPID PRO DRYING	PARQUET	2 %

Over such values the installation is only possible after the subfloor is treated with suitable primers.

There are many methods to measure subfloor moisture and their reliability also depends on the correct way tests are carried out.

A practical method to have an overview of the subfloor residual moisture is to measure it with a capacitive hygrometer. Results must be converted into percentages of residual moisture relative to the materials which the subfloor is made.

This instrument allows finding possible critical points or higher residual moisture where more accurate measurement will be performed at a second moment in time.

Determination of moisture content using the Calcium Carbide Method is the most reliable one to be performed at site.

The instrument used is the calcium carbide hygrometer. Such method is really reliable as a sample is taken and put into the instrument which directly and exactly measures the moisture content through a chemical reaction.

It is appropriate to inquire about placement of pipe and sheats





not to damage them when piercing the subfloor.

It is very important to know the type of material which we are determining the moisture content and take into account possible deviant factors (pipes installation, lath, additives in the subfloor) or risks (hygroscopic materials, no steam barrier, etc.) Thus before measurement, the subfloor must be known as best as possible.

In case of residual moisture content over the values in the table here above, waterproof primer must be applied (eg. PRIMER UR 50, PRIMER SF, PRIMER EPO 2, PRIMER EPO 3 Vermeister S.p.a.). Choice according to the type of subfloor.

#### **d) Levelled and smooth**

The subfloors must be smooth and flat without wavinesses and at the same height of the adjacent floors, including thickness of the wood flooring to be installed.

Check the subfloor flatness by a 2 lm straight-edge; no height differences over 5 mm are allowed.

Otherwise irregular and no-planar substrates can be corrected and smoothed by specific products (eg. RASOSELF Vermeister S.p.a.)

#### **e) Smooth and hard according to the kind of flooring to fit.**

Hardness and top finish of the substrate must be suitable to be flooring to fit. The one for wood flooring is FINE FLOAT

#### **f) Clean**

The substrate must be clean, free from dust, parting compounds, oil and grease, with no loose such as residual traces of cement or adhesive not to limit the effect of primer, hardener, filler or compromise the effectiveness of the adhesive.

Therefore it is necessary:

- 1)** To scratch out and clean oil and grease or any plaster clot.
- 2)** To remove any flaky or imperfectly anchored parts.
- 3)** Free the substrate from dust or treat it with suitable primer

In case of bonding on old substrates it is necessary to remove any residual part of the old flooring and its adhesive except if it is enough solid and compatible with the adhesive for the new flooring.

## ENGINEERED WOOD FLOOR LAYING

Installation can start as soon as the subfloor and the parquet flooring have been checked and the site prepared. There must also be the right environmental conditions:

- rooms temperature of +15°/+25° C;
- constant relative humidity level of 45%/65%;
- all finishes completed
- windows/doors frames installed.

It is very important to choose a suitable adhesive (eg. REPOX, ZERO%, MONOSIL, ZEROMONO Vermeister S.p.a.) according to the type of wood flooring, to the installation site and to the customer's needs.

For the whole range I.P.F. and I.P.F's Plus + we suggest a two-component adhesive (eg. ZERO % Vermeister S.p.a.) And ZEROMONO adhesive for "Le Perle" panelling.

Installation must be carried out taking into account all necessary solutions according to direction, geometry, type of site. Apply the adhesive evenly over the substrate using a notched trowel and the flooring consequently as per instruction of the manufacturer.

Being the installation placing a board on the floor to start the first row. Once it is complete continue up to the last one. Be sure to leave an expansion gap of about 7/10mm between the wall and the boards. Such gap will be covered but not obstructed by a perimeter profile.

Carefully remove residual traces of adhesive from the surface while still wet using CLEANER Vermeister S.p.a.

Once hardened it can only be removed by mechanical means.

## INSTALLING OVER RADIANT HEAT SYSTEM

Generally IPF wood flooring are suitable for installation over radiant heat subfloors.

Prior to installation check the subfloor to be clean, seasoned, dry, flat and smooth. Fill low areas with a quality floor levelling compound.

Also follow the below requirements:

- spacers and wedges along the walls to hold the boards in place from the force of installation. They must be large enough to allow for the needed expansion.
- Heating pipes must be covered with 30mm of concrete.

Otherwise pipes are too much near the surface and the result is floors that will expand, contract, shrink, crack, cup and bow excessively.

A moisture barrier under the subfloor is a must. The barrier helps maintain an even moisture balance in the floor.

Subfloor moisture should never exceed the following residual values:

- cement subfloor 1,7%
- anhydride subfloor 0,2%

After an appropriate seasoning of the subfloor heat system must be operated at normal living temperature for about 2/3 weeks before installation.

2/3 days before installation, turn heat off and allow the subfloor to cool to room temperature. Turn heat on again and gradually raise heat to the desired temperature.

Usually levelling and impermeabilization are not allowed on radiant subfloors.

It's advisable to use a suitable primer against dust and glue the flooring with one-component or two-component (reactive monocomponent and bi-component) adhesive (eg. REPOX, ZERO%, MONOSIL, ZEROMONO Vermeister S.p.a.).





# MAINTENANCE OF A PRE-FINISHED WOOD FLOORING

## • Treated IPF WAX EFFECT

As previously stated a pre-finished wood flooring treated with IPF wax effect treatment does not need any particular care or maintenance and it is extremely stain-resistant (ref CATAS certificates pag. 28). It is advisable to stick to some easy rules to enhance the technical and aesthetical characteristics of your wood floor :

- 1) Daily remove dust by a vacuum or dust catcher clothes.
- 2) Weekly clean with water and neutral detergent. If the area is wide change the cleaning solution accordingly to avoid dirt to accumulate between chamferings. In heavy traffic areas (offices, shops...) cleaning with water and detergent should be done every day.
- 3) Wood flooring treated with IPF wax effect does not need ordinary or extra maintenance. Treatments with wax and oil are not due. In heavy traffic areas (offices, shops, ground floor, entrance from the garden...) yearly cleaning with stronger professional detergents is recommended. To check the suitable one please contact our technical department.
- 4) In case of accidental scratches please contact our technical department to get products and procedures to restore the treatment and/or the colour properly.

## • IPF NATURAL OIL Treatment\_IPF SMART SOLUTION:

Commonly to all the wood floorings natural treated (oil or wax) and thus for our collections IPF Shabby Chic and IPF Smart Solution ANTIQUE OAK COLLECTION OIL and MARCO POLO it is necessary to provide with an adequate maintenance program, in order to preserve the quality and the duration of the wood flooring:

- 1) Daily remove dust by a vacuum or dust catcher clothes.
- 2) Clean regularly with water and neutral detergent Shabby (with IPF collection) or water and oil detergent (for IPF Smart Solution collections). If the area is wide change the cleaning solution accordingly to avoid dirt to accumulate between chamferings. In heavy traffic areas (offices, shops...) cleaning with water and detergent should be done every day.
- 3) Wood oil flooring treated requires an extra maintenance, periodically and depending on how often it is used, to be complied with as follows:

### • Private house

Use a maintenance treatment with Shabby oil (Shabby Chic collection) or oil maintenance (Antique Oak Oil collection\_Marco Polo) every 12/18 months; for particularly damaged surfaces and in agreement with our technical department, it may be necessary to treat it with Shabby restorable oil or restorable oil.

### • Public places

Use a maintenance treatment with Shabby oil (Shabby Chic collection) or oil maintenance (Antique Oak Oil collection\_Marco Polo) every 6 months; for particularly damaged surfaces and in agreement with our technical department. It may be necessary to treat it with Shabby restorable oil or restorable oil.

- 4) In case of accidental scratches please contact our technical department to get products and procedures to restore the treatment and/or the colour properly.

• **Treatment OIL UV \_ IPF Smart Solution:**

- 1) Daily remove dust by a vacuum or dust catcher clothes.
- 2) Clean regularly with water and neutral detergent. If the area is wide change the cleaning solution accordingly to avoid dirt to accumulate between chamferings. In heavy traffic areas (offices, shops...) cleaning with water and detergent should be done every day.
- 3) Wood flooring treated with OIL UV does not need an extra maintenance, if properly treated. If the surface will be particularly damaged, in agreement with our technical department, it may be used the restorable oil.

• **Treatment UV\_IPF Smart Solution:**

- 1) Daily remove dust by a vacuum or dust catcher clothes.
- 2) Clean weekly with water and neutral detergent. If the area is wide change the cleaning solution accordingly to avoid dirt to accumulate between chamferings. In heavy traffic areas (offices, shops...) cleaning with water and detergent should be done every day.
- 3) Wood flooring UV finished does not need an extra maintenance, if properly treated.  
A few advices to keep the original aspect of an IPF parquet, despite the finishes, are hereby listed:
  - For cleaning and maintenance only use the products present in the IPF and IPF smart solution pricelist. If different, please check them before with our technical department.
  - Apply suitable felt pads under the chairs, furniture etc. to avoid possible damages of the wood flooring's surface.
  - For oil treated wood floorings do not use microfiber clothes, not suitable for natural treated floorings.
  - Follow strictly all the rules described inside the "product sheet" (fac-simile on page 22).
  - Follow strictly all the rules described in the site conditions, edited in the price list IPF, IPF smart solution and catalog.



# PRODUCT SHEET (fac-simile)

In compliance with the provisions of the Act of 10 April 1991. 126 “rules for consumer information” and the Ministerial Decree of February 8, 1997 n. 101 “Implementing Regulation”

Product:	MULTILAYER HARDWOOD/CONIFERS WOOD WITH JOINT FOR WOOD FLOORING
Description:	wood flooring marked CE -2 layers engineered, prefinished “Plancia L TOP”
Commercial name:	Oak - I.P.F. collection I CLASSICI (Oak Aria, O. Naturale, O. Classica, O. Antica, O. Opera, O. Invecchiata, O. Romantica, O. Nabucco)
Botanical name:	Quercus spp. <b>FSC certified.</b>
Feature of the layers:	Birch plywood or similar

## GENERAL AND TECHNICAL FEATURES

Origin: Europe	Texture: rough
Color: from yellow-brown to golden yellow	Grain: straight
Dimension: mm.15,0/4,2x190x1700/2000 T&G noble top layer, nominal thickness mm. 4,20	Finish: collection “I CLASSICI” handmade finish brushed, bevelled, top finish wax effect (15% Gloss; Romantica Beethoven 30% Gloss) - Top Gloss (95% Gloss), Mat (0% Gloss). CERTIFIED SANITIZED FINISH - CERTIFIED STAIN RESISTANT
Color tones: variable depending on the surface treatment and exposure to light	Shrinkage: medium
Oxidation: modest	Stability: medium/high
Formaldehyde emission: CLASS E1	Specific weight: 0,55/0,97 g/cm <sup>3</sup>
Quality: Ref.: UNI EN 13489:2004	Hardness: good (Brinell Kg/mm <sup>2</sup> 3,4 - Janka Kg/cm <sup>2</sup> 600)
Grade: FREE CLASS, ELEGANT, COMFORT, UNICA as deccribed in IPF's price list	Durability (resistance to pests and fungi): good heartwood low for sapwood
Humidity: Ref.: UNI EN 13183	Installation system: floating with sound proof mat (vinylic glue along T/G is recommended) or glued with bi-component adhesive
Terminology: Ref.: UNI EN 13756	Radiant slab: suitable*
Fire reaction Class: Cfl-s1	
Ref.: UNI EN 13489:2004	



**General Information:**

Wood floor is subjected to color change due to exposure to sunlight. This change is in relation to the wood species, the type of finish and the amount of sunlight received. In some woody species the presence of small concretions of minerals are characteristic of each species.

**Storage instruction:**

Products must be stored in a dry and suitable area at a temperature between 10 ° C and 25 ° C and air humidity between 45% and 60%, away from heat sources and with intact packaging. The material should be handled with the utmost care and attention as it is a very delicate product, especially on the edges and joints. The floors supplied pre-treated with oil should not be kept in stock for a period not exceeding 30 days as the finish may be altered due to prolonged stay.

**Installation instruction:**

The installation must be carried out by professional and trained staff. The product should be removed from the packaging only at the time of installation that must take place in a suitable environment with mounted fixtures and plasters completely dry. Before starting the installation always check the suitability, compactness, flatness and general conditions of the substrate, the moisture of the screed, of the environment and of the wood itself.

The measurements shall be within the rules and got by means of special instruments (hygrometer for screeds, hygrometer for insertion of electrodes for wood).

Start the installation when the temperature is between 10 ° C and 25 ° C and when the ambient humidity is between 45% and 60%. The adhesive residue must be removed from the floor before immediately to avoid it drying and with specific products indicated for each type of finish. Ventilate the premises after installation.

**\* Laying on radiant floor heating/cooling**

Strictly follow the details and specific procedures for laying out this type of background, checking in advance the proper functioning of the system and leakage of water and / or steam . Before the installation is essential to switch on the system at least twice.

Laying with bi-component adhesive is recommended but in case of floating installation it is essential to use a special mat "THERMO FOAM". The ignition system must always be heated gradually in accordance with the standard binding.

**Maintenance and care:**

Keep the temperature between 18 ° C and 25 ° C and the air humidity between 45% and 60% in order to avoid or minimize the occurrence of cracks, swelling, and microfractures. The presence and permanence of water or other liquids, and too high

humidity level can cause irreparable damage. Avoid loading heavy loads concentrated on small portions of the floor in order to avoid localized failures.

**Lacquered surface:**

For the routine and extraordinary cleaning use a damp cloth lightly moistened with a mild cleaning products; do not use products containing alcohol, ammonia or any other aggressive product as they quickly would undermine the surface causing rapid deterioration. For extraordinary maintenance require the maintenance program to IPF's technical office.

**Oiled surface:**

After the installation do not wash the wood floor with water or other products for at least 5/7 days, then proceed with a first cycle of ordinary maintenance followed by one of extraordinary maintenance.

**Routine maintenance:**

Provide for the routine cleaning using our specific products for wood surfaces treated with oil. Do not use products not specifically designed for this type of finish because it could ruin the finish itself. Always observe the warnings and the dose recommended in the packaging.

**Extraordinary maintenance:**

Use of our specific products. Every 1-2 months for the areas of greatest traffic; every 3-4 months for those with normal traffic; every 5-6 months for those with lower transit. For the recovery of deteriorated or badly maintained oiled surfaces contact a professional.

**Disposal:**

Products must not be abandoned, but taken to the local public disposal systems in accordance with the regulatory provisions in force.

**Testing and Complaints:**

Testing of the installed material should be performed in compliance with the UNI EN PROTECTED - CEN / TS PROTECTED: 2008.

Any complaints must be raised within 8 days from receipt of goods by registered A / R. The start of installation implies the tacit acceptance of the product.

**Notes:**

The material is intended for professional use only for flooring surfaces. Any other destination could affect the functionality of the product itself.



# Free class

IPF studied this grade to enhance the aesthetical features of their exclusive collections even better.  
This grade is provided for law UNI EN 13226 and UNI EN 13489, appendix B, definition of Free class and included in the product sheet.

FACE ELEMENT			
CHARACTERISTIC	GRADE		
	ELEGANT	COMFORT	COUNTRY
Sound sapwood	Absent	Possible trace up to max 30% of the whole lot	Possible trace up to 45% of the whole lot
Knots (sound, thigh, rotten, plastered)	Occasional traces max. diameter mm 2,00	Possible trace up to max 50% of the whole lot	Present without limits
Yellow discolorations	Occasional traces	Possible traces	Possible traces without limits
Clay (brush bristling method)	Occasional traces	Possible traces	Possible traces without limits
Inclusions of bark	Absent	Absent	Absent
Bolt of lightning	Occasional traces	Possible traces	Possible traces without limits
Tangle fiber	Absent	Traces without limits	Possible traces without limits
Fiber deviation	Present without limits	Traces without limits	Possible traces without limits
Sound heartwood	Absent	Absent	Possible traces
Variation of colour (included black and red heart etc..)	Possible traces	Traces	Possible traces without limits
Traces of baton / slat	Absent	Possible traces	Possible traces
Parenchyma rays (slashes)	Traces without limits	Traces without limits	Traces without limits
Biological alteration	Absent	Infrequent	Possible traces
Possible holes *	Occasional	Possible traces up to max. 15% of the whole lot	Possible traces without limits
NO VISIBLE PARTS			
All features, without any limit of measure or size or quantity, are accepted, provided that they do not compromise the resistance of the wooden floor or do not jeopardize its structure.			

\* Possible presence of holes, lacking of pests.

PS: For what not specified in this vademecum, the laws UNI EN 13226, 13489 of February 2004 and UNI EN 11538 of June 2014 are applied. They are available in I.P.F. srl technical department.



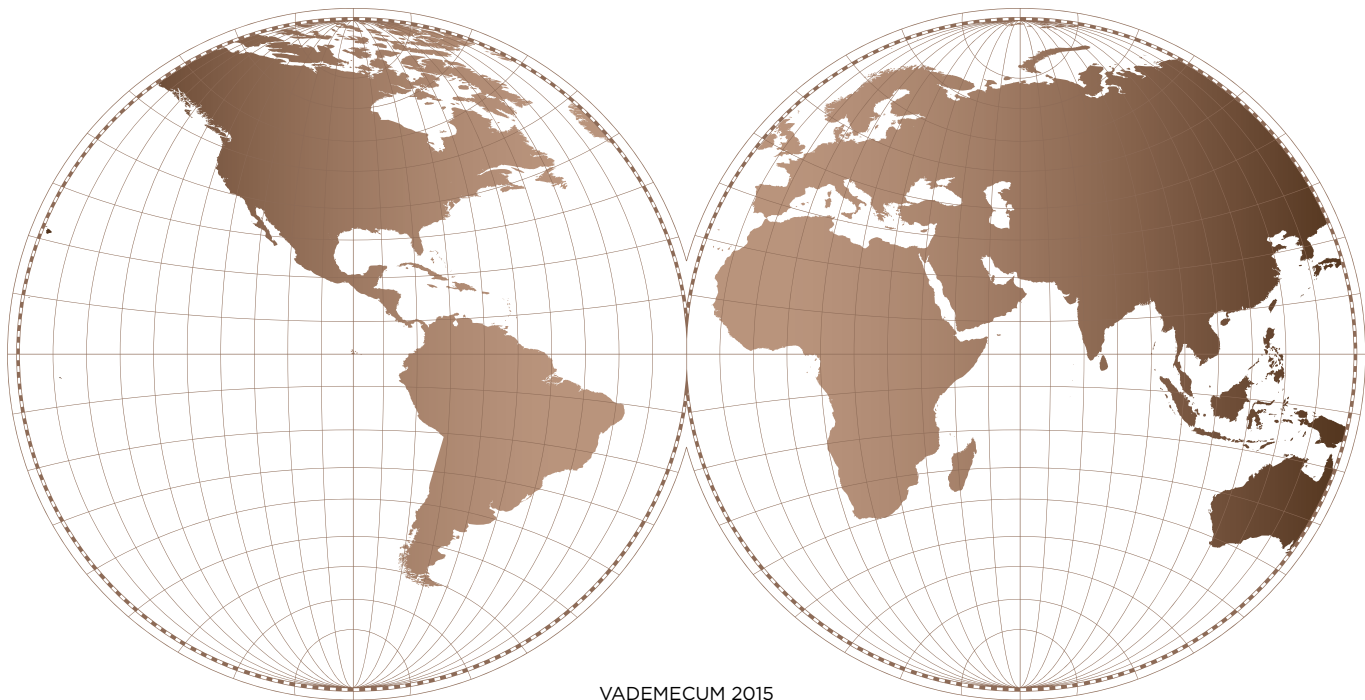
# THE IPF WORLD

## Hand made finish applied by hand

IPF COLLECTIONS	
I CLASSICI	hand brushed surface_wax effect treatment
CAMELOT	smooth surface _wax effect reagents treatment
DOGHE DEL MASTRO	hand planed surface _wax effect treatment
SEGATO A MANO	sawn and brushed surface _wax effect treatment
MATER TERRA	brushed surface/planed/ aged/ sanded _ wax effect treatment
TAVOLE DI MASTRO MARINO	hand brushed surface_ wax effect treatment
SHABBY CHIC	hand brushed surface _natural oil treatment
ARCOBALENO	hand brushed surface _ wax effect treatment
CHIC	hand brushed surface _ wax effect treatment
I BIANCHI	hand brushed surface _ wax effect treatment
I NERI	hand brushed surface _ wax effect treatment
AFRIKA STYLE	hand brushed surface _ wax effect treatment
COUNTRY INGLESE	smooth surface _ coat effect treatment
LOFT	hand brushed and decorated surface _ wax effect treatment

Industrial finish UV / UV OIL / NATURAL OIL (except LOUNGE ART)

IPF SMART SOLUTION COLLECTIONS	
HAPPY HOUR	smooth surface/brushed _ 7 UV coats treatment
BARRIQUE	brushed surface _ 7 oil UV coats treatment
FUSION	sawn/brushed surface _ 7 UV coats treatment
ANTIQUE OAK COLLECTION UV	brushed surface_ 7 oil UV coats treatment
ANTIQUE OAK COLLECTION OIL	brushed surface_ natural oil/oxidative oil treatment
LOUNGE UV	brushed surface _ UV oil 7 coats treatment
LOUNGE ART	hand brushed surface _ wax effect treatment (handmade)
MARCO POLO	brushed surface/aged _ natural oxidative oil treatment





# I.P.F. certificate - A



centro ricerca-sviluppo  
laboratorio prove settore legno-arredo

CATAS S.p.A.  
Iscr. Reg. Imprese Udine, numero  
iscr. e Cod. Fisc. 01818850305  
Partita IVA: IT 01818850305  
Cap. Soc.: € 812.850,00 i.v.

Via Anica, 24/3  
I - 33018 San Giovanni al Natone - Ud  
Tel. 0432.747211 r.a. - Fax 0432.747250  
<http://www.catas.com>  
e-mail: [lab@catas.com](mailto:lab@catas.com)

Autorizzato dal Ministero dell'Interno (D.M. 26-03-85 Reazione al fuoco)

Filiale:  
Via Brulle, 5  
I - 20035 Lissone Mi  
Tel. 039.461567 - Fax 039.461565  
e-mail: [lissone@catas.com](mailto:lissone@catas.com)



n. 0027

## TEST REPORT

45903 / 1

Date received: 24-01-04  
Date of test: 01-03-04  
Date of issue: 05-03-04

Sample name: I.P.F. Finish (no Barrique & Art&Natura) - Sample 1.

Spett. IPF INDUSTRIA PARQUET FABRIANO S.R.L.  
VIA DEL LAZZARETTO, S.N.  
60044 FABRIANO (AN)  
ITALY

## Assessment of surface resistance to cold liquids EN 12720/97

Staining agents	Contact time 16 hrs	Contact time 1 hr	Contact time 10 min	Contact time 10 sec
	Evaluation*	Evaluation*	Evaluation*	Evaluation*
Acetic acid (sol. 10%)	5	/	/	
Acetone	5			/
Ammonia (sol. 10%)	5	/	/	
Red wine	5	/	/	
Citric acid (sol. 10%)	5	/	/	
Cleansing agent	5	/		
Coffee (applied at 80 °C)	5	/		
Disinfectant	5	/	/	
Endorsing ink	2			
Ethanol (sol. 48 %)	5	/	/	
Ethyl-butyl acetate (1:1)	4			5
Olive oil	5	/	/	
Paraffin oil	5	/		
Sodium carbonate (sol. 10%)	5	/		
Sodium chloride (sol. 15%)	5	/		
Tea (applied at 80 °C)	5	/		
Water	5	/		
Beer	5	/	/	

Evaluations:

/ not necessary  
not required  
by the UNI 10944 std

5=no defects  
4=slight change in colour or gloss  
3=moderate change of colour or gloss  
2=strong mark  
1=surface detachment

\* Evaluations have been carried out under a direct (viewing cabinet) and indirect light source.  
Any discordances are reported.

Rating Class in accordance  
with the UNI 10944

B

Head of Department

Chief Executive  
Dott. Ing. Angelo Speranza

Sample name is declared by the company who asked for the test. This report relates to the samples submitted for the test and no others. Additions, deletions or alterations are not permitted. This test report must always be reproduced in its entirety.

**STAIN  
RESISTANCE**  
**Laboratory test  
by research Centre  
CATAS on I.P.F. finish  
samples (except  
Camelot, Mater Terra,  
Shabby Chic)**



# I.P.F. certificate - B



centro ricerca-sviluppo  
laboratorio prove settore legno-arredo

CATAS S.p.A.  
Iscr. Reg. Imprese Udine, numero  
iscr. e Cod. Fisc. 01818550305  
Partita IVA: IT 01818550305  
Cap. Soc.: € 812.550,00 I.S.

Via Antica, 21/3  
I - 33018 San Giovanni al Natone - Ud  
Tel. 0432.747211 r.a. - Fax 0432.747250  
http://www.catas.com  
e-mail: lab@catas.com

Filiale:  
Via Brulle, 5  
I - 29035 Lissone MI  
Tel. 039.464567 - Fax 039.464565  
e-mail: lissone@catas.com

Autorizzato dal Ministero dell'Interno (D.M. 26-03-82 Reazione al fuoco)

## TEST REPORT

45904 / 1

Date received: 24-01-04

Date of test: 24-02-04

Date of issue: 05-03-04

Sample name: I.P.F. Finish (no Barrique & Art&Natura) - Sample 2.

Spett. IPF INDUSTRIA PARQUET FABRIANO S.R.L.  
VIA DEL LAZZARETTO, S.N.  
60044 FABRIANO (AN)  
ITALY

## Resistance of surfaces to cleaning products PTP 53/95

### Test procedure:

The test consists in the application of a cotton wad soaked with the not diluted cleaning products on the surface.  
The products have been covered with a glass cover and left at normal ambiental conditions.  
After the specified time, the surface has been cleaned. A visual evaluation is carried out after 24 hours.

Contact time: 16 hours

### Test results:

Products	Evaluations	Remarks
Ajax Bagno	5	no defects
Ace bleach	5	no defects
Ammonia (sol. 10%)	5	no defects
Baysan multiuso	4	slight change in colour
Denaturated alcohol	5	no defects
Lyso-Form for kitchen	5	no defects
Viakal	5	no defects
Vetrol	5	no defects
Vim Liquid	5	no defects
Spic & Span	5	no defects
Mastro Lindo	5	no defects
Cif multiuso	5	no defects
Cif Spray with bleach	5	no defects
Cif Gel with bleach	5	no defects
Pronto Spray	5	no defects
Pronto Legno vivo	5	no defects
Pronto Legno pulito	4	slight change in colour
Red oil	5	no defects

Head of Department

Chief Executive  
Dott. Ing. Angelo Speranza

Sample name is declared by the company who asked for the test. This report relates to the samples submitted for the test and no others. Additions, deletions or alterations are not permitted. This test report must always be reproduced in its entirety.

**MAINTENANCE  
AND CARE**  
**Laboratory test  
by research Centre  
CATAS on I.P.F. finish  
samples (except  
Camelot, Mater Terra,  
Shabby Chic)**

# I.P.F. certificate - C



centro ricerche-sviluppo e laboratori prove  
settori legno-arredo, ambiente e alimenti

CATAS S.p.A.  
Iscr. Reg. Imprese Udine  
nr. iscr. C.F. 01818850305  
Reg. Impr. UD 20663  
P.IVA : 01818850305  
C.Soc. € 1.003.650,00 i.v.

Sede: Via Antica, 24/3  
33048 S. Giovanni al Nat. UD  
Tel. 0432.747211 ra.  
Fax 0432.747250  
http://www.catas.com  
e-mail: lab@catas.com

Filiale:  
Via Braille, 5  
20851 Lissone MB  
Tel. 039.464567  
Fax 039.464565  
e-mail: lissone@catas.com

## TEST REPORT

127736 / 1

Date received: 18-04-11  
Date of test: 02-05-11  
Date of issue: 06-05-11

Sample name: FINITURA CEROSA FTC8505/J CON ANTIBATTERICO 0,24%

Spett. IPF INDUSTRIA PARQUET FABRIANO S.R.L.  
VIA DEL LAZZARETTO, S.N.  
60044 FABRIANO (AN)  
ITALY

## Measurement of antibacterial activity of plastic surfaces ISO 22196:2007

Type of material tested: not analysed  
Specimen size: 50x50 mm  
Covering film: polyethylene, 40x40 mm, thickness 0,09 mm  
Bacterial strains: Escherichia coli ATCC 8739  
Staphylococcus aureus ATCC 6538P  
Volume of the inoculum: 0,4 ml

### Results with E.coli

inoculum density (cfu/ml)	cell count, time 0 untreated specimens (cfu/cm2)	cell count after 24 h untreated specimens* (cfu/cm2)	cell count after 24 h treated specimens (cfu/cm2)
1,8E+06	44375 log=Uo=4,65	94250 log=Ut=4,97	<1 log=At= <0

Antibacterial activity=R= (Ut-Uo)-(At-Uo) = >4,97\*

### Results with Staphylococcus aureus

inoculum density (cfu/ml)	cell count, time 0 untreated specimens (cfu/cm2)	cell count after 24 h untreated specimens* (cfu/cm2)	cell count after 24 h treated specimens (cfu/cm2)
5,7E+05	14187 log=Uo=4,15	43750 log=Ut=4,64	<1 log=At= <0

Antibacterial activity=R= (Ut-Uo)-(At-Uo) = >4,64\*

### Remarks:

\*test results are referring to reference specimens made of polystyrene, since no viable cells could be recovered from the untreated specimens provided by the customer.

This might indicate that under the testing conditions:

- 1) the untreated material has an inherent antibacterial activity;
- 2) the porosity of the surface does not allow recovery of bacterial cells by the standard washing procedure

*This document is validated by digital signature and time stamping in accordance with the Italian laws and the European Directives which regulate the electronic signature systems.*

Managing Director  
Dr. Andrea Giavon

The sample name and, when relevant, its description, are given by the orderer, and CATAS does not assume responsibility on this matter. This test report relates to the sample submitted for the test and no others. Additions, deletions or alterations are not permitted. This test report must always be reproduced in its entirety. Unless otherwise stated, sampling has been carried out by the orderer.

pag. 1/1

## SANITIZED

Laboratory test  
by research Centre  
CATAS on I.P.F. finish  
samples (except  
Camelot, Mater Terra,  
Shabby Chic)

# I.P.F. certificate - D



centro ricerche-sviluppo e laboratori prove  
settori legno-arredo, ambiente e alimenti

CATAS S.p.A.  
Isr. Reg. Imprese Udine  
nr. iscr. C.F. 01818850305  
Reg. Impr. UD 20663  
P. IVA : 01818850305  
C.Soc. € 1.003.650,00 i.v.

Sede: Via Antica, 24/3  
33048 S. Giovanni al Nat. UD  
Tel. 0432.747211 r.a.  
Fax 0432.747250  
http://www.catas.com  
e-mail: lab@catas.com

Filiale:  
Via Braille, 5  
20851 Lissone MB  
Tel. 039.464567  
Fax 039.464565  
e-mail: lissone@catas.com



LAB N° 0037  
MEMBRO DEGLI ACCREDITATI DI QUALITÀ EUROPEI  
PER I SISTEMI DI QUALITÀ

## TEST REPORT

128223 / 3 S

Date received: 02-05-11  
Date of test: 05-05-11  
Date of issue: 09-07-12  
Sample name: Linea chic.

Spett. IPF INDUSTRIA PARQUET FABRIANO S.R.L.  
VIA DEL LAZZARETTO, S.N.  
60044 FABRIANO (AN)  
ITALY

## Cross-cut test UNI EN ISO 2409:2007

Sample preparation and conditioning: done by the customer.  
Handy single blade cutting tool.

Test results:

Spacing between cuts	Classification 1st zone	Classification 2nd zone	Classification 3rd zone	Coating thickness
1 mm	0	0	0	from 0 to 60 µm hard support
2 mm	0	0	0	from 0 to 60 µm soft support
2 mm	0	0	0	from 61 to 120 µm soft/hard support
3 mm	0	0	0	from 121 to 250 µm soft/hard support

Classification:

- 0 no coating detached
- 1 less than 5% of coating detached
- 2 5-15% of coating detached
- 3 15-35% of coating detached
- 4 35-65% of coating detached
- 5 over 65% of coating detached

Notes:

- Chemical analysis of the tested material was not carried out.
- The test was carried out with all spacing cutting tools since the coating thickness was not measured.

COMMENTS NOT COVERED BY ACCREDITATION:

- Results obtained with 1 mm spacing cutting tool are more predictive of defects that may occur when in use.

This document replaces the previous one with the same reference and with date of issue 06/05/11.

*This document is validated by digital signature and time stamping in accordance  
with the Italian laws and the European Directives which regulate the electronic  
signature systems.*

Managing Director  
Dr. Andrea Glevon

The sample name and, when relevant, its description, are given by the orderer, and CATAS does not assume responsibility on this matter. This test report relates to the sample submitted for the test and no others. Additions, deletions or alterations are not permitted. This test report must always be reproduced in its entirety. Unless otherwise stated, sampling has been carried out by the orderer.

pag. 1/1

**CROSS-CUT TEST**  
**(paint coatings**  
**resistance)**  
**Laboratory test**  
**by research Centre**  
**CATAS on I.P.F. finish**  
**samples (except**  
**Camelot, Mater Terra,**  
**Shabby Chic)**



I.P.F. reserves the right to change technical specifications, size, and appearance of the proposed products, as well as the right to replace or discontinue certain items without prior notice.

This does not give the purchaser the right to demand cancelled or modified items.

Color samples are purely indicative.

As the materials are natural any difference in shade compared to proposed samples are to be considered as characteristic of the product.





Industria Parquet Fabriano S.r.l.  
Via del Lazzaretto, s.n.  
60044 Fabriano (AN) Italy

Tel. +39 0732 629262  
Fax +39 0732 629562

Iscriz. R.E.A. n. 01227680426  
Cap. soc. euro 826.400,00 int. vers

[www.ipfparquet.it](http://www.ipfparquet.it)