



All patterns pictured are reproductions. Witex Flooring Products GmbH reserves the right to make technical changes without prior notice. Item No. 20040014 • Inhouse • 06|09

Witex Flooring Products GmbH

Nord-West-Ring 21
D-32832 Augustdorf

fon+49 5237 609-0
fax+49 5237 609-309

info@witex.com

www.witex.com

WITEX®

THE FLOOR BRAND



COLOR⊕ - THE PREMIUM FLOOR

Excellent standard

WITEX[®]

color+

Its high gloss and heavy duty properties are what really set apart color+, the premium floor from Witex. Well-engineered production methods and technologies come together with the resistant X-Protect surface to make this floor both a technical and an aesthetic highlight.

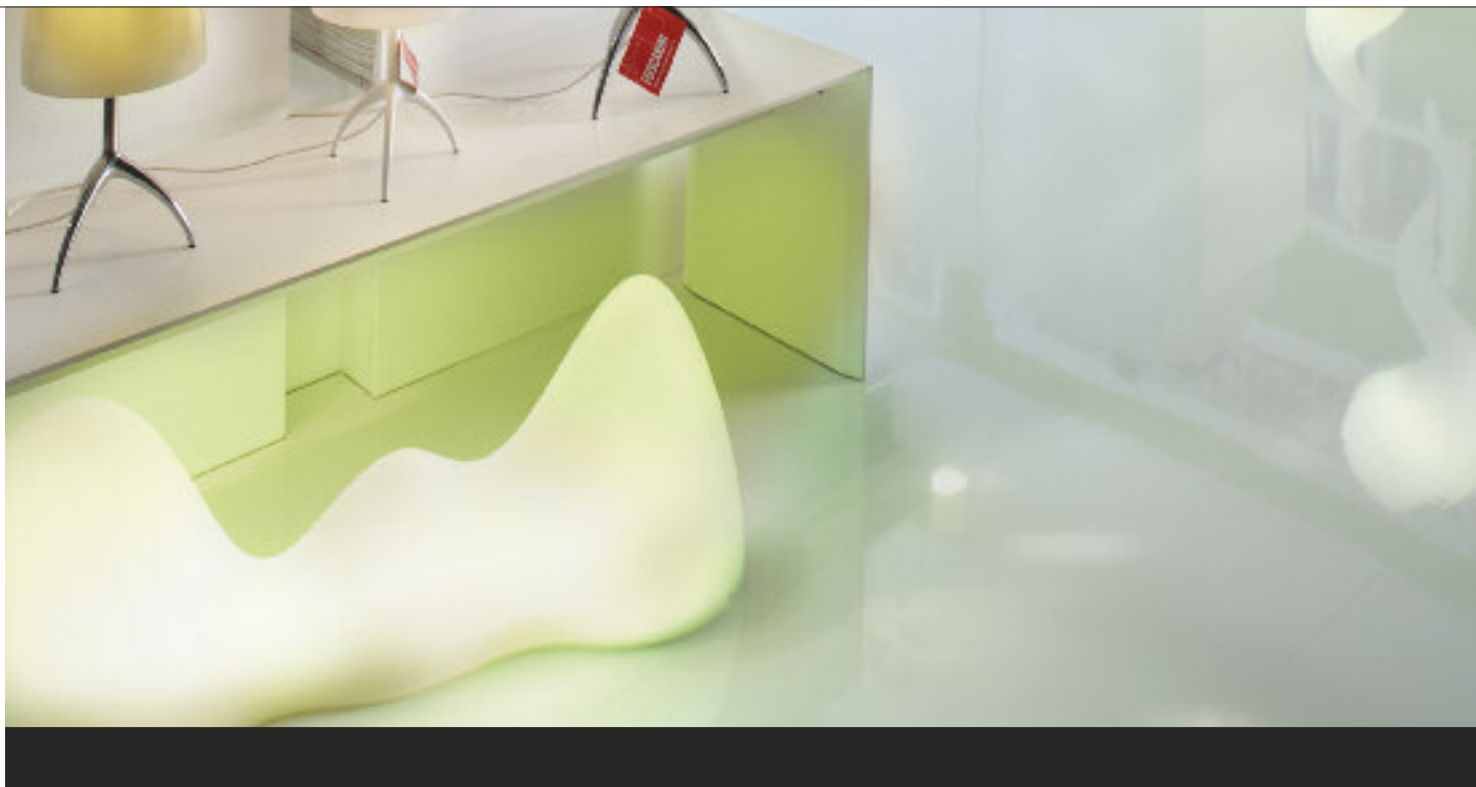
The LocTec click connections which join the panels offer reliability and facilitate rapid installation, whilst the integrated AquaProtect core board provides lasting moisture protection.

color+ is the perfect solution for high quality design concepts with a particular, high gloss accent in the floor design.

TECHNICAL INFORMATION

Glueless installation:	LocTec
Decor surface:	1488mm × 293mm
Panel thickness:	11,4mm
Panels per pack:	4 Panels 1,74m² 20 kg
Packs per pallet:	45 Packs 100,80 m² 924 kg
Surface:	X-Protect, 1,0 mm
Core board:	Aqua-Protect® for use in moisture-prone areas
Abrasion resistance:	AC 5
Impact resistance:	IC 3 (in accordance with EN 13329, annex F)
Dynamic coefficient of friction:	DS ($\mu \geq 0.3$)
Reaction to fire	B _{fl} -s1
Wear class for private areas:	23 heavy domestic use (in accordance with DIN EN 685)
Wear class for commercial areas:	33 heavy commercial use (in accordance with DIN EN 685)
Special warranty for private areas:	Lifetime
Special warranty for commercial areas:	10 Years

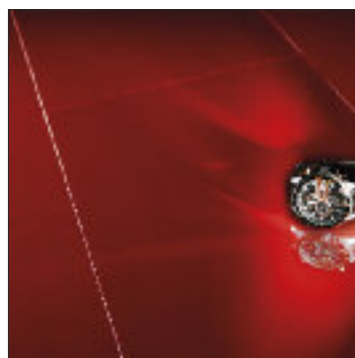




Deep Night • HH15054COL



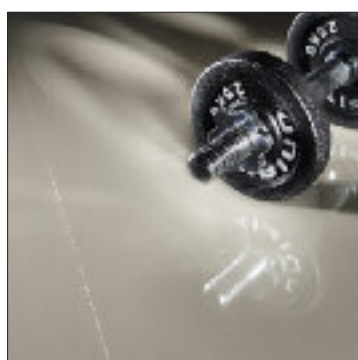
30060106



Sunset • HH14954COL



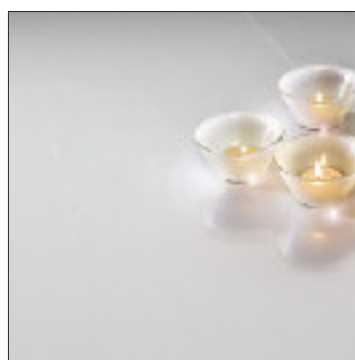
30060105



Monochrom • HH15154COL



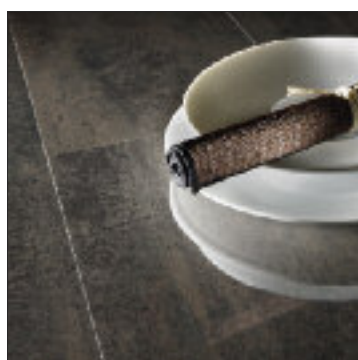
30060109



Ice • HH14854COL



30060104



Ferrum • HH14754COL



30060108



Reed • HH14654COL



30060107