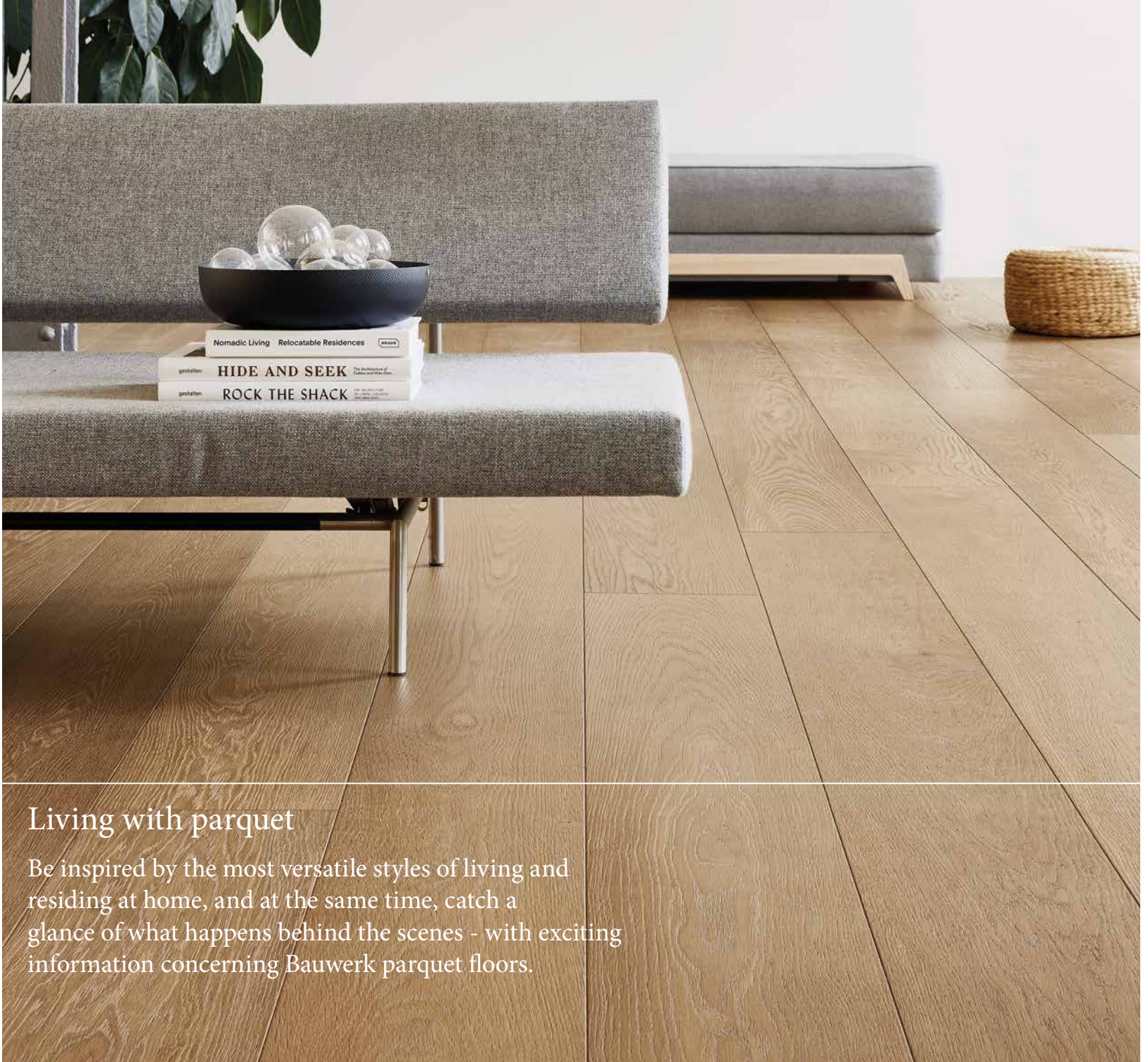


---

# ARTWORK

Apropos Parquet



## Living with parquet

Be inspired by the most versatile styles of living and residing at home, and at the same time, catch a glance of what happens behind the scenes - with exciting information concerning Bauwerk parquet floors.

**BAUWERK®**  
*Parquet*

---



# CONTENTS

ARTWORK NO. 9 | 1.2019

- 2** *Introduction*
- 4** *Bauwerk Expertise*
- 10** *Bauwerk A – Z*

## LIVING ENVIRONMENTS

- 12** *Exceptional Exclusivity*
- 22** *Urban Life*
- 34** *Natural Charm*
- 44** *The Magic of Faraway Places*
- 56** *Timeless Elegance*

## IN REAL LIFE

- 66** *Unexpected Treasures*
- 68** *Homestory – Huchler barn in Waiblingen*
- 72** *Homestory – Apartment «In der Ey»*
- 74** *Homestory – Apartment Amsterdam*
- 76** *Homestory – City apartment Berlin*
- 77** *Homestory – Mirasole Bellinzona*
- 78** *Stairs*
- 80** *World of parquet*
- 81** *A visible sign of quality*
- 82** *Newsverk*
- 84** *Healthy living & Sustainability*
- 86** *The way of parquet*
- 88** *Near you & Impressum*



**12** *Exceptional Exclusivity*



**22** *Urban Life*



**34** *Natural Charm*



**56** *Timeless Elegance*

## «NEXT» GENERATION

With its “Next”, Bauwerk developed a new multi-layer colour application ensuring a beautiful depth effect and enhancing the nuances of all colour shades. The result is a fascinating, very natural look. “Next” is available as a one-strip plank in Villapark format, and in two colour variations: “Oak slightly smoked Nebbia” and “Oak slightly smoked Canneto”. Photos of the two shades of colour are on pages 48 and 62.

*Villapark, Oak slightly smoked Nebbia*



Dear readers,

A home is more than just concrete, wood and furniture: it is a place of warmth, memories and comfort. Every person lives and designs this living space in an individual and unique way. This includes selecting the floor. In order to create room for inspiration in this decision, Bauwerk renews its artwork brochure every year. This artwork brochure is not just about our products. In it, we celebrate parquet as an attitude towards life and publish interesting reports about our products and company.

If you are someone who uses the Internet frequently, we would like to present you the new Bauwerk website. We have completely reworked our online presentation, and enhanced it with new practical functions. Take a look: You can use the parquet finder at [bauwerk-parkett.com](http://bauwerk-parkett.com) to find your favourite floor; use the configurator to virtually design rooms, and get now also a recommended price for your parquet project.



Wood is our passion; it has created our history and defines our future. This is why we place so much focus on sustainability, and care for nature and its resources. The trees that are used for parquet are only cut down at the end of their life cycle in the forest. They then enjoy a second life in your home. Furthermore, for every tree felled, a new one is planted: this makes parquet the only truly sustainable type of flooring.

In recent years, one issue has become particularly important for us: healthy living. We have invested a great deal of time and effort in improving our parquet and making a significant contribution to rendering ambient air healthy. It is not only architecture that is constantly developing; the products that are used in new or renovated buildings do, too. Modern, nearly airtight building envelopes are practical from the viewpoint of energy consumption; however, they reduce the exchange of air so much that harmful substances from various sources can accumulate in the room. As a result, tested construction products are required for healthy rooms. With the goal of improving the quality of life, we have even redesigned our production plant in St. Margrethen. Our efforts have gained recognition: All the products we make in St. Margrethen received a Cradle to Cradle® bronze certificate, and the Cleverpark Silenet and Multipark Silente products even won a gold award. This makes us proud and shows us that we are moving in the right direction.

Are you already familiar with Bauwerk ID? We use it as a visible mark of our long-lasting quality. With Bauwerk ID, high-quality floors by Bauwerk bear a unique label that is installed at the same time as the parquet itself. If you register your Bauwerk ID at our website, we will extend the guarantee for your parquet to ten years. The Bauwerk ID package also includes helpful tips about parquet care and cleaning products. Everything you need to know about Bauwerk ID is on page 81.

Whether you have a specific parquet project in mind, or you simply want to get the latest news, visit us at [bauwerk-parkett.com](http://bauwerk-parkett.com), follow us on social media, or browse our products in person at one of our worlds of parquet shops. We look forward to welcoming you to the world of Bauwerk!





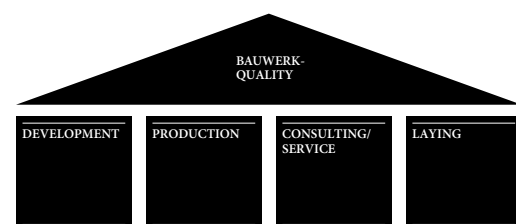
TOP QUALITY IS  
ONLY POSSIBLE  
WHEN PEOPLE AND  
TECHNOLOGY  
PERFORM AT THEIR BEST



**Bauwerk stands for quality –  
that is why we check every single plank by hand**

Bauwerk quality stands for the highest standards and is based on the four pillars of Development, Production, Services and Installation. Using this system, we guarantee top quality at every stage of the production process – and far beyond.

In our production, we guarantee Bauwerk quality by combining expertise with the latest technology. Even state-of-the art production facilities cannot replace hands-on and visual inspections by experienced staff. We manufacture parquet of a unique quality through passion and precision. This quality is the basis for a quick and precise installation and a parquet experience that wows. To ensure that our parquet strips are ultimately installed in a professional manner to create a perfect parquet floor, we work together with selected installers and offer these partners a professional training course at the Bauwerk Parkett Academy.

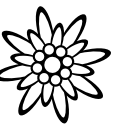


WITH PASSION  
AND PRECISION



# ON THE MOVE THROUGH EXPERIENCE AND INNOVATION

## SWISS TRADITION, BUT WITH OUR FINGER ON THE PULSE



**At Bauwerk innovative power has a tradition**

Switzerland is full of wonderful customs, colourful ways of life and rich in traditions. By combining these roots with Swiss quality awareness and new ideas, we create an inspiring variety of parquet for people who enjoy designing their living space.

Over 80 years ago our founding father Ernst Göhner developed the patent for making mosaic parquet. As early as the beginning of the 1950s, the company began to focus on research and development on wood technology. At our Swiss headquarters, we have always been developing new and innovative products like the Vintage Edition and Silverline Edition (2012), Master Edition (2013), Formpark and Silente technology (2014) and a world first: B-Protect® (2015). With the further development of Formpark Mini, the innovative product Flow Edition (2016), the extension of B-Protect® (2017) and Formpark Rombico and Formpark Quadrato (2018), Bauwerk proves once more that the pioneering spirit of its founding father is far from gone.

Bauwerk has been manufacturing its products in the St. Gallen Rhine Valley since 1935 and today, 61 % of the whole range is still produced here. We are truly committed to the work place Switzerland.



# HEALTH IS OUR TOP PRIORITY

## STRIVING TO MAKE “HEALTHY” PRODUCTS IS A LABOUR OF LOVE FOR ME



**Marcus Beutel | Chemist in Research & Development  
(at Bauwerk since 2011)**

“Bauwerk’s products are already among the healthiest products on the world market. It motivates me to constantly improve, and developing products that are completely pollutant-free is a top priority in my job. It is of personal interest to me to develop products for the homes of our customers that are healthy and sustainable using the natural resource of wood, and to continue finding other natural methods for making parquet. Not just as an employee at Bauwerk, but also as a father who only is too aware of possible dangers.”

### **Parquet – for a pleasant, healthy living environment**

Bauwerk’s “Healthy Living” mark of distinction makes a significant contribution to your quality of life. Once you take a conscious decision in favour of healthy building materials, you have taken a big step towards personal well-being in your home.

Thanks to its Sentinel Haus and Cradle to Cradle Certified™, Bauwerk can offer home builders and their families a unique guarantee: Bauwerk products will never have a negative impact on their health. Bauwerk thus stands for a beneficial, healthy atmosphere in your home.



**SENTINEL HAUS  
INSTITUT**





**ACCESSORIES.** Design your own living space with Bauwerk — using your own imagination and ideas. Be it skirtings, stair treads, ventilation grilles or decorative posts: Thanks to diverse accessories and customised solutions, Bauwerk can guarantee the perfect solution for every room situation.

**ANIMALS AND PARQUET.** A turned-over food bowl, or an inadvertent “puddle” in the living room: These small everyday mishaps are easily cleaned. Thanks to Bauwerk’s surface treatments, the parquet floor is very well protected.



**AMBITION.** And quality. With decades of experience in the manufacture of parquet and famous Swiss quality, Bauwerk sets the global standard in the manufacture, care and maintenance of parquet.



**BAUWERK ID.** Bauwerk ID is an indication of quality. The anodised rectangular aluminium component and personal ID number is installed in the desired area of the parquet by the floor layer. The elegant design combines well with all types of wood and different colour schemes. With registration, you get a warranty extension to up to 10 years for your parquet. Go to page 81 to find out more..



# PARQUET

INTERESTING AND  
USEFUL FACTS  
ABOUT BAUWERK,  
*SHORT AND SWEET*



**MATERIALS.** With healthy materials, Bauwerk manufactures floors without unwanted emissions for healthy living. This is also true of our cleaning and care accessories: none of our products contain environmentally hazardous substances or irritants. A great impact with maximum tolerance.



**ONLINE SHOP.** If you visit Bauwerk’s online shop, you will find not only find the proper cleaning and care products, but also various accessories, such as spray mops. And people who want a simple toy for their children can also order a Bauwerk Klötzli sack.  
[shop.bauwerk-parkett.com](http://shop.bauwerk-parkett.com)



**OPPORTUNITIES.** Bauwerk trains young adults every year. With broad basic training and optimal professional supervision, Bauwerk strives to turn trainees into above-average specialists, creating the best conditions for them to take a step into their professional lives.

**PRICE.** Long-term, parquet is a very economical product when compared to other flooring types. Parquet floors are durable and can be polished up to three times. Thus, if you so wish, you can benefit from your parquet floor for your entire life. Our website allows you to calculate a price estimate for the parquet of your dreams.

**RAW MATERIAL WOOD.** We give trees a second life in your home. The trees used for parquet are only felled at the end of their life cycle in the forest. Moreover, a new tree is planted for every tree that is cut down. This means that parquet is the only truly sustainable type of flooring.



**SAMPLES.** After providing full consulting in one of our parquet worlds, we provide you with a sample of your desired parquet to take home. This way, you can see how the parquet interacts with other objects in your home.

**STORIES.** Some four million square metres of Bauwerk parquet are installed every year. On our website, you will find a profile with exciting references: every project in it tells its own parquet story.



**SWITZERLAND.** Bauwerk is proud of its origins. As a long-standing Swiss company, it manufactures 61 per cent of its overall product range at its St. Margrethen plant. Bauwerk is the only production plant in the world to have been given Cradle to Cradle® bronze certification.

**TYPES OF WOOD.** Wood is a wonderful natural material, highly valued by humans since the beginning of history: Wood lives, breathes, and is unique when it comes to its structure and warm surface. Wood is always diverse, and is irreplaceably natural. If properly treated, its irregularities make wood really beautiful, giving any home a cosy and warm atmosphere.



**VERY EASY.** Cleaning and care of various parquet surfaces is extremely easy. There are few floors that are easier to maintain than parquet. You can find suitable products for your parquet in our online shop at [shop.bauwerk-parkett.com](http://shop.bauwerk-parkett.com).



# EXCEPTIONAL EXCLUSIVITY

Unique aesthetics and  
exclusive perfection

*True luxury means having space and the time to enjoy it. More and more people are creating their own personal aesthetic freedom with the finest materials and textures, exclusive lines and elegant colours – their small oasis in the everyday hustle and bustle of life.*

Refined tranquility and spacious areas – a uniquely relaxing but also vibrant atmosphere. A lounging chair with a matching ottoman by Charles & Ray Eames, chairs with light chrome frames skilfully create soothing exclusive accents. Different materials such as natural stone, smooth stainless steel or cool exposed concrete catch our eye with their subtle contrasts.

The almost 3-metre long Silverline floorboards really bring out the uniqueness of wood as a material with their distinctive grading and deeply brushed surfaces. Finished with natural oils, they shimmer in a soft silver or warm golden hues. Torben Hansen and his team are responsible for producing the boards of the Master Edition. Light brings the uniquely processed surfaces, materials and properties to life. This creates a kind of energy, an eternal interplay full of individuality transforming each floor into an original limited edition. Using the two ingenious and unconventional formats that the Hannes Wettstein Studio created with Formpark, we end up with patterns that fit in perfectly with the space and personality of the home-owners.







*The exclusive Silverline Master Edition in Pimento colour exudes special warmth. The uniqueness of the surface shows in the interplay with light, creating a harmonious ensemble with the golden-shining cube.*

Master Edition (Silverline), Oak Pimento





*Harmonious colours, cosy fabrics and Formpark, Oak Avorio in an exclusive style of installation, transform this room into a place of power.*

Formpark 520 and 780, Pattern 23, Oak Avorio





Villapark, Oak slightly smoked Cacao

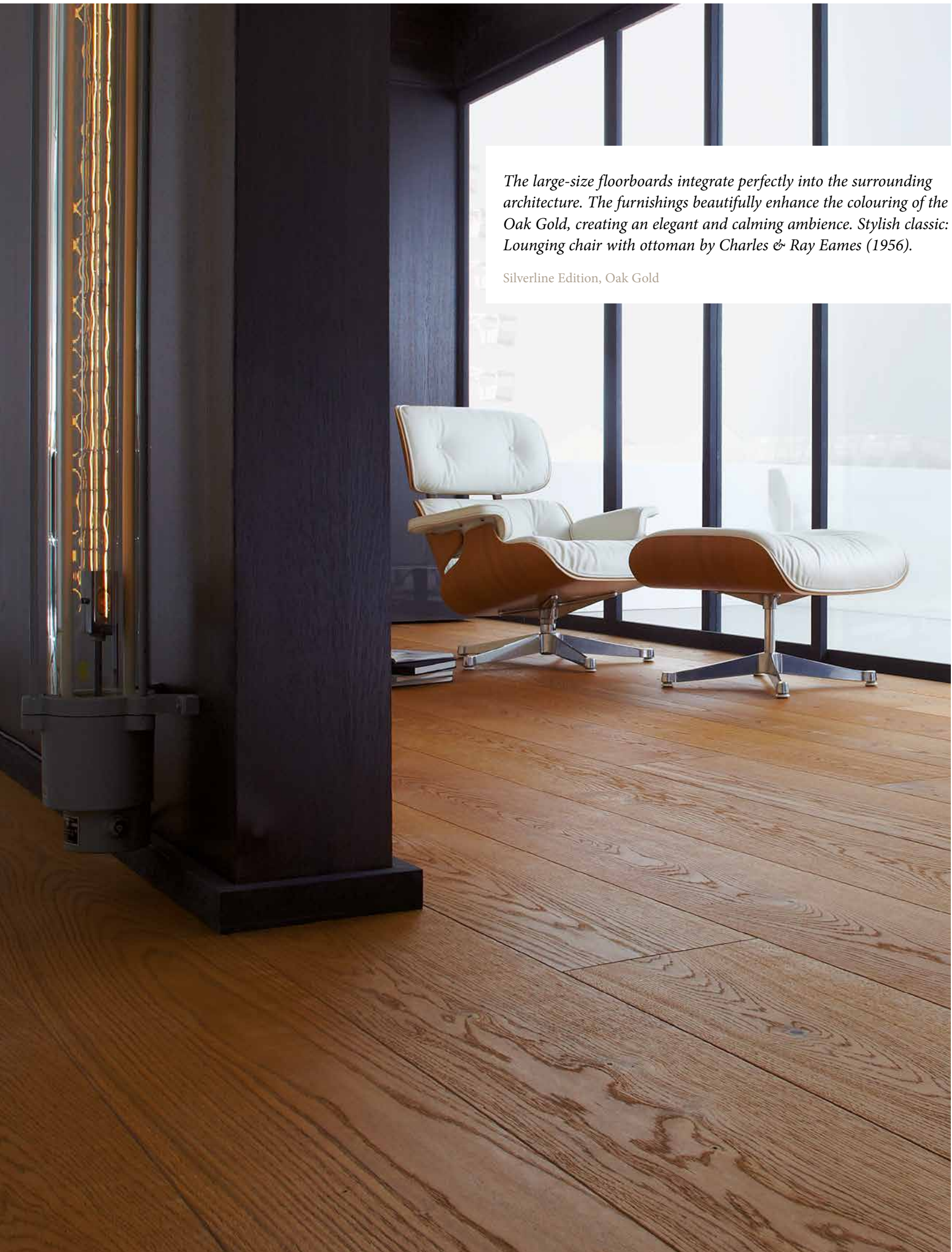


*The greyish Master Edition Studiopark planks in Oak Quartz blend perfectly with the dark materials of the walk-in wardrobe.*

Master Edition (Studiopark), Oak Quartz



Formpark Mini 380 & 570, Pattern 21, Oak smoked



*The large-size floorboards integrate perfectly into the surrounding architecture. The furnishings beautifully enhance the colouring of the Oak Gold, creating an elegant and calming ambience. Stylish classic: Lounging chair with ottoman by Charles & Ray Eames (1956).*

Silverline Edition, Oak Gold



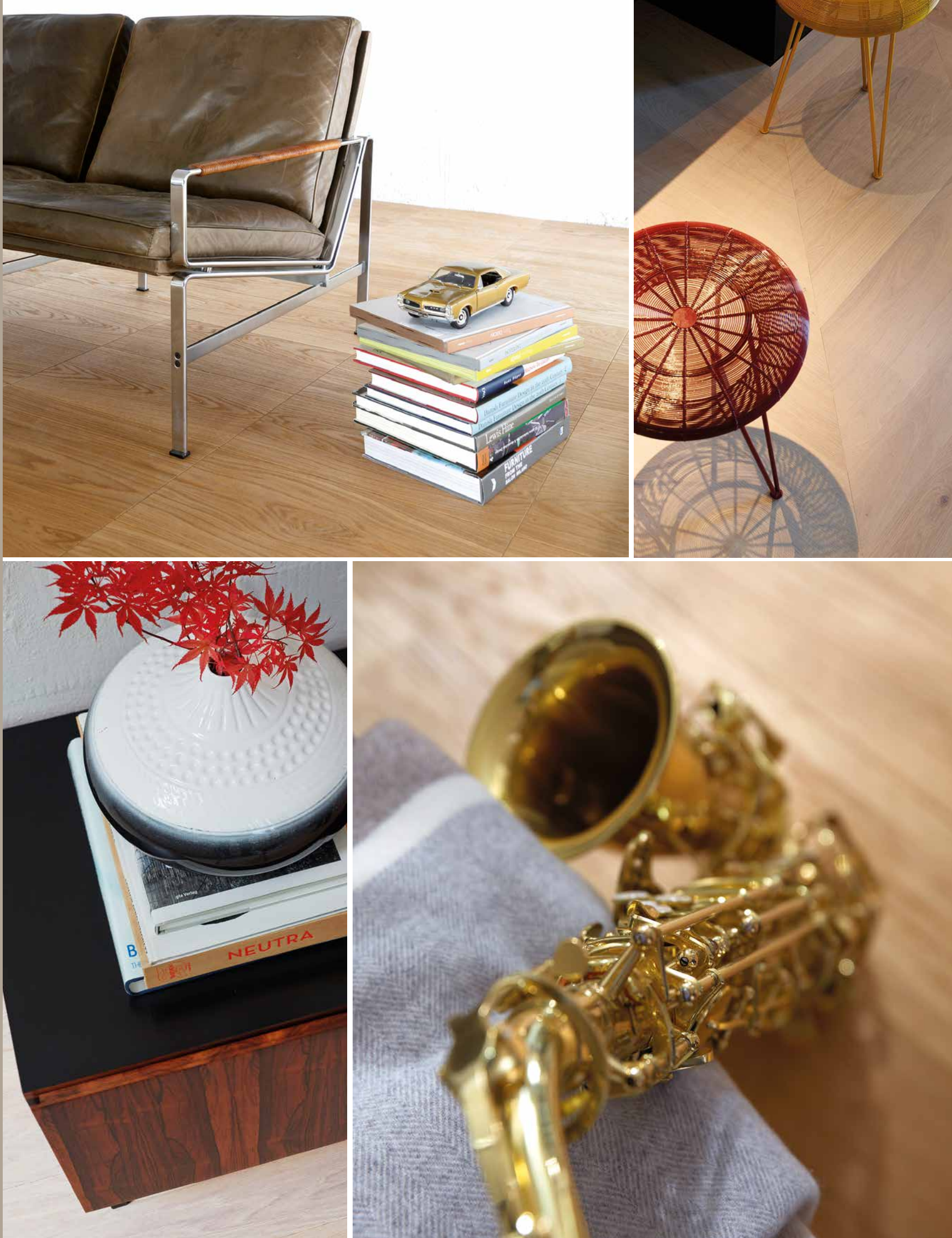
# URBAN LIFE

Dynamic innovations and streamlined functionality

*Cities are alive and dynamic; inspiring trends are constantly reinventing themselves from different influences, cultures and ideas. Although living areas in the city are limited, inexhaustible creativity can create maximum comfort in the smallest of rooms.*

Light, open spaces characterise urban life and personal style is the measure of all things. A nostalgic industrial look or an enthusiastic experimentation with contrasting combinations and rich colours? Urban cocooning full of light, ease and calm? Or emphasized streamlined simplicity? Anything goes.

Accents set through powerful colours, deliberate stylistic juxtapositions and different materials. And so, the search for something special between concrete and asphalt can also be found in the flooring with the warm look of the natural oak that looks like building blocks, or Cleverpark in smoked oak crema for that more snug feel. The city dwellers of this world specifically choose parquet flooring as the platform for the personal design of their living space.







*Strong contrasts characterise the masculine atmosphere of this arrangement. The light Villapark 1-strip planks with their natural surface ensure a sense of homeliness and cast a fascinating contrast to the more austere look of the furniture.*

Villapark, Oak Farina





*The light Oak Farina colour provides sharp contrast to a dark kitchen. The French herringbone laying pattern is particularly good for this spacious room, strengthening the interplay between light and its features.*

Formpark Rombico, Oak Farina





*A daring combination: 1950s style furniture in front of newly designed wallpaper. Rich colour contrasts on the building block oak floor make the retro scene look very modern.*

Prepark, Oak parallel



Studiopark. Oak







*Simple but striking. The dark floor in the colour of Oak smoked Crema underscores its loft-like charm. Contemporary furniture from the 1950s makes the room feel cosy in this old brick building with white, bare walls and original windows with metal frames.*

Cleverpark, Oak smoked Crema, B-Protect®





*Whether purist and elegant, tastefully selected and mounted or just simple and easy – the Flow Edition moulds to suit the most varied configurations of rooms.*

Flow Edition, Ash Bianco, B-Protect®

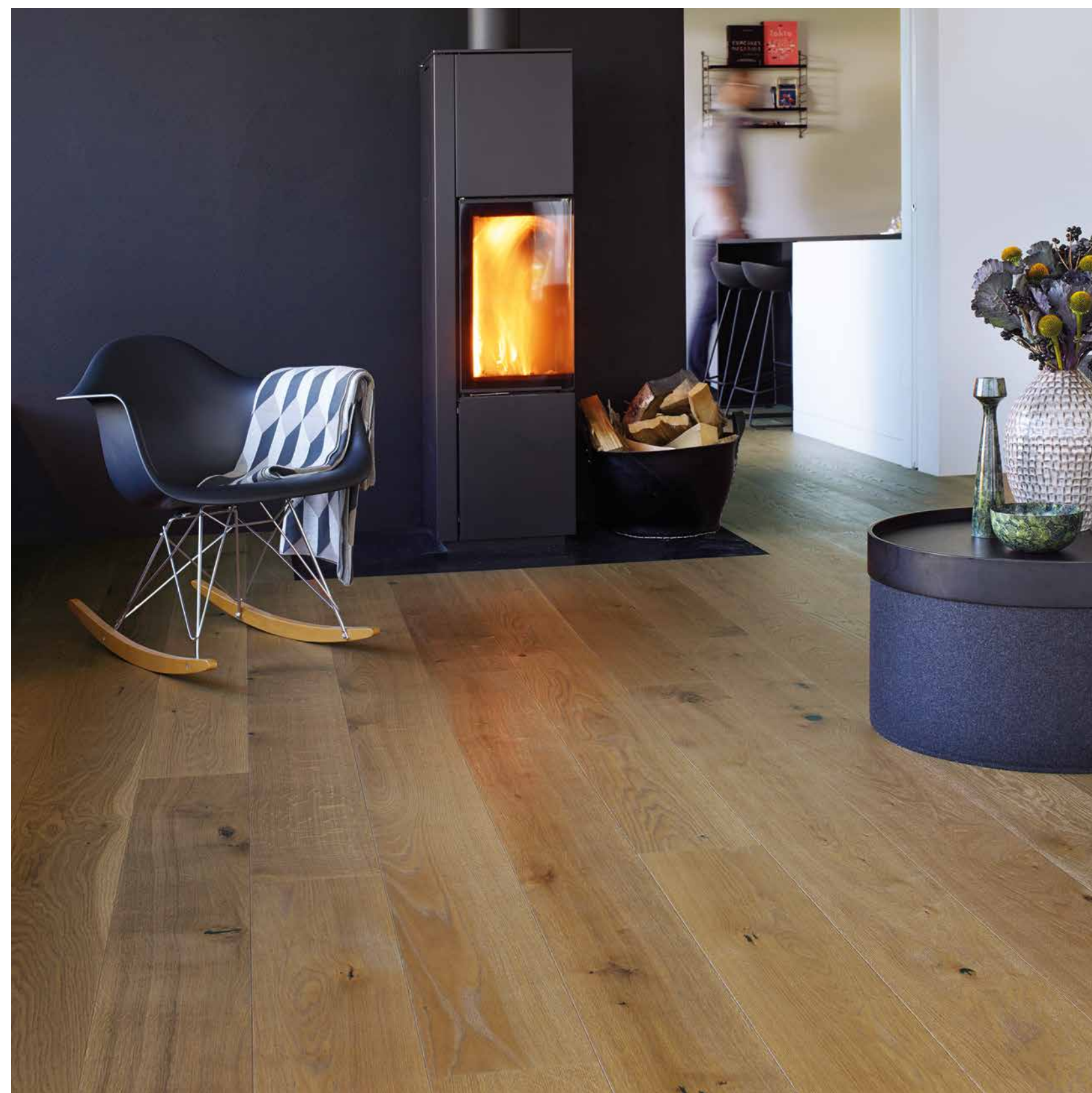
IC 0 2  
N I C 0  
A W A 1  
R D S 6

product  
best of best



German  
Design Award  
SPECIAL  
MENTION

Casapark, Oak Ambra





# NATURAL CHARM

Vibrant simplicity and modern authenticity

*The scent of a freshly mowed meadow by the slopes of the Grison mountains, fruit that is ready to pick from your own garden – the longing for nature lives on. The desire for peace and enduring values is noticeable in every detail.*

Technical capabilities, top-quality, authentic materials and natural forms all mark this space. A bulky workbench is skillfully turned into a stage for still life, rustic planks serve as a writing desk in the study, and freely hanging clothes give air to the bedroom.

Whether it is in a fine texture, smooth, light or in a special ship deck pattern using Formpark Oak: Parquet is a valuable part of nature that enriches both rural and modern styles homes and gives them that final personal touch. It is the natural look of textured surfaces, the rustic gradings and the light colours in particular that give rooms a warm, genuine and animated feel. And in the end, we lay witness to the bringing together of animation with authenticity and simplicity with real experiences.







*The very distinctive used-look appearance highlights the cosy character of these one-strip planks. The Oak Tobacco colour in combination with its rustic grading gives this parquet floor even more flair and authenticity. Thus, the work room becomes a creative space for the pursuit of talent.*

Casapark 181, Oak Tobacco used look







*The parquet floor creates a feel-good atmosphere, which comes from the kitchen and can be felt in the living and dining areas. The rustic look of Villapark planks with many knots and an expressive colour scheme is reflected in the old wood wall.*

Villapark, Oak



*The rustic floor creates the basis of the modern country house look, creating harmony between choice, individual items from various eras. Simple curtains filter the light. Together with a solid, old wooden bench, they set the stage for individually arranged still life.*

Cleverpark, Oak Avorio







Formpark Mini 570, Pattern 4, Oak







*Focusing on the essentials: a large, inviting bed surrounded by a quiet “sea of parquet”. You are guaranteed to relax! The warm brown tone fits in beautifully with the beams and the Bauwerk ID is a visible sign of quality.*

Villapark & Studiopark, Oak Mandorla, B-Protect®





# THE MAGIC OF FARAWAY PLACES

Multifaceted exotic combined with the beloved homeland

*The spirit of discovery and curiosity have always driven us to explore foreign countries and cultures. Local materials and craftsmanship come together with European influences to create a cosmopolitan living style that we enrich our homes with.*

Vibrant colour highlights with enticing, warm colours establish a fascinating scenery for select artefacts from all over the world. Japanese screens and palm leaves in woven baskets are a reminder of exotic locations, while cool copper lights and ceramic bowls in pastel colours make it possible to relive the holidays in an intimate Scandinavian space.

Carefully selected, the planks set the stage for an exotic touch. Be it a slightly smoked or simple lime-washed oak parquet, finely matched and skilfully combined, these floors can help us relive memories of our travels. Formats, colours, structures and laying patterns complement each other. With clear contrasts or subtle harmony, they speak of the world traveller's wanderlust, accommodating each new souvenir naturally.







*The large one-strip planks in warm light brown create a cosy atmosphere that invites you to stay a little longer and enjoy a coffee.*

Villapark, Oak slightly smoked Canneto







*Finally back home: The Oak Slightly Smoked colour looks pleasant and natural. The B-Protect® surface provides all the protective properties of an improved lacquering, preserving the look and feel of the wood.*

Villapark, Oak slightly smoked Crema, B-Protect®







*Pure harmony and relaxation: The parquet floor in Formpark Quadrato, Oak Natural, creates a cosy and comfortable atmosphere in the bedroom. Colour highlights in the popular “greenery” style turn the room into a true oasis of calm.*

Formpark Quadrato, Oak





*Slightly smoked oak provides a pleasant contrast to the light interior of the children's room. The Trendpark planks also create a spacious look.*

Trendpark, Oak slightly smoked





# TIMELESS ELEGANCE

Everlasting beauty and seductive allure

*Elegance is not dictated to by periods or styles of interior design – it can be abundant and grandiose as well as sleek and understated. Charming unusual artefacts ingeniously blur the lines delineating what is classic and modern whilst never losing their beauty.*

Precious unexpected treasures from the flea market, an elegant chandelier, casually draped fabrics, comfortable sofas, carefully selected designer objects – an expertly collated nonchalant collection of timeless elegance. Personal style takes precedence over the spirit of the times. Comfort instead of convention – the room is characterised by its grace and allure.

Depending on the type of wood and surface, the floor subtly underscores the elegance of the room or even becomes a defining piece of furniture itself. Oak Avorio with an exclusive laying type as a distinctive foundation for strong highlights, or the natural gloss of Oak Mandorla as a perfect addition to leather and chrome. Parquet adds and highlights: sometimes pointed, sometimes elegantly restrained. It forms an elegant harmony with classic Modernist furniture as well as straight-line modern installation, while always remaining timeless and durable.







*Exciting and unusual: From tabletops in faded gold and white marble to retro armchairs upholstered in “in lemon yellow”. The colour crema, the rustic grading and the format of the Studiopark boards are the icing on the cake. Thanks to B-Protect® surface treatment, the light floor is also very easy to clean!*

Studiopark, Oak Crema, B-Protect®





Casapark 221, Oak



*Parquet also provides pleasant warmth in the bathroom. The light shade of Oak Sasso, B-Protect® creates an exciting contrast with the dark tiled walls. Together with the stylish details, the bath becomes a retreat for moments of calm.*

Cleverpark, Oak Sasso, B-Protect®



*The light-grey parquet floor blends in seamlessly with the industrial-style kitchen. The planks that highlight the structure of the wood provide an exciting contrast to the smooth surfaces in this room.*

Villapark, Oak slightly smoked Nebbia

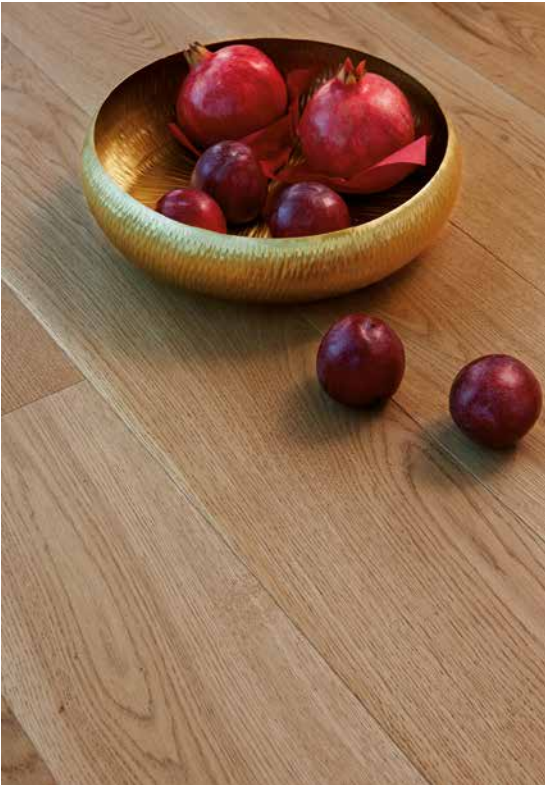






*The new colour Mandorla brings warmth into the black and white dominated interior design. Chromium steel, copper and gold accents.*

Villapark, Oak Mandorla





# UNEXPECTED TREASURES

Innovative ideas and great designs for living space



## 1. EXPERIENCING WOOD

The well-known Swiss wooden toy manufacturer Naef offers a beautiful wood collection box: 21 different kinds of wood with their typical grain and colour. A wonderful analogue alternative to the digital wood type overview at [bauwerk-parkett.com](http://bauwerk-parkett.com). It turns wood lovers into wood experts.

[naefspiele.ch](http://naefspiele.ch)



## 2. ELEGANT LAPTOP CASE

The adAktasche laptop case is made out of oiled beech wood, and can easily and securely accommodate a laptop, a tablet or documents. This stylish briefcase with a split leather belt is a real eye-catcher.

[design-ding.de](http://design-ding.de)



## 3. SUSTAINABLE DESIGN

“What approach would be conducive for good design?” This is the guiding question of the book written by the instructors at ecosign/Academy of Design about the history of sustainable design: an exciting read with fascinating concepts that are food for thought.

[ecosign.de](http://ecosign.de)



## 4. NATURAL WOOD SNEAKERS

Guided by the motto “Just Grow It”, French artist Christophe Guinet created “living sneakers”. He calls himself an urban gardener, making sculptures that look like sneakers with natural wood, soil, seeds, plants and flowers.

[monsieurplant.com](http://monsieurplant.com)



## 5. WOODEN ACCESSORIES FOR EVERYDAY LIFE

Designer Lille Grewe develops wooden home accessories under her label “kitschanmakeyourich”. Even with a focus is on aesthetics, playfulness remains an important element. The hand-made objects are not only elegant, but also practical; “Kroko” is one of them: The lowboard “gobbles” odds and ends such as magazines and books, and with the lid on, it can be used as a bench.

[kitschanmakeyourich.tictail.com](http://kitschanmakeyourich.tictail.com)





# Living *within historical* WALLS



White walls in combination with the light Cleverpark oak parquet create a calm and inviting atmosphere. The large double-sided roof windows provide natural lighting.



<b>HUCHLER BARN IN WAIBLINGEN</b>	<b>Product:</b>	Cleverpark, Oak Farina, B-Protect®
	<b>Architects:</b>	Coast Office Architecture
	<b>Builder:</b>	Private
	<b>Floor installer:</b>	Fussboden Haag
	<b>Photos:</b>	David Franck Photographie

- 1. | A NEW LOOK**  
The reserved façade give the former barn a modern and contemporary look.
- 2. | HISTORICAL WALL-WALK**  
The new development, accessible via black steel stairs, is parallel to the city wall.
- 3. | FUNCTIONAL STAIRS**  
The unique stair furniture, made out of stained local spruce, functions as a cabinet, a house bar and a storage room at the same time.



Protected historical buildings must be treated with a lot of sensitivity and respect: the history and the location both play a decisive role. Architects from the Coast office accepted this challenge. Looking for new premises for their Stuttgart office, Zlatko Antolovic and Alexander Wendlik found a 17th-century barn in Waiblingen that had been empty for years.

Great care and attention went into creating this residential and office building. The 6-storey half-timbered building is special not only because of the historical city wall that partially acts as an external load-bearing wall for the building, but also because of the steep 55-degree gable roof. The first two floors are used as office space. Black steel stairs along the city wall and the wall-walk lead you to a new flat for the Antolovic family. With four floors and some 150 square metres, this historical 300-year-old barn is home to impressive spaces. Natural materials, black-varnished steel elements and warm colours dominate the interiors. White walls blend in with the light Cleverpark Oak Farina parquet. The long planks without bevels create a spacious look and an open living and dining area, as well as provide the children's rooms with a cosy and calm atmosphere. In addition, the parquet floor is improved with the B-Protect® surface treatment. The innovative B-Protect® coating comprises multiple layers of invisible lacquer, completely sealing the surface of the parquet. A loving attention to details, like the gently cleaned and untreated ceiling beams, or the delicately integrated city wall, are a reminder of days gone by, creating a unique ensemble of old and new when combined with new modern elements.



**APARTMENT**  
**“IN DER EY,”**

**Product:** Cleverpark, Oak Crema, B-Protect®  
**Architects:** atelier WW  
**Builder:** ERSIAN AG  
**Floor installer:** Bühler & Partner  
**Photos:** atelier ww / Simone Vogel, 379.ch

# Green OPEN SPACES and city LIFE



*The ww architectural firm has completed the “In der Ey” project at the foot of Uetliberg in Albisrieden. The four family-friendly apartment buildings house spacious flats with rooms that look even larger and transition smoothly thanks to Bauwerk parquet.*



The Albisrieden district of Zurich is dotted with many green areas and terraced buildings from the 1950s. The vicinity of the city centre and the Uetliberg recreation area make this neighbourhood a popular place to live. Many of the old buildings must now be replaced. This creates more living space and the new building structure can be adapted to the needs of its new residents.

The developer made high-quality materials, well-organised floors and family-friendly interiors a priority. Thus, the architects chose Bauwerk Parkett's Cleverpark, Oak 14 Crema, B-Protect® parquet (a total of 7,200 square metres) for the flooring. Parquet floor was a clear requirement of the developer, and the residents are happy to have a natural floor that highlights the warm atmosphere of the interiors. “For us, parquet floors are a must,” says an architect couple, who will reside in the new building with their daughter. “The floors must also be easy to clean (because of our child, mostly), and the colour of the parquet contributes to a friendly living environment.” Thanks to floor heating, it's always pleasantly warm here, even if you're barefoot,” the family said happily. The almost invisible lacquer protects the floor from dirt, and is very easy to clean. The unified floor covering styles also make it possible to create smooth room transitions, without thresholds that increase the risk of tripping. The “In der Ey” residential complex offers an ideal family-friendly design.



APARTMENT AMSTERDAM	<b>Product:</b>	Formpark Quadrato Oak Crema, B-Protect®
	<b>Builder:</b>	Private
	<b>Floor installer:</b>	Vloerenhuis
	<b>Photos:</b>	Charlotte Kap Fotografie

# OPEN TO THE WORLD

*life through spacious windows*

Life in the Netherlands spills out into the street, a phenomenon that is widely accepted. The seafaring nation is traditionally cosmopolitan, and the tendency towards openness even carries over when it comes to home interiors.

This approach can be seen in this new building where modern living manifests classically in the room atmosphere. The room pictures change depending on the view angle, and are surrounded by dark door and window frames. The spacious layouts create a sense of living in a loft. The colour palette is reserved, elegant and modern. Functionality and cosiness are complemented by the calm character of wood, textiles, light walls and cream-coloured parquet. This green appearance, however, can also be flashy in day-to-day life.

But don't miss the floors: they also have a lot to offer. The Formpark Quadrato format is as simple as it is irresistible: it is enhanced with individuality, with countless patterns that change depending on how the light falls. Herringbone from the aristocratic villa is perfect in this modern flat, impressively referencing the classic laying pattern.



*The new interpretation of the classic herringbone is trendy now. Much can be done with this simple and timeless foundation.*



<b>CITY</b> <b>APARTMENT</b> BERLIN	<b>Product:</b> Formpark, Oak smoked, natural oiled <b>Builder:</b> Blakey <b>Floor installer:</b> S.W. Parkettdesign <b>Photos:</b> Olaf Szczepaniak, Hamburg
---	---



## Personally DESIGNED

There is an apartment building with 12 flats built in 1994 in the noble and popular locality of Grunewald in the western Charlottenburg-Wilmersdorf borough of Berlin. The neighbourhood is known for its magnificent villas and some prominent residents. It was in this sophisticated environment where the owner of the property worked with architects to develop, with much attention to detail, a unique project of some 240 square metres.

An open layout, and a cosy and comfortable atmosphere were particularly important for the owner. On the ground floor, there is a spacious dining area with an open adjoining kitchen. Floor-to-ceiling panorama windows and large skylights provide bright natural lighting, offering a panoramic view of the surroundings. A striking flight of stairs leads to the gallery in the living area. Designed by the owners, its steps are attached to the wall and seem to be floating. The Formpark Smoked Oak parquet floor, deep brushed and natural oiled, was used for these special stairs and throughout the rooms. The valuable wood and its diverse laying patterns underscore the modern design. A special feature of this parquet lies in two plank formats of different widths, creating countless laying options. A combination of noble wood and select matching materials, such as chrome, emphasises the individual character of the residents and creates a unique atmosphere.

*“The different laying patterns of Formpark underscore the unique character of the flat.”*

# Heaven and *EARTH*

The apartment building in Bellinzona adopts the typology of the surrounding buildings, while simultaneously reinterpreting it. The building’s architect, Leonardo Modena, gave it a modern look with the black brick-style Eternit façade. This effect is enhanced by striking bronze-coloured window frames. The irregular locations of the windows is another key element in the contemporary look of the building.

Because there is only one flat on each floor, sunlight is unobstructed throughout the day, hence the name of the project: Mirasole. The intimacy of the living areas was an important aspect for the architect, which is why he decided to use loggias. They provide a subtle connection with the outdoors. The patios also act as an extension of the living space.

When designing the interiors, Modena opted for high-value materials. The longplank in Megapark oak smoked radiates a dignified atmosphere. The white colour used for all the interiors and inner stairs provides a beautiful contrast that leaves a lot of space for creative interior design. In the top-floor duplex flat, these contrasting materials emphasise the opposition of heaven and earth.





# STAIRS

*stylishly integrated*



Reference: Walenstadt house



Reference: City apartment Berlin

Stairs have long ceased to be only the direct path to the upper floor. Rather, they are a detail-rich design element for an optimum spatial effect. The decisive factor is not only the architecture of the staircase and its construction, but also the configuration. The stair solutions made in Switzerland have a decisive advantage: the parquet floors and stairs have the same colour and surface treatment as well as the same degree of gloss.

#### Custom Design

The main job of a staircase is to provide a safe and comfortable bridging between levels at different heights. There is a multitude of possible staircase geometries that can greatly influence the style of the architecture: from straight staircases to winded versions in combination with stair treads made of solid wood or parquet. The result is individual solutions – perfectly tailored to your wishes.

#### Innovative production technique

All stair solutions are manufactured in our Swiss parquet factory in St. Margrethen. A new and unique production technique makes it possible to crease the stair noses without damaging the surface. This offers decisive advantages: consistent surface treatment and the same edge protection as in the parquet.



Reference: Burgdorf house





With the help of large sample panels, one can get a good impression of how the parquet looks in a larger surface.



The configurator places your dream parquet in the rooms you have selected. This way, you can compare many parquet floors in different home styles. The parquet configurator is also available online.

# FEELING parquet *getting one-on-one advice*

Buying parquet means making many decisions. If you are interested in building, rebuilding or expanding a parquet floor, visit one of our numerous Bauwerk parquet worlds.

There is nothing better than a personal conversation with our experienced parquet consultants. They will be happy to answer any of your questions about parquet and about your personal wishes with no obligations.

In an inspiring atmosphere, you will experience various parquet floors and innovative consulting tools. You will see the interplay between the type of wood, the laying direction, wall colours and home styles. In our parquet worlds, you can also combine the parquet floor with various materials, carpets or tiles to see and feel their interaction and effect.

All the parquet worlds can be found on page 88 of this artwork brochure

## Bauwerk ID – setting a sign

Your Bauwerk floor is one of a kind, a genuine part of your living environment – manufactured by Bauwerk in accordance with top quality standards, carefully selected by you and professionally installed by a specialist. Since we consider the longevity of our floors to be a central quality feature, we have now created a special Bauwerk ID which will act both as a lasting sign of our quality approach and as a seal of quality that allows us to assist you with all floor maintenance activities. This process is sealed with the individually numbered Bauwerk ID. Once you have registered your product, you can rest assured that you have taken all necessary steps to ensure optimum care and maintenance of your floor.

## Attractive guarantee package for registered floors

Your Bauwerk ID will come with an attractive guarantee package that includes the following benefits:

- › Bauwerk ID made from aluminium, with personal identification number(Registration of a maximum of two different products)
- › 10-year product warranty after successful registration
- › 1 set including a cleaning and care product suitable for your parquet
- › Specific cleaning and care advice for your floor

To activate the extended guarantee, enter the number on your Bauwerk ID at [bauwerk-parkett.com](http://bauwerk-parkett.com) and complete the online form. Once the Bauwerk ID has been registered and installed, the extended guarantee for the Bauwerk product becomes legally binding.

The Bauwerk warranty package is a complete worry-free package, guaranteeing healthy living, providing correct cleaning and care products and a product warranty of 10 years.





# NEWSWERK

## ROSA OFFERS EVEN MORE HELP: CONCENTRATED EXPERT KNOWLEDGE OF BAUWERK PARKETT



Do you have any questions about cleaning and taking care of your parquet floor? Rosa will be happy to share the long-standing knowledge and experience of Bauwerk in parquet cleaning and care. There is an expert tip for every situation and for every floor — be it lacquered or not. With these, cleaning and taking care of your parquet will become even simpler, and you will enjoy your high-quality Bauwerk parquet floor for a long time.

Check out the videos on our Youtube channel or on our website:  
[putztipp.bauwerk-parkett.com](https://putztipp.bauwerk-parkett.com)



## 3 NEW WORLDS OF PARQUET

In its worlds of parquet, Bauwerk Parkett presents a broad selection of products and offers individual and non-binding consulting. Now, you can see our parquet floorings both in the Swiss city of Aarau and major European cities such as Paris and Frankfurt am Main. Be it in a small town, or a metropolis: we provide a generous, inspiring atmosphere and, first and foremost, competent parquet consulting.

Image: World of parquet in Paris  
29 Quai de la Tournelle, 75005 Paris



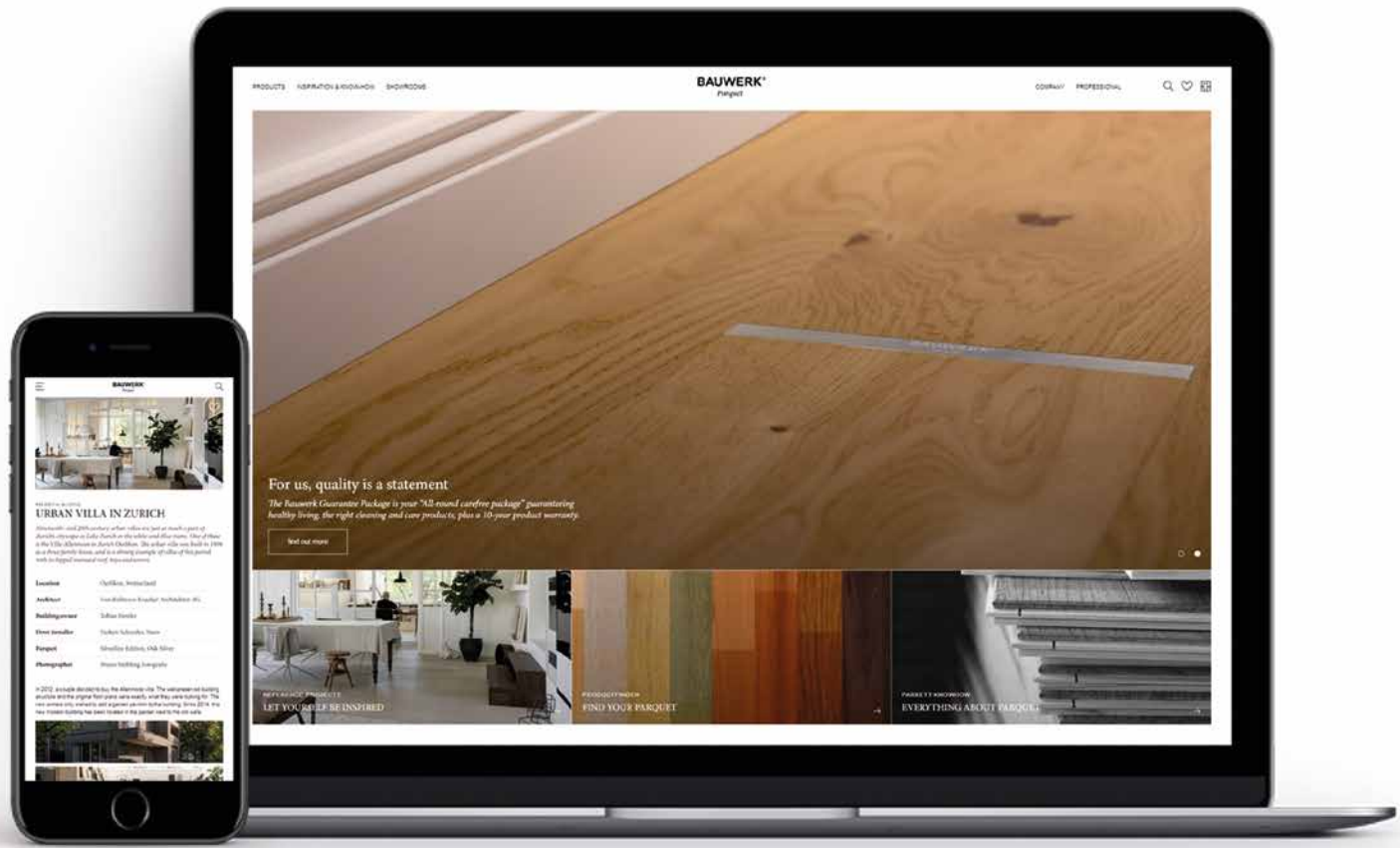
## DIGITAL EXPERIENCE PLATFORM

We have completely redesigned our website, [bauwerk-parkett.com](https://bauwerk-parkett.com), for you. The new digital experience platform will guide you step-by-step in choosing your parquet floor. In addition to new exciting knowledge about parquet, there is a focus on the topic of “inspiration”. Countless reference samples and stories with excellent pictures will help you find ideas for parquet that fit your lifestyle.

Our new interactive and intuitive tools will help you navigate our large selection, allowing you to limit your search to the parquets that suit your needs: with the parquet finder, it is very easy to select products: light or dark, small or large, for a basic or premium budget.

With the “My Bauwerk project” function, you can also ensure that nothing is lost when you are looking for an appropriate parquet floor: if you click on the heart symbol (always visible throughout the site), you will save the images and products directly in your list of favourites. Thanks to the new price estimation calculator, you will immediately see the price range of your favourite products and get a realistic cost estimate for your project.

Discover it for yourself: browse our online world of parquet and start your Bauwerk project at [bauwerk-parkett.com](https://bauwerk-parkett.com) today.







# HEALTHY LIVING & Sustained

Bauwerk’s “Healthy Living” mark of distinction makes a significant contribution to your quality of life. Once you take a conscious decision in favour of healthy building materials, you have taken a big step towards personal well-being in your home.

**Guaranteed healthy living**

Thanks to its Sentinel Haus certification and Cradle to Cradle Certified™, Bauwerk can offer home builders and their families a unique guarantee: Bauwerk products will never have a negative impact on their health. Bauwerk thus stands for a beneficial, healthy atmosphere in your home.

**Why this is important**

We spend 80 to 90 percent of our lives in closed rooms, breathing in 10 to 20 cubic metres of air per day. Although airtight building envelopes make sense in terms of energy, ventilation is so far reduced that harmful substances may collect from a variety of sources. Approved building products are therefore an absolute must if we want to ensure a healthy room atmosphere. Together with the Sentinel Haus Institut, Bauwerk has been testing its products since 2010.

**Is parquet healthy per se?**

No. Although wood is a natural, renewable raw material, the manufacture of parquet involves glues, varnishes and oils. All materials used by Bauwerk meet the highest standards and are regularly tested by independent institutions in different countries.

**Invisible but measurable**

High health standards in homes are not reached by accident, they can be planned and measured. Aside from pollutant-free ambient air and pleasant acoustics, parquet has further plus points: there is no static charge, it feels warm under cold feet and it remains pleasantly cool on hot summer days.

**Because we care about people and nature**

Anyone who works with wood develops a special feel for nature. We also care about people, be they our employees, suppliers or clients. Bauwerk Parkett generally seeks win-win situations for people, the environment and the economy, because they are a model for the future. With the motto of “Symbiosis between humans and nature” , Bauwerk is committed to improvements in environmental responsibility, healthy living and social ethics. Bauwerk Parkett has developed a roadmap with initiatives for the coming years based on the GRI standard for sustainability reporting. This required setting specific goals and metrics for all business processes. Until 2019, particular attention will be devoted to the following aspects:



- › *Emissions and climate change:* Only processing wood from sustainable forestry sources and reducing emissions into the natural basic content of the raw material.
- › *Resource efficiency:* Avoiding pollution in the entire process, imitating natural cycles in product lifecycles and manufacturing processes.
- › *Ecological and sustainable supplier management:* Selecting suppliers according to sustainability criteria, working with suppliers according to principles of sustainable and fair business relations with social responsibility.
- › *Healthy and satisfied employees:* Offer employees a safe workplace and be a reliable, fair and responsible partner for them.
- › *Healthy living:* making high-quality parquet floors as well as accessories that are healthy, i.e. natural, quiet and controlled.

**Cradle to Cradle®**

## When the cycle is closed

As the first and only wood flooring manufacturer, Bauwerk boasts the Cradle to Cradle Certified™ Gold for all Silente parquet floors. In addition, all the products manufactured at the production site of St. Margrethen are Cradle to Cradle™ Bronze certified. Bauwerk has thereby succeeded, as the world's first company, to certify all the products from one production site. The process required five years of hard work and the review of the entire supply and production chain.





A glimpse into our parquet production

# THE WAY OF PARQUET

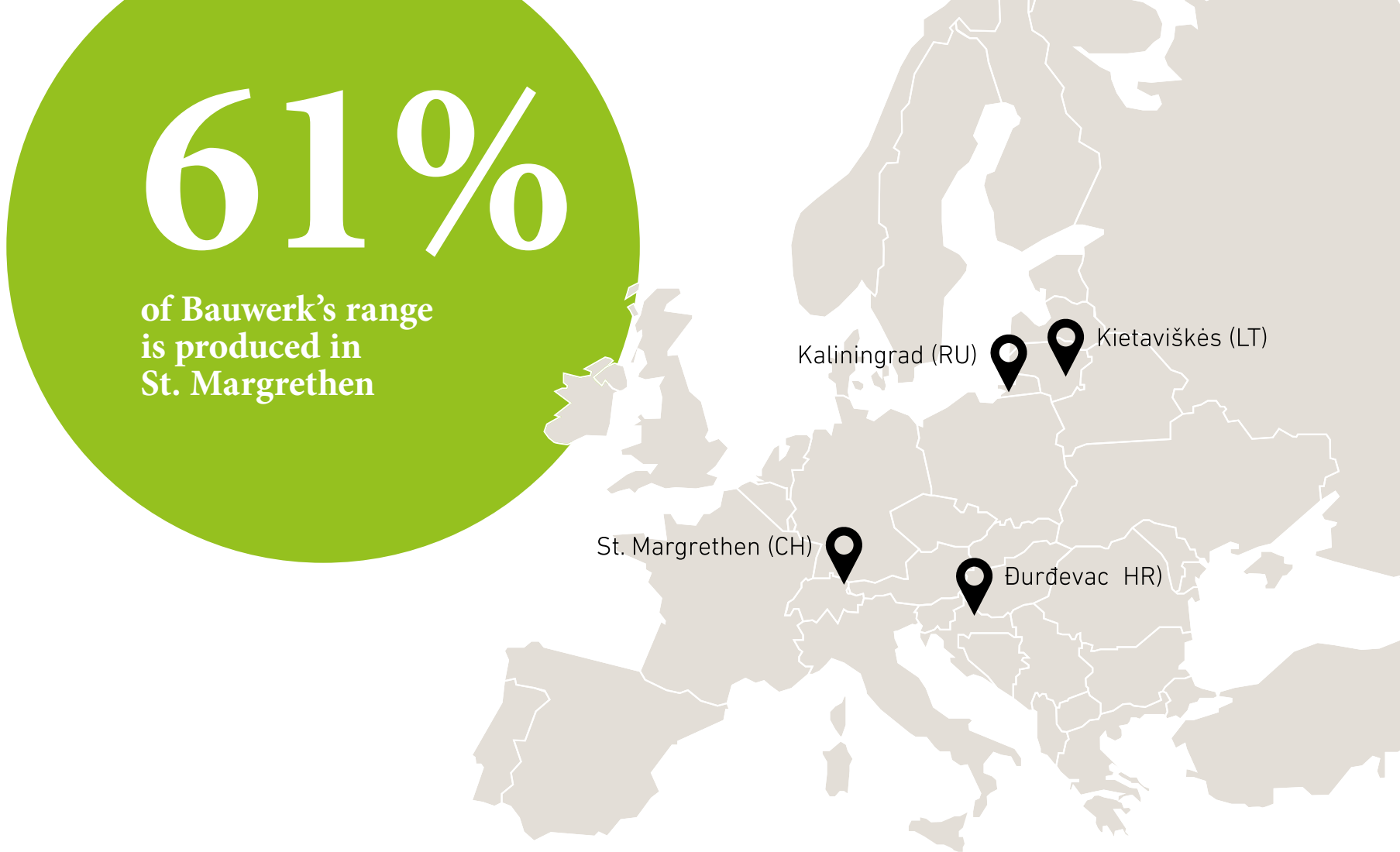
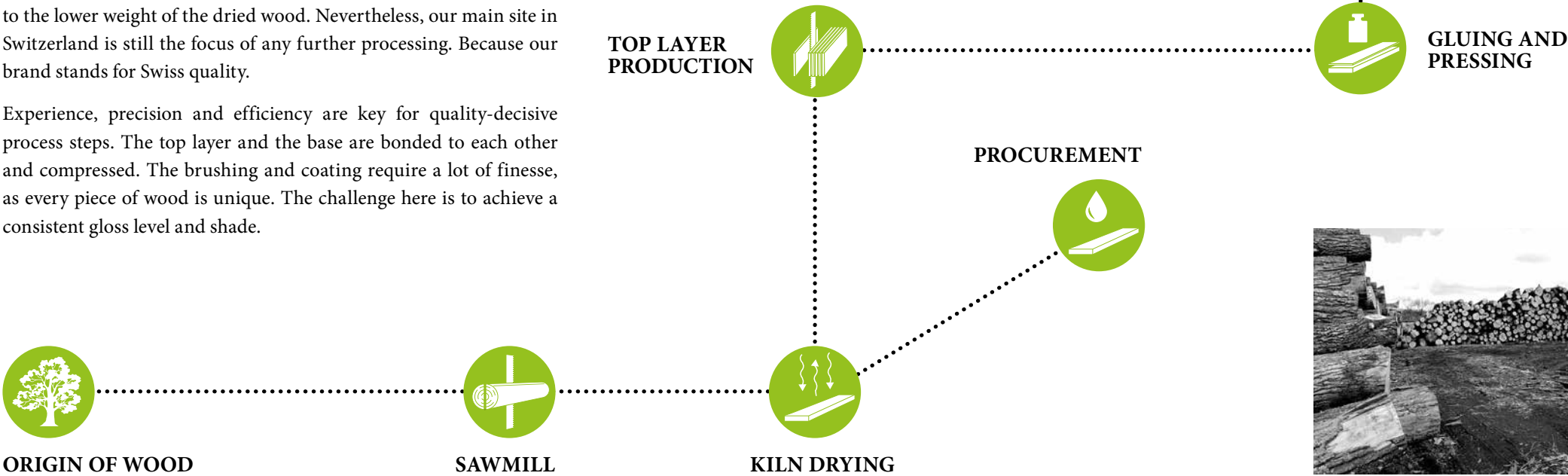
We have been producing parquet with reliability and precision to meet the highest demands for more than 80 years, and we are proud of our Swiss origins. The way from tree trunk to round timber to finished parquet is long, but well thought out. We value quality in every aspect.

The sustainable and safe procurement of the demanded raw materials is extremely important for us in guaranteeing Bauwerk's top quality. Thus, for example, 97 per cent of the wood we process comes from Europe, and only 3 per cent from North America (e.g. walnut). A third of our demand for timber is covered by our own sawmills in Russia, Lithuania and Croatia. As a result, Bauwerk is involved in all stages of the entire process and possesses the necessary expertise.

Since 2017, we have been carrying out raw-material-oriented processing steps, such as kiln drying and cutting of lamellas, only in the growth areas. This way, it is possible for us to usefully create value in the country of origin, causing less environmental pollution due to the lower weight of the dried wood. Nevertheless, our main site in Switzerland is still the focus of any further processing. Because our brand stands for Swiss quality.

Experience, precision and efficiency are key for quality-decisive process steps. The top layer and the base are bonded to each other and compressed. The brushing and coating require a lot of finesse, as every piece of wood is unique. The challenge here is to achieve a consistent gloss level and shade.

Final processing includes profiling and edge treatment: precision is required here so that the planks can be laid together quickly and without difficulty at the construction site. As a final quality inspection, the planks are manually checked and sorted if necessary. The parquet is then neatly packaged to protect it against humidity. This way, 61 per cent of the Bauwerk range of products is currently produced at the St. Margrethen site, which is not going to change in the future.



## A WORD FROM...

**Martin Schönenberger,**  
Director of Wood Procurement Bauwerk Boen Group

*What are the challenges of procuring wood?*

In recent years, the demand for oak has been constantly growing. Oak parquet forms about 96 per cent of Bauwerk's sales. This obviously creates a challenge for its procurement — exactly because this trend is noticeable in other industries. Hardwood is generally harvested in winter. The trees go into a kind of hibernation, having a lower water content, with a positive effect on quality and storage. Additionally, frozen soil allows for more gentle transportation. However, this also requires a lot of preliminary work in planning and a great deal of experience.







---

Bauwerk, a Swiss company with a long tradition, has been applying its skills, precision and passion to manufacturing beautiful top-quality wooden floors since 1935. One of the leading European parquet manufacturers, Bauwerk offers its customers a comprehensive and innovative range of products that stand for healthy living and conscious design of the personal living environment.

*bauwerk-parkett.com*

**BAUWERK®**  
*Parquet*

---