



INSTALLATION & MAINTENANCE

How to install, clean and maintain Floover



OUR COMPANY

The history of Floover began to take shape in 2006 with the union of Andrea Prati and Joan Ferrer, friends and co-owners with extensive experience in the flooring business. Based on the needs and requests of their customers, they developed a new product, Floover, multilayer rigid flooring with designs based on high-end vinyl with the Unilin click system. Later, they developed other versions and incorporated waterproof unlimited designs with remarkable success.

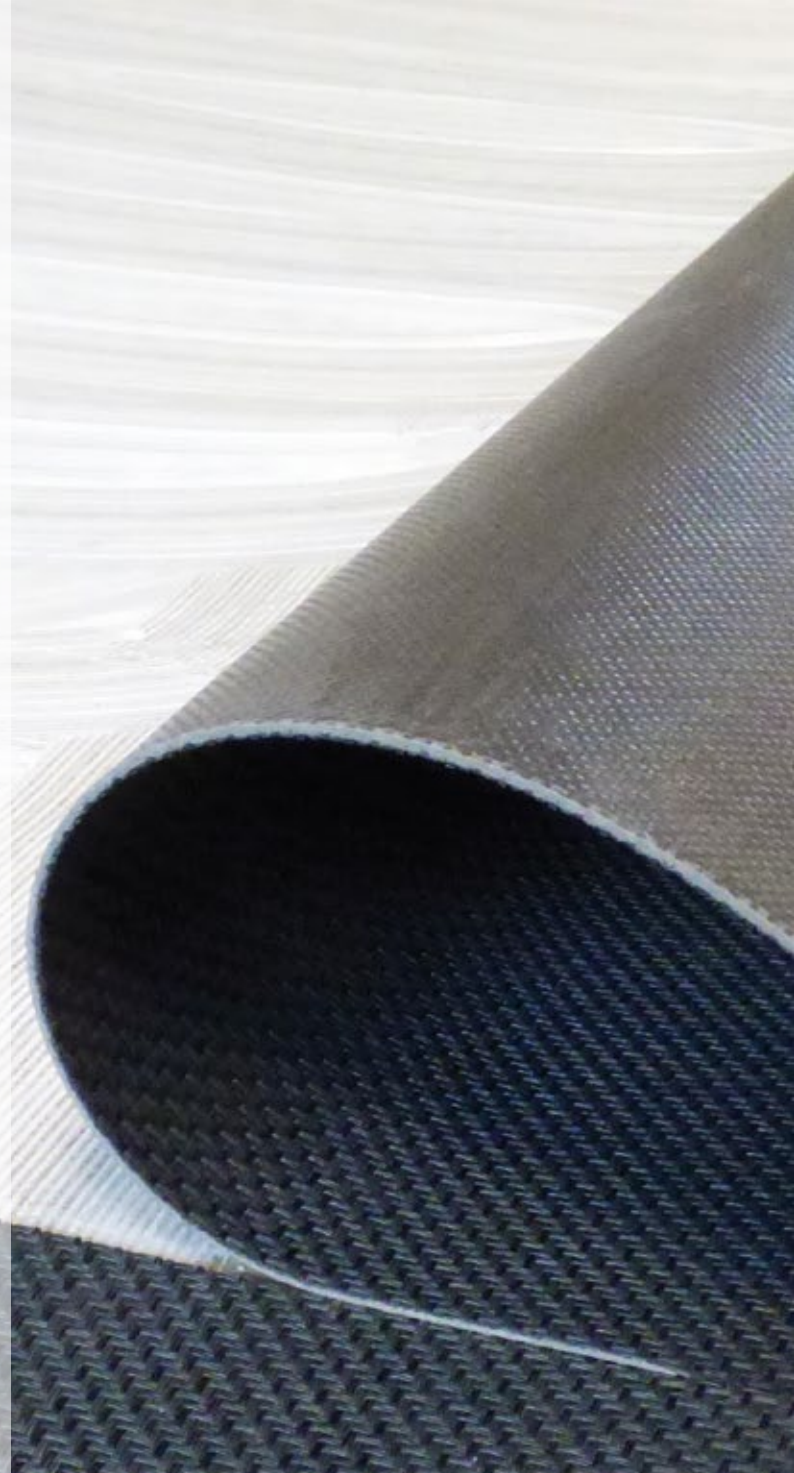
The aim of Floover is the continuous search for new and amazing products always based on the latest design and fashion, intending to improve the quality of life. Innovation and imagination have always been the basis of the brand and are key to its reputation in the market place, involving designers and architects to provide added value to the product. To date, Floover has achieved significant international presence.

OUR PRODUCTS

Floover's production is mainly located in Müstair, Switzerland, where the entire production process complies with Swiss law and with the European norms and standards, in addition to the very strict quality controls.

Floover provides products for both domestic and commercial use, always using new technologies and creating solutions demanded by the market, from gluing systems (Glue Down), through the floor with click system, to exterior solutions. All Floover products are easy to install and are specifically designed for high durability and longevity. All this is complemented with accessories needed to complete any project.

The extensive collection of designs can be installed in any space, including wet areas like bathrooms or terraces, Floover is the ultimate solution to your project.



CLICK SYSTEM



INSTALLATION (HDF, HDF LIGHT, SPLASH20, SPLASH20 LIGHT AND SPLASH20 DESIGN)

BEFORE INSTALLATION

Before, during and after the installation, the room must be preserved in paragraph ambient conditions delineated in the "air-conditioning".

Before the installation, make sure the product has not been damaged during transportation. Damaged material will be not replaced once installed. Check the product in the daylight and if any manufacturing defect, wrong colour or brightness is found during the inspection, please immediately contact the retailer from which the flooring was purchased. Complaints on any flaws should be made prior to installation.

Some differences of colour and structure are due to the nature of the material and so they cannot be an object of a claim. As with all natural products once exposed to sunlight or some chemicals there is a possibility that there will be some minor alteration in the colour. Also, once the product is subjected to extreme ambient conditions of temperature and/or humidity some modifications of the dimensions of the board can occur between (0,15% and 0,30% dilatation). Damage due to misuse of the material will be excluded from the warranty.

Also, once the product is subjected to extreme ambient conditions of temperature and/or humidity some modifications of the dimensions of the board can occur between (0,15% and 0,30% dilatation).

Surface base: All surfaces where the product has to be fitted, must be predisposed to the laying, following principles in respect of the actual normative, in particular the requisites will be:

1. Dry and without humidity. (Cement subfloor <2.0% CM – anhydrite <0.5% CM).
2. Level (with differences of level of max. 2 mm for one meter).
3. Compact and resistant screed.
4. Clean and without crusts and dust.

For levelling the base it is recommended to use a self-levelling compound with a previous primer.

AIR-CONDITIONING

The floor must be conserved at a temperature of the environment in which it will be laid for 48 hours before the fitting. The ideal conditions are 20°/22°C of temperature and 50- 60% of humidity.

FUNDAMENTAL NORM FOR THE INSTALLATION

Place a layer of PE-film of 0,2mm thickness on the entire installation area, which acts as a "Barrier of Vapour". Also recommended in SplashH20 to avoid bad odours and smells and liquid filtrations. The joints of the different PE film sheets must be

placed upon each other for min. 300 mm at least.

The flooring must always be fitted in a floating way, without glue to the below surface or anchorages of nails or screws.

Maintain a distance of 10 mm from all the fixed structural works at the edge of the perimeter.

Under doors, in long corridors or surfaces with length superior to 12 m or width superior than 10 m 120 m², you have to consider the use of dilatation joints (HDF/HDF Light: 15 m length – 10 m width / 150 m²).

The profiles of the doors must be cut at the high of the flooring. Our range of indoor products is suitable for all types of spaces. SplashH20 version is recommended for wet areas such as kitchens, bathrooms or SPA rooms.

In areas near to large windows or glass fronts, the impact of sunlight can create temperatures on the flooring of up to 60°C that can create higher dilatation. Floover recommends HDF or HDF Light instead of SplashH20, SplashH20 Light or SplashH20 Design and the use of curtains to minimize the heating of the flooring.

INSTALLATION

For the beginning it's necessary to have polyethylene film and adhesive tape that is important as insulating against the vapour.

The essential tools are: metre, pencil, saw, hammer, sealing, level, spacers, a shunting tool and a nylon tapping block.

Open the packs only when you install the flooring and mix the boards of the different boxes. With Woven range, do not mix boards of different production lots and finish the material from one batch before using the next one.

1. Start to install the first row from a corner of the room using the spacers to leave a distance of 10 mm, necessary for the dilatation of the flooring.
2. If possible, install the planks in the same direction as the light in the room.
3. Join the short edges of the boards of the first row laterally with a movement of 15-20° until hearing the click of closing and line up using the spacers.
4. Cut the board necessary to complete the first line and save the not installed piece.
5. After having lined up the first line of boards, lay the second line using the remaining piece of the last board of the previous line. Install the first board of the second line lightly in diagonal as indicated and fix it, balance it lightly.
6. The short joints of the boards between two different lines, must be offset of 300 mm at least (stagger).

INSTALLATION (HDF, HDF LIGHT, SPLASH20, SPLASH20 LIGHT AND SPLASH20 DESIGN)

7. Proceed in the same way with the second board and position the frontal part of this last one against the first one. Use a tapping block and a hammer to join the boards of the same line.

8. To install the last line of the boards measure the remaining distance between the wall and the last line. Cut the boards in the length and lay them.

Note: When you use a tapping block (min. 20cm long) to click or put together the short edges do not put the tapping block against the tongue. Put the tapping block against the groove or the over lip from the tongue side, otherwise you can damage the tongue.

The distance from the wall and from all the stable elements must be of 10 mm at least. (Minimum 1,5 mm for every metre of width in the larger room). Do not place heavy furniture on the flooring; it can block its natural movements.

The click installation system allows you to remove your flooring in any moment without any damage and re-install it following the initial instructions.

AFTER LAYING

Remove the spacers after the complete laying of the flooring. Apply felt pads under the tables, chairs, etc... When you move heavy furniture, lift them and do not trail them. The office chairs must have soft polyamide wheels in respect of the

norms.

Skirting, profiles, maintenance tools and cleaners are very important accessories. Your retailer can suggest and show you a large range of accessories available. Protect your floor in future works.

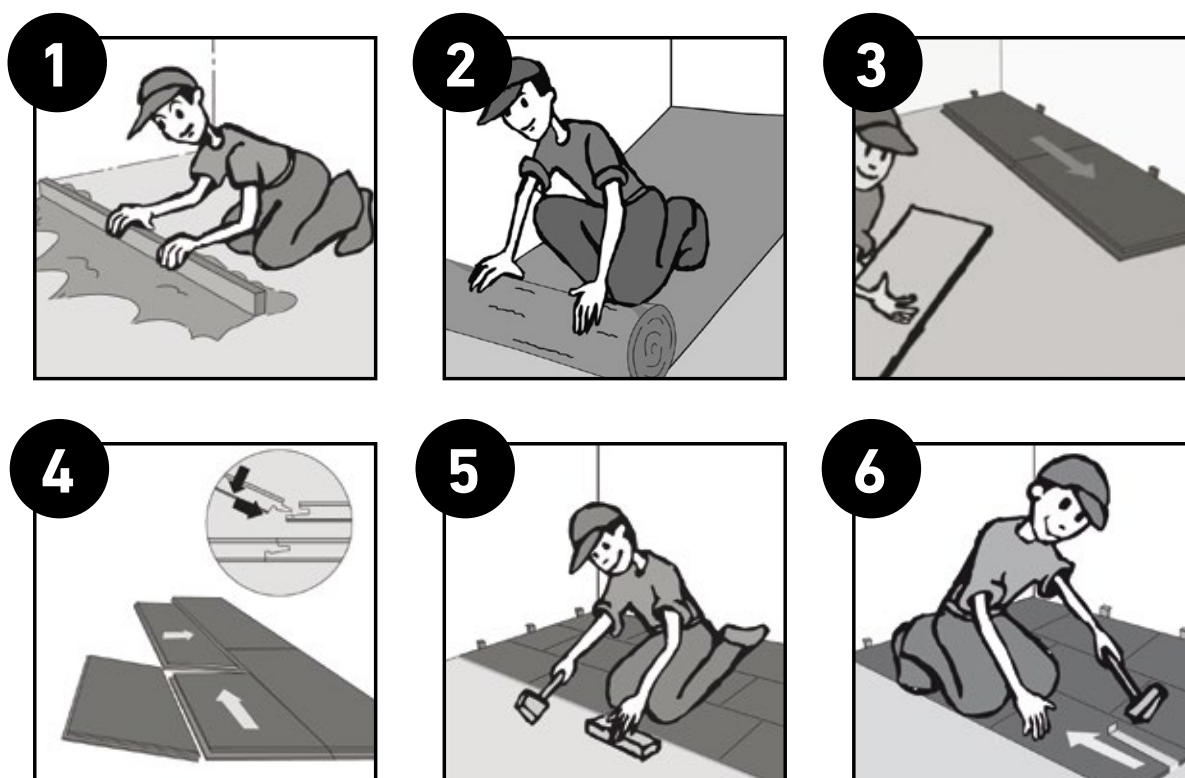
CLEANING AND MAINTENANCE

Clean the floor with a humid cloth after the laying and before the fitting of the skirting. For daily cleaning, use suitable cleaners as Floover Cleaner. Depending on level of use the flooring must be cleaned at regular intervals with an intensive cleaner, never wet but humid and well squeezed. Avoid the stagnation of water over HDF products.

The duration of your floor doesn't depend only on the use, but also from the maintenance and cleaning. Use only suitable products and follow our indications. Do not use aggressive essences with glycerine because they can attack the surface.

UNDERFLOOR HEATING

When it is installed on floors with under floor heating system, the temperature of surface cannot be higher than 28°C. A heating protocol is required. Floover products are also suitable to be installed over underfloor cooling systems as far as there is no humidity created by condensation.



LVT GLUE DOWN

INSTALLATION

BEFORE INSTALLATION

Before, during and after the installation, the room must be preserved in ambient conditions delineated in the paragraph "air-conditioning".

Before the installation, check that the product has not been damaged during transportation.

Damaged material will be not replaced once installed.

Due to the nature of the material there might be differences of colour and structure which cannot be an object of a claim.

As with all natural products, once exposed to sunlight there is a possibility that there will be some minor alteration of the colour.

Please make sure all flooring products are from the same item collection and made from the same lot.

Immediately after installation, and before fitting the skirting, clean the floor with a damp cloth.

When you clean the floor for the first time, use special maintenance cleaner for PVC. Depending on level of use the flooring must be cleaned at regular intervals with topic cleaner.

Surface base: All surfaces where product has to be fitted, must be predisposed to the laying, following principles in respect of the actual normative, in particular the requisites will be:

1. Dry and without humidity.
2. Level (with differences of level of 3 mm for one meter at least).
3. Compact and resistant base.
4. Cleaned and without crusts and dust.

AIR-CONDITIONING

The floor must be conserved in the temperature of the environment in which it will be layed for 48 hours before the fitting. The ideal conditions are 20°/22°C of temperature and 50- 60% of humidity. The installation process must be done at a temperature no lower than 15°C.

Open the packs only when you install the flooring and mix the boards of the different boxes (With the exception of Synchro Endless).

Our products are laid by gluing onto any dry and clean surface. To reach a better adhesive result, please choose proper glue for different using areas and always follow user guides from the supplier. For low to moderate levels of traffic we recommend an acrylic high quality glue such as Mapei Ultrabond ECO800 or similar.

INSTALLATION

The essential tools are: meter, pencil, level, floor roller.

Before installation, we recommend drawing a draft of laying plan always positioning the boards in longitudinal way as regards to the light.

Spread the adhesive out and allow it to aerate.

After having lined up the first line of boards, lay the second line using the remaining piece of the last board of the previous line.

The joints of the boards between two different lines must be offset of 30 cm at least.

Cut the profiles of the doors at the height of the flooring.

For the installation of the last line of the boards: measure the remaining distance between the wall and the last line.

We suggest cutting all the edges of the pieces before applying the glue.

After installation, use a floor roller to run over the joints, vertical and horizontal way.

AFTER LAYING

Apply the felt pads under the tables, chairs etc. Please lift heavy furniture, to avoid trailing marks. The office chairs must have soft polyamide wheels in respect of the norms.

Skirting, profiles, repairing tools and detergents are very important accessories. Your retailer can suggest and show you a large range of accessories available.

UNDERFLOOR HEAT SYSTEM

When it is installed on floors with under floor heating system, the temperature of surface cannot be higher than 28°C. A heating protocol is required.

LOOSE LAY ANTISKID

INSTALLATION

BEFORE INSTALLATION

The installation area must be climate controlled for at least one week before installation, during installation, and continuously after installation. Proper conditions are between 18-29° C. This product is not suitable for installation in non-climate controlled areas such as covered decks, porches or outdoors.

Acclimate the product to the climate-controlled location's temperature for a minimum of 48 hours before starting installation. It is important that the flooring be the same temperature as the area it is installed in.

Pull planks from different cartons when installing to ensure a pleasant blending of colors from possibly different production runs. Slight color variations are normal and expected between print runs.

This loose lay product is for installing in the interior of any building with minimal adhesives, as long as the subfloor has been prepared to the standard as stated in Subfloor Conditions.

Tools Needed: Utility Knife, Carpenters Square or Straight Edge, Tape Measure. If using adhesive, follow adhesive supplier's instructions.

SUBFLOOR CONDITIONS

Subfloor preparation is very important for a successful installation. Roughness or unevenness of the subfloor may telegraph through the new floor. All subfloors should be smooth and flat with a tolerance of 3 mm over 1,8 m or less. All subfloor and underlayment patching must be done with a non-shrinking, water-resistant Portland cement type patching compound.

Product can be installed over most existing hard-surface floor coverings provided the existing floor surface is smooth or can be made smooth. Existing floors must be solid. Fix any loose areas. Deeply embossed existing resilient floors require the use of an embossing leveler to avoid telegraphing to your new floor. Heavily cushioned vinyl flooring or vinyl flooring consisting of multiple layers are not suitable subfloors for installation.

Concrete subfloors must be dry, smooth and free from dust, solvent, paint, wax, grease, oil, asphalt sealing compounds and other extraneous materials. The surface must be hard, dense, and free from powder or flaking. The floor should have a moisture reading of less than 75% RH. New concrete slabs must be thoroughly dry, at least six weeks old and completely cured. The final responsibility for determining if the concrete is dry enough for installation of the flooring lies with the floor covering installer.

Holes, grooves, expansion joints and other depressions must be filled with a Portland cementbased underlayment and troweled smooth and feathered even with the surrounding surface. Concrete floors with a radiant heating system are allowed as long as the temperature of the subfloor does not exceed 27°C at any point. The heating system should be covered with a self-leveling underlayment separating the flooring from the heat source by at least 12 mm.

Ceramic tile must be made smooth by applying a cementitious overlay such as patching or leveling compound.

All wood and wood composite panels, including plywood, OSB, flake board and particle board are acceptable subfloors as long as they are dry, smooth, flat, structurally sound and free of deflection. Joints should be sanded if they exhibit peaking.

In metal and Painted Floors remove any loose paint or ether finishes. Existing adhesive residue must be removed or encapsulated. Never scrape adhesive residue that may contain asbestos.

INSTALLATION REQUIREMENTS

- a) Before installation, make sure the subfloor is dry and dust free.
- b) Flooring should be laid directly against walls, fixed with a bead of silicone after installation completed. Open transition areas with no wall to lay against should be fixed with 10 cm wide adhesive.
- c) It is important for outer planks to fit snug against the wall or cabinets (fixed items), otherwise a 10 cm wide strip of tape or adhesive is required to hold the perimeter in place. It is better to fit tight against any baseboard or trim. If there is no baseboard and the sheetrock does not extend to the floor, then adhesive is required.
- d) Make sure each plank is fit tightly to the next piece. Very light tapping to get a tight fit is fine, but take care not to compress the plank you are tapping into. Firm and tight is correct, overly tight will lead to compression and later peaking joints when the compressed planks try to return to normal length or width.

PLANKS INSTALLATION

1. Decide how you want the floor to run. Plank products usually look best when they run the length of the room. This is all a matter of preference, though, so feel free to lay some planks in different directions to see which way looks better.

LOOSE LAY ANTISKID INSTALLATION

2. To avoid narrow plank widths or short plank lengths near the walls and doors, it is important to do some preplanning. Using the width of the room, calculate how many full boards will fit into the area and how much space remains that will need to be covered by partial planks. Divide the remaining space by two to calculate the width of the partial planks. Do the same along the length.

3. The planks should be installed from one corner of the room working your way out toward the other wall. Planks should be laid tight against the wall.

4. Using a utility knife and straight edge, score the top surface of the plank then use more pressure to cut all the way through.

5. Start the next row. Planks should be installed randomly, making sure end joints are staggered and adjoining planks have end joints at least 300mm from the previous row's end joint. Keep planks tight to the surrounding floor.

6. When fitting around door jambs or other irregular objects first make a pattern using heavy paper or poster board. Trace the pattern onto the flooring and cut with a utility knife.

7. If a seam is not tight you can easily lift the planks and re-position.

CLEANING AND MAINTENANCE

When it is installed on floors with under floor heating system, the temperature of surface cannot be higher than 28°C. A heating protocol is required.



LVT RAISED

INSTALLATION

PRODUCT RECEPTION

At the reception of the product it is very important to check for possible transport damages or missing material and report all details on the CMR

REQUIREMENT OF BASE CONDITION

We do not recommend to install raised floor onto linoleum, carpets or similar products. The surface must be dry and clean and all construction works on doors and windows, as well as the cabling, must be completed.

AIR-CONDITIONING

We recommend keeping a humidity of the room 45-70% between 5-24° and $\leq 50\%$ between 24-30° before and during the installation and at least for three days after this.

INSTALLATION PLANNING

We recommend to draw a support grid and define the positions of the pedestals (pic. 1). Please consider the height of windows and doors, when fixing the height of the flooring. Besides that, it is important to coordinate the installation with other works in order to guarantee that the pedestals can be laid correctly.

GENERAL CONDITIONS

- At the edges, the Tiles should be laid in a min. distance of 100mm to the wall/border (pic 2).
- Next to stairs, ramps or other floorings, try to use full pieces or with a minimum width of 300mm

- The tiles alignment has to be respected in the doorways and the transition joints have to be fitted under the door (pic 3).
- In long and narrow areas like corridors try to leave the same distance between the last entire tile and the wall in both sides.

The tools normally used to carry out the installation of a raised floor are: Circular saw, suckers or other elevation tools, peg and rubber hammer, meter, ruler, pen and screwdrivers.

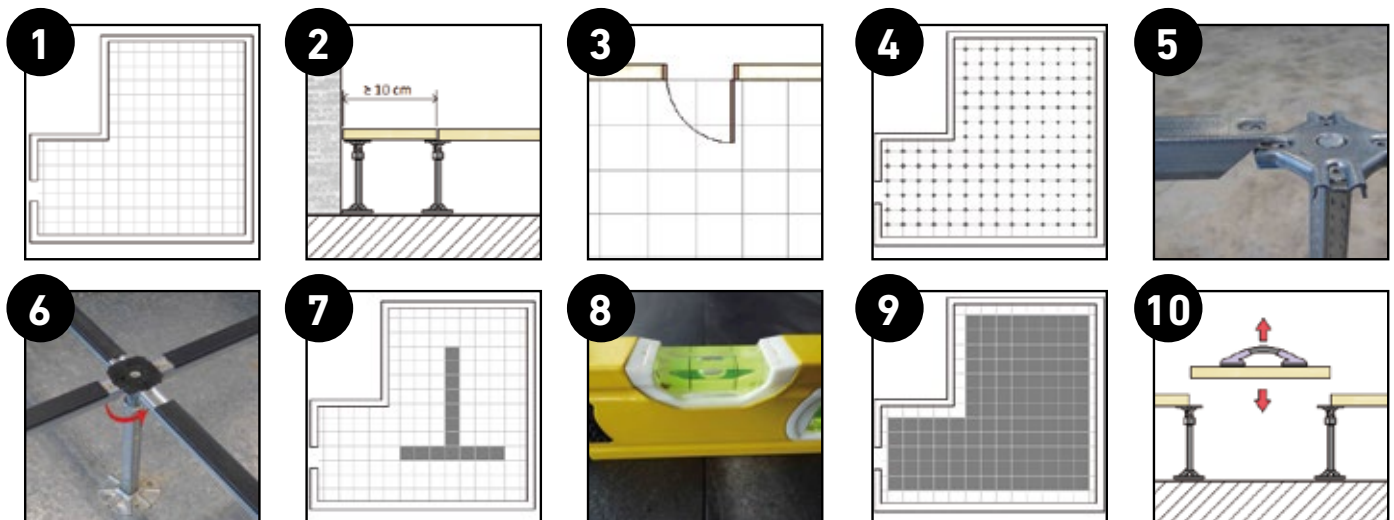
INSTALLATION

1. Lay all the pedestals on the points defined in the planning grid (pic 4).
2. Insert the beams between the pedestals (pic.5) and level the structure by expanding or shortening the pedestals (pic 6).
3. Install the entire tiles first in two different directions, drawing a T (pic. 7). Line up and level the surface (pic. 8). Then, complete the installation with all other entire tiles (pic 9).
4. Cut the perimeter tiles with the circular saw and fit them into the empty spaces.
5. It is possible to remove installed tiles using suckers (pic 10).

FINAL FINISH

Use a white and damp clean cloth to wipe the surface of the floor. Use Floover Cleaner when needed. Vacuum clean the whole area to ensure the cleanliness.

For office chairs, use soft polyamide wheels. We recommend covering the whole area for next job operation.



UNDERFLOOR HEATING

INSTALLATION

GENERAL INSTRUCTIONS

All Floover floorings can be used in conjunction with low temperature underfloor heating, provided it is a heating system with heating components (hot water or electric), which are embedded in the floor. The underfloor heating must be installed in accordance with the supplier's instructions and according to the generally accepted norms and rules. The general installation instructions for Floover flooring without underfloor heating also apply of course, unless explicitly mentioned below. The flooring must be laid floating.

It is recommended to lay an underlay with built-in moisture barrier or begin with a separate plastic film of minimum 2mm thickness. In this case, use a single sheet of plastic foil, or use several sheets but make sure they overlap at least 300 mm and tape them together.

PERFORMANCES

The maximum allowed heat resistance (R) of a floor covering is 0.15 m²KJW (EN 4725), in order to achieve Energy saving rules established by CE organization and specified generally. All Floover products accomplish those requirements, and have the following values for energy saving calculations:

	STANDART HDF CONSTRUCTION	SPLASH20 VERSION
FLOOVER ORIGINAL	0,088 K*m ² /W	0,060 K*m ² /W
FLOOVER SYNCHRO	0,089 K*m ² /W	0,061 K*m ² /W
FLOOVER PLUS	0,090 K*m ² /W	0,062 K*m ² /W

It is important to accomplish limitations of m² in 1 installation without joints: < 120 m² for Floover SplashH2O and SplashH2O light / < 150 m² for HDF and HDF light.



UNDERFLOOR HEATING

CONCRETE OR SCREED AS SUB-FLOOR

The type of screed and the installation method, combined with the underfloor heating, must comply with the instructions of the suppliers of the screed and the underfloor heating system. To obtain a homogeneous heat distribution across the entire floor, the distance between the heating elements must not be greater than 300 mm. The depth of the elements is determined by the fitter of the underfloor heating. The sub-floor must be sufficiently DRY across its complete thickness when installing the floor covering. This is maximum 1.5% humidity according to the CM method for cement-bound floors and maximum 0.3% humidity for anhydrite-bound screed.

This can only be guaranteed, when installed in new buildings, by turning on the underfloor heating. Turn up the underfloor heating gradually at least two weeks before laying your FLOOVER flooring, and minimum 21 days AFTER laying the screed (max. 5°C per day).

- at 50% of the capacity for 2 weeks
- 100% for the last two days.

For newly spread screed, follow the guidelines of your installer for the start up period. A heating protocol should be presented; ask for it if necessary.

FLOOR COOLING

More and more systems that combine heating and cooling are being installed in homes. A combination of heating in winter and cooling in summer can for technical and physical reasons be problematic in combination with organic floorings in general and with Floover in particular. Not for Floover SplashH2O version, which resist all humidity and water condensation.

The installation instructions for Floover flooring on underfloor heating without cooling also apply here of course. Low temperature will produce condensation in the floor and damage the HDF / Cork layers: warping, distortion, swelling and gapping would be possible consequences."

Floover only recommends SplashH2O and SplashH2O light for cooling systems. An effective control system consists of automatic probes that can detect when the dew point (when condensation starts) is reached under or in the Floover, and then switch the cooling off. Room thermostats should never be set under 24°C. In addition, thermostats must never be set at a temperature which is 5°C lower than the room temperature. So at a temperature of 32°C, the room thermostat must not be set lower than 27°C. The cooling circuit must have a control that prevents the temperature of the cooling liquid dropping below 18 to 22°C. This depends on the climate zone where the floor is installed. In zones with a high relative humidity, the minimum is 22°C; at average humidity and temperature levels, it can go as low as 18°C.

If you do not respect these instructions, the warranty Floover is void.

A heat resistance of less than or equal to 0.09 m²K/W is normally recommended for floor cooling. The heat resistance of Floover is always accomplished with that requirement.

HEATING FILMS

Heating films or other "new" systems ON the screed or wooden sub-floor are not always suitable. Further guidelines for these applications can be found below. An underlay can be used to level the floor, to insulate it and in particular to embed the film elements and electrical connectors. The following structure is usually applied: first the underlay, then the heating film and then the FLOOVER floor. For these systems the conditions that have to be fulfilled are that the heat must be distributed homogeneously across the entire floor to prevent any cold or warm zones, that the heat radiates up and not down, that the maximum contact temperature is not more than 27°C, and that the electrical connectors between the panels are thin enough to be sunk in the underlay mat while maintaining their strength and electrical safety, also in the event of possible condensation or a leak.

A second type of heating systems for renovation is a system with warm water pipes or electrical resistances embedded in frames. These are usually polystyrene panels which may be combined with metal plates. We consider these systems to be more reliable because they ensure a more homogeneous distribution of heat, provide heat insulation under the underfloor heating, have good contact and provide a stable sub-floor under the laminate floor. The above-mentioned notes still apply but we believe they are easier to fulfil.

STAIRS

INSTALLATION



1. Before the installation, clean the surface and eliminate protuberances.

2. Cut the stairnose to the appropriate length of the step. If two sides or more, cut in 45° to make to sides.



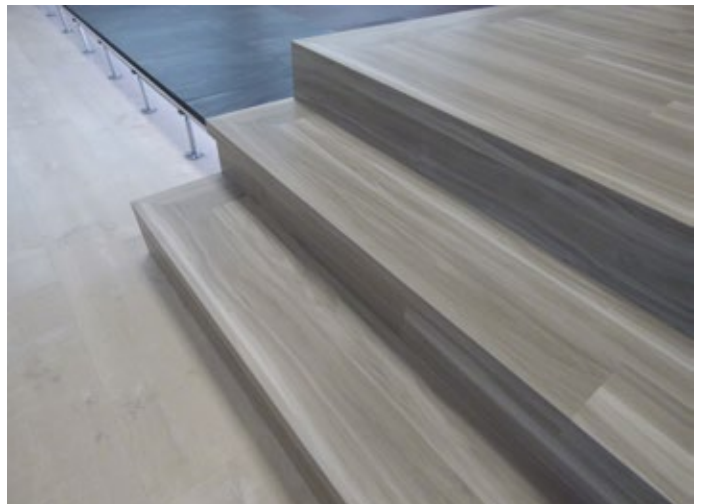
3. Take the size and cut the piece of the surface of the step, using the click system if possible or just normal glue to joint the stairnose cut previously.

4. Install the step in place, and finally the vertical side of the step.



5. It is also possible to cover the side of the step with the same stairnose product.

6. Repeat this procedure step by step until your Floover stair is completed.



LVT MAINTENANCE

GENERAL RECOMMENDATIONS

Floover products have a high resistance against stains, abrasion, UV rays, and other factors, which makes the product suitable for a wide variety of uses, even in the outdoors. However, the durability of this flooring will depend also on a good installation, use and maintenance. We show you below some instructions to maintaining your Floover floor in a perfect condition

RECOMMENDATIONS FOR USE

- In construction works, Floover flooring installation should be the last step to follow, by having the area clean and without any dust.
- When you do later works, Floover floors should be protected with a plastic sheet to avoid drops of any construction materials or painting that can damage the product.
- Once the work is finished, we recommend avoiding any entry of dirt or abrasives particles by installing a cleaning system, like doormats in the accesses.
- Please place soft pads under chairs, tables and any other furniture legs in order to avoid scratches.
- When moving heavy furniture, please lift it and do not drag it.
- Office chair wheels should be made of polyamide. Nylon wheels can damage the surface and rubbers wheels can leave marks.

SPECIAL CARE

- The use of aggressive cleaning agents can damage the product, same as for abrasive and sharp cleaning tools.
- Floover does not recommend and neither guarantees the use of chlorine, bleach or any other cleaning products not designed for cleaning vinyl flooring.
- Avoid any contact with burning cigarettes because they can leave burns.

REGULAR CLEANING

Protect the higher risk areas and install systems like doormats on the entrances to not allow the dirt to get inside.

To keep the best appearance of your Floover floor it is important to have a daily cleaning and to not leave any stains since this can affect finally the colour or become very difficult to remove. Follow the next steps that we recommend:

- To avoid dirt and abrasive particle accumulations, we recommend a daily vacuum clean.
- For the regular cleaning, after vacuuming, use a mop and a neutral cleaning agent diluted in warm water. Floover recommends **FLOOVER CLEANER**.
- Floover products are suitable for the use of scrubbing machines with soft brushes, using warm water and diluted neutral cleaner. These kind of machines are recommended for big areas.
- Avoid the cleaning water accumulation, do not soak the floor. No need to rinse.
- You can let it dry naturally or dry the floor with a soft dry mop.

STAINS CLEANING

Even if Floover products have a very high stain resistance, when there is a stain, it should be cleaned straight away, otherwise the long term exposure to certain chemicals may damage the product surface on an irreparable way.

- Clean the stains as soon as possible to avoid getting harder to clean. Do not wait more than 24 hours.
- When the stain is fresh, use first a dry cloth to absorb it. Using a wet cloth it can spread.
- Keep in mind that if you use an aggressive cleaner, you need to rinse straight away otherwise the floor can be damaged.
- Dry the floor and then rinse it with a dry cloth.
- Always follow the manufacturer instructions and always use recommended products.
- There are stains that can leave a shadow or mark after the cleaning, especially if you let them dry.



Floover Cleaner

LVT MAINTENANCE

RESTORATION & RENOVATION

LVT RESTORE

It is possible to renovate Floover flooring after heavy or aggressive use or after many years of transit. Due to the chemical composition of the protective layer, the flooring can wear out in two ways: deterioration of the polyurethane varnish or deterioration of the protective PVC layer.

To restore the surface of Floover flooring you must some important steps. First it is necessary to clean the whole area with an intensive cleaner as **BLANCHON HIPERACTIVE** to remove all the stain and remains of other products used before.

How to use Blanchon Hiperactive cleaner:

- Dilute 1 litre of cleaner in 10 litres of water (preferably hot water for better results)
- Spread the solution on the floor with a floor cloth or fill in the buffing-machine tank.
- Clean with a buffing machine fitted with a black or thick green pad, or use a long-handled scrubbing brush.
- Remove any loose dirt and rinse with clean water.*
- Aspirate and mop any loose dirt should be removed quickly by vacuuming or wiping with a scraper then a dust mop. We recommend rinsing first with a small amount of white vinegar added to the water to neutralize product alkalinity.



Blanchon Hiperactive



Blanchon Intensiv

Blanchon Renovador

Then use **BLANCHON RENOVATOR** or **BLANCHON INTENSIVE** if you want a higher protection layer. Also it is possible to restore scratches using a polishing sponge before cleaning.

*NOTE: Take care not to create any water stagnation, especially on the Floover Woven HDF, the excess moisture can generate the swelling of the board.

FURTHER INFORMATION ABOUT CLEANING AND MAINTENANCE UPON REQUEST



WOVEN ROLLS

INSTALLATION

REQUIREMENT OF BASE CONDITION

Note the following requirements depending on the different surface material:

1. Concrete: Standard practice shall be followed. If the moisture condition of substrate is not reaching the standards, please treat the substrate with heavyduty epoxy-based moisture control system and wait until it is completely dry.
2. Wood: Standard practice shall be followed. Please do not install our flooring products directly over plywood, treated wood or other uneven or unstable wood substrates. Always make sure the surface is clean, completely dry, flat and free of cracks. Dirt on the surface will affect the performance of adhesive and may telegraph to the surface once installed.

ADHESIVES AND SEALER

To reach a better adhesive result, please choose proper glue for different using areas and always follow user guides from the supplier. Here is a simple guide of how to choose the glue for:

- Low to moderate levels of traffic: choose an acrylic high quality glue such as Henkel K188E, Mapei EC0350 or similar.
- High levels of traffic: Use polyurethane compound glues, such as Henkel R710, or similar.
- Humid and wet areas: Use a water-resistant adhesive depending on subfloor material.

Cold welded sealer is necessary for roll installations; all the joints must be sealed with a cold welded sealer such as Werner-Muller-GmbH type A, or similar.

When fixing the flooring to the stairs, a protection mould is required for the front edge of each stair.

To seal an indoor floor with high levels of traffic (hotels, restaurants, shops, offices ...) that require products of high resistance to dirt and much durability we recommend polyurethane compounds.

UNDERFLOOR HEAT SYSTEM

When installed on floors with underfloor hear system, the maximum allowed surface temperature is 29°C.

Install your floor at least 7 days after the installation of under floor heat system is completed.

BEFORE INSTALLATION

Before the installation, make sure the product has not been damaged during transportation. Damaged material will be not replaced once installed. Check the product in the daylight and if any manufacturing defect, wrong colour or brightness is found during the inspection, please contact immediately the retailer from which the flooring was purchased, It should be indicated the production date which is record on the etiquette. Please make a photo of the sticker.

Some differences of colour and structure are due to the nature of the material and so they cannot be an object of a claim. As with all natural products once exposed to sunlight or some chemicals there is a possibility that there may be some minor alteration in the colour.

Check the production lot on the roll label and separate the rolls according to these batches. The rolls must be extended in the area of the installation at least 24 hours before being glued. Try not to mix different batches of production.

Roll-packed products are finished in approx. 200cm with some extra material allowing overlapping for proper installation. The installation must be done at a temperature of 15°C or above.

We recommend rolling out the material in the lengthwise direction of the room and always in the same direction (refer to the arrow sign marked on the back side of the rolls). Try to avoid the excess of joint seams, this will create a nicer visual appearance of the flooring and simplify the maintenance.

INSTALLATION

1. Draw a line on the floor 196cm distant from the wall.
2. Lay out the first roll following the line's outer edge.
3. The next roll must overlap by approx. 4cm (pic 1). For stripe designs, adjust overlap until the design meets.
4. Cut through both lengths in the direction of the seam (pic 2).
5. Remove the surplus pieces (pic 3).
6. Spread the adhesive evenly on a half part of the area and allow it to aerate (pic 4).*

WOVEN ROLLS INSTALLATION

7. Lay the roll down and erase any bubble using a heavy roller of 75 kg at least. Use a little roller to run over the joints.

8. Repeat the same process with the other half.

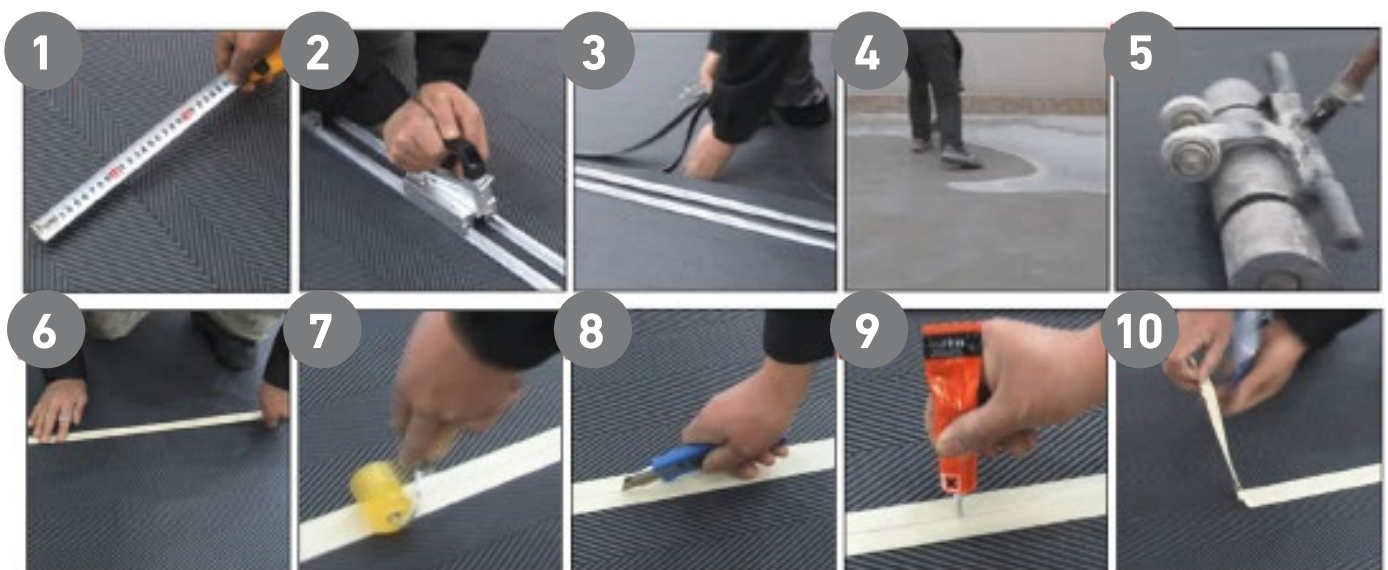
*NOTE: it is possible to apply the glue before "step 3" but the cut must be made until the adhesive is still fresh to be able to remove the surplus pieces.

COLD- WELDING WORKING INSTRUCTION

We recommend to work without masking tape when cold-welding woven vinyl material. Because of the woven top layer of this kind of floor coverings the masking tape will most likely not stick properly and the welding liquid can penetrate under the tape. If the tape is lifted later on it is impossible to dab the remaining cold welding liquid, the top layer literally melts and the seam is clearly visible. The seam area is welded but the visible result is poor. We recommend, if the top layer of a floor-covering is uneven and because of that it is likely that the tape will not stick properly, to work without the tape and to weld and instantly dab instead. Best is if one person does the welding and another is dabbing, following the first with a bit of distance. This avoids unnecessary melting of the top layer and ensures the best results. For dabbing use an uncoloured cotton cloth (colour in the cloth could stain the seam area), as long as it is clean and able to absorb the liquid. If the cloth has been used and if it is hard because of the absorbed cold-welding liquid replace with a new one.

AFTER LAYING

Immediately after installation, clean the floor with a damp cloth to remove dust and dirt. For daily cleaning, use suitable neutral cleaners such as Floover Cleaner. For an intensive cleaning you can use a brusher machine. Protect the higher risk areas and install systems like doormats on the entrances to not allow the dirt and abrasive particles to get inside. Protect your floor in future works. Apply felt pads under tables, chairs etc. Lift heavy furniture to avoid trailing marks. The office chairs must have soft polyamide wheels in respect of the norms. For an intensive cleaning or restoration after a long period of use, the use of the Syntilor Special Composites cleaner is recommended.



WOVEN LOOSE LAY

INSTALLATION

REQUIREMENT OF BASE CONDITION

Note the following requirements depending on the different surface material:

1. Concrete: If the moisture condition of substrate does not conform to the standards, treat the substrate with heavy duty epoxy-based moisture control system and wait until it is completely dry.
2. Wood: Do not install our flooring products directly over plywood, treated wood or other uneven or unstable wood substrates.
3. Existing ceramic tiles: It must be made smooth by applying a cementitious overlay such as patching or levelling compound.

For levelling the base it is recommended to use a self-levelling compound with a previous primer.

Always make sure the surface is clean, completely dry, flat and free of cracks. Dirt on the surface will affect the performance of adhesive and may reveal bulges on the surface once the product is installed. The level of humidity must comply with the values prescribed in current norms: as a general rule, a maximum of 2,5-3% for cementitious substrates and 0,5% for gypsum or anhydrite-based substrates.

ADHESIVES AND SEALER

To reach a better adhesive result, please choose proper glue for different using areas and always follow user guides from the supplier. We highly recommend Ultrabond Eco Tack LVT. The use of non-permanent glue allows you to replace easily a single tile and a easy access to the subfloor.

When fixing the flooring to the stairs, a protection mould is required for the front edge of each stair.

To seal an indoor floor with high levels of traffic (hotels, restaurants, shops, offices ...) that require products of high resistance to dirt and much durability we recommend polyurethane compounds.

UNDERFLOOR HEAT SYSTEM

When installed on floors with underfloor heat system, the surface temperature cannot be higher than 29°C. Install your floor at least 7 days after the installation of under floor heat system is completed.

BEFORE INSTALLATION

Before the installation, make sure the product has not been damaged during transportation. Damaged material will be not replaced once installed. Check the product in the daylight and if any manufacturing defect, wrong colour or brightness is found during the inspection, please contact immediately the retailer from which the flooring was purchased. Complaints on any flaws should be made prior to installation.

Some differences of colour and structure are due to the nature of the material and so they cannot be an object of a claim. As with all natural products once exposed to sunlight or some chemicals there is a possibility that there may be some minor alteration in the colour.

Check the production lot on the box label and separate the boxes according to these batches. The boxes must be placed in the installation area at least 24 hours before being opened. Try not to mix different production batches.

Woven Loose Lay product is produced in square shape of 500x500 mm. The installation must be done at a temperature of 15°C or above.

TILES INSTALLATION

1. Before installation, we recommend drawing a draft of laying plan. Start drawing two perpendicular lines, each one parallel to a wall, near from the room entrance (pic 1).
2. Spread the adhesive evenly over the entire surface (pic 2).
3. Wait until the water has completely evaporated, before starting with the installation of the floor. This waiting time can vary, depending on the type of substrate, surrounding temperature and the amount of product applied. Please let the product aerate for at least 1 hour and follow the manufacturer's instructions.
4. You can create different designs depending on the direction of the tiles (marked with an arrow on the back of the

WOVEN LOOSE LAY INSTALLATION

tiles). Being a product that can have slight differences of tonality, we recommend installing Woven Loose Lay in chess-board system (pic 3).

5. Install the first tile from this cross section (pic 4) and follow the lines to fill the surface progressively (pic 5).

6. Make sure each panel is firmly attached and straight against one another otherwise it will affect the final result of the whole installation (pic 5).

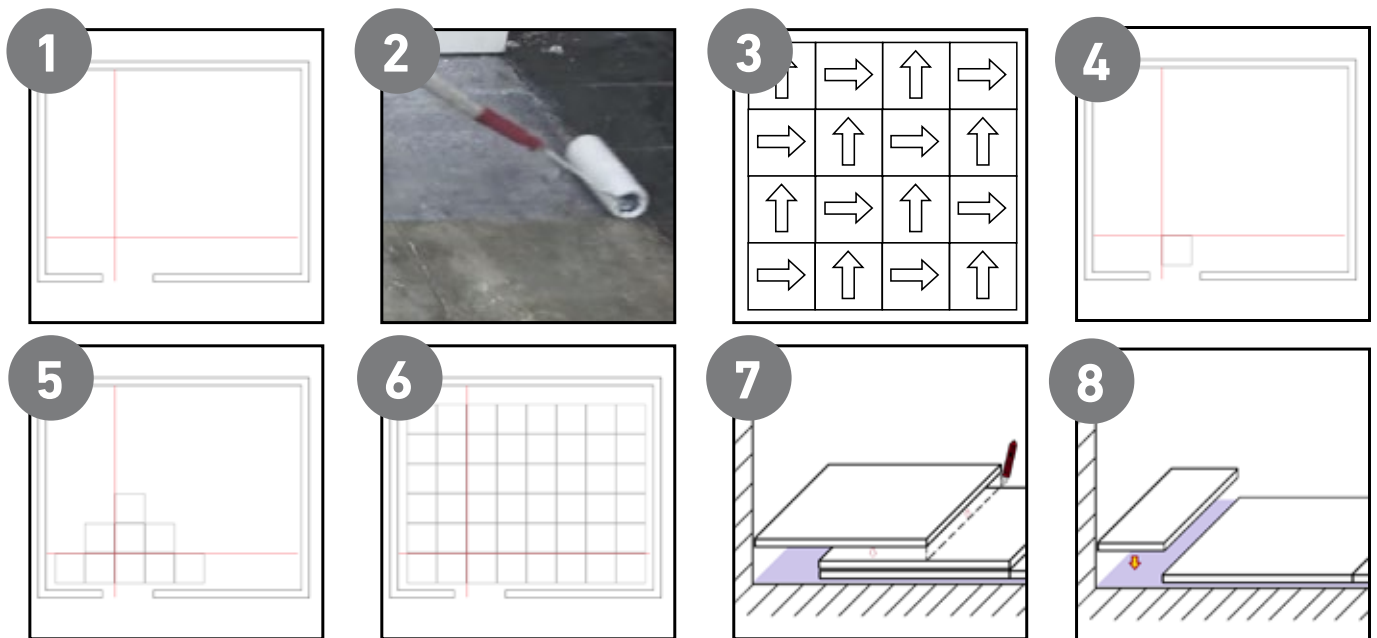
7. Complete the installation of all the tiles that must not be cut (pic 6).

8. To fit the perimeter cut the pieces before installing them. Place the tile that has to be cut on the last one installed. Push another tile to the wall and cut (pic 7). Then fit the cut piece (pic 8).

9. After installation, use minimum weight 75 kg roller lengthways and transversely to erase any glue bubble (photo 6). Use a little roller to run over the joints (photo 7).

AFTER LAYING

Immediately after installation, clean the floor with a damp cloth to remove dust and dirt. For daily cleaning, use suitable neutral cleaners such as Floover Cleaner. For an intensive cleaning you can use a brusher machine. Protect the higher risk areas and install systems like doormats on the entrances to not allow the dirt and abrasive particles to get inside. Protect your floor in future works. Apply felt pads under tables, chairs etc. Lift heavy furniture to avoid trailing marks. The office chairs must have soft polyamide wheels in respect of the norms. For an intensive cleaning or restoration after a long period of use, the use of the Syntilor Special Composites cleaner is recommended.



WOVEN WALLS

INSTALLATION

BEFORE THE INSTALLATION

Once the material is received, store it in a horizontal position and without any weight above. Check and make sure that all the content comes from the same reference and the amount is the requested.

In case of any problem stop immediately the installation and contact your dealer.

SURFACE PREPARATION

The surface must be completely dry, absorbent, flat, resistant, and free of dust, loose parts, paints and oils.

The moisture content must be as prescribed: for cement bases, should be a maximum of 2.5-3% and for which are based on gypsum or anhydride a maximum of 0.5%.

To adapt the surface to the placement on insufficiently smooth walls is necessary a smoothing treatment. See recommended instructions by the adhesive manufacturer for each support products.

INSTALLATION INSTRUCTIONS

Measure the length of the wall and make a design how you will position the strips. Measure the height of the wall and cut the strips adding 4 cm on each side to compensate the irregularities of the floor and the ceiling. If you have skirting, measure the distance from it to the ceiling. Number the strips and note that they should always be installed in the same direction to avoid visual variations.

Mark with pencil a vertical line 98 cm from the first corner. Spread the adhesive for wall coverings Slc® Eco Grinkol de Kerakoll or similar regularly on the surface marked with a finely serrated spatula adding 20 extra cm (from the line). Near the ceiling and floor the application should be more generous. Slc® Eco Grinkol de Kerakoll is not flammable and doesn't contain solvents or toxic substances. Its performance will vary depending on the spatula used. For application details, levelling products and primers see adhesive sheet.

Place the first strip on the glued surface along the drawn line considering that it should be leftover material on the corners as well as on the ceiling and the floor. Press with a spatula to remove any air between the product and the wall. When you have an outside corner, it is recommended to cover it whenever it's possible. It should cover at least 30 cm, if it's not possible, you should cut on the corner and start again. The strips should be applied one next to the other without overlapping. The adhesive should not protrude at the joints. Press with a spatula along the joint. To cut the remaining material in corners, ceiling and floor use a spatula and a utility knife.

Floover Woven Walls is manufactured as a textile. For that reason an asymmetry or effect arc of a 2% is tolerated. Its textile nature makes each piece unique, with possible slight differences between them, which are considered a property of the product

WOVEN RAISED

INSTALLATION

PRODUCT RECEPTION

After receiving the product, it has to be checked to be sure there isn't damaged material or missing pedestals, beams and any installation items.

REQUIREMENT OF BASE CONDITION

It's not recommended to install raised flooring onto linoleum, carpeted or similar. The surface has to be dry and clean and all the holes (doors, windows, ...), the walls, and the cabling must to be finished.

AIR-CONDITIONING

We recommend keeping a humidity of the room 45-70% between 5-24° and $\leq 50\%$ between 24-30° before and during the installation and at least for three days after this.

INSTALLATION PLANNING

It's recommended to draw on the support the grid which defines the points where the pedestals has to be laid (pic 1). To set the high of the flooring characteristics of the room as the high of the doors or the windows have to be considered.

It's important to coordinate this installation with other works to be sure that all the pedestals can be laid correctly.

Recommended installation system: chessboard (pic 2)

Please, make sure all the flooring products are from the same item collection and made from the same lot. The Woven range is a vinyl textile therefore it has all the textile properties and these may suffer variations or changes with time. These variations may affect and alter the colour

GENERAL CONDITIONS

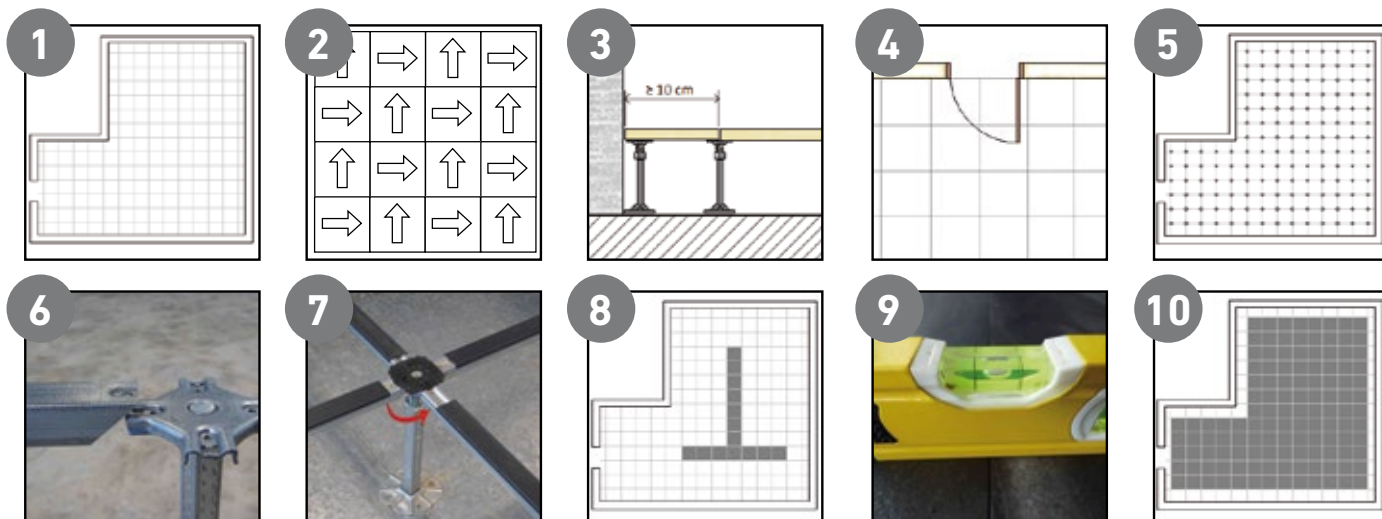
- Avoid as far as possible installing tiles lower than 10cm wide in the borders (pic 3).
 - Next to stairs, ramps, or other floorings try to use entire pieces, or pieces not lower than 30cm wide.
 - The tiles alignment has to be respected in the doorways and the transition joints have to be fitted under the door (pic 4).
 - In long and narrow areas like corridors try to leave the same distance between the last entire tile and the wall in both sides.
- The tools normally used to carry out the installation of a raised floor are: Circular saw, suckers or other elevation tools, peg and rubber hammer, meter, ruler, pen and screwdrivers.

INSTALLATION

1. Lay all the pedestals on the points defined in the planning grid (pic 5).
2. Put the beams between the pedestals (pic 5 and 6) and level the structure expanding or shortening the pedestals (pic 7).
3. Install the entire tiles first in two different directions drawing a T (pic 8). Line up and level the surface (pic 9). Then complete all the entire tiles (pic 10).
4. Cut the perimeter tiles with the circular saw and fit them into the empty spaces.
5. It's possible to remove the installation starting at the borders or at the manhole cover.

FINAL FINISH

Use a white and damp clean cloth to wipe the surface of floor. Use Floover Cleaner for daily cleaning. For intensive cleaning or long period renovation, we recommend use of Syntilor Composite Cleaner. We recommend covering the whole area for next job operation. The office chairs must have soft polyamide wheels.



DECKING

INSTALLATION

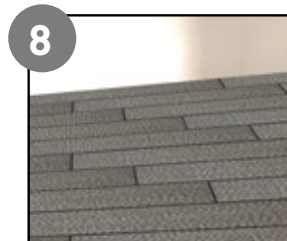
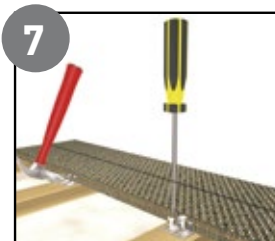
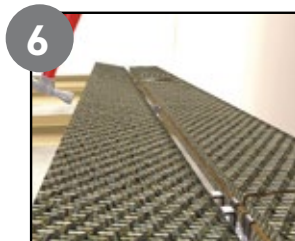
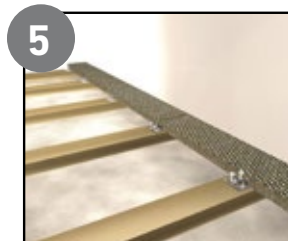
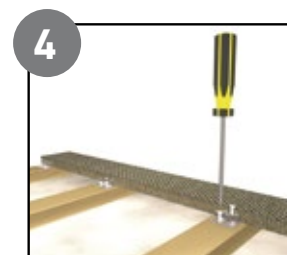
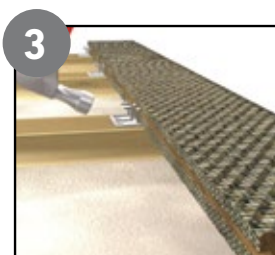
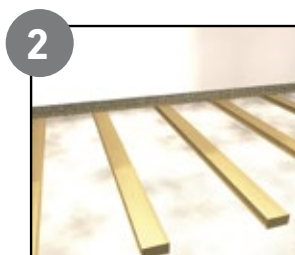
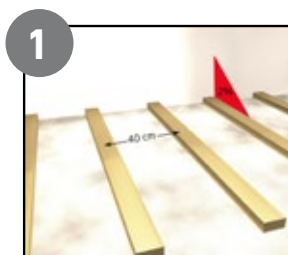
The support for laying Floover Woven Decking must be cleaned before starting the placement and it must have adequate resistance for the anchoring system of the beams. The most common types of supports are:

- Levelled concrete with drainage
- Concrete with slope
- Gravel
- Sand

In the outdoor decking systems it is essential to provide drain to the support assembly and to avoid the stagnation of water from rain, irrigation, needlework cleaning... Also, it is recommended to provide the support of a slope of 2% -5% to evacuate the water to the drainage points. The beams must always allow free flow of water to prevent accumulation.

INSTALLATION

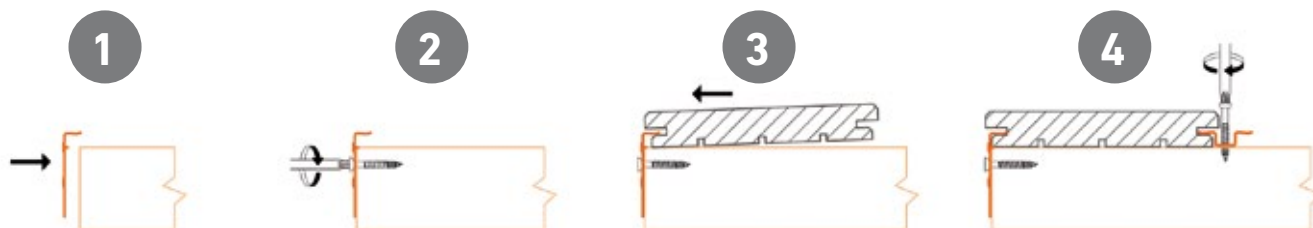
1. Place the pine or aluminum support beams crosswise to the direction which you expect to lay the Woven Decking leaving 40 cm between the center of a beam and the center of the next one. The distance between the centers of the first two support beams must be 37 cm, in order to allow the heads of the Decking staves to fully cover the first support beam. In case of heavy loads (more than 300 kg/m²) it is recommended to reduce the distance between the beams to 25 cm.
2. Place the first stave laying it across the support beams and ensure that the head of the stave on the side in which you intend to continue with the flooring ends exactly halfway of the support beam so the other half of the support beam remains free in order to allow the insertion of the following stave.
3. Firmly insert the fins of the steel clips in the longitudinal groove of the stave next to the support beams. For this procedure it is advisable to use a rubber hammer. Weight force on the decking surface is transmitted to the clips. For that reason, every beam must be fitted with a clip.
4. For Standard Clips, screw the steel clips on the support beam inserting the screws in the two visible holes. For B-fix Clips, partially insert the screws (the head of the screw must be under the upper profile of the board), then place the next Decking board and screw them up completely.
5. Lay the second Decking board of the first row on the support beams starting from the free half part of the support beam leaving 3 mm between the heads of the staves to allow dilatation. Hook the clip that connects the two staves. For standard clips, take care of inserting one of the two fins of the clip in the first board and the other one in the second board. For B-fix clips, insert a half part of the fin of the clip in the first board and the other one in the second board. Then tighten the screws on the support beam. Then go ahead inserting and screwing all the other clips.
6. Install the first plank of the second row by firmly pushing (possibly with the help of a rubber hammer) the stave towards the clips already screwed on the support beams and make sure that the fins of the clips fit well into the groove.
7. Insert all the clips of the second row and screw them on the support beams, just like previously done.
8. The example shows correctly installed floor where you can see the different lengths of the stave.



DECKING INSTALLATION

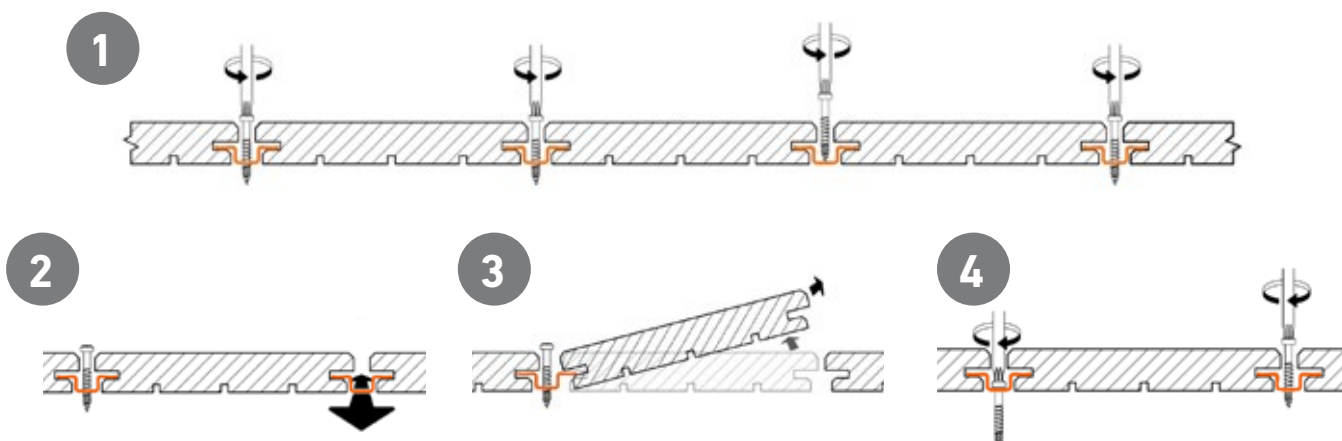
L-SHAPE AND BORDER CLIP

Floover L-Shape clip and B-fix borders permit the first and last decking boards to be attached directly to the end of the joists producing an entirely seamless finishing to the decking. The use of visible screws on the borders is thus no longer necessary.



SINGLE STAVE REPLACEMENT (B-FIX ONLY)

Completely unscrew and take out the screws of all the clips of one side of the board that you want to replace. Unscrew halfway the next 4 side rows screws allowing the plank moving. Then pull all the unscrewed clips with the help of a screwdriver or any thin tool and place them off the plank. Lightly balance the board and take it out with your hands. Place the new stave pushing it towards the halfway screwed clips and move the other clips back to their place. Completely screw all the clips.



LED BOARD (B-FIX ONLY)

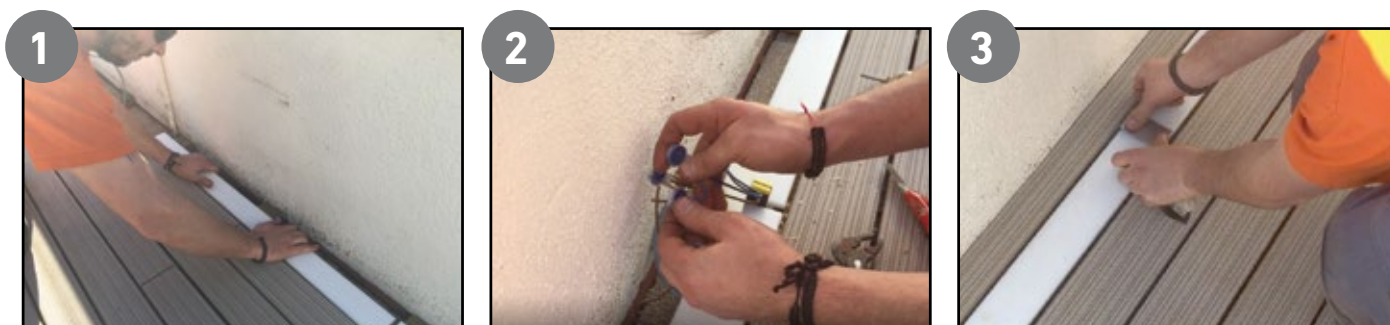
The B-Fix Led-Board is a white polyethylene deck adapted to B-Fix and that incorporates LED lighting. It is available in Mono-chrome or RGB (colour) versions either in 1m pre-wired or custom-made lengths.

Low consumption (LED led 90 cm RGB = +/- 11Watts) and a lifetime of 50,000 hours (more than 5 years on non-stop!).

Completely waterproof system (IP67 standard) and low voltage (24v / 12v).

Ability to control the intensity and colour of the lighting.

Follow the same steps as Woven Decking installation using B-fix clips. Connect the cabling and the transformers after placing the LED boards. Place the joinctions between on the boards separations. Continue insalling the Woven Decking normally.



TILES

INSTALLATION

The woven outdoor tiles with plastic grid base make the installation very simple as they do not need adhesive or a structure of beams or crossbars. Not only its plastic grid creates a perfect union between tiles, it also guarantees water drainage. They can be installed on every kind of soil as long as they are well levelled and compacted.

They have to be placed directly on the soil and fitted together by means of the built-in click system. Once installed, the tiles are fixed, immovable and easy to disassemble if you want to change the design or do some works under the flooring.

It is possible to install Woven tiles in different directions. We do recommend a chessboard installation for a better visual aspect. You can also combine different references to create a unique and original design.

INSTALLATION

1. Place the first piece in a corner of the area you want to cover. Leave the two female receptacles exposed at sight.
2. Insert the male clip of the second tile into the female receptacle of the first tile. Follow this step to complete the first row.

3. For the following rows, the male clips on both sides of each piece must be inserted into the female receptacles of the two adjacent pieces.

4. Make sure that the male clips of all installed pieces are completely inserted into the female receptacles of the previously placed ones.

5. To install Woven tiles in different directions, you must slightly lift some installed tiles in order to place the female receptacles of the next tile under the male clips of the installed ones. Press firmly until you hear the click.

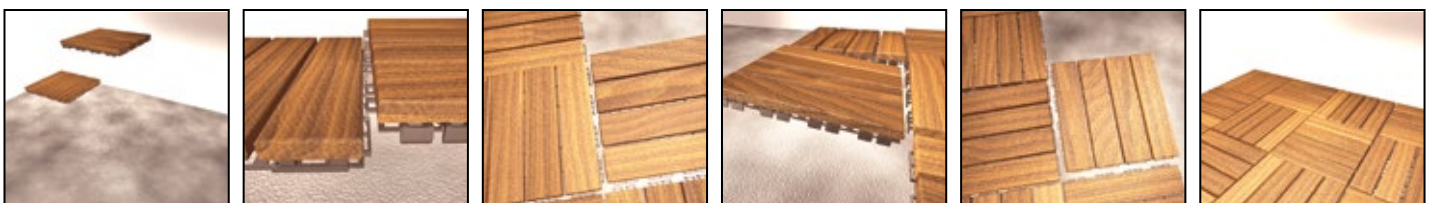
6. To place tiles of 300x600 mm in chessboard mode, they must be joined in pairs creating a grid of 600x600 mm.

7. The tiles can be easily cut with a jigsaw when encountering walls or other objects. If you have irregular obstacles, use a carton of the tile's dimensions in order to make a template with the object's shape and draw this pattern on the tile you want to cut.

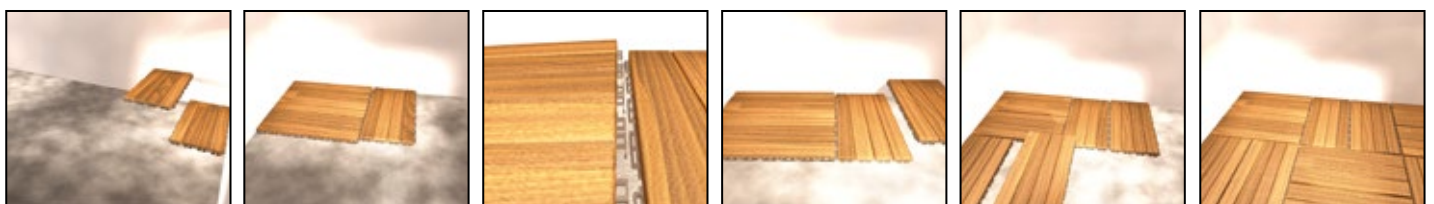
8. If the cut line touches one screw, unscrew it and re-insert it into another hole in the same plank.

9. If desired, you can also install the Woven outdoor skirting. Depending on the wall composition, it can be fixed with adhesive or screwed.

300x300 TILES



300x600 TILES



WOVEN MAINTENANCE

GENERAL RECOMMENDATIONS

Floover products have a high resistance against stains, abrasion, UV rays, etc... ,which make the product suitable for a wide variety of end uses, even outdoor. However, the durability of this flooring will depend also on a good installation, use and maintenance. We would like to show you some instructions to maintaining your Floover floor in a perfect condition.

RECOMMENDATIONS FOR USE

- In construction works, Floover flooring installation should be the last step to follow, by having the area clean and without any dust.
- When you do later works, Floover floors should be protected with a plastic sheet to avoid the drop of any construction materials or painting that can damage the product.
- Once the work is finished, we recommend avoiding any entry of dirt or abrasives particles by installing a cleaning system, like doormats in the accesses.
- You should place soft pads under chairs, tables and any other furniture legs in order to avoid scratches.
- When heavy furniture is moved, you should carry it by lifting, never drag it.
- Office chair wheels should be made of polyamide. Nylon wheels can damage the surface and rubbers wheels can leave marks.

SPECIAL CARE

- The use of aggressive cleaning agents can damage the product, same as for abrasive and sharp cleaning tools.
- Floover does not recommend and neither guarantees the use of chlorine, bleach or any other cleaning products not designed for cleaning vinyl flooring.
- Avoid any contact with burning cigarettes because they can leave burns.

REGULAR CLEANING

Protect the higher risk areas and install systems like doormats on the entrances to not allow the dirt to get inside.

To keep the best appearance of your Floover floor it is important to have a daily cleaning and to not leave any stains since this can affect finally the colour or become very difficult to remove. Follow the next steps that we recommend:

- To avoid dirt and abrasive particle accumulations, we recommend a daily vacuum clean.
- For the regular cleaning, after vacuuming, use a mop and a neutral cleaning agent diluted in warm water.

Floover recommends **FLOOVER CLEANER**.

- Floover products are suitable for the use of scrubbing machines with soft brushes, using warm water and diluted neutral cleaner. These kind of machines are recommended for big areas.
- Avoid the cleaning water accumulation, do not soak the floor. No need to rinse.
- You can let it dry naturally or dry the floor with a soft dry mop.



STAINS CLEANING

Even if Floover products have a very high stain resistance, when there is a stain, it should be cleaned straight away,

otherwise the long term exposure to certain chemicals may damage on a irreparably way the product surface.

- Clean the stains as soon as possible to avoid getting harder to clean. Do not wait more than 24 hours.
- When the stain is fresh, use first a dry cloth to absorb it. Using a wet cloth it can spread.
- Keep in mind that if you use an aggressive cleaner, you need to rinse straight away otherwise the floor can be damaged.
- Dry the floor and then rinse it with a dry cloth.
- Always follow the manufacturer instructions and always use recommended products.
- There are stains that can leave a shadow or mark after the cleaning, especially if you let them dry.

WOVEN MAINTENANCE

RESTORATION & RENOVATION

WOVEN RENOVATION

Periodically, you need to do a deep clean to recover the initial feature of your Floover Woven. For this, follow the next steps:

- Firstly, vacuum any dust or dirt.
- Rinse and brush the floor to eliminate any accumulates adhered dust.
- Dilute Special **COMPOSITES CLEANER SYNTILOR**: 2 glasses for 2 liters of warm water
- Apply (we recommend to use a sprayer) over an area of 5 to 8m².
- Let it work for 5 to 15 min, without drying. Brush the floor, that should now appear clean.
- Rinse with water*
- Do the same for the rest of the floor, always on areas from 5 to 8m².
- If necessary, for the embedded stains, repeat the process or use the Cleaning Agent with a higher concentration (2 glasses for 1l of warm water)



Composites cleaner Syntilor

*NOTE: Take care not to create any water stagnation, especially on the Floover Woven HDF, the excess moisture can generate the swelling of the board

FURTHER INFORMATION ABOUT CLEANING AND MAINTENANCE UPON REQUEST



WALLCOVERING

INSTALLATION

Floover Wall Covering is a new application specially designed to be installed on walls, ceilings and furniture. It is produced in strips 3000 mm long and different widths depending on the chosen material (between 68 and 137 cm). It is available in 4 different supports, light, easy to handle and install and without big maintenance requirements.

BEFORE THE INSTALLATION

Once the material is received, store it without any weight above. Check and make sure that all the content comes from the same reference and the amount is the requested. In case of any problem stop immediately the installation and contact your dealer.

TOOLS

The basic tools are pencil, wallpaper smoother, utility knife, wallpaper brush, seam roller, spirit level, plumb line and soft wallpaper brushes. During the gluing phase, always have a bucket of clear water and a sponge to remove the traces of glue, to clean the roller, the cutter and the scissors or even to wash your hands.

The recommended adhesives depend on the support:

- NON-WOVEN FABRIC ONE SIDE COATED, SMOOTH MATERIAL and EMBOSSED COATED VINYL ON NON-WOVEN MATERIAL: Metylan (Henkel), Glicovil Marker (Mapei), CI Platin (Glutolin) or similar.
- TEXTILE MURAL WALLCOVERING NON WOVEN FABRIC COATED (SILK): MT32 (Mapei) or Metylan (Henkel) or similar.
- WOVEN VINYL TEXTILE: Adesilex VS45 (Mapei) or similar.
- OPALESCENT: In case of installation inside bathrooms and showers, we recommend the use of Texreco S.

SURFACE PREPARATION

The surface must be dry, flat, absorbent, strong and free of rising damp, dust, loose parts and substances which may compromise bonding, such as paint, oil, etc.

Check the level of damp in the substrate, which must be according to the levels recommended by the manufacturer of the coating. The level of damp must be a maximum of 2.5% to 3% in the case of cement and concrete walls, and lower than 0.5% for gypsum-plaster.

To adapt the surface to the placement on insufficiently smooth walls is necessary a smoothing treatment. See recommended instructions by the adhesive manufacturer for each support products.

In the case of drywall it is advisable to apply a coat of primer product as Mapei Primer G or similar diluted in 1 liter per 3 liters of water; place after the wall is perfectly dry.



WALLCOVERING INSTALLATION

INSTALLATION INSTRUCTIONS

Start from one side of the wall. Mark with pencil a vertical line to place the first strip. Spread the adhesive for wallcoverings regularly on the first strip. Blend the wallpaper distribute the adhesive evenly. It is also possible to spread the adhesive directly on the wall with a wallpaper brush.

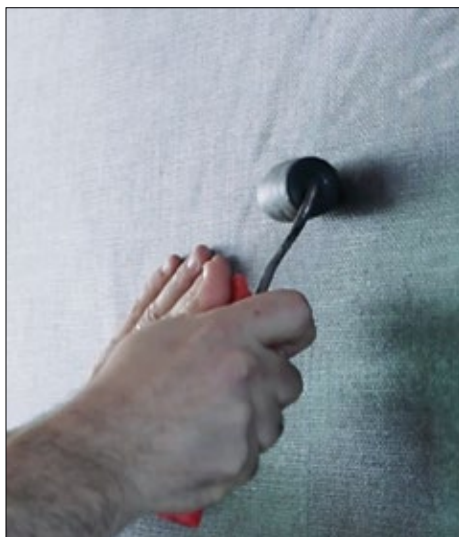
Some wallcovering adhesives are manufactured to be spreaded out on the wall with a roller or trowel (Adesilex MT32, Adesilex VS45 or Metylan Ovalit).

Place the first strip along the drawn line considering that it should be leftover material on the corners as well as on the ceiling and the floor. Press it with a wallpaper smoother or soft wallpaper brush to remove any air between the product and the wall.

When you have an outside corner, it is recommended to cover it whenever it's possible.

The strips should be applied one next to the other without overlapping. The adhesive should not protrude at the joints. Clean the excess of adhesive with a sponge while the glue is still fresh and press the joints with a seam roller. To cut the remaining material in corners, ceiling and floor use the wallpaper smoother and a utility knife.

All supports are easy to clean with a damp cloth and clean water. Textile mural and Woven vinyl textile wallcoverings can be cleaned with a damp cloth and neutral cleaner as Floover Cleaner.



WALLCOVERING

WATERPROOFING KIT ONLY FOR RILIEVO (VINYL ON NON-WOVEN)

Waterproofing Kit only for vinyl non-woven and only for indoor application. The kit contains one resin pot (1 kg) and one spray wax (0,5 lt). In order to complete the treatment efficiently, please use two coats of resin and one coat of wax, for a total waterproofing effect.

KIT CONTENT

RS 569 – Polyurethane mono-component Resin, matte and flexible. Chemical composition: Aliphatic polyurethane water-based.

FEATURES:

- Non-yellowing, water-based resin
- Coating of decorative holders on vertical surfaces made of non-woven vinyl
- Humidity resistance
- Outstanding resistance to alcohol
- High tensile strength
- Very good abrasion resistance
- Application Temperature: From 10 °C to 30 ° C (Support temperature)
- Duration: one year from purchase
- Yield: 1 kg = 5,2 sq m
- Solidification time: 1h at 20 ° C
- Fireproof: BFL - S1 (EN 13501-1)

RS CARE – WAX IDRO – Polyurethanal hydrorepellent wax that gives to the wallpapers a natural and waterproofing effect. Chemical composition: water-based polyurethane resins.

FEATURES:

- Ideal for resin surfaces, brick stone materials, ceramics which are in continuous contact with external agents, so that the surface has a self-cleaning power with rain or water
- It can be subjected to chemical and mechanical stresses
- Application Temperature: From 10 °C to 30 ° C (Support temperature)
- Fire resistance: not inflammable
- Duration: best before one year from opening
- Yield: 0,5 lt = about 62 sq m

PREPARATION OF THE SURFACE

The decorative fabric must be perfectly anchored to the surface. Make sure the glue used for the application is completely dry. The surface must be dry, solid, stable and free of dust, dirt and other separators.

Pay attention: substrate's and the environment's humidity can delay the solidification and hardening.

STEP 1 - APPLICATION OF THE RS 569 RESIN

- Always shake before use. Apply the first coat of polyurethane resin RS 569 with the special sponge or short-haired roller
- Wait for about one hour and/or the complete drying of the material
- Apply the second coat with the special sponge roller or short-haired, crossing the line with the application data first-hand
- The total consumption of the two coats must exceed 200 gr/m²

STEP 2 - APPLICATION OF WAX HYDRO

- Always shake before use. One hour after the second treatment of resins, when the surface is dry, apply the final layer of polyurethane matte
- Apply WAX HYDRO using the specific spray on the treated part of the wall, standardizing it with a cloth in order to avoid product stach
- Wait 24 h before applying water on the surface
- The surfaces treated with WAX HYDRO must be kept and renovated by applying a new coat of the same product, once a year
- For routine cleaning of treated surfaces, use mild detergents
- Do not use abrasive rags or cloths

ENVIROMENTAL CONDITIONS

Temperature of the air and of the surface: between + 10 °C and + 30 °C

Air-relative moisture: max. 75%

You can find important tips about the application inside the data hardback.

RS 569 resin and WAX IDRO are free from flaws in components.

Since the methods of application and support affect the supply, the Company makes no warranties, express or implied, including the warranties of merchantability and suitability for different applications.

For reasons metioned above, the Company is not responsible for any loss or damage.

MINERAL

INSTALLATION

BEFORE INSTALLATION

Floover Mineral is laid floating on a clean, dry, level, as well as tensile and pressure-resistant substrate.

The maximum permissible unevenness of the subfloor must not exceed 2 mm to 1 m length, otherwise it must be compensated with filler. Floover Mineral is also suitable for full-surface bonding with a recommended water-free adhesive from your adhesive supplier (e.g., Kleiberit 583.6 or Ardex N 23 (W)).

Before installation, Floover Mineral should be acclimatised at a room temperature of 20-22 ° C and a relative humidity of approx. 50-60%, 24h in the closed, plain bearing package. For mineral substrates, it is not necessary to install a PE film (damp proof membrane) provided the subfloor complies with the humidity standard, i.e. max. 2,0% CM for cement subfloor and max. 0,5% CM for anhydrite subfloor.

Floover Mineral can also be installed on hot water and electric floor heating.

For application in the wet area where there is danger of standing water or flooding, it is imperative to use a so-called jointing compound (for example Henkel's "Clickguard").

The boards should be checked for their perfect condition at daylight, any defects must be claimed before the laying. Please also check that the tongues and grooves are free from chips or other particles.

LAYING

Start the laying in a corner of the room. No expansion joints are necessary.

Lay the following panels in the direct extension of the first. The remainder of the first row is used as the first panel of the second row. This cut piece should be at least 30 cm long.

For cutting the panels, a hand circular saw or laminate punch is recommended. It is also possible to cut the cutting line with a cutter knife and "buckle" the plate.

Place the panels slightly obliquely at approx. 20 ° and click on them by pressing and gently rocking. . On the front, the panels are clicked by means of a tapping block by gentle beating.

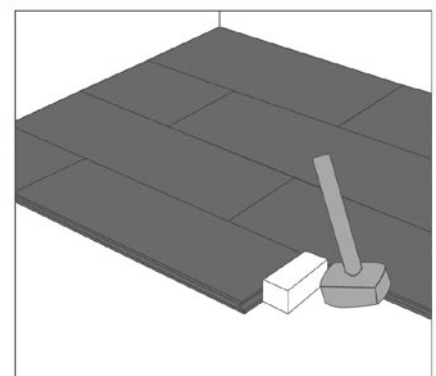
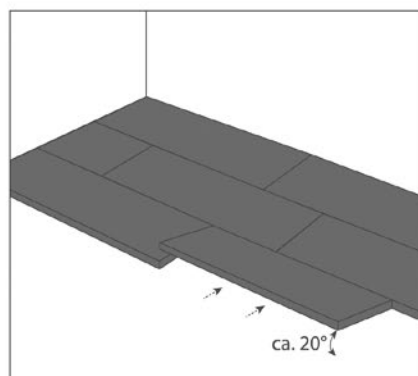
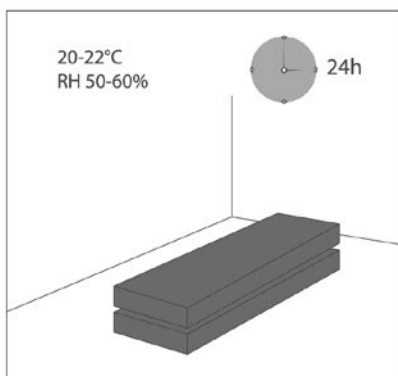
Note: When you use a tapping block (min. 20cm long) to click or put together the short side flat, not put the tapping block against the tongue. Put the tapping block against the groove or the over lip from the tongue side, otherwise you can damage the tongue.

It is also possible gluing Floover Mineral directly to the floor using water free glue as Kleiberit 583.6 or similar.

CLEANING AND CARE

The floor can be dampened but also wet cleaned, also the use of brush wet cleaning machines is possible. After the first cleaning of the freshly laid flooring, it is recommended to mop the surface.

Differences in colour and structure can occur due to the properties of the material and underline the authenticity of this natural product.



CERAMIC ANTISKID

INSTALLATION AND MAINTENANCE

BEFORE INSTALLATION

The installation area must be climate controlled for at least one week before installation, during installation, and continuously after installation. Proper conditions are between 18-29°C. This product is not suitable for installation in non-climate controlled areas such as covered decks, porches or outdoors.

Acclimate the product to the climate-controlled location's temperature for a minimum of 48 hours before starting installation. It is important that the flooring be the same temperature as the area it is installed in.

Pull planks from different cartons when installing to ensure a pleasant blending of colours. Slight colour variations are normal and expected between pieces on this kind of material.

This loose lay product is for installing in the interior of any building without adhesives, as long as the subfloor has been prepared to the standard as stated in Subfloor Conditions.

Tools Needed: Professional saw, measuring tape, pencil and suckers. If you want to have a separation between tiles you will also need cross and T spacers, spatula, epoxy grout as Mapei Kerapoxy Design or similar, pan and a sponge (Floover also supply all the essential installation tools and accessories). If using adhesive, follow adhesive supplier's instructions.

SUBFLOOR CONDITIONS

Subfloor preparation is very important for a successful installation. Roughness or unevenness of the subfloor may affect the new floor. All subfloors should be smooth and flat with a tolerance of 3 mm over 1,8 m or less. All subfloor and underlayment patching must be done with a non-shrinking, water-resistant Portland cement type patching compound.

Product can be installed over most existing hard-surface floor coverings provided the existing floor surface is smooth or can be made smooth. Existing floors must be solid. Fix any loose areas. Deeply embossed existing resilient floors require the use of an embossing leveller. Hea-vily cushioned vinyl flooring or vinyl flooring consisting of multiple layers are not suitable subfloors for installation.

Concrete subfloors must be dry, smooth and free from dust, solvent, paint, wax, grease, oil, asphalt sealing compounds and other extraneous materials. The surface must be hard, dense, and free from powder or flaking. The floor should have a moisture reading of less than 75% RH. New concrete slabs must be thoroughly dry, at least six weeks old and completely cured. The final responsibility for determining if the concrete is dry enough for installation of the flooring lies with the floor covering installer.

Holes, grooves, expansion joints and other depressions must be filled with a Portland cement based underlayment and troweled smooth and feathered even with the surrounding surface. Existing ceramic tile must be made smooth by applying a cementitious overlay such as patching or levelling compound. All wood and wood composite panels, including plywood, OSB, flake board and particle board are acceptable subfloors as long as they are dry, smooth, flat, structurally sound and free of deflection. Joints should be sanded if they exhibit peaking.

In metal and Painted Floors remove any loose paint or ether finishes. Existing adhesive residue must be removed or encapsulated. Never scrape adhesive residue that may contain asbestos.

INSTALLATION

Before installation, make sure the subfloor is dry and dust free. It's recommended to draw a draft of the design on the support to define the place where the tiles have to be laid.

Flooring should be laid directly against walls, fixed with a bead of silicone or grout after installation completed. Open transition areas with no wall to lay against should be fixed with 10 cm wide adhesive.

Once you lay down all the uncut tiles, measure the distance from the last piece and the wall. Mark a line with a pencil on the tile that has to be cut and cut it with a professional saw.



CERAMIC ANTISKID INSTALLATION AND MAINTENANCE

INSTALLATION WITHOUT JOINTS

Make sure each plank is fit tightly to the next piece. Very light tapping to get a tight fit is fine, but take care not to compress the plank you are tapping into and prevent the edges from colliding. Use a sucker to easily move and situate the tiles on the desired place. It's also possible to replace a single tile using two suckers.



INSTALLATION WITH JOINTS

Use the cross and the T spacers to maintain always the same separation between tiles and the squareness of the laying. Use a sucker to easily move and situate the tiles on the desired place.

Once you place all the tiles, remove the spacers and use Mapei Kerapoxy Design or similar to fill the gaps with the help of a spatula making sure that the joints are filled right down to the bottom. Remove excess material by passing the edge of the same trowel diagonally over the tile joints. The tiles must be cleaned after grouting while the product is still "fresh". Wet the grouted surface and emulsify with an abrasive pad for cleaning joints. After the finishing operation, it is very important that no traces of grout remain on the surface of the tiles.



ROUTINE MAINTENANCE

Anti-slip surfaces and areas demanding high hygiene standards (kitchens, food stores, etc.) need to be cleaned more frequently, even on a daily basis. To clean Ceramic Antiskid only use warm water and mild alkaline detergents available from most retailers (products containing hydrofluoric acid and its derivatives should not be used).

We do not recommend using detergents containing wax, to avoid creating an oily coating on the surface of the slab. With particularly difficult stains, we recommend you clean the area by following the instructions in the Type of detergent according to the Type of dirt table:

Type of dirt	Type of detergent
Grease and oil, Ice Cream	Alkaline detergent
Ink, Bear, wine, coffee	Sodium hypochlorite solution (bleach) or acid detergent
Rust, limescale and cement build-up	Acid detergent
Tyre marks	Organic solvent (trichloroethylene, thinner)
Resin	Organic solvent (white spirit, thinner)
Fruit juice	Diluted sodium hypochlorite solution (bleach)
Pen marks (permanent marker)	Organic solvent (acetone, thinner)
Aluminium scratch marks	Acid detergent or abrasive detergent (cream/powder)
Other stains	Abrasive cream detergent

INDOOR WARRANTY

WARRANTY CONDITIONS AND COMPLAINS FOR LVT AND WOVEN SOLUTIONS

This warranty conditions are for LVT and Woven indoor solutions, except Loose Lay Antiskid.

Floover Flooring warranty applies for a period of 15 years for residential use and 10 years for commercial use, starting from the purchase date, whilst adhering to the following conditions:

Floover guarantees the following:

- Any Floover flooring will retain its dimensional stability, as it is defined on our technical data sheet.
- All flooring layers will remain glued together (with temperature under 70°C).
- For products with click, joints between clicked pieces will remain closed.
- Normal sunshine will not alter surface colours. Extreme sunlight or extremely aggressive chemicals may affect colours. Defects resulting from such factors are excluded from this warranty.
- Friction will not generate any static electricity.
- In case of Floover products to be glued, connection to the subfloor is excluded from this warranty, since it depends on glue performance and subfloor conditions.
- Differences in the colour of materials from different batches are possible and no cause of complaint.
- Warranty does not apply to defects due to inappropriate use or temperature or humidity conditions over the standard.

This warranty is valid only if:

- The product has been installed under all indications of Floover laying instructions.
- There is an adequate use recommended by Floover according to the category selected and appropriate dimensions and conditions of the room (subfloor conditions, ambient humidity, etc...).
- The product maintenance is performed periodically, according to the instructions recommended by Floover and always using appropriate cleaning products. This warranty is not valid for defects resulting from an incorrect or insufficiently frequent maintenance, from wrong methods, inappropriate cleaning products, or for cuts or marks caused by sharp tools.

Under the following installation conditions:

Always install on subfloor materials recommended by Floover as indicated in the installation instructions text for each product. Generally:

- Base floor must be resistant, in good conditions, clean and dry.
- Moisture content of the base has to be less than 2.5% CM (cement subsoil) or less than 1.5% (anhydrite subsoil). For a subfloor heating system it has to be respectively less than 1.5% and 0.3%.
- Base floor must be levelled with a maximum difference of ± 2 mm per meter for all Floover products. Roughness or unevenness of the subfloor may appear on glued flooring.
- Click flooring shall be installed floating (without glue or anchorages); the short joints of the boards between two different lines must be offset of at least 300 mm; click flooring requires 10 mm of empty space for dilatation all over the perimeter, including structural elements and heavy furniture.
- The maximum area to install click flooring without joints depends on the chosen support and must be respected.
- In the case of underfloor water heating system, adhere to the protocol of start-up.
- In areas near to large windows or glass fronts, it is necessary to use curtains to minimize the overheating of the flooring caused by the impact of sunlight.

Complaints:

Once a complaint is submitted according to Floover's instructions, and in case the complaint is accepted, the customer will receive a replacement of the material (or similar or superior quality in case of impossibility), delivered at the same original destination.

Any installation costs, de-installing flooring, etc... are not included in the fabrication warranty.

If the complaint is addressed after 1 year of the installation of the material, an annual accumulative reduction is applied from the purchase value of -4% per year.

ANTISKID WARRANTY

WARRANTY CONDITIONS AND COMPLAINS FOR LOOSE LAY ANTISKID

Floover Loose Lay Antiskid warranty is maintained for a period of 10 years (from purchase date) adhering to the following conditions:

This warranty is valid if:

- The product has been installed under all indications of Floover laying instructions attached inside packaging.
- The product must be maintained periodically, according to the instructions recommended by Floover. This warranty is not valid if the effects are produced by the incorrect maintenance and insufficient frequency, for methods or materials not adequate, cuts or marks caused by sharp objects.
- The warranty is subject to appropriate use or per adequate conditions of temperature or humidity, indicated in the laying Instructions text.
- Defect for over abrasion is defined if it affects an area over 10% of the total area installed.

Warranty applies for the following aspects:

- Floover Loose Lay Antiskid will retain its dimensional stability, as indicated on technical data sheet.
- Different components will remain glued, (with conditions not over 70°C) as indicated.
- The colour will be not modified by sunshine, with proper use. Obviously, extreme exposure to sun or extremely aggressive chemical products can affect the design, and will be excluded from this warranty.
- Static electricity will be not produced by slipping.

Under the following installation conditions:

- The product should be acclimated to the climate-controlled location's temperature for a minimum of 48 hours.
- Surface must be clean and dry. (no screws or glues) and free of objects.
- Base Floor levelled with a difference of 3 mm over 1,8 m as maximum.
- Sub floor material must be concrete or any other compact and resistant floor and in good conditions.
- Distance between short edges not less than 300 mm between pieces is recommended.

- Flooring should be laid directly against walls, fixed with a bead of silicone after installation completed.
- Open transition areas with no wall to lay against should be fixed with 10 cm wide adhesive.
- Each plank should fit tightly to the next piece.

Under the following conditions of use:

- Adequate use recommended by Floover according to the category selected.
- Dimensions and conditions of the room must be appropriate (sub floor conditions, ambience humidity, etc...) and in the case of under floor water heating system, adhere to the protocol of start-up.
- The maintenance must be as according to the Floover laying Instructions. For daily cleaning, a neutral cleaner should be used. Floover recommends Floover Cleaner.
- Proper conditions are between 18-27° C. This product is not suitable for installation in non-climate controlled areas such as covered decks, porches or outdoors.
- The flooring must not receive a prolonged effect of direct sunlight.

Once a complaint is submitted according to Floover instructions, and in case that the complaint is accepted, the customer will receive a replacement of the material (or similar or superior quality in case of impossibility), delivered in the same original destination.

Any installation costs, de-installing flooring, etc... are not included in the fabrication warranty.

If the Complaint is produced after 1 year of the installation of the material, an annual accumulative reduction is applied from the purchase value of -4% per year.

OUTDOOR WARRANTY

WARRANTY CONDITIONS AND COMPLAINS

Floover Flooring warranty is maintained for a period of indicated years (from purchase date) adhering to the following conditions:

This warranty is valid if:

- The product has been installed under all indications of Floover laying instructions which appear on the back of the packaging.
- The product must be maintained periodically, according to the instructions recommended by Floover.
- This warranty is not valid if the effects are produced by the incorrect maintenance and insufficient frequency, for methods or materials not adequate, cuts or marks caused by sharp objects.
- The warranty is subject to appropriate use or per adequate conditions of temperature or humidity, indicated in the laying Instructions text.
- Defect for over abrasion is defined if it affects an area over 10% of the total area installed.

Warranty applies for the following aspects:

- UV Resistance: According to European norm ISO 105 Floover Woven Surface establish a warranty of 6 years with a very little decolouration of the original colours of the product, only visible in comparison with a new product not exposed to UV.
- Woven Wrapping: According to European Norm EN 431 (according EN649) Floover Woven establish a warranty of 10 years for the wrapping of woven and Wood base, with normal transit of persons and in normal exterior conditions (workable range from -25° to +135°).
- Stability of Thermotreated pine is fully warranty for 10 years under normal outdoor conditions under European Norm EN 310.
- Origin of Wood is PEFC certified which warranty the sustainability of the Wood origin.

Under the following installation conditions:

TILES

- Place the first tile in a corner of the area to be covered.
- Click the male joints of the next tile into the female joints.
- There are two possible installation systems: linear and checkerboard.

DECKING

- Beams must be applied adequately distance 400 mm from centers for normal use, and 250 mm for heavy use.
- Beams must be properly firmed on the base, by screws, glues or any other fixing system.
- Material must be conditioned before the installation.
- Subfloor material must be concrete or any other compact and resistant floor.
- The support must have a slope of between 2% and 5% in order to evacuate water to the drainage points.
- Distance between joints not less than 300 mm between pieces is recommended.
- Joints must be fixed over the beams and fixed with the clip in both sides.
- 3 mm of space for dilatations between pieces are needed.

Under the following conditions of use:

- Adequate general use recommended by Floover.
- Use of adequate cleaners. For regular cleaning, Floover recommends Floover Cleaner.
- For an intensive cleaning Floover recommends Syntilor Cleaner special for Composite Decks.

Once a complaint is submitted according to Floover instructions, and in case that the Complaint is Accepted, the customer will receive a replacement of the material (or similar or superior quality in case of impossibility), delivered in the same original destination.

Any installation costs, de-installing flooring, etc... are not included in the manufacturer warranty.

If the Complaint is produced after 1 year of the installation of the material, an annual accumulative reduction is applied from the purchase value of -10% per year.

FAQ

FREQUENTLY ASKED QUESTIONS

WHICH ARE THE MAIN APPLICATIONS FOR FLOOVER?

Main applications are offices, hotel rooms and corridors, VIP rooms and common areas, gyms and bathrooms, retail stores and exhibition points. It is also commonly applied in walls and furniture covers. Always used in indoor applications. For outdoor applications, please see Woven Decking and Tiles.

IS FLOOVER A RESIDENTIAL OR COMMERCIAL PRODUCT?

Floover is a professional floorcovering for commercial areas where all technical properties of the material correspond to this use. Of course this is also appropriate for residential use.

IS IT SUITABLE FOR SUBFLOOR HEATING SYSTEM?

Yes, it is. Just need to follow the procedures on the installations instruction. Also good heat transmission ratio for environmental and efficiency aspect has been proved according to CE standards.

IS FLOOVER SUITABLE FOR CHILDREN AREAS?

Yes, it is. Floover is also used in kindergartens, playgrounds and game rooms. Its core structure is soft and smooth.

IS IT SUITABLE FOR HOSPITALS?

Yes it is. It is used in treatment rooms, corridors, guest rooms, cafeterias and other public areas. Note: Floover Woven range is not recommended in surgery rooms

IS IT SUITABLE FOR HIGH TRAFFIC-AREAS?

Yes, it is. Floover products are mainly classified Class 33, suitable for heavy traffic due to the special yarn construction. Floover Original collection is classified as Class 32, which is recommended for housing, but the rest of the products are Class 33 specially recommended for high traffic areas, such as shops, open-plan offices and public halls.

DOES IT SOUND WHEN WALKING ON THEM?

Impact sound insulation varies for different products from 12dB to 22 dB, depending on the product construction and sub-floor installation.

IS IT SUITABLE FOR CHAIR CASTORS?

Yes, use chairs with hard castors whenever possible (polyamide).

IS FLOOVER FLOORING ANTI-STATIC?

Floover flooring does not generate a static charge because of the construction of the multi-layer. Floover flooring products have been tested and fulfil the requirements of the European Directive ISO1815.

WHAT ARE THE DIFFERENT INSTALLATIONS SYSTEMS FOR?

Floover products on click system are suitable for medium and small areas, where the floor is not perfectly flat and floating system is accepted. They can be produced on HDF boards to be used when there is no humidity risk, or in waterproof boards (Splash) and these are used in bigger areas (>200m² up to 400m²) where joints are not required.

Floover rolls are the perfect application for professionals when required for bigger areas – glue down system and welding joints are needed.

Floover tiles is the easiest solution when it comes to glue-down system.

Woven Tiles and Decking are specially designed for outdoor spaces.

DOES FLOOVER FLOORING NEED ANY PARTICULAR MAINTENANCE?

Floover flooring systems can be easily cleaned with water and soap. We strongly recommend using Floover Cleaner, or in any case a specific vinyl cleaner.

Floover floors can be restored periodically with an intensive or heavy cleaner product and would look as good as new. See our maintenance guide" for more details. You can also watch our tutorials on Floover Flooring Channel in Youtube (www.youtube.com/flooverflooring)

IS IT POSSIBLE TO CUSTOMIZE A FLOORING SOLUTION IN COLOUR OR DESIGN?

Yes, it is. Check specific requirements in quantities.

DOES FLOOVER PROVIDE A SKIRTING SYSTEM?

Yes, we do. Floover supplies traditional skirting but also waterproof skirting, stair nose, transition and dilatation joints for all the colours available in Floover range.

DOES FLOOVER HAVE GREEN CERTIFICATES?

All our products hold a high class rating certificate based on different criteria. The product holds CE for health and fire concerns, as well as ASTM tests. Floover presents all its vinyl collections with a technology evolution that allows us to improve the emissions performance by eliminating completely any phthalate emission from its products, making them the safest for your children.



HEADQUARTERS

C/ Selva, 4 2nd Floor
08820 El Prat de Llobregat · Barcelona (Spain)
T. +34 938 913 310
info@floover.com

FACTORY

Palü Daint
CH-7537 Müstair (Switzerland)
T. +41 818 503 944

